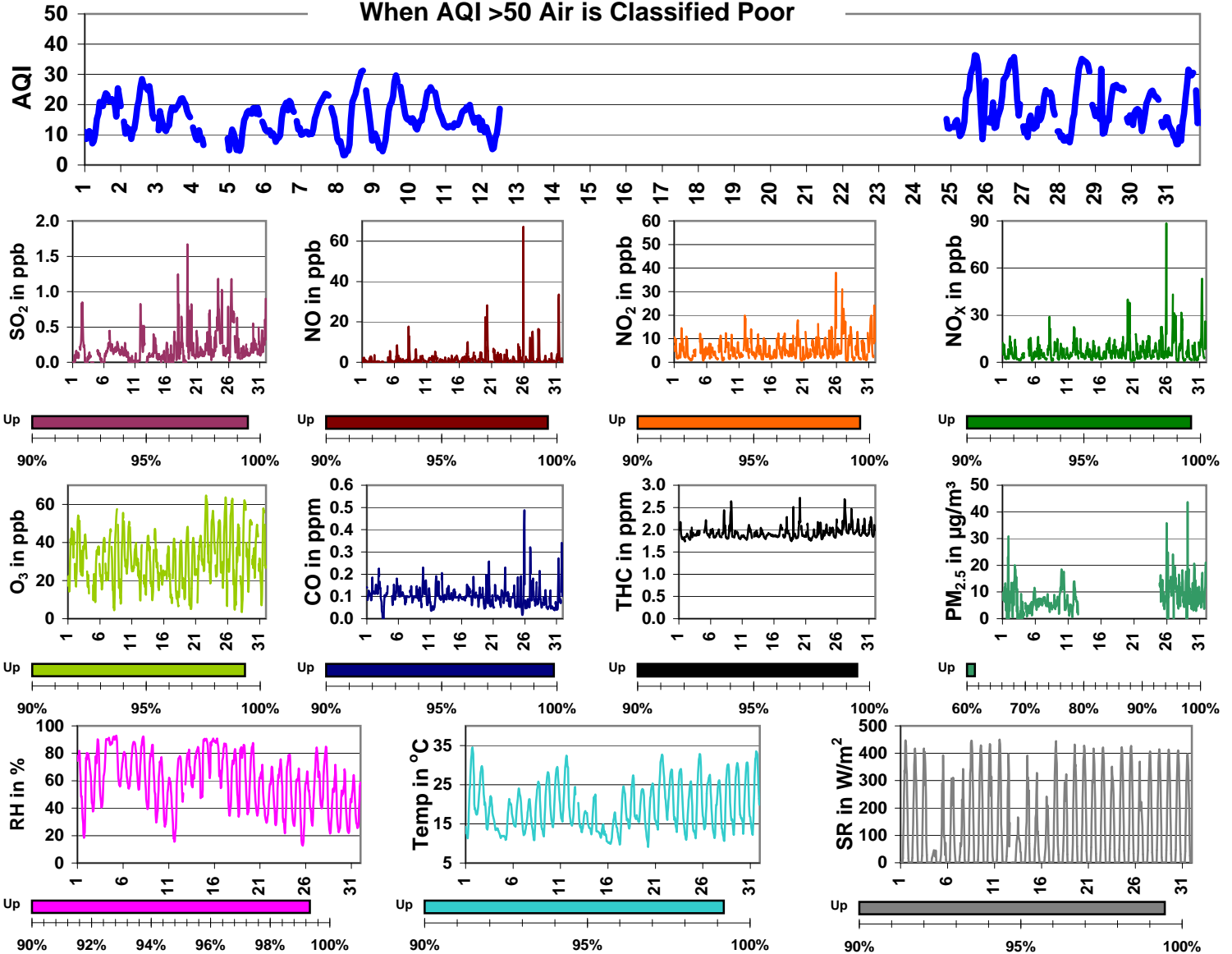


Palliser Airshed Society - August 2009 Summary Report

	Average	Uptime	1-hour			24-hour			Exceed	
			Max	Objective	Time	Max	Objective	Day	1hr	24hr
SO ₂ (ppb)	0.2	99.5%	1.7	172	Aug-19 10:00	0.6	57	Aug-24	0	0
NO (ppb)	1.6	99.6%	67.1	-	Aug-25 22:00	5.6	-	Aug-25	0	0
NO ₂ (ppb)	5.4	99.6%	38.1	212	Aug-25 22:00	10.7	106	Aug-31	0	0
NO _x (ppb)	7.0	99.6%	88.4	-	Aug-25 22:00	15.7	-	Aug-31	0	0
O ₃ (ppb)	31.3	99.3%	64.6	82	Aug-22 15:00	43.1	-	Aug-22	0	0
CO (ppm)	0.10	99.9%	0.49	13.0	Aug-25 22:00	0.14	-	Aug-02	0	0
THC (ppm)	1.93	99.5%	2.72	-	Aug-20 03:00	2.13	-	Aug-27	0	0
PM _{2.5} µg/m ³	8.1	61.3%	43.7	-	Aug-29 04:00	11.3	30	Aug-26	0	0

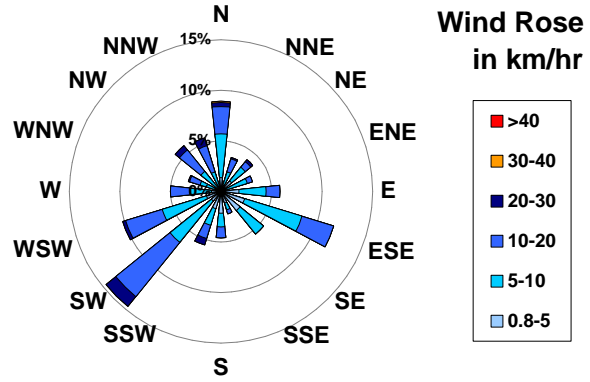
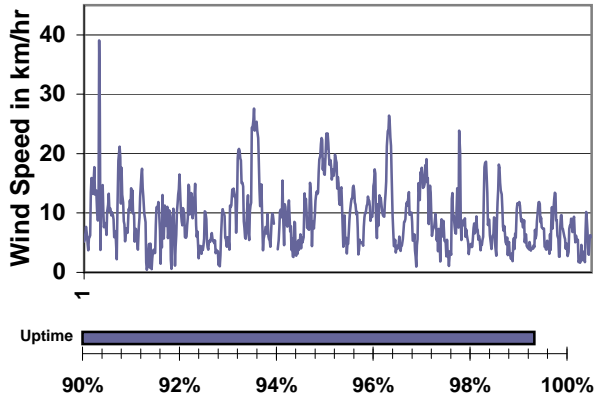
When AQI >50 Air is Classified Poor



Update Summary

- The PM_{2.5} analyzer was down from August 12-24. This down time has been captured in the AQI and the PM_{2.5} graphs.
- The Rover Station will be up and running in October 2009
- PAS website changed to www.palliserairshed.com

Palliser Airshed Society - August 2009 Summary Report

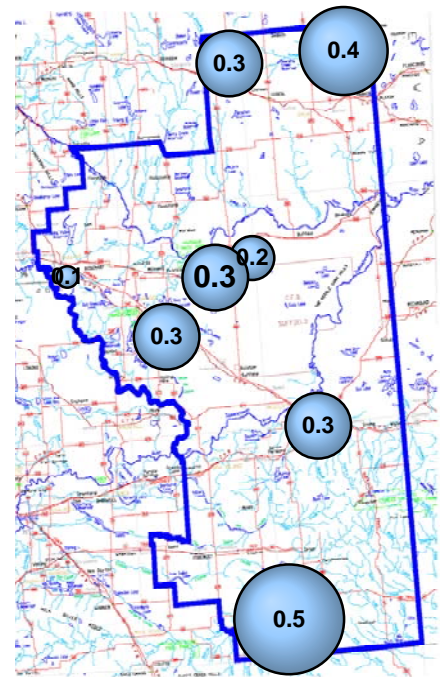
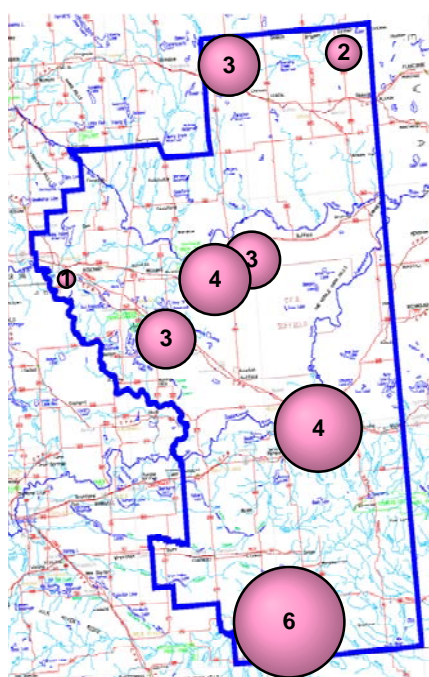
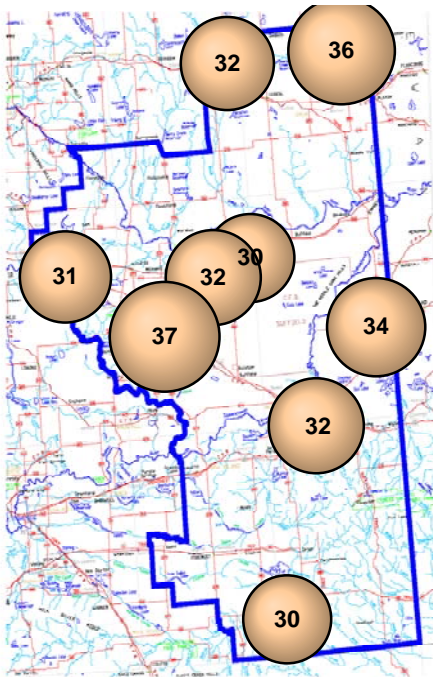


July 2009 - Passive Sampling Results throughout the PAS Zone

O3 Passives (in ppb)

NO2 Passives (in ppb)

SO2 Passives (in ppb)



No rover data available this month.