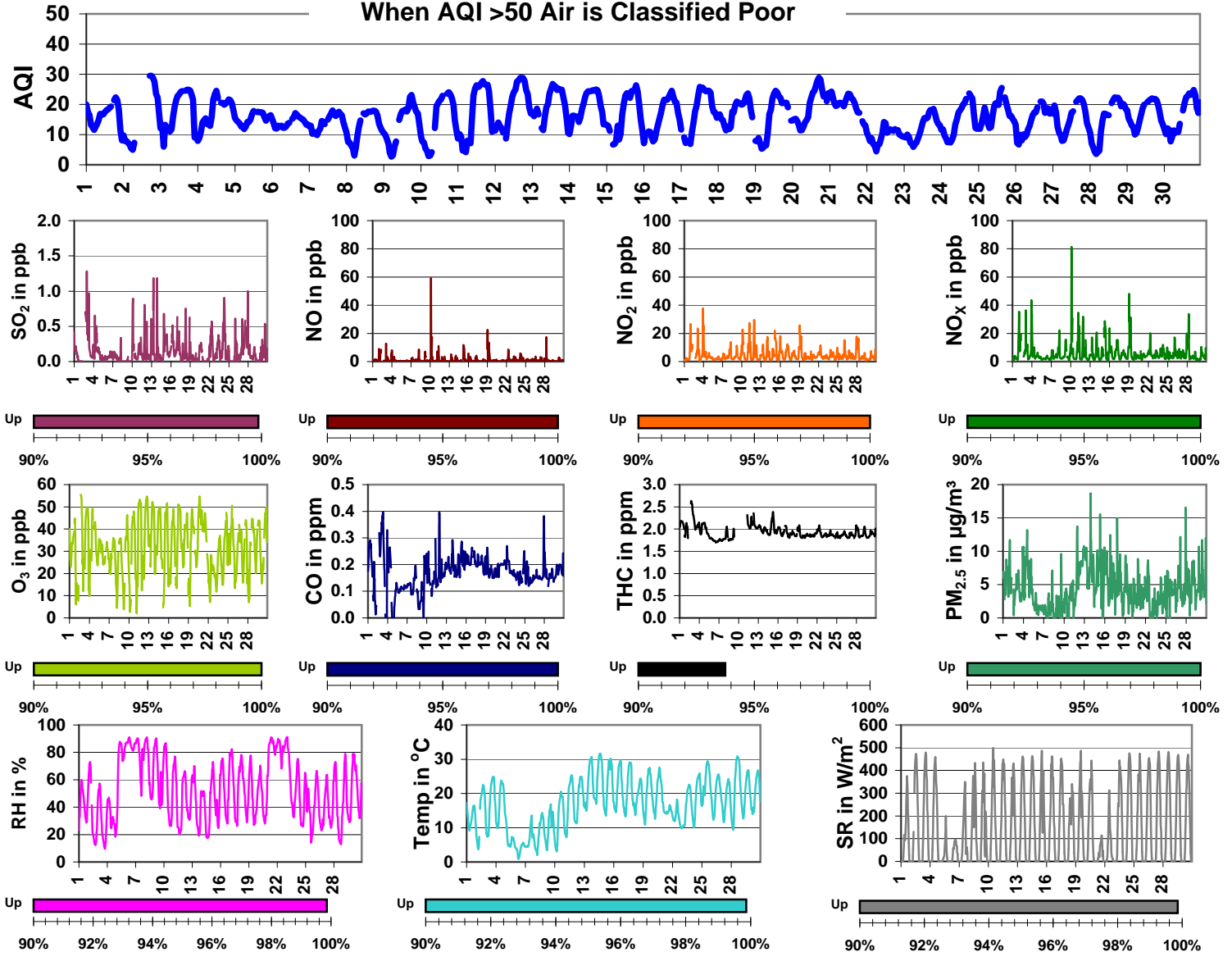


# Palliser Airshed Society - June 2009 Summary Report

	Average	Uptime	1-hour			24-hour			Exceed	
			Max	Objective	Time	Max	Objective	Day	1hr	24hr
SO <sub>2</sub> (ppb)	0.1	99.9%	1.3	172	Jun-02 23:00	0.3	57	Jun-27	0	0
NO (ppb)	1.2	100.0%	59.0	-	Jun-10 03:00	2.7	-	Jun-19	0	0
NO <sub>2</sub> (ppb)	4.7	100.0%	37.9	212	Jun-03 22:00	9.6	106	Jun-11	0	0
NO <sub>x</sub> (ppb)	5.9	100.0%	81.3	-	Jun-10 03:00	11.3	-	Jun-11	0	0
O <sub>3</sub> (ppb)	31.9	100.0%	55.4	82	Jun-02 17:00	39.6	-	Jun-12	0	0
CO (ppm)	0.17	100.0%	0.40	13.0	Jun-03 07:00	0.22	-	Jun-16	0	0
THC (ppm)	1.93	93.8%	2.64	-	Jun-02 18:00	2.12	-	Jun-03	0	0
PM <sub>2.5</sub> µg/m <sup>3</sup>	4.4	100.0%	18.7	-	Jun-13 22:00	8.7	30	Jun-13	0	0

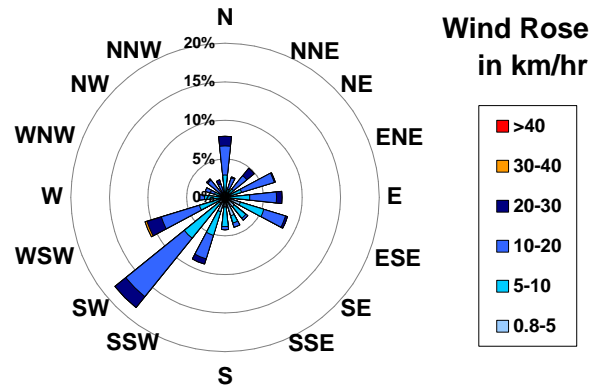
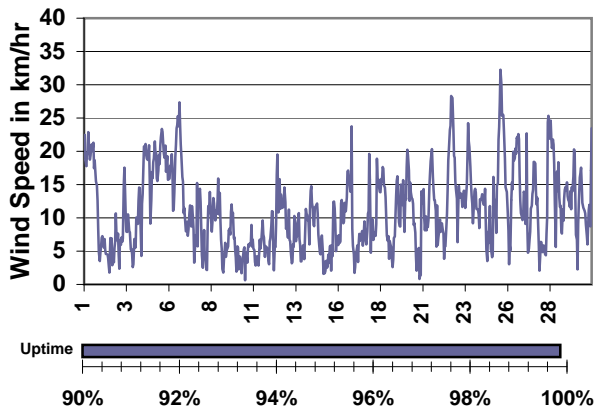
**When AQI >50 Air is Classified Poor**



## Update Summary

- June 9, 2009 the AC was repaired at the Crescent Heights Station
- Work on the Rover was started to prepare for its deployment in September

# Palliser Airshed Society - June 2009 Summary Report

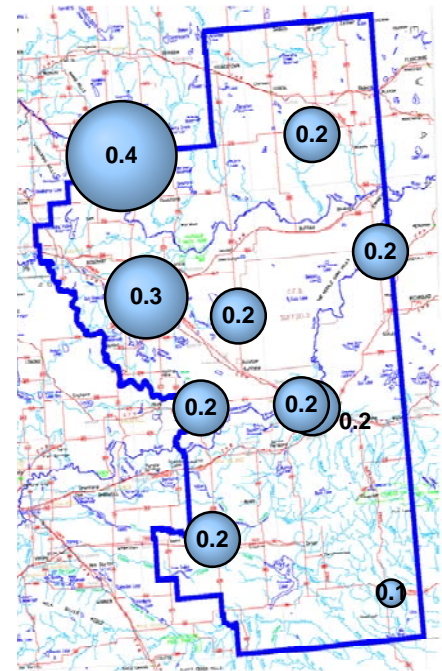
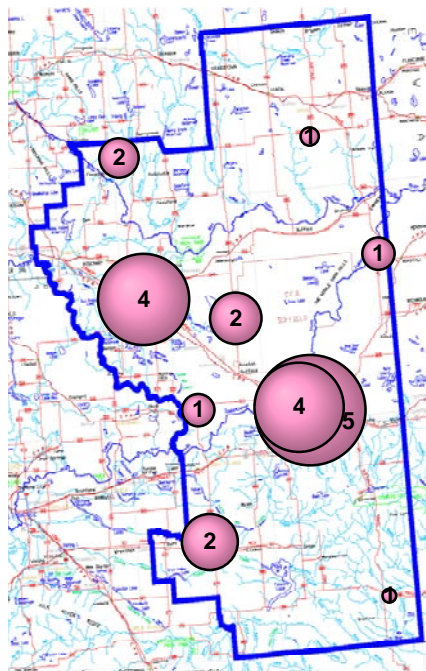
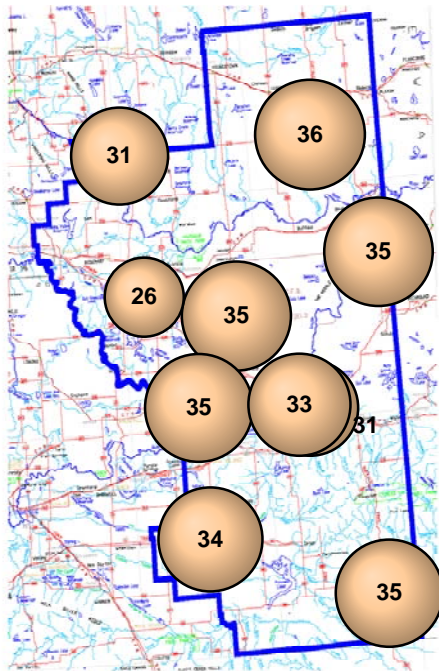


## June 2009 - Passive Sampling Results throughout the PAS Zone

O3 Passives (in ppb)

NO2 Passives (in ppb)

SO2 Passives (in ppb)



No rover data available this month.