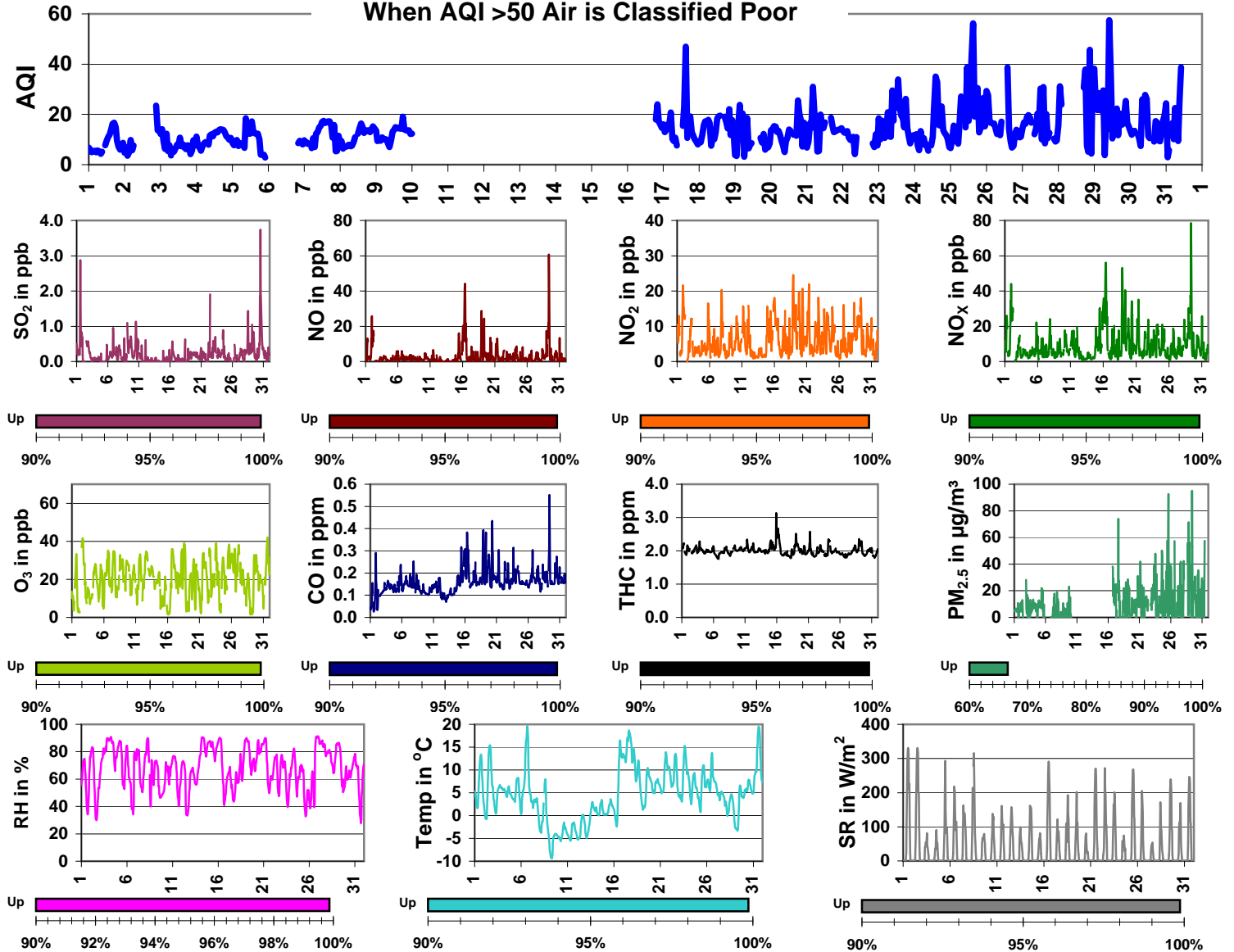


Palliser Airshed Society - October 2009 Summary Report

| | Average | Uptime | 1-hour | | | 24-hour | | | Exceed | |
|-------------------------------------|---------|--------|--------|-----------|--------------|---------|-----------|--------|--------|------|
| | | | Max | Objective | Time | Max | Objective | Day | 1hr | 24hr |
| SO ₂ (ppb) | 0.2 | 99.9% | 3.7 | 172 | Oct-30 13:00 | 0.8 | 57 | Oct-30 | 0 | 0 |
| NO (ppb) | 2.9 | 99.9% | 60.7 | - | Oct-29 09:00 | 14.4 | - | Oct-16 | 0 | 0 |
| NO ₂ (ppb) | 6.0 | 99.9% | 24.6 | 212 | Oct-18 22:00 | 10.8 | 106 | Oct-19 | 0 | 0 |
| NO _x (ppb) | 9.0 | 99.9% | 78.5 | - | Oct-29 09:00 | 23.2 | - | Oct-16 | 0 | 0 |
| O ₃ (ppb) | 20.3 | 99.9% | 42.0 | 82 | Oct-31 16:00 | 27.3 | - | Oct-26 | 0 | 0 |
| CO (ppm) | 0.16 | 99.9% | 0.55 | 13.0 | Oct-29 09:00 | 0.22 | - | Oct-16 | 0 | 0 |
| THC (ppm) | 2.00 | 99.9% | 3.14 | - | Oct-15 22:00 | 2.20 | - | Oct-15 | 0 | 0 |
| PM _{2.5} µg/m ³ | 11.7 | 66.6% | 95.0 | - | Oct-29 10:00 | 26.1 | 30 | Oct-25 | 0 | 0 |

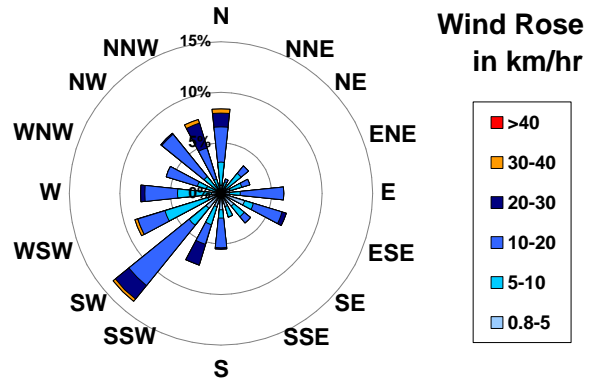
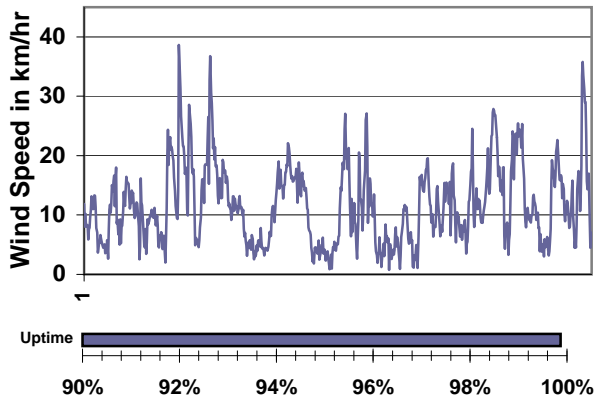
When AQI >50 Air is Classified Poor



Update Summary

- The Rover Station was up and running in October 2009
- The PM_{2.5} uptime was exceptionally low at 66.6%. This was due to miscommunication with AENV.
- PAS website changed to www.palliserairshed.com

Palliser Airshed Society - October 2009 Summary Report

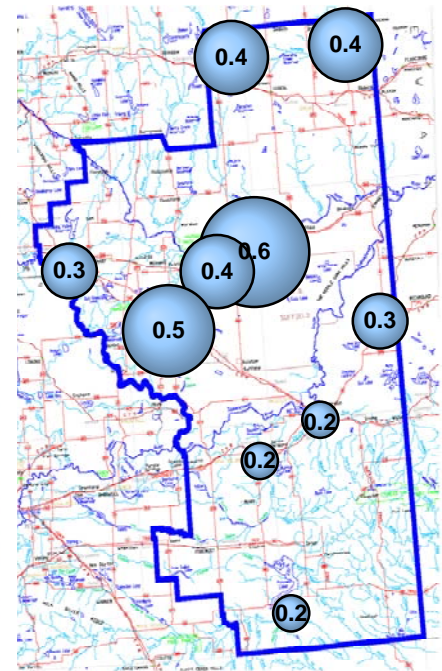
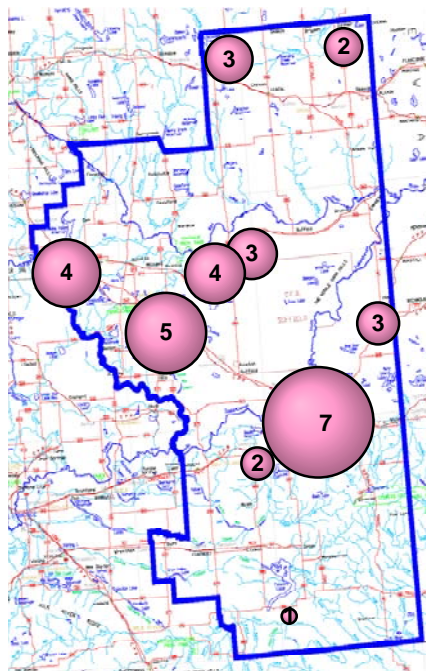
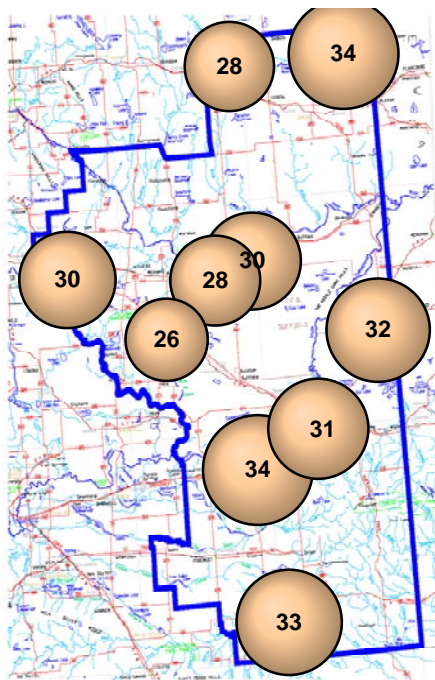


September 2009 - Passive Sampling Results throughout the PAS Zone

O₃ Passives (in ppb)

NO₂ Passives (in ppb)

SO₂ Passives (in ppb)



Portable Sampling Results throughout the PAS Zone

| | Average | Uptime | 1-hour | | | 24-hour | | | Exceed | |
|------------------------|---------|--------|--------|-----------|--------------|---------|-----------|--------|--------|------|
| | | | Max | Objective | Time | Max | Objective | Day | 1hr | 24hr |
| SO ₂ (ppb) | 0.4 | 99.7% | 4 | 172 | Oct-30 13:00 | 1 | 57 | Oct-10 | 0 | 0 |
| NO ₂ (ppb) | 2.8 | 99.7% | 17 | 212 | Oct-24 01:00 | 6 | 106 | Oct-23 | 0 | 0 |
| O ₃ (ppb) | 20.1 | 100.0% | 39 | 82 | Oct-02 17:00 | 26 | - | Oct-26 | 0 | 0 |
| H ₂ S (ppb) | 0.2 | 99.7% | 5 | 10 | Oct-15 09:00 | 1 | 3 | Oct-23 | 0 | 0 |

