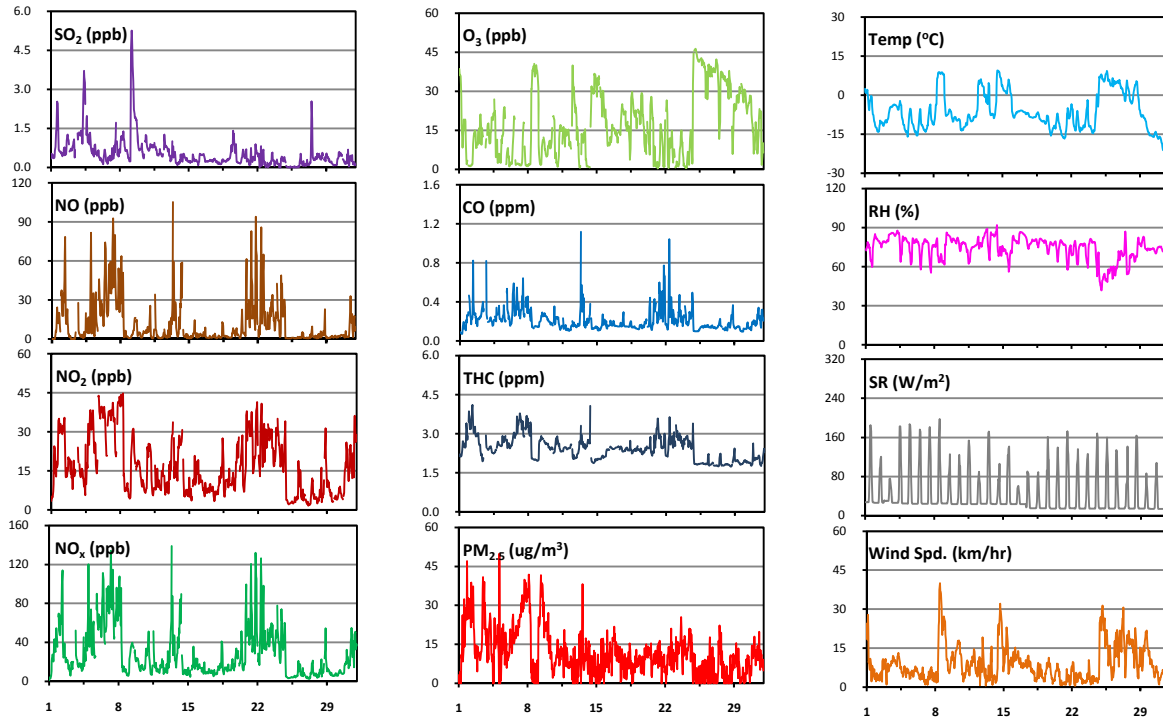
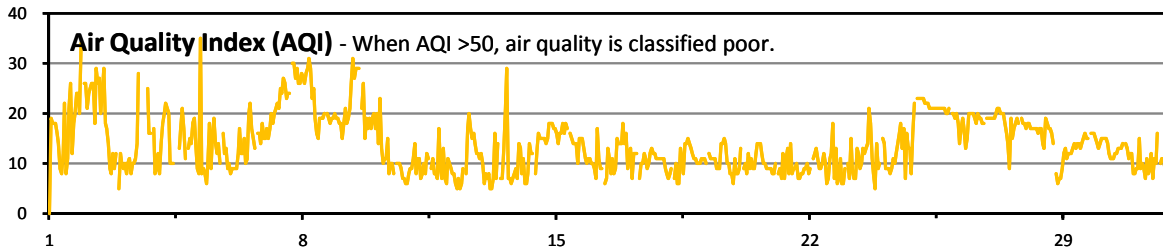


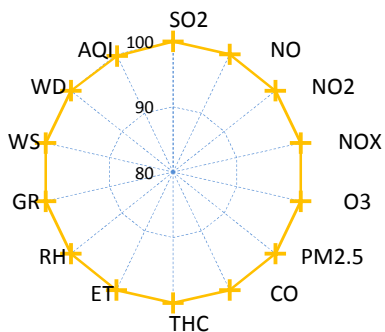
Palliser Airshed Society - December 2010 Summary Report

Continuous Sampling Results (Crescent Height Station)

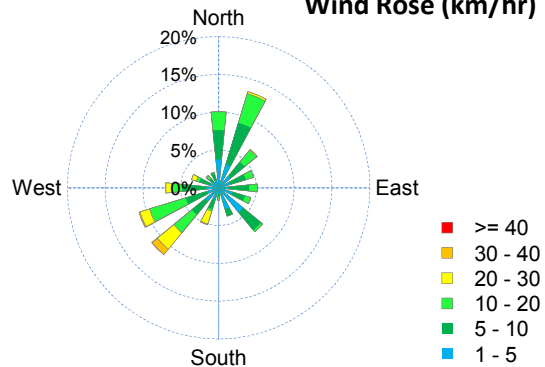
Pollutants		Month Records		24-hour Records				1-hour Records			
Name	Conc Unit	Avg. Conc	Uptime	Maximum		AAAQO Objective	Exceed Days	Maximum		AAAQO Objective	Exceed Hours
				Conc	Time			Conc	Time		
SO ₂	ppb	0.54	100.0%	2.25	Dec-09	57	0	5.26	Dec-09 4:00	172	0
NO	ppb	11.3	100.0%	44.4	Dec-07	-	-	105.3	Dec-13 8:00	-	-
NO ₂	ppb	16.8	100.0%	35.6	Dec-07	106	0	44.7	Dec-08 6:00	212	0
NO _x	ppb	28.4	100.0%	80.1	Dec-07	-	-	139.1	Dec-13 8:00	-	-
O ₃	ppb	17.0	100.0%	42.2	Dec-25	-	-	46.3	Dec-25 1:00	82	0
CO	ppm	0.21	100.0%	0.37	Dec-21	-	-	1.12	Dec-13 8:00	13	0
THC	ppm	2.4	100.0%	3.38	Dec-07	-	-	4.10	Dec-02 8:00	-	-
PM _{2.5}	µg/m ³	11.7	100.0%	30.5	Dec-07	30	0	49.9	Dec-05 3:00	-	-



Instrument Uptime (%)

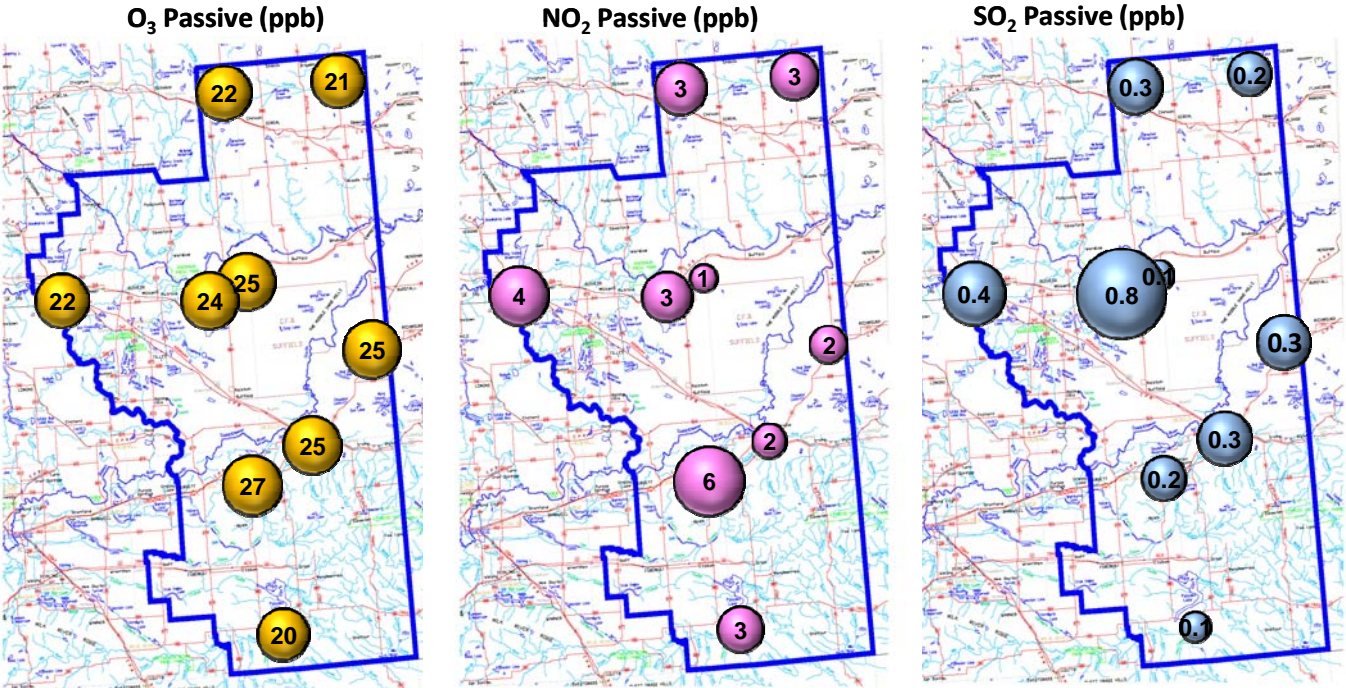


Wind Rose (km/hr)



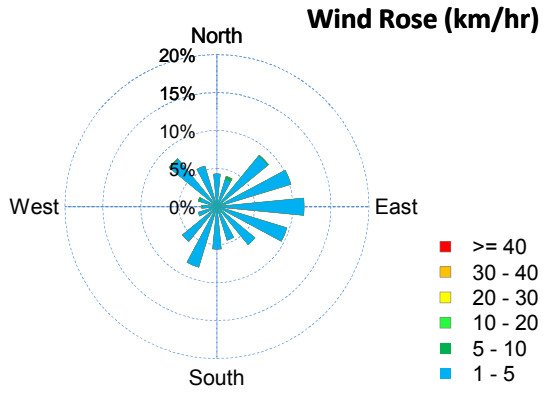
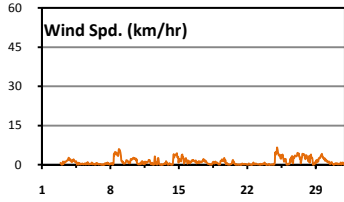
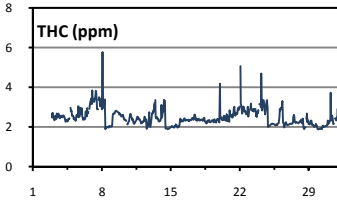
Palliser Airshed Society - December 2010 Summary Report

Passive Sampling Results



Rover Station Sampling Results - Firehall, Medicine Hat

Potable Station at Firehall	THC		Wind Speed	
	Conc. ppm	Maximum Date/Time	Speed km/hr	Maximum Date/Time
Monthly Average	2.5	-	1.2	-
24-hour Maximum	3.3	Dec-07	3.2	Dec-25
1-hour Maximum	5.8	Dec-08 01:00	6.7	Dec-25 01:00



Monthly Update

- Rover Station THC monitoring was started on December 2, 2010 at the Firehall Station, Medicine Hat.
- The PAS website, www.palliserairshed.com.