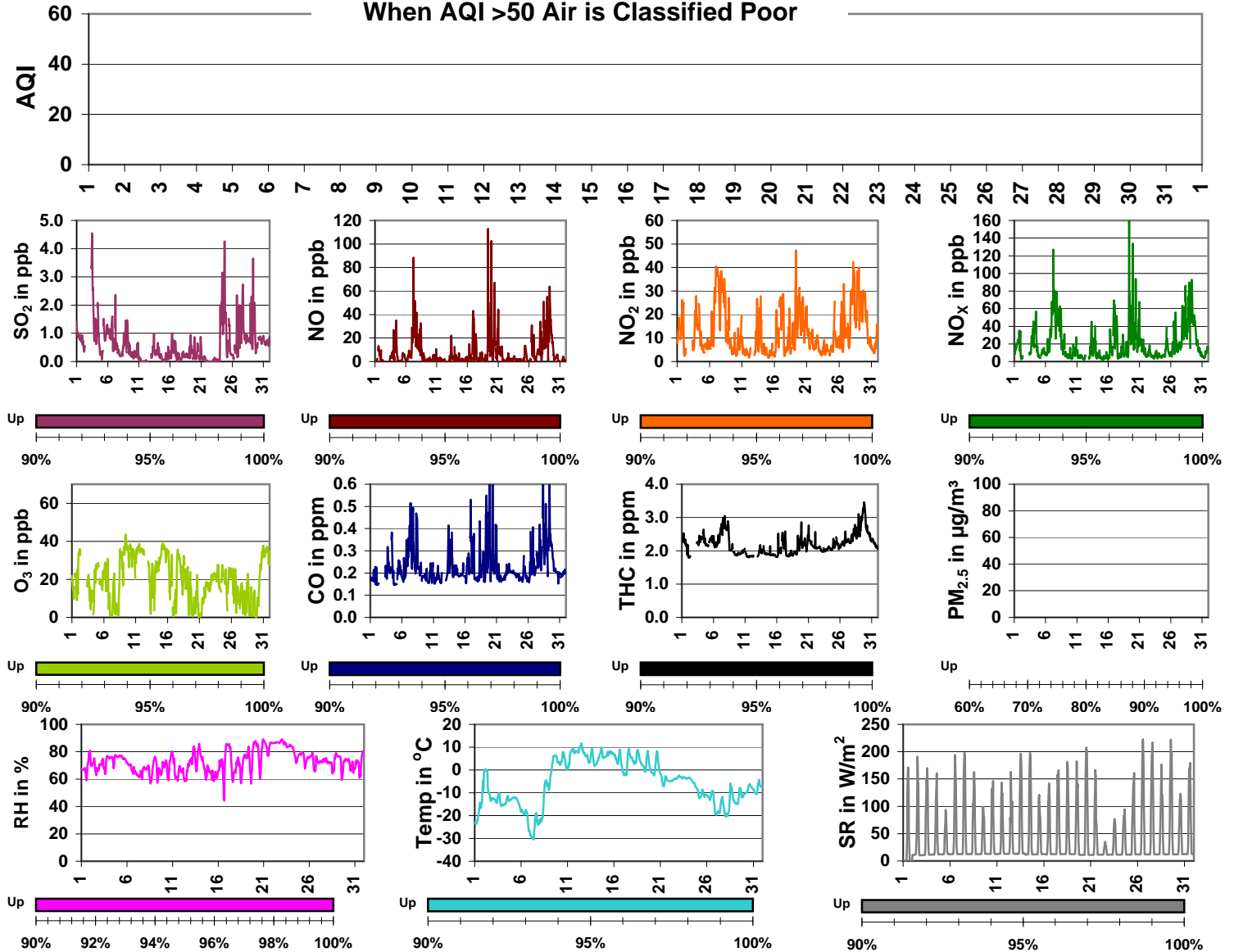


Palliser Airshed Society - January 2010 Summary Report

	Average	Uptime	1-hour			24-hour			Exceed	
			Max	Objective	Time	Max	Objective	Day	1hr	24hr
SO ₂ (ppb)	0.6	100.0%	4.5	172	Jan-03 12:00	2.0	57	Jan-24	0	0
NO (ppb)	7.4	100.0%	112.8	-	Jan-19 08:00	28.0	-	Jan-07	0	0
NO ₂ (ppb)	12.6	100.0%	47.3	212	Jan-19 08:00	31.7	106	Jan-07	0	0
NO _x (ppb)	19.9	100.0%	159.9	-	Jan-19 08:00	59.5	-	Jan-07	0	0
O ₃ (ppb)	19.9	100.0%	43.6	82	Jan-09 10:00	36.2	-	Jan-09	0	0
CO (ppm)	0.23	100.0%	0.90	13.0	Jan-19 22:00	0.35	-	Jan-07	0	0
THC (ppm)	2.20	100.0%	3.46	-	Jan-29 19:00	3.02	-	Jan-29	0	0
PM _{2.5} µg/m ³	0.0	0.1%	0.0	-	Jan-02 23:00	0.0	30	Dec-31	0	0

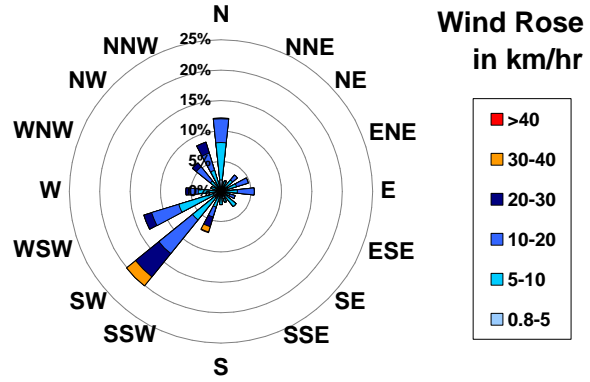
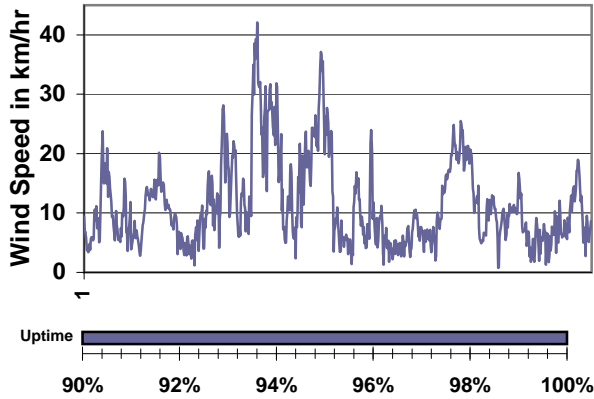
When AQI >50 Air is Classified Poor



Update Summary

- The PM_{2.5} did not record any information in the month of December due to a malfunction of the TEOM.
- PAS website changed to www.palliserairshed.com

Palliser Airshed Society - January 2010 Summary Report

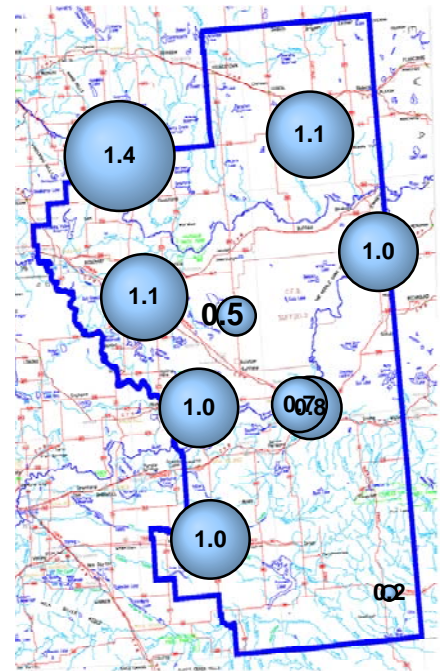
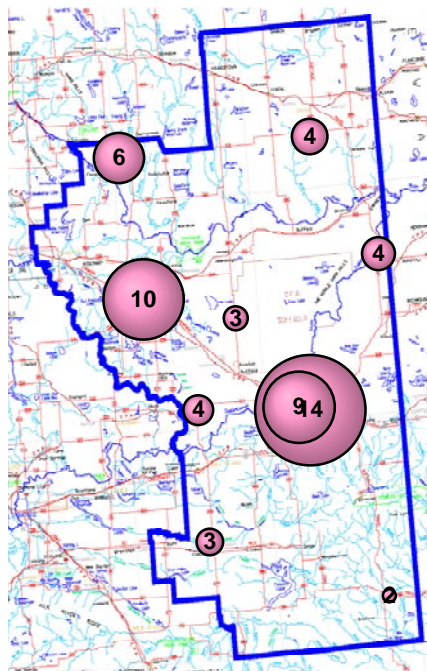
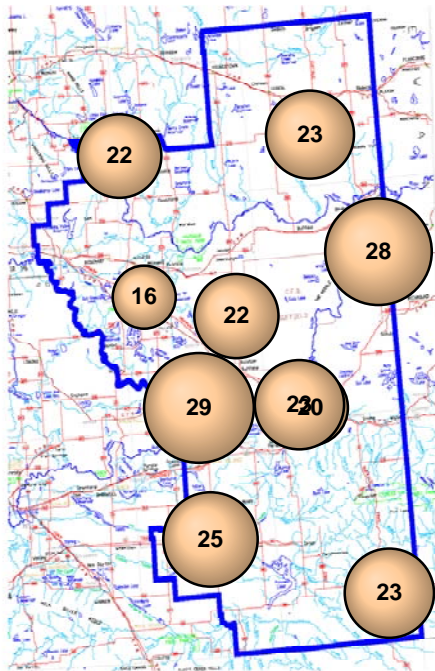


January 2010 - Passive Sampling Results throughout the PAS Zone

O₃ Passives (in ppb)

NO₂ Passives (in ppb)

SO₂ Passives (in ppb)



Portable Sampling Results throughout the PAS Zone

	Average	Uptime	1-hour			24-hour			Exceed	
			Max	Objective	Time	Max	Objective	Day	1hr	24hr
SO ₂ (ppb)	0.9	100.0%	9	172	Jan-02 16:00	4	57	Jan-02	0	0
NO ₂ (ppb)	5.7	100.0%	29	212	Jan-29 18:00	17	106	Jan-27	0	0
O ₃ (ppb)	25.5	100.0%	43	82	Jan-31 17:00	39	-	Jan-31	0	0
H ₂ S (ppb)	0.2	100.0%	3	10	Jan-24 03:00	1	3	Jan-27	0	0

