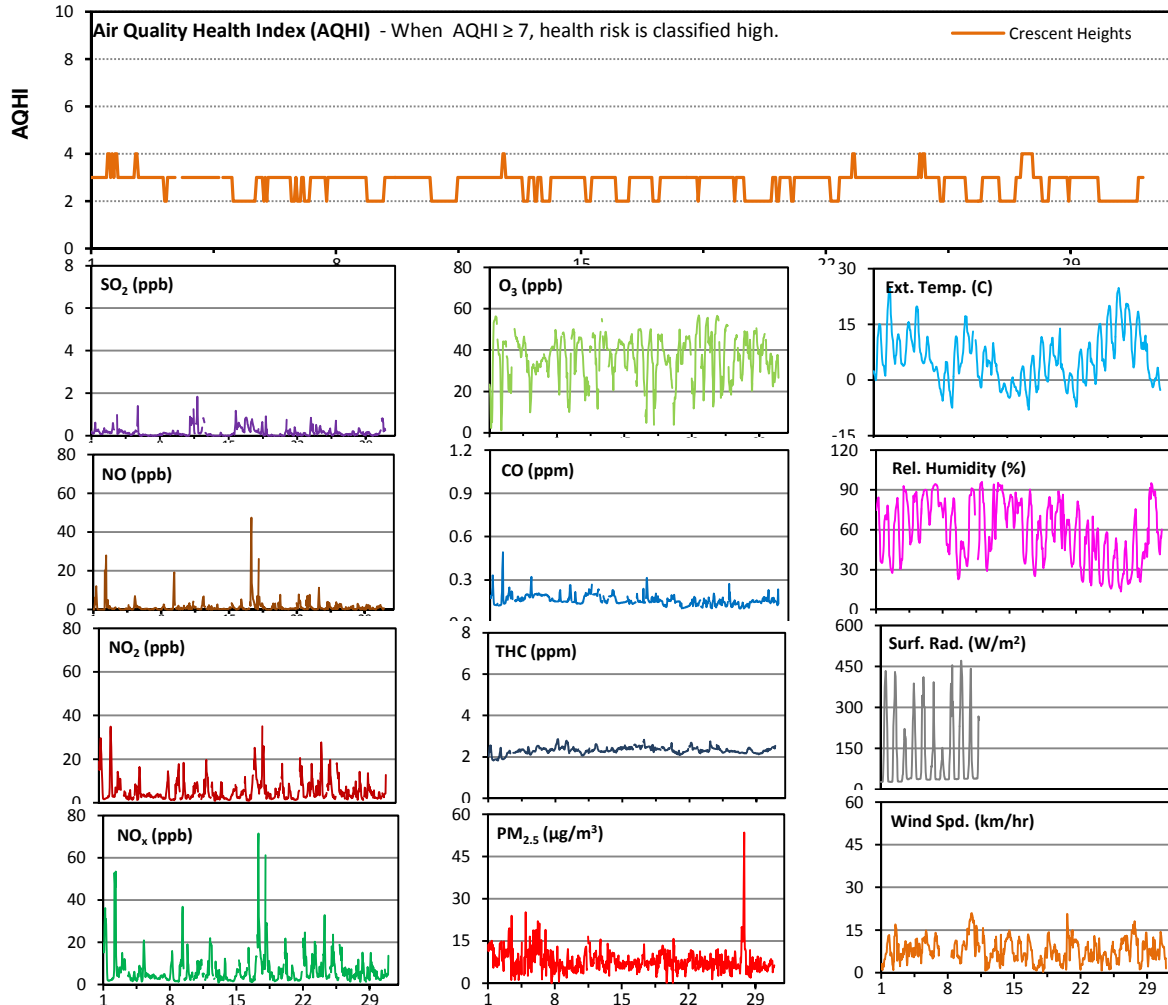


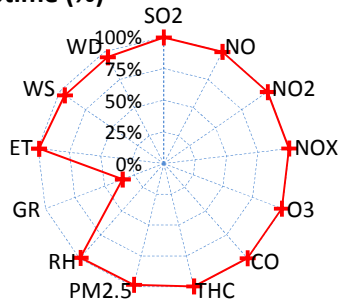
Palliser Airshed Society - April 2013 Summary Report

Continuous Sampling Results - Crescent Heights Station

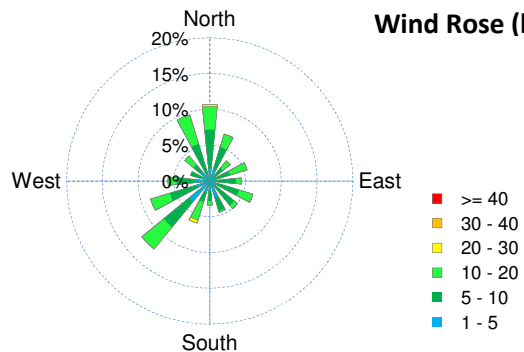
Pollutants		Month Records		24-Hour Records				1-Hour Records			
Name	Conc Unit	Avg. Conc.	Uptime	Maximum		AAAQO Objective	Exceed No.	Maximum		AAAQO Objective	Exceed No.
				Conc	Time			Conc	Time		
SO ₂	ppb	0.2	99.7%	0.6	Apr-11	48	0	1.8	Apr-11 20:00	172	0
NO	ppb	1.4	99.7%	7.0	Apr-17	-	-	47.4	Apr-17 8:00	-	-
NO ₂	ppb	5.5	99.7%	11.6	Apr-17	-	-	35.1	Apr-18 2:00	159	0
NO _x	ppb	6.9	99.7%	18.7	Apr-17	-	-	71.4	Apr-17 8:00	-	-
O ₃	ppb	36	99.7%	42	Apr-21	-	-	57	Apr-22 18:00	82	0
CO	ppm	0.2	99.7%	0.2	Apr-11	-	-	0.5	Apr-02 8:00	13	0
THC	ppm	2.3	99.7%	2.5	Apr-8	-	-	2.9	Apr-08 7:00	-	-
PM _{2.5}	µg/m ³	8	98.5%	13	Apr-27	30	0	54	Apr-27 20:00	-	-



Instrument Uptime (%)



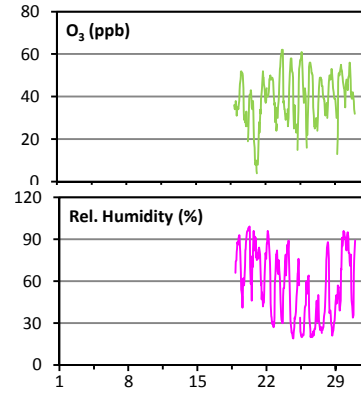
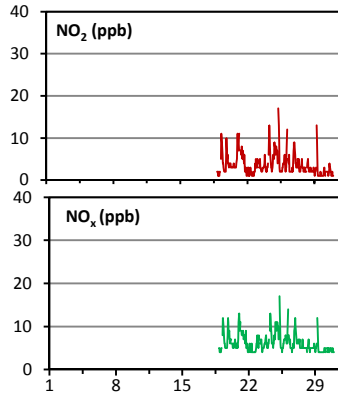
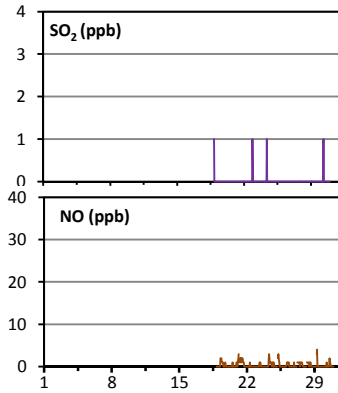
Wind Rose (km/hr)



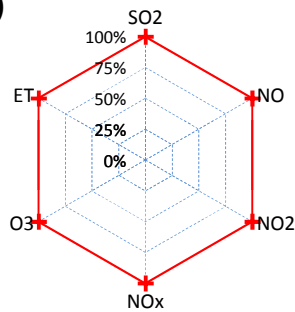
Palliser Airshed Society - April 2013 Summary Report

Continuous Sampling Results - Taber PAML Station

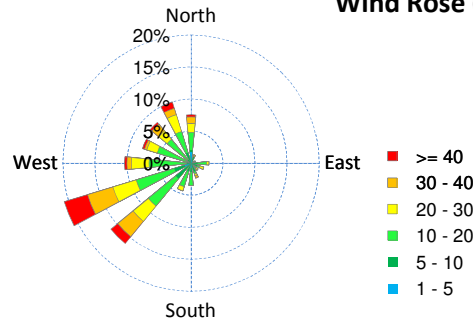
Pollutants		Month Records		24-Hour Records				1-Hour Records			
Name	Conc Unit	Avg. Conc.	Uptime	Maximum		AAAQO Objective	Exceed No.	Maximum		AAAQO Objective	Exceed No.
				Conc	Time			Conc	Time		
SO ₂	ppb	< 0.1	100.0%	< 0.1	Apr-22	48	0	1	Apr-18 21:00	172	0
NO	ppb	0.4	100.0%	1	Apr-21	-	-	4	Apr-29 7:00	-	-
NO ₂	ppb	3.7	100.0%	5.7	Apr-24	-	0	17	Apr-25 6:00	159	0
NO _x	ppb	6.2	100.0%	8	Apr-24	-	-	17	Apr-25 6:00	-	-
O ₃	ppb	40	100.0%	44	Apr-29	-	0	62	Apr-23 16:00	82	0



Instrument Uptime (%)



Wind Rose (km/hr)



Monthly Update

- * All data has been slope, intercept, and baseline corrected. Data may change after validation process.
- * The measured ambient concentrations of all parameters are within the AAAQO for the month of April 2013.
- * All compliance parameters are above 90% operational for the month of April 2013, with the exception of the Global Solar Radiation. The GSR sensor was non-operational following the installation of the new Met equipment. The GSR required some additional electrical components to function properly when connected to the Campbell Sci data logger. ESRD reference number 269060.
- * Routine calibration was performed on April 3, 2013.
- * The operational issues for the month of April include 2 hours of data for all pollutant parameters flagged as "maintenance", when the Met equipment was replaced. 6 hours of data for all Met equipment was flagged as "maintenance" during replacement on April 12. 9 hours of PM2.5 data is flagged as "analyzer failure" throughout the month, due to excessive negative readings. 30 hours of wind speed and direction data is flagged as "analyzer failure" on April 7-8. The GSR sensor was non-operational following the installation of the Met equipment.
- * There is no passive data available for April, due to a transition to a new lab for sample analysis. Passive sampling will resume in May.
- * The Taber Rover station came into operation on April 17. Rover start-up was intended for April 1, however due to winter conditions in the AESRD storage yard, the trailer was not able to be moved. As well, analyzer preparation took longer than anticipated, as all analyzers had been left cold over the winter. Due to data logger programming issues, there is no data available for PM2.5, RH, or WS/WD for the month of April. WS/WD and RH data from Environment Canada's Fincastle station was utilized. All other analyzers functioned at 100% for the time they were operating.