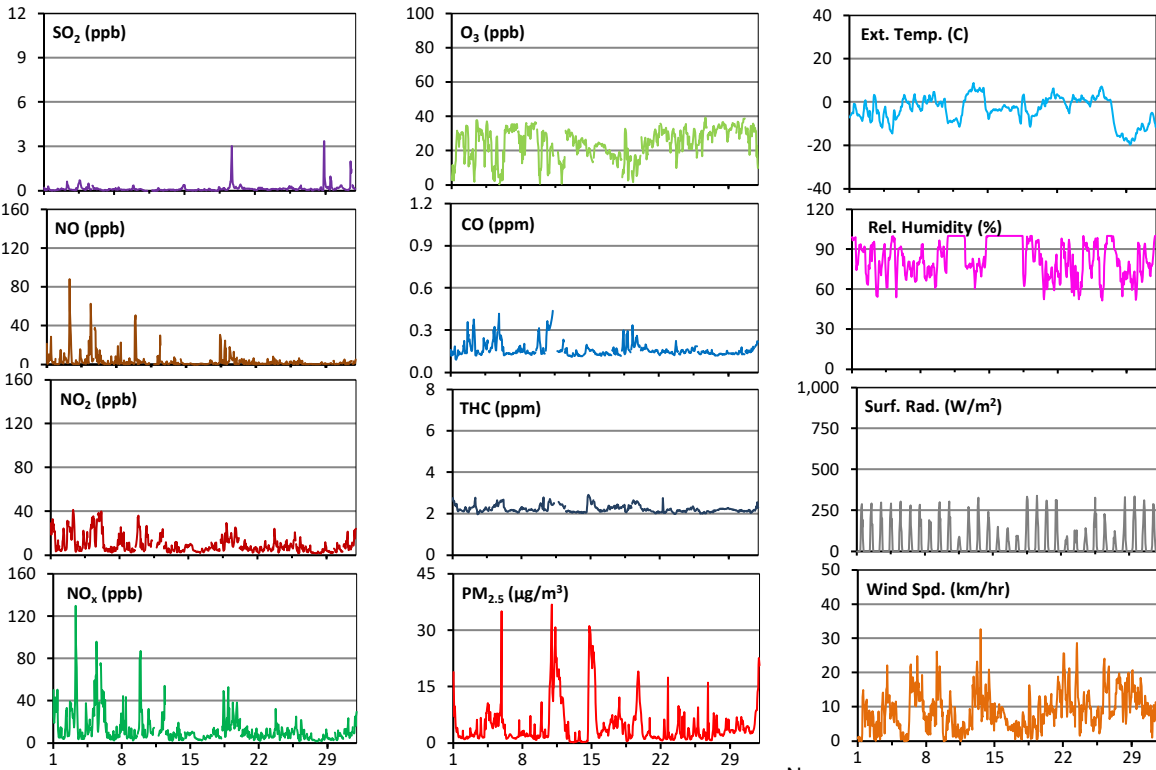
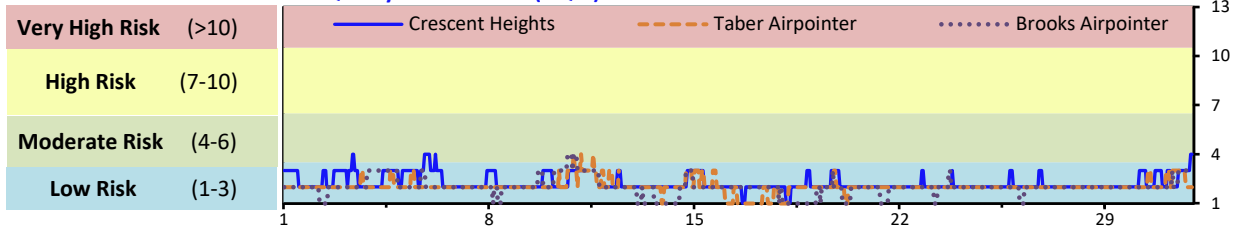


Palliser Airshed Society - January 2023 Summary Report

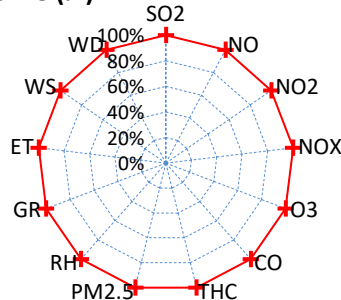
Continuous Sampling Results - Crescent Heights Station

Pollutants		Month Records		24-Hour Records				1-Hour Records			
Name	Conc Unit	Avg. Conc.	Uptime	Maximum		AAAQO Objective	Exceed No.	Maximum		AAAQO Objective	Exceed No.
				Conc	Time			Conc	Time		
SO ₂	ppb	< 1	100.0%	< 1	Jan-19	48	0	3.0	Jan-28 22:00	172	0
NO	ppb	3.2	100.0%	16.3	Jan-5	-	-	87.9	Jan-03 8:00	-	-
NO ₂	ppb	9.4	100.0%	25.9	Jan-5	-	-	41.5	Jan-03 8:00	159	0
NO _x	ppb	12.6	100.0%	42.2	Jan-5	-	-	129.8	Jan-03 8:00	-	-
O ₃	ppb	24	100.0%	34	Jan-29	-	-	39	Jan-26 17:00	76	0
CO	ppm	0.2	100.0%	0.2	Jan-5	-	-	0.4	Jan-11 8:00	13	0
THC	ppm	2.2	100.0%	2.5	Jan-19	-	-	2.9	Jan-14 19:00	-	-
PM _{2.5}	µg/m ³	5	100.0%	18	Jan-11	29	0	37	Jan-11 0:00	80	0

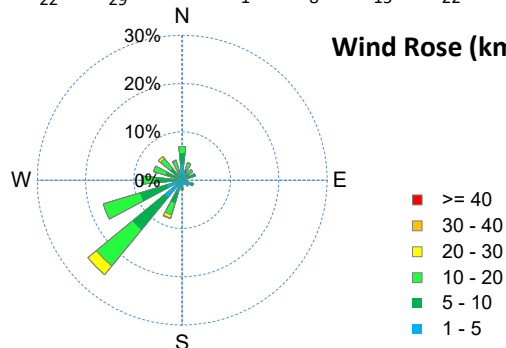
Air Quality Health Index (AQHI)



Instrument Uptime (%)

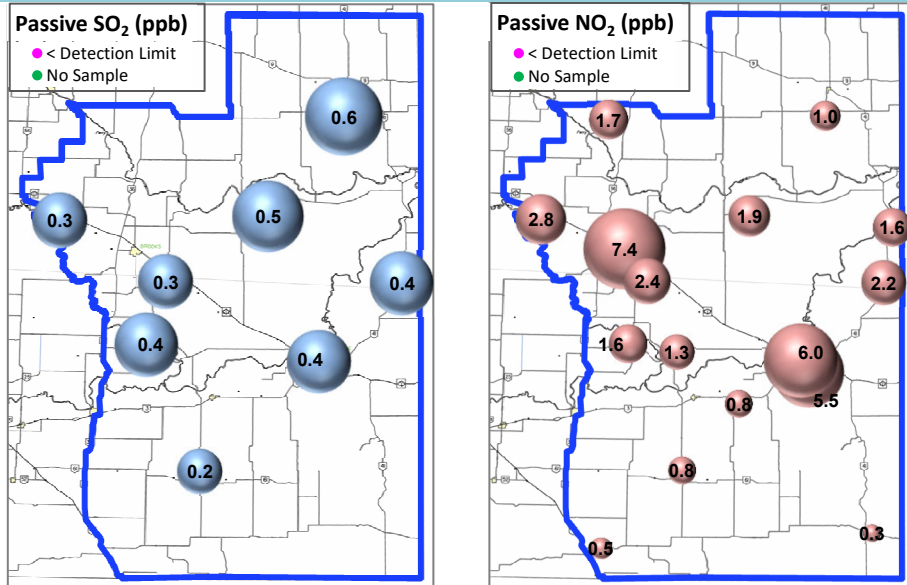


Wind Rose (km/hr)



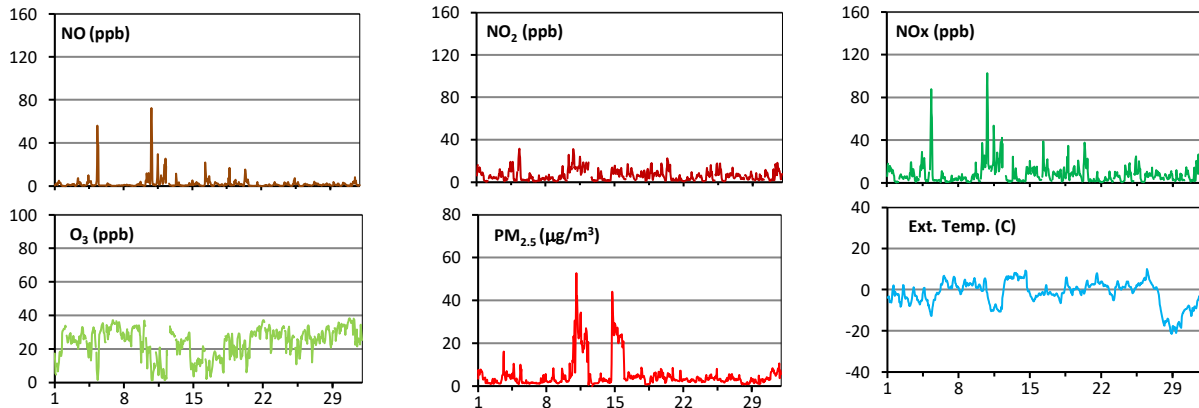
Palliser Airshed Society - January 2023 Summary Report

Passive Sampling Results

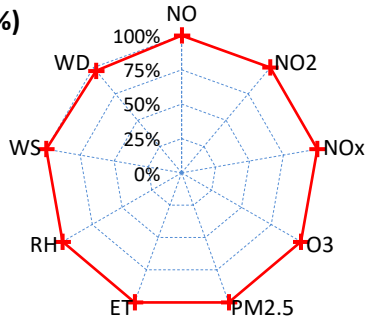


Continuous Sampling Results - Taber Airpointer

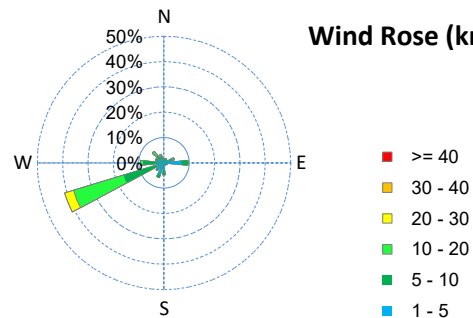
Pollutants	Conc Unit	Month Records		24-Hour Records				1-Hour Records			
		Avg. Conc.	Uptime	Maximum		AAAQO Objective	Exceed No.	Maximum		AAAQO Objective	Exceed No.
				Conc	Time			Conc	Time		
NO	ppb	2.1	100.0%	11.3	Jan-10	-	-	72.5	Jan-10 21:00	-	-
NO ₂	ppb	6.1	100.0%	14.1	Jan-10	-	-	31.7	Jan-05 9:00	159	0
NO _x	ppb	8.2	100.0%	25.5	Jan-10	-	-	102.8	Jan-10 21:00	-	-
O ₃	ppb	24	100.0%	35	Jan-30	-	-	38	Jan-30 18:00	76	0
PM _{2.5}	ug/m3	5	100.0%	26	Jan-11	29	0	53	Jan-11 2:00	80	0



Uptime (%)



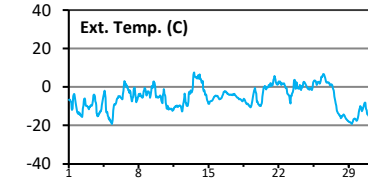
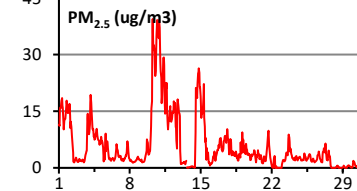
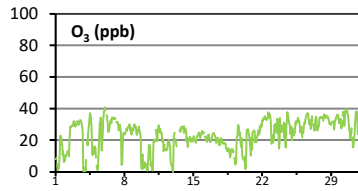
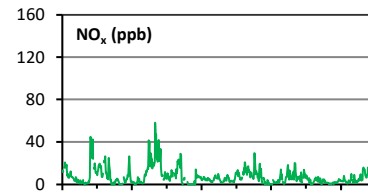
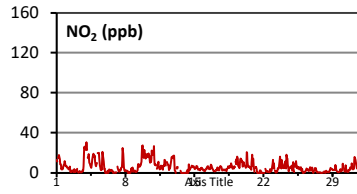
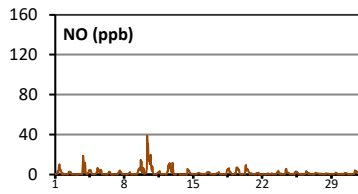
Wind Rose (km/hr)



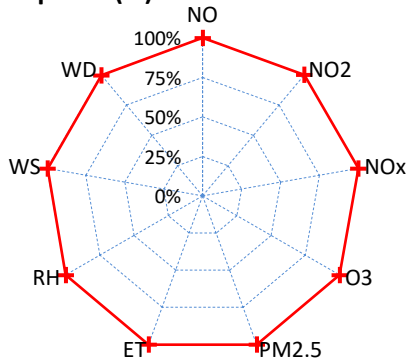
Palliser Airshed Society - January 2023 Summary Report

Continuous Sampling Results - Brooks

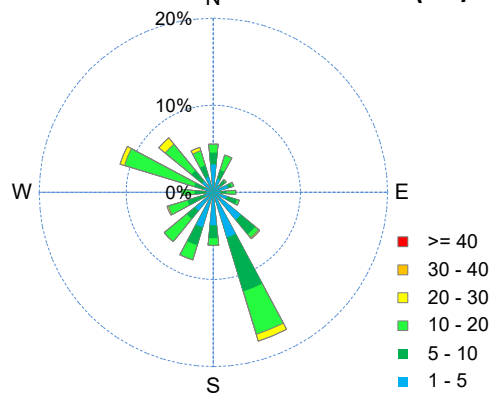
Pollutants		Month Records		24-Hour Records				1-Hour Records			
Name	Conc Unit	Avg. Conc.	Uptime	Maximum		AAAQO Objective	Exceed No.	Maximum		AAAQO Objective	Exceed No.
				Conc	Time			Conc	Time		
NO	ppb	1.6	100.0%	10.4	Jan-10	-	-	39.0	Jan-10 9:00	-	-
NO ₂	ppb	5.7	100.0%	16.3	Jan-10	-	-	30.8	Jan-04 2:00	159	0
NO _x	ppb	7.3	100.0%	26.7	Jan-10	-	-	58.4	Jan-10 9:00	-	-
O ₃	ppb	24	100.0%	34	Jan-28	-	-	41	Jan-06 1:00	76	0
PM _{2.5}	ug/m3	6	100.0%	29	Jan-10	29	0	39	Jan-10 7:00	80	0



Instrument Uptime (%)



Wind Rose (km/hr)



Monthly Update

*All data has been validated; data may change after validation process.

*The measured ambient concentrations of all parameters are within the AAAQO.

*All compliance parameters at Crescent Heights, Taber and Brooks had > 90% operational uptime.