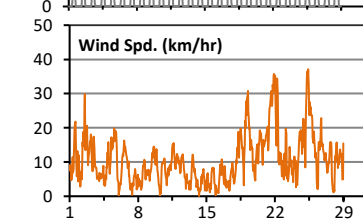
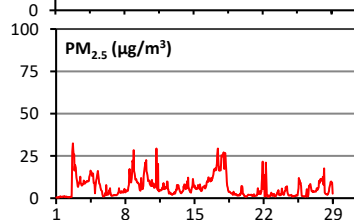
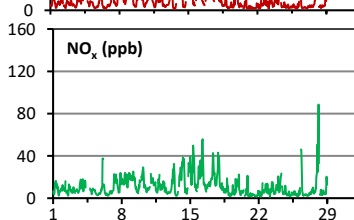
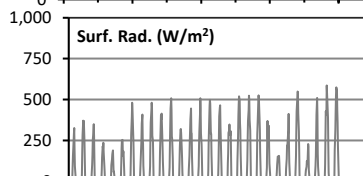
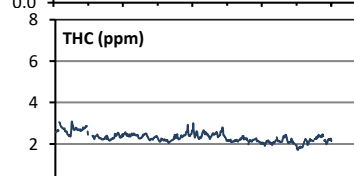
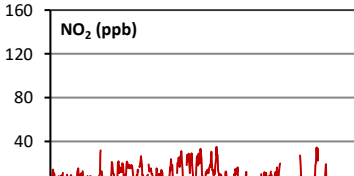
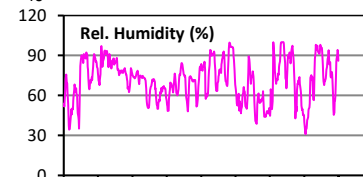
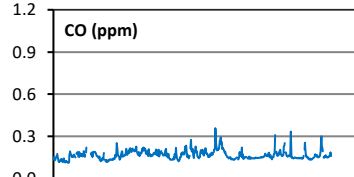
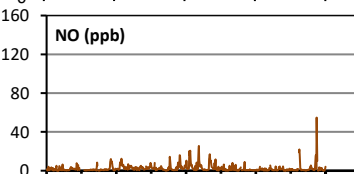
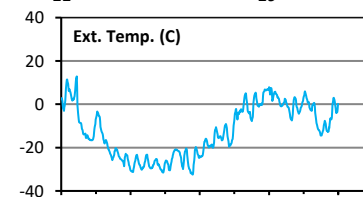
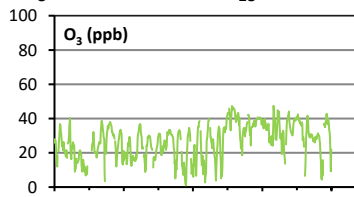
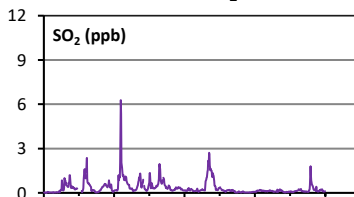
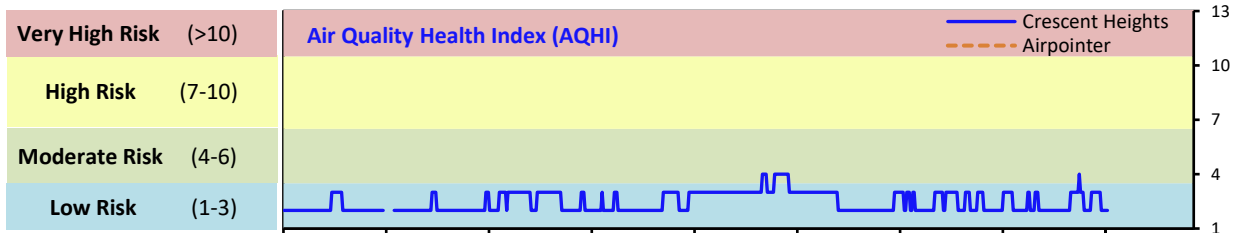


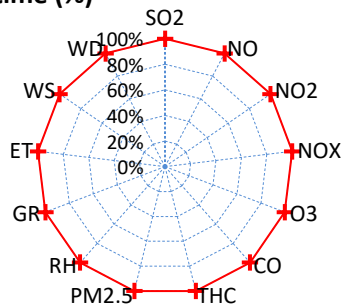
Palliser Airshed Society - February 2021 Summary Report

Continuous Sampling Results - Crescent Heights Station

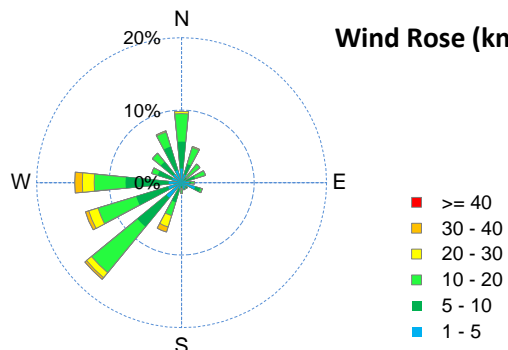
Pollutants		Month Records		24-Hour Records				1-Hour Records			
Name	Conc Unit	Avg. Conc.	Uptime	Maximum		AAAQO	Exceed	Maximum		AAAQO	Exceed
				Conc	Time	Objective	No.	Conc	Time	Objective	No.
SO ₂	ppb	< 1	100.0%	1	Feb-17	48	0	6	Feb-08 16:00	172	0
NO	ppb	2.5	100.0%	5.8	Feb-15	-	-	54.8	Feb-28 3:00	-	-
NO ₂	ppb	8.8	100.0%	18.7	Feb-17	-	-	35.1	Feb-17 21:00	159	0
NO _x	ppb	11.2	100.0%	23.5	Feb-17	-	-	88.6	Feb-28 3:00	-	-
O ₃	ppb	27	100.0%	39	Feb-21	-	-	47	Feb-23 4:00	76	0
CO	ppm	0.2	100.0%	0.2	Feb-17	-	-	0.4	Feb-17 8:00	13	0
THC	ppm	2.3	100.0%	2.7	Feb-1	-	-	3.1	Feb-02 17:00	-	-
PM _{2.5}	µg/m ³	7	100.0%	21	Feb-17	29	0	32	Feb-02 17:00	80	0



Instrument Uptime (%)

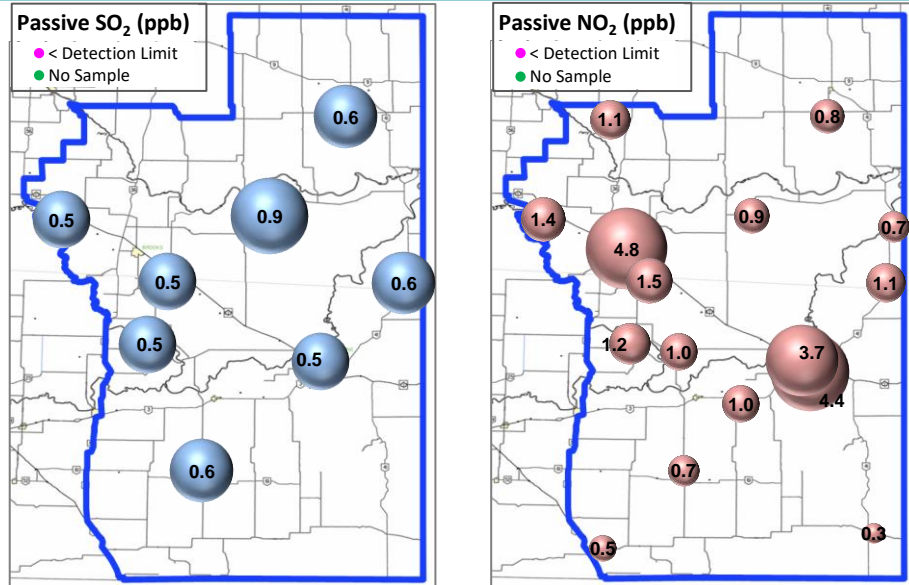


Wind Rose (km/hr)



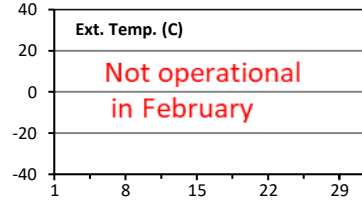
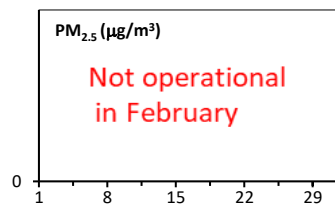
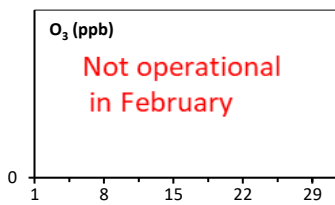
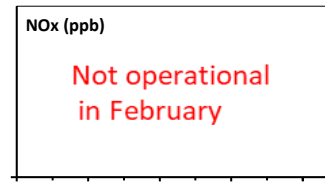
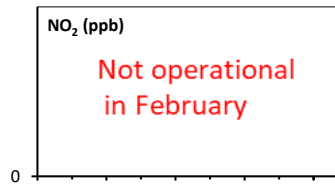
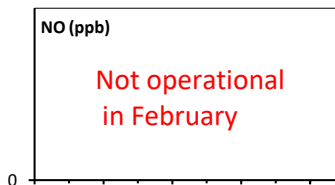
Palliser Airshed Society - February 2021 Summary Report

Passive Sampling Results

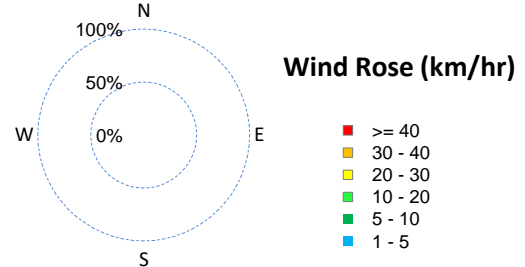
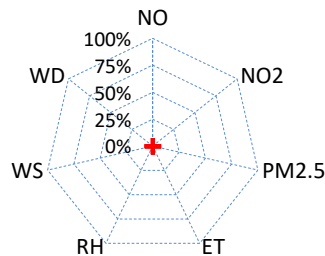


Continuous Sampling Results - Medicine Hat Trap Club

Pollutants	Conc Unit	Month Records		24-Hour Records				1-Hour Records			
		Avg. Conc.	Uptime	Maximum		AAAQO Objective	Exceed No.	Maximum		AAAQO Objective	Exceed No.
				Conc	Time			Conc	Time		
NO	ppb	-	0.0%	-	-	-	-	-	-	-	-
NO ₂	ppb	-	0.0%	-	-	-	-	-	-	159	0
NO _x	ppb	-	0.0%	-	-	-	-	-	-	-	-
O ₃	ppb	-	0.0%	-	-	-	-	-	-	76	0
PM _{2.5}	ug/m3	-	0.0%	-	-	29	0	-	-	80	0



Uptime (%)



Monthly Update

*All data has been validated; data may change after validation process.

*The measured ambient concentrations of all parameters are within the AAAQO.

*All compliance parameters at Crescent Heights had > 90% operational uptime.

*All compliance parameters at Medicine Hat Trap Club had < 90% operational uptime. The station was shutdown on January 13 due to computer issues with the Airpointer.