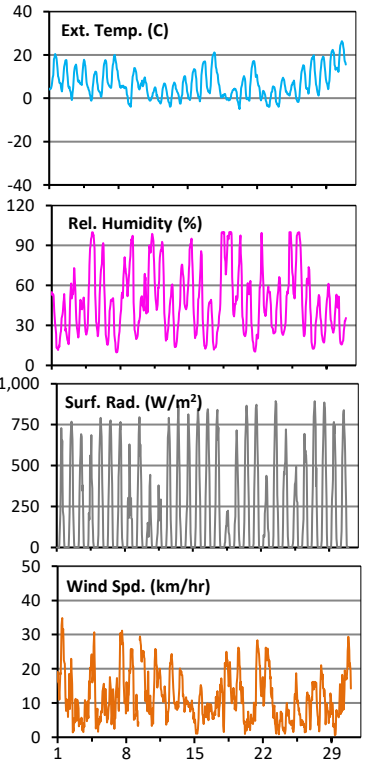
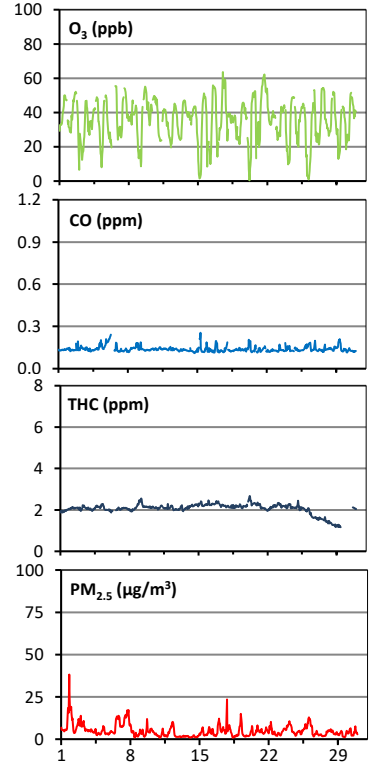
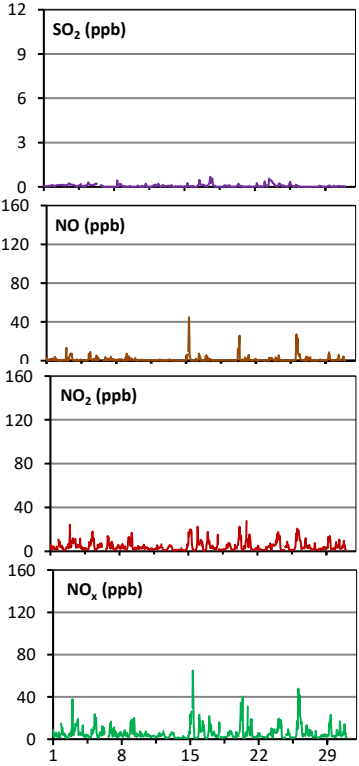
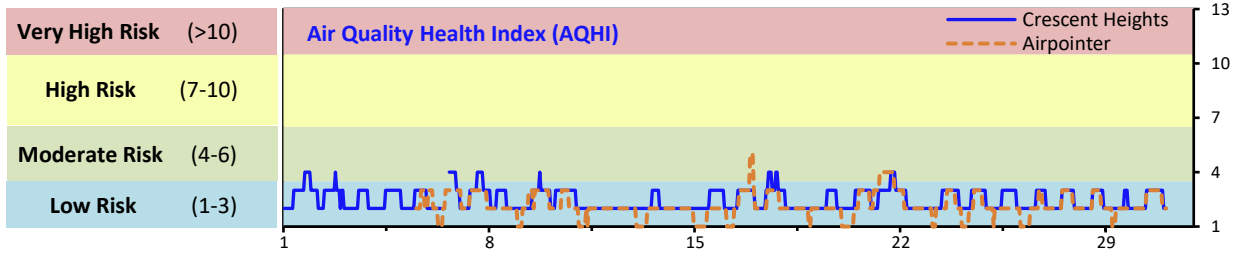


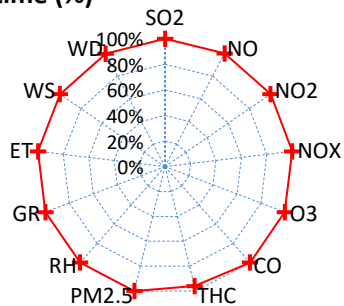
# Palliser Airshed Society - April 2021 Summary Report

## Continuous Sampling Results - Crescent Heights Station

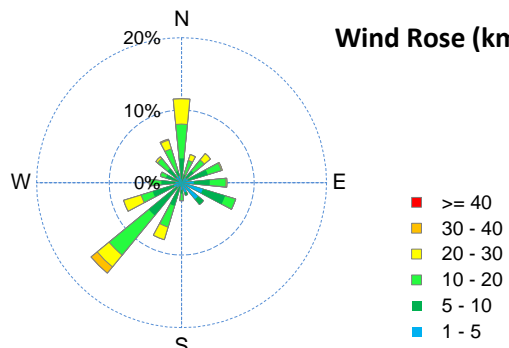
Pollutants	Month Records			24-Hour Records				1-Hour Records				
	Name	Conc Unit	Avg. Conc.	Uptime	Maximum		AAAQO Objective	Exceed No.	Maximum		AAAQO Objective	Exceed No.
					Conc	Time			Conc	Time		
SO <sub>2</sub>	ppb	< 1	100.0%	< 1	Apr-23	48	0	0.7	Apr-17 14:00	172	0	
NO	ppb	1.3	100.0%	5.8	Apr-26	-	-	44.9	Apr-15 7:00	-	-	
NO <sub>2</sub>	ppb	4.5	100.0%	9.3	Apr-26	-	-	27.7	Apr-20 22:00	159	0	
NO <sub>x</sub>	ppb	5.9	100.0%	15.2	Apr-26	-	-	65.0	Apr-15 7:00	-	-	
O <sub>3</sub>	ppb	35	100.0%	46	Apr-21	-	-	64	Apr-17 13:00	76	0	
CO	ppm	0.1	100.0%	0.2	Apr-5	-	-	0.3	Apr-15 8:00	13	0	
THC	ppm	2.1	96.0%	2.4	Apr-20	-	-	2.7	Apr-20 5:00	-	-	
PM <sub>2.5</sub>	µg/m <sup>3</sup>	5	100.0%	11	Apr-7	29	0	38	Apr-01 20:00	80	0	



Instrument Uptime (%)

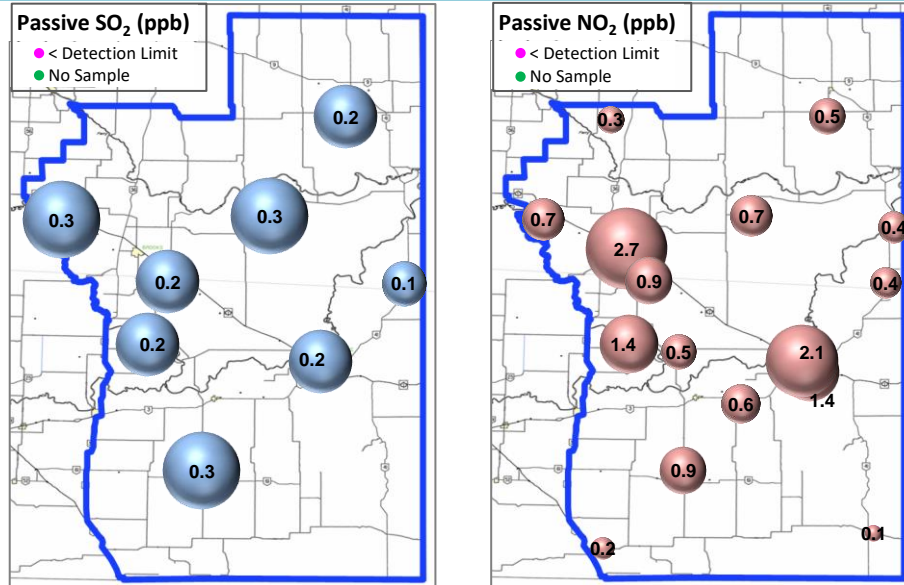


Wind Rose (km/hr)



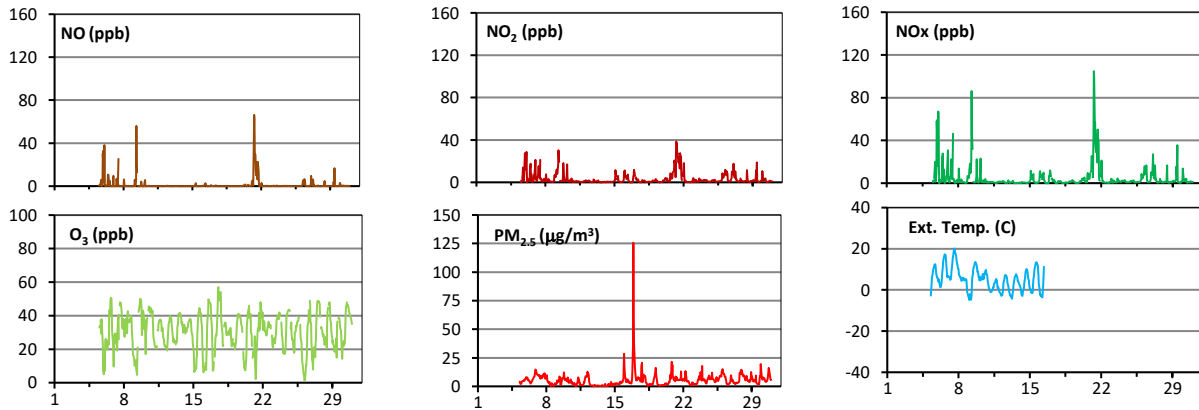
# Palliser Airshed Society - April 2021 Summary Report

## Passive Sampling Results

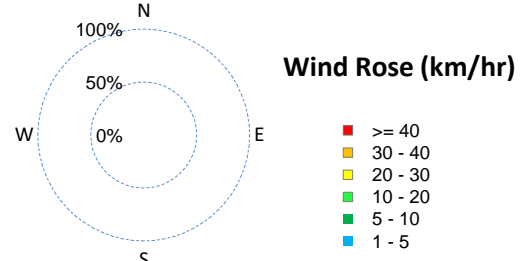
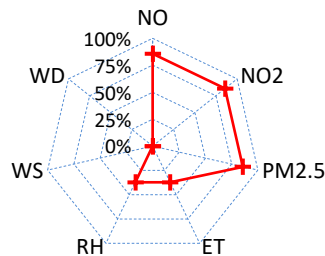


## Continuous Sampling Results - Medicine Hat Trap Club

Pollutants	Conc Unit	Month Records		24-Hour Records				1-Hour Records			
		Avg. Conc.	Uptime	Maximum		AAAQO Objective	Exceed No.	Maximum		AAAQO Objective	Exceed No.
				Conc	Time			Conc	Time		
NO	ppb	1.5	85.7%	20.5	Apr-21	-	-	66.3	Apr-21 7:00	-	-
NO <sub>2</sub>	ppb	3.4	85.7%	18.5	Apr-21	-	-	38.5	Apr-21 7:00	159	0
NO <sub>x</sub>	ppb	4.8	85.7%	33.7	Apr-21	-	-	104.8	Apr-21 7:00	-	-
O <sub>3</sub>	ppb	31	85.7%	38	Apr-10	-	-	57	Apr-17 13:00	76	0
PM <sub>2.5</sub>	ug/m3	6	85.7%	15	Apr-16	29	0	126	Apr-16 22:00	80	1



Uptime (%)



## Monthly Update

\*All data has been validated; data may change after validation process.

\*The measured ambient concentrations of all parameters are within the AAAQO with the exception of one 1-hr PM<sub>2.5</sub> at the Medicine Hat Trap Club station.

\*All compliance parameters at Crescent Heights had > 90% operational uptime.

\*All compliance parameters at Medicine Hat Trap Club had < 90% operational uptime.