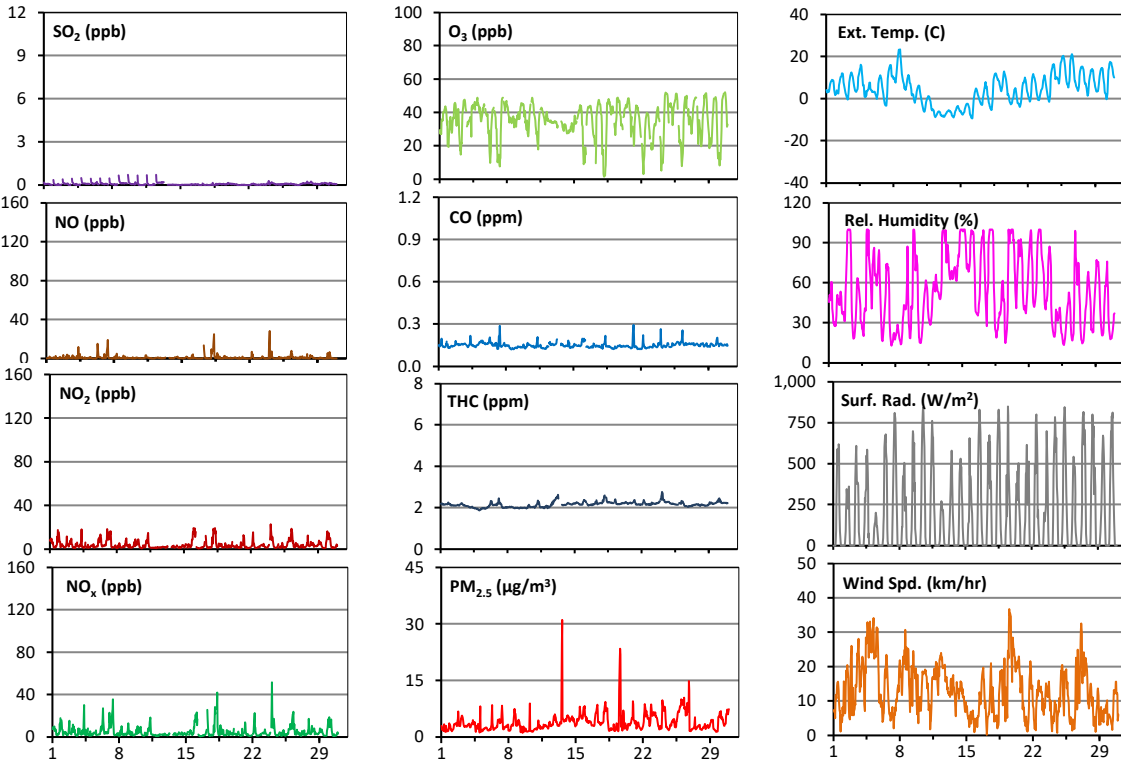
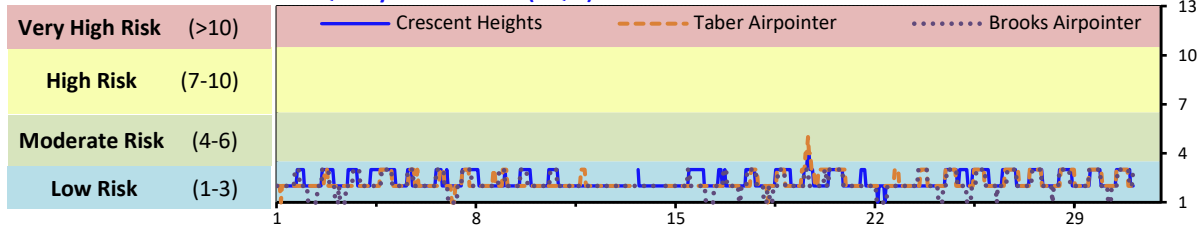


# Palliser Airshed Society - April 2022 Summary Report

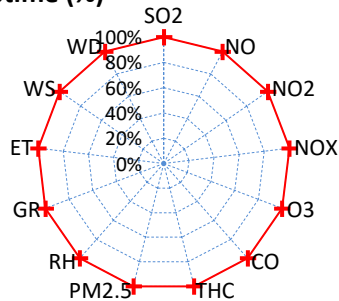
## Continuous Sampling Results - Crescent Heights Station

Pollutants		Month Records		24-Hour Records				1-Hour Records			
Name	Conc Unit	Avg. Conc.	Uptime	Maximum		AAAQO	Exceed	Maximum		AAAQO	Exceed
				Conc	Time	Objective	No.	Conc	Time	Objective	No.
SO <sub>2</sub>	ppb	< 1	100.0%	< 1	Apr-9	48	0	1.0	Apr-09 16:00	172	0
NO	ppb	1.0	100.0%	3.9	Apr-18	-	-	28.5	Apr-24 2:00	-	-
NO <sub>2</sub>	ppb	3.9	100.0%	6.9	Apr-18	-	-	23.0	Apr-24 2:00	159	0
NO <sub>x</sub>	ppb	4.8	100.0%	10.8	Apr-18	-	-	51.6	Apr-24 2:00	-	-
O <sub>3</sub>	ppb	35	100.0%	42	Apr-25	-	-	52	Apr-30 18:00	76	0
CO	ppm	0.1	100.0%	0.2	Apr-26	-	-	0.3	Apr-21 6:00	13	0
THC	ppm	2.2	100.0%	2.4	Apr-24	-	-	2.8	Apr-24 4:00	-	-
PM <sub>2.5</sub>	µg/m <sup>3</sup>	4	100.0%	8	Apr-26	29	0	31	Apr-13 15:00	80	0

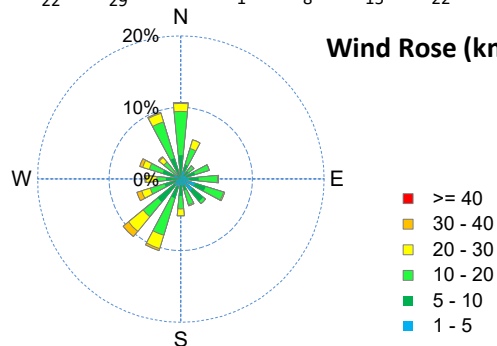
### Air Quality Health Index (AQHI)



### Instrument Uptime (%)

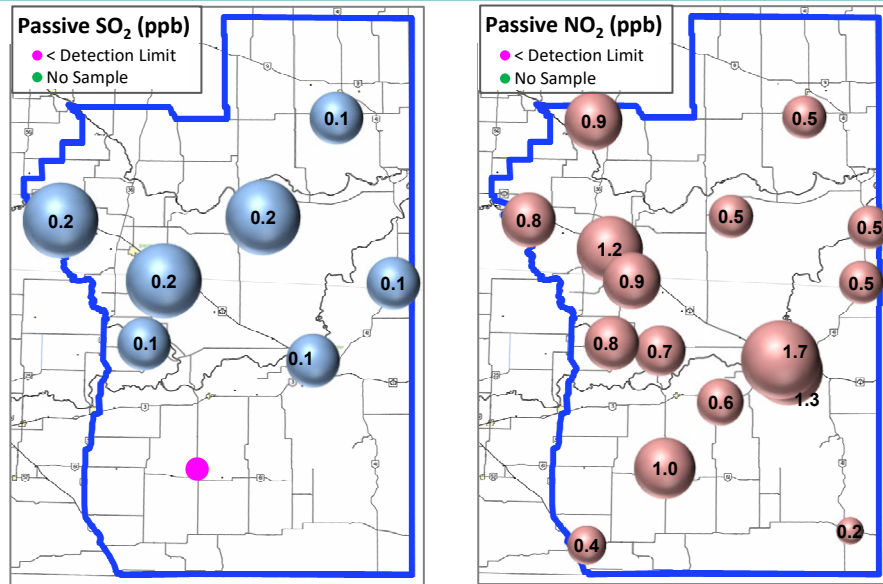


### Wind Rose (km/hr)



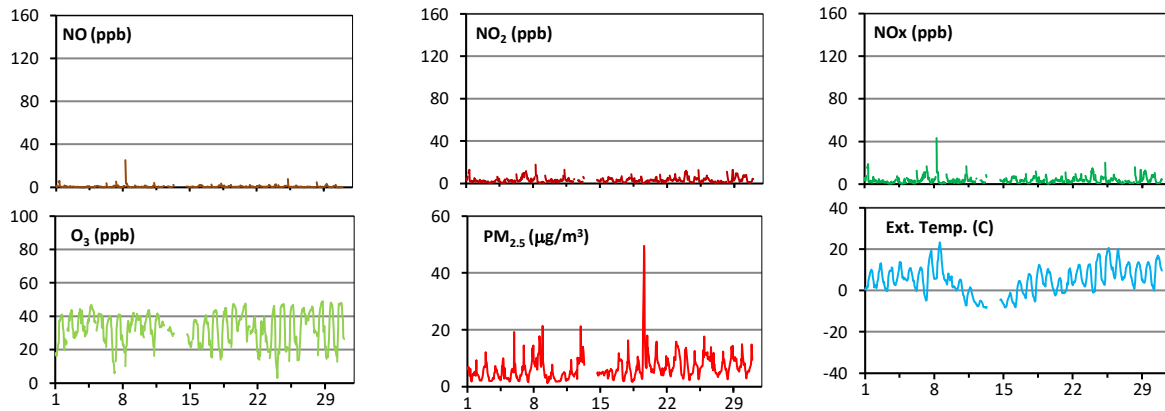
# Palliser Airshed Society - April 2022 Summary Report

## Passive Sampling Results

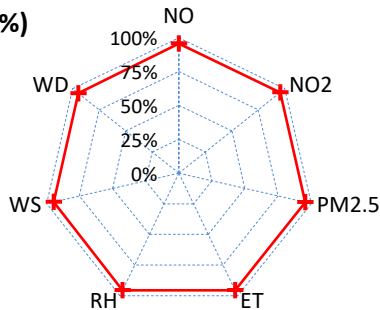


## Continuous Sampling Results - Taber Airpointer

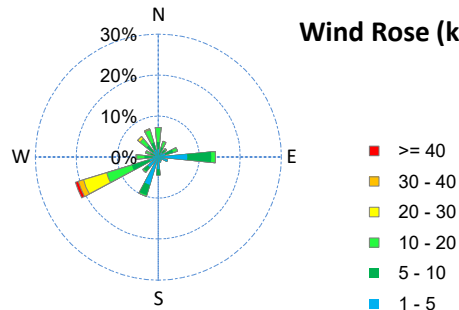
Pollutants	Conc Unit	Month Records		24-Hour Records				1-Hour Records			
		Avg. Conc.	Uptime	Maximum		AAAQO Objective	Exceed No.	Maximum		AAAQO Objective	Exceed No.
				Conc	Time			Conc	Time		
NO	ppb	0.5	95.6%	2.0	Apr-8	-	-	25.4	Apr-08 7:00	-	-
NO <sub>2</sub>	ppb	3.1	95.6%	5.0	Apr-29	-	-	18.1	Apr-08 7:00	159	0
NO <sub>x</sub>	ppb	3.6	95.6%	5.8	Apr-7	-	-	43.4	Apr-08 7:00	-	-
O <sub>3</sub>	ppb	33	95.6%	40	Apr-27	-	-	49	Apr-28 19:00	76	0
PM <sub>2.5</sub>	ug/m3	6	95.6%	13	Apr-19	29	0	49	Apr-19 15:00	80	0



### Uptime (%)



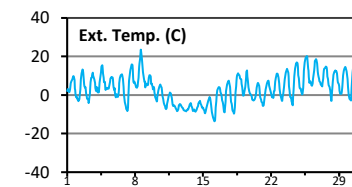
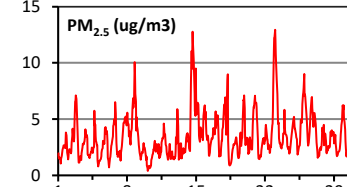
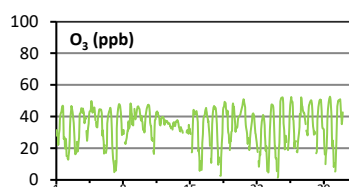
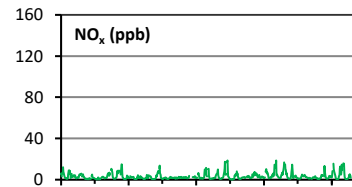
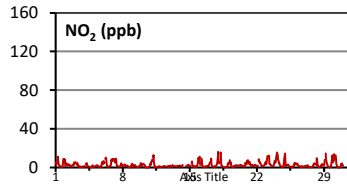
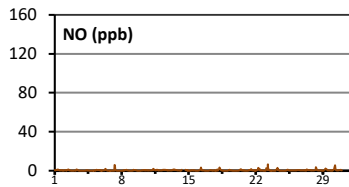
### Wind Rose (km/hr)



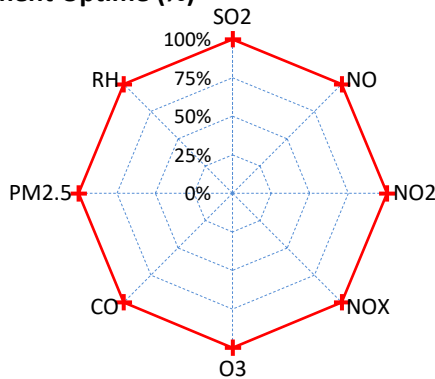
# Palliser Airshed Society - April 2022 Summary Report

## Continuous Sampling Results - Brooks

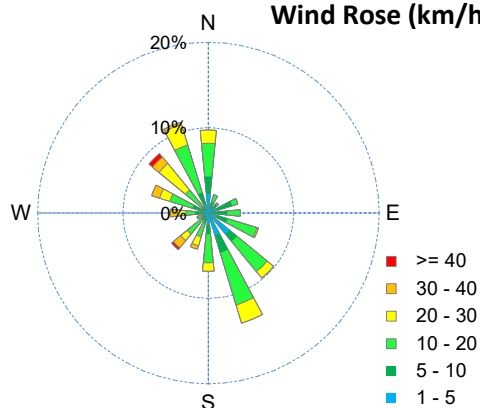
Pollutants		Month Records		24-Hour Records				1-Hour Records			
Name	Conc Unit	Avg. Conc.	Uptime	Maximum		AAAQO Objective	Exceed No.	Maximum		AAAQO Objective	Exceed No.
				Conc	Time			Conc	Time		
NO	ppb	0.4	100.0%	0.9	Apr-30	-	-	6.5	Apr-23 7:00	-	-
NO <sub>2</sub>	ppb	2.7	100.0%	5.7	Apr-24	-	-	16.3	Apr-18 0:00	159	0
NO <sub>x</sub>	ppb	3.0	100.0%	6.0	Apr-24	-	-	18.8	Apr-23 7:00	-	-
O <sub>3</sub>	ppb	34	100.0%	42	Apr-20	-	-	53	Apr-29 16:00	76	0
PM <sub>2.5</sub>	ug/m3	3	100.0%	7	Apr-14	29	0	13	Apr-23 1:00	80	0



Instrument Uptime (%)



Wind Rose (km/hr)



## Monthly Update

\*All data has been validated; data may change after validation process.

\*The measured ambient concentrations of all parameters are within the AAAQO.

\*All compliance parameters at Crescent Heights, Taber and Brooks had > 90% operational uptime.