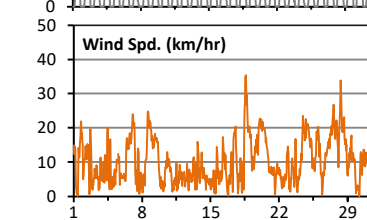
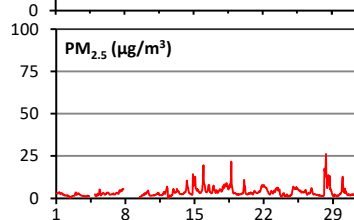
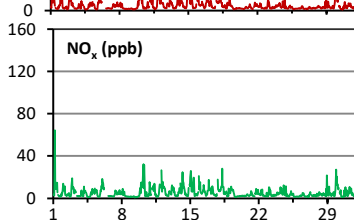
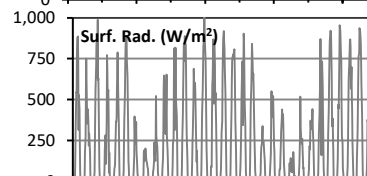
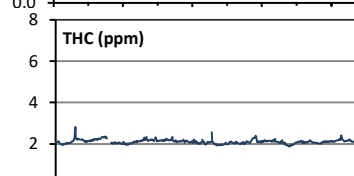
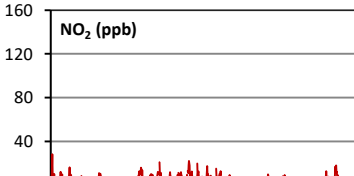
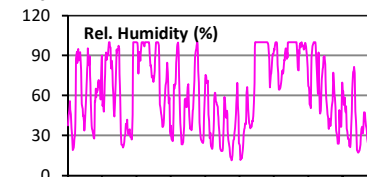
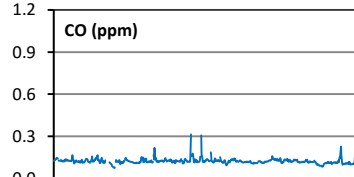
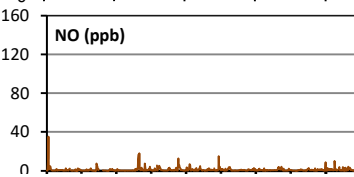
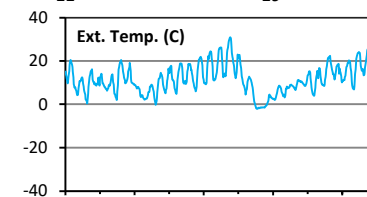
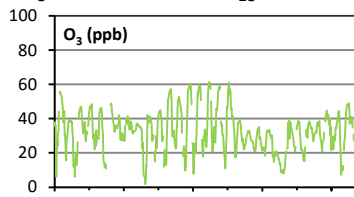
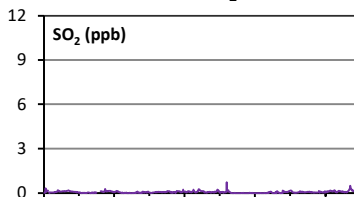
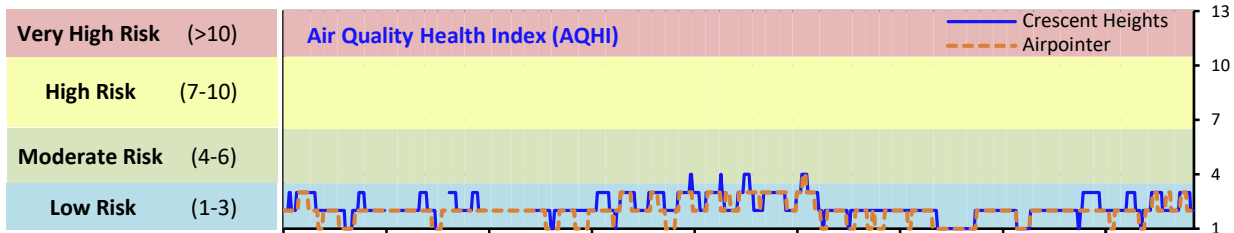


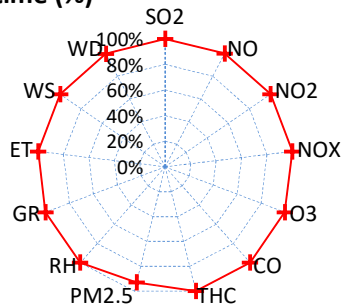
# Palliser Airshed Society - May 2021 Summary Report

## Continuous Sampling Results - Crescent Heights Station

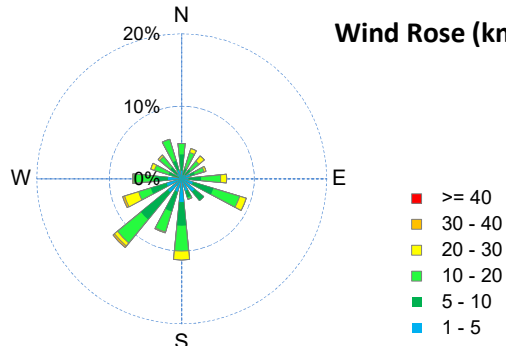
Pollutants		Month Records		24-Hour Records				1-Hour Records			
Name	Conc Unit	Avg. Conc.	Uptime	Maximum		AAAQO Objective	Exceed No.	Maximum		AAAQO Objective	Exceed No.
				Conc	Time			Conc	Time		
SO <sub>2</sub>	ppb	< 1	100.0%	< 1	May-31	48	0	0.7	May-19 5:00	172	0
NO	ppb	1.0	100.0%	3.4	May-10	-	-	35.4	May-01 5:00	-	-
NO <sub>2</sub>	ppb	4.2	100.0%	8.0	May-15	-	-	28.7	May-01 5:00	159	0
NO <sub>x</sub>	ppb	5.3	100.0%	9.4	May-15	-	-	64.5	May-01 5:00	-	-
O <sub>3</sub>	ppb	33	100.0%	41	May-17	-	-	61	May-16 16:00	76	0
CO	ppm	0.1	100.0%	0.1	May-15	-	-	0.3	May-14 21:00	13	0
THC	ppm	2.1	100.0%	2.3	May-5	-	-	2.8	May-03 1:00	-	-
PM <sub>2.5</sub>	µg/m <sup>3</sup>	4	93.0%	9	May-28	29	0	26	May-28 8:00	80	0



Instrument Uptime (%)

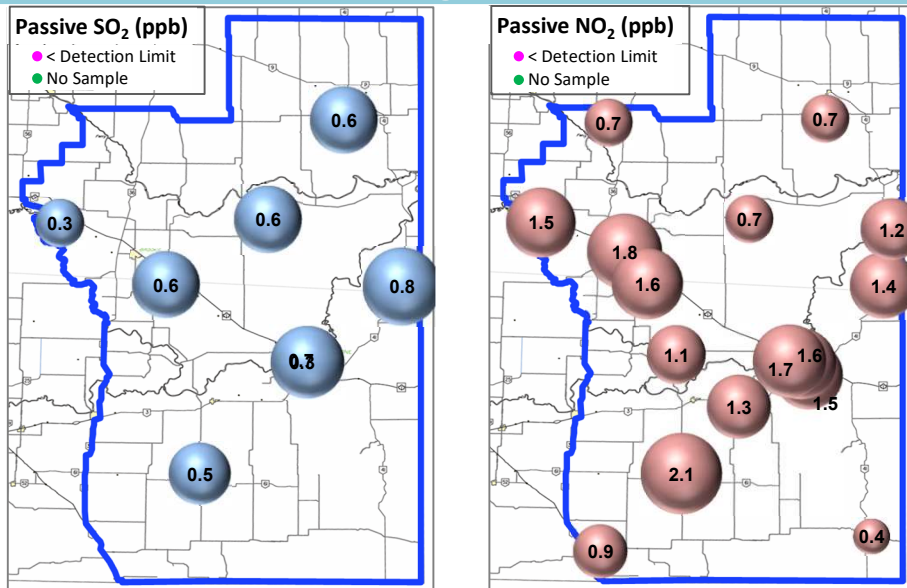


Wind Rose (km/hr)



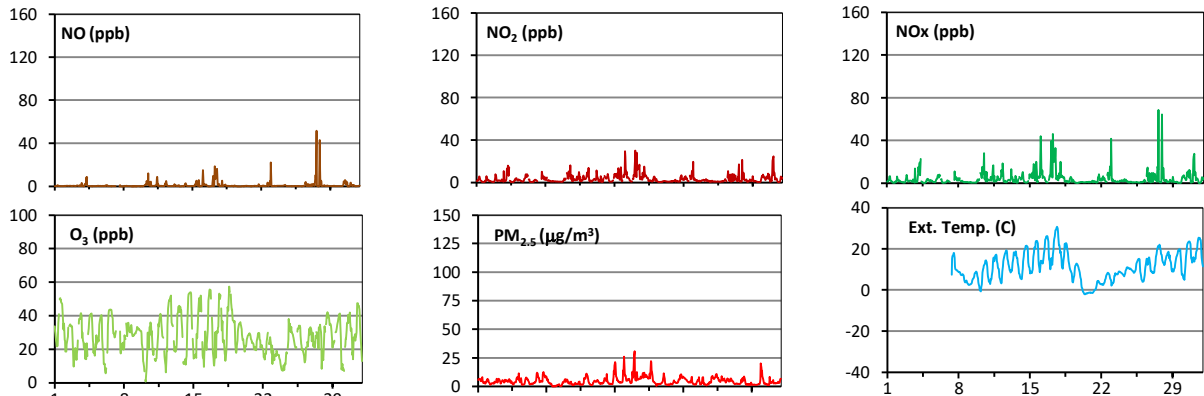
# Palliser Airshed Society - May 2021 Summary Report

## Passive Sampling Results

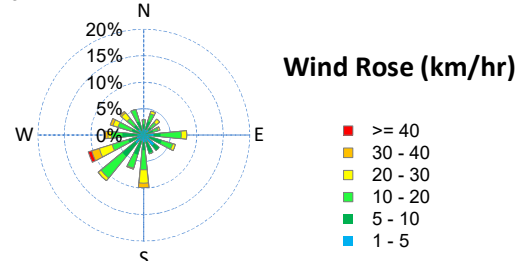
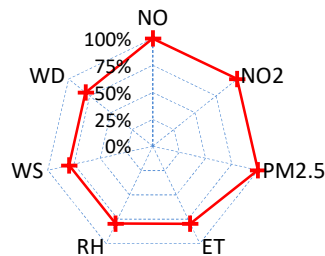


## Continuous Sampling Results - Medicine Hat Trap Club

Pollutants	Conc Unit	Month Records		24-Hour Records				1-Hour Records			
		Avg. Conc.	Uptime	Maximum		AAAQO Objective	Exceed No.	Maximum		AAAQO Objective	Exceed No.
				Conc	Time			Conc	Time		
NO	ppb	0.9	100.0%	6.3	May-27	-	-	51.7	May-27 15:00	-	-
NO <sub>2</sub>	ppb	3.3	100.0%	10.9	May-17	-	-	30.0	May-17 3:00	159	0
NO <sub>x</sub>	ppb	4.2	100.0%	15.6	May-17	-	-	68.8	May-27 15:00	-	-
O <sub>3</sub>	ppb	28	100.0%	36	May-1	-	-	57	May-18 15:00	76	0
PM <sub>2.5</sub>	ug/m3	5	100.0%	10	May-18	29	0	31	May-17 1:00	80	0



Uptime (%)



## Monthly Update

\*All data has been validated; data may change after validation process.

\*The measured ambient concentrations of all parameters are within the AAAQO.

\*All compliance parameters at Crescent Heights had > 90% operational uptime.

\*All compliance parameters at Medicine Hat Trap Club had > 90% operational uptime. All meteorological parameters had <90% operational uptime.