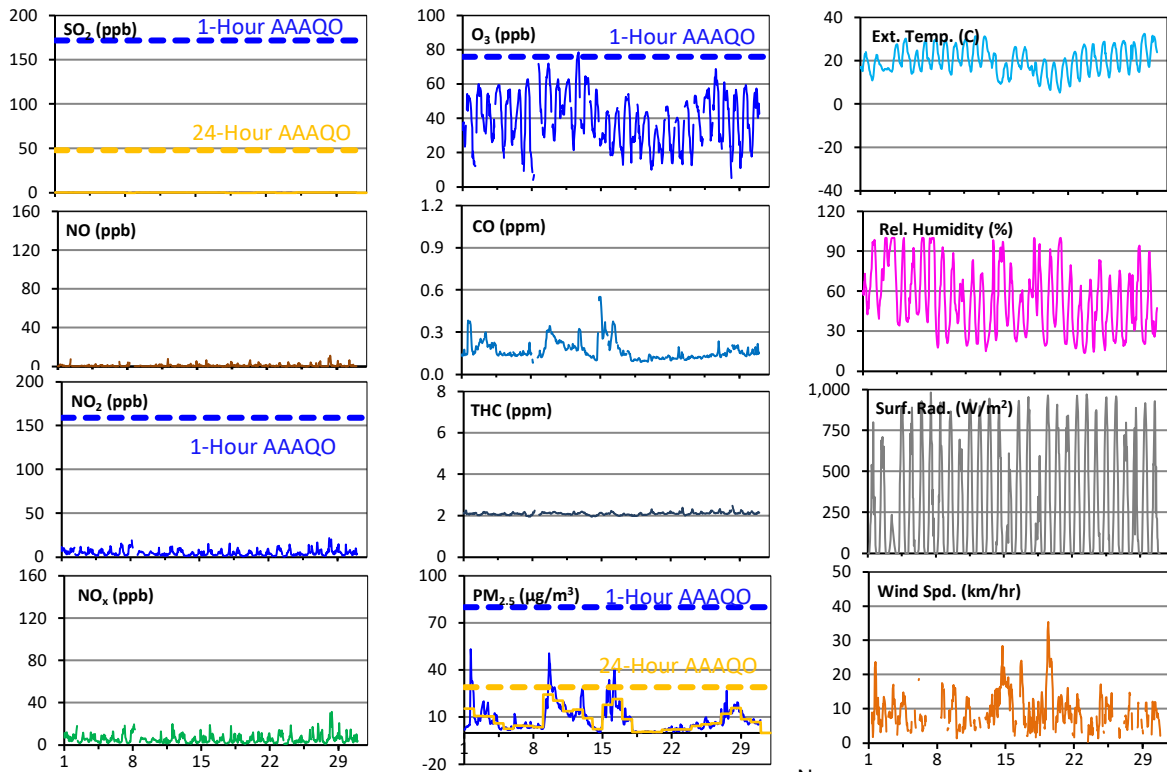
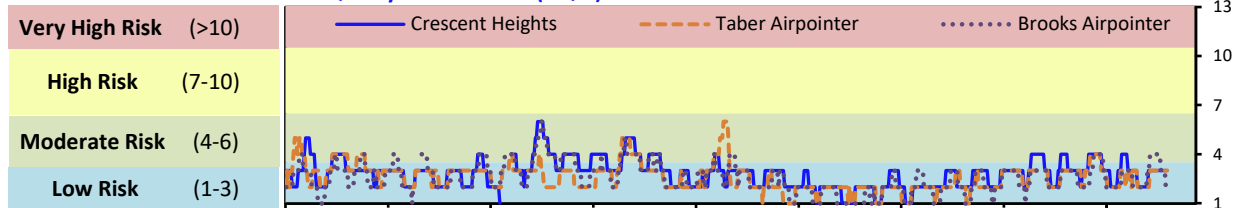


# Palliser Airshed Society - June 2023 Summary Report

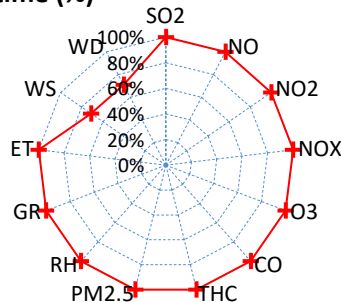
## Continuous Sampling Results - Crescent Heights Station

Pollutants		Month Records		24-Hour Records				1-Hour Records			
Name	Conc Unit	Avg. Conc.	Uptime	Maximum		AAAQO Objective	Exceed No.	Maximum		AAAQO Objective	Exceed No.
				Conc	Time			Conc	Time		
SO <sub>2</sub>	ppb	< 1	100.0%	< 1	Jun-2	48	0	< 1	Jun-17 8:00	172	0
NO	ppb	0.7	100.0%	1.8	Jun-28	-	-	11.1	Jun-28 9:00	-	-
NO <sub>2</sub>	ppb	4.6	100.0%	8.6	Jun-28	-	-	21.7	Jun-28 5:00	159	0
NO <sub>x</sub>	ppb	5.4	100.0%	10.6	Jun-28	-	-	31.5	Jun-28 9:00	-	-
O <sub>3</sub>	ppb	40	100.0%	53	Jun-11	-	-	79	Jun-12 18:00	76	2
CO	ppm	0.2	100.0%	0.3	Jun-15	-	-	0.6	Jun-15 0:00	13	0
THC	ppm	2.1	100.0%	2.2	Jun-28	-	-	2.5	Jun-28 7:00	-	-
PM <sub>2.5</sub>	µg/m <sup>3</sup>	9	100.0%	24	Jun-9	29	0	53	Jun-01 16:00	80	26

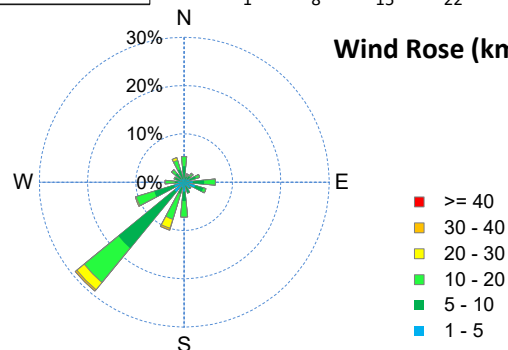
### Air Quality Health Index (AQHI)



### Instrument Uptime (%)

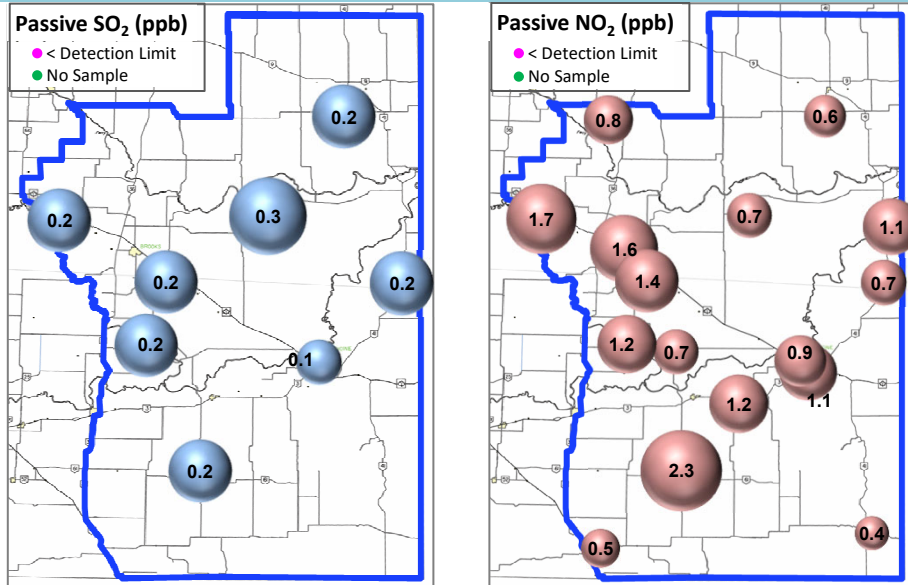


### Wind Rose (km/hr)



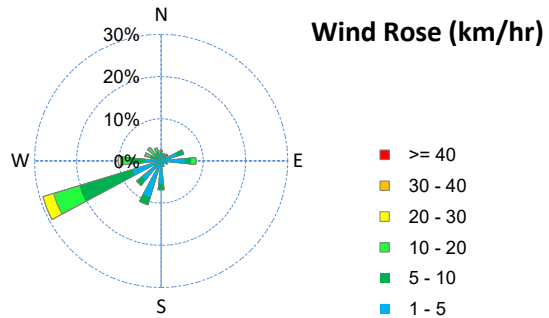
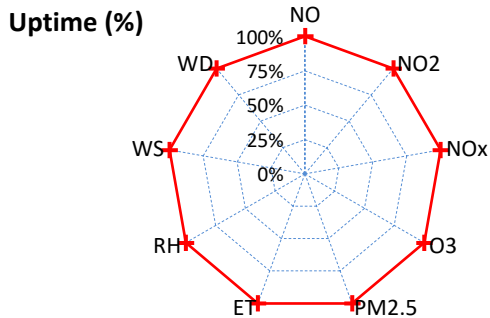
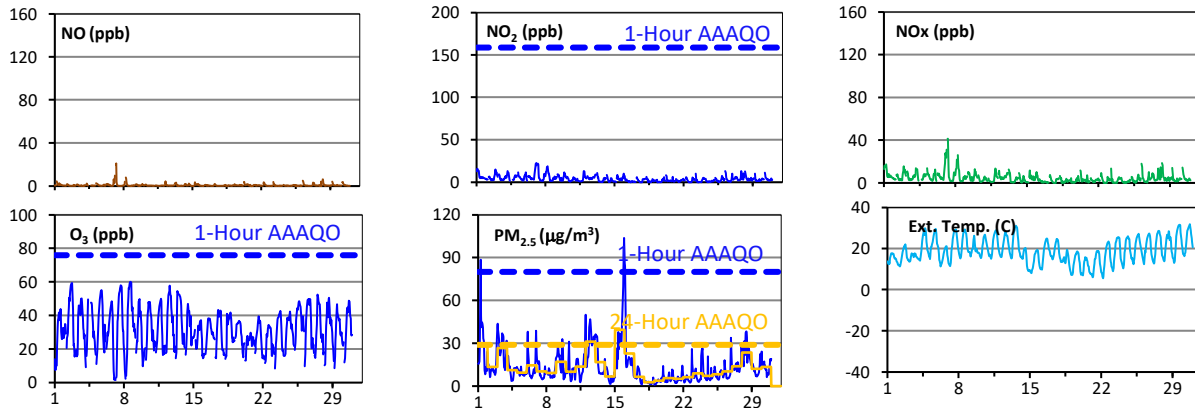
# Palliser Airshed Society - June 2023 Summary Report

## Passive Sampling Results



## Continuous Sampling Results - Taber Airpointer

Pollutants	Conc Unit	Month Records		24-Hour Records				1-Hour Records			
		Avg. Conc.	Uptime	Maximum		AAAQO Objective	Exceed No.	Maximum		AAAQO Objective	Exceed No.
				Conc	Time			Conc	Time		
NO	ppb	0.7	100.0%	3.0	Jun-7	-	-	20.9	Jun-07 7:00	-	-
NO <sub>2</sub>	ppb	3.8	100.0%	8.5	Jun-7	-	-	22.4	Jun-07 2:00	159	0
NO <sub>x</sub>	ppb	4.4	100.0%	11.5	Jun-7	-	-	41.5	Jun-07 6:00	-	-
O <sub>3</sub>	ppb	32	100.0%	40	Jun-2	-	-	60	Jun-08 16:00	76	0
PM <sub>2.5</sub>	ug/m3	14	100.0%	39	Jun-15	29	2	104	Jun-15 23:00	80	6

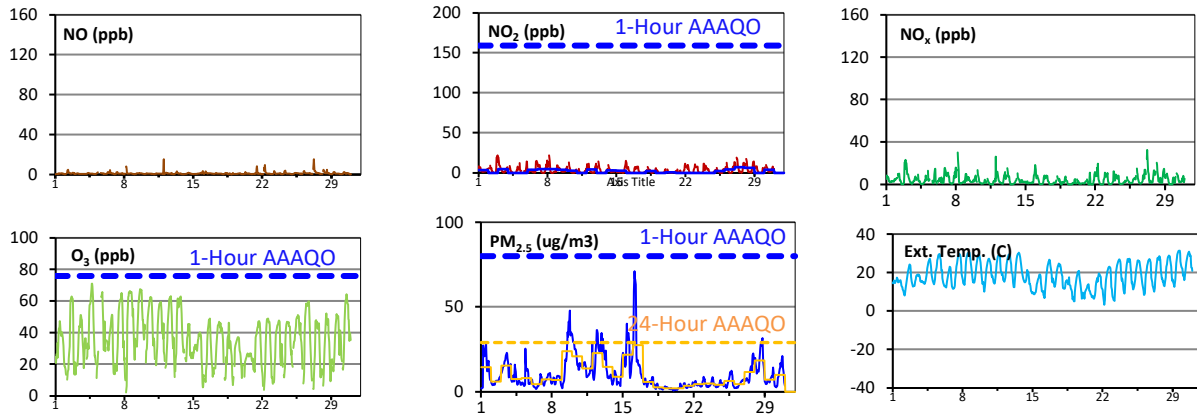


# Palliser Airshed Society - June 2023 Summary Report

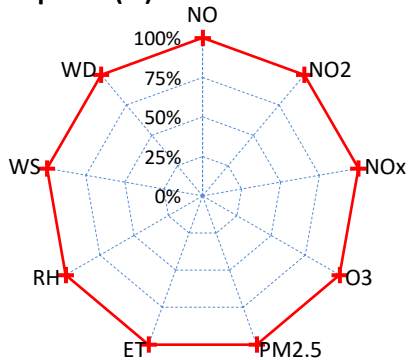
## Continuous Sampling Results - Brooks

Pollutants		Month Records		24-Hour Records				1-Hour Records			
Name	Conc Unit	Avg. Conc.	Uptime	Maximum		AAAQO Objective	Exceed No.	Maximum		AAAQO Objective	Exceed No.
				Conc	Time			Conc	Time		
NO	ppb	1.0	100.0%	2.4	Jun-27	-	-	15.4	Jun-12 1:00	-	-
NO <sub>2</sub>	ppb	3.3	100.0%	7.1	Jun-27	-	-	22.1	Jun-08 5:00	159	0
NO <sub>x</sub>	ppb	4.1	100.0%	9.4	Jun-27	-	-	32.6	Jun-27 6:00	-	-
O <sub>3</sub>	ppb	36	100.0%	49	Jun-9	-	-	71	Jun-04 17:00	76	0
PM <sub>2.5</sub>	ug/m3	10	100.0%	27	Jun-16	29	0	71	Jun-16 4:00	80	0

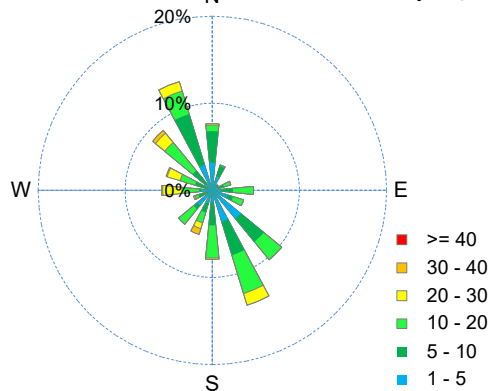
\* Dotted lines are for AAAQO limits and solid lines are for averages.



### Instrument Uptime (%)



### Wind Rose (km/hr)



## Monthly Update

\*All data has been validated; data may change after validation process.

\*The measured ambient concentrations of all parameters are within the AAAQO with the exception of two 24-hour and six 1-hour PM 2.5 exceedances recorded at Taber.

\*All PM<sub>2.5</sub> exceedances attributed to wildfire smoke in the area.

\*All compliance parameters at Crescent Heights, Taber and Brooks had > 90% operational uptime with the exception of WS/WD at Crescent Heights.