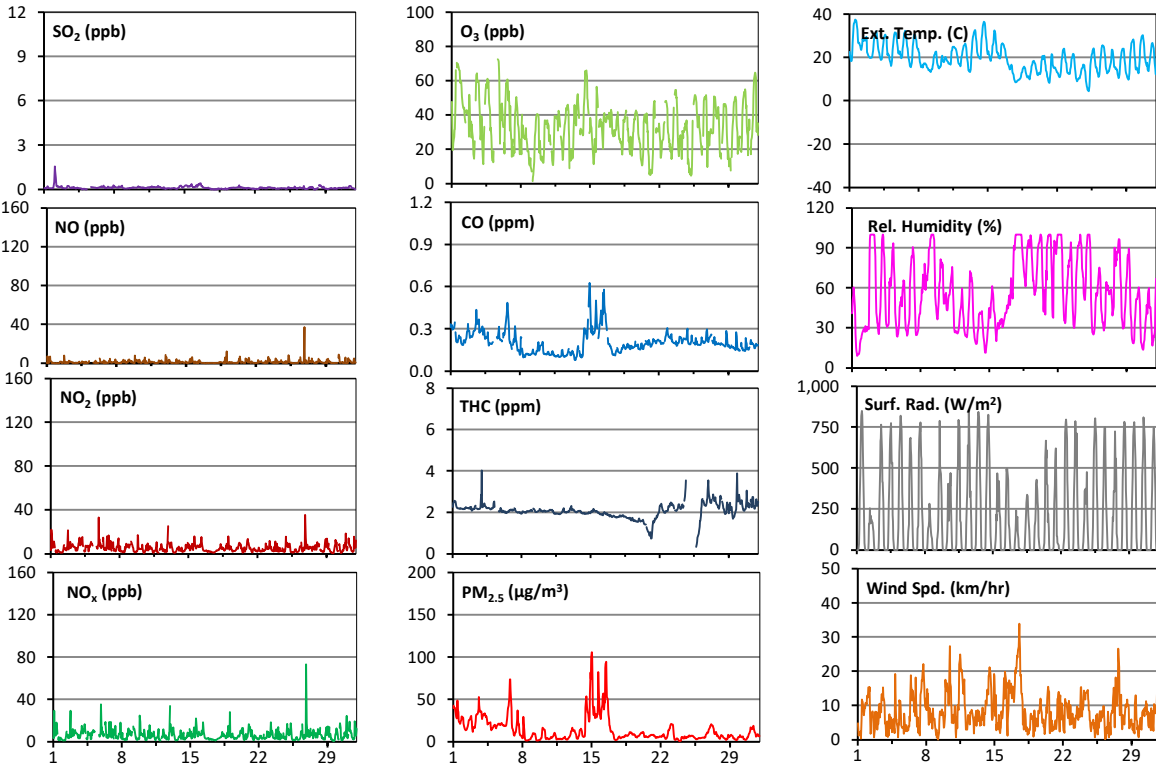
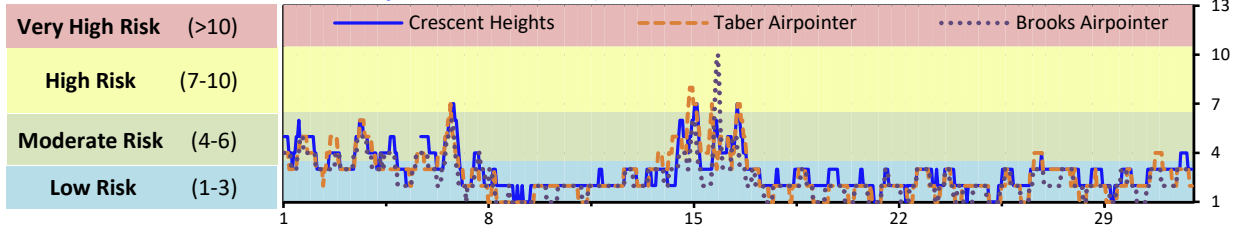


Palliser Airshed Society - August 2021 Summary Report

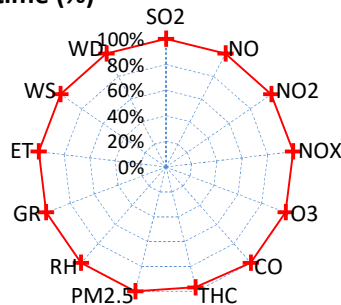
Continuous Sampling Results - Crescent Heights Station

Pollutants		Month Records		24-Hour Records				1-Hour Records			
Name	Conc Unit	Avg. Conc.	Uptime	Maximum		AAAQO Objective	Exceed No.	Maximum		AAAQO Objective	Exceed No.
				Conc	Time			Conc	Time		
SO ₂	ppb	< 1	100.0%	< 1	Aug-2	48	0	1.6	Aug-02 3:00	172	0
NO	ppb	1.0	100.0%	2.7	Aug-26	-	-	37.3	Aug-26 21:00	-	-
NO ₂	ppb	5.2	100.0%	7.2	Aug-6	-	-	35.5	Aug-26 21:00	159	0
NO _x	ppb	6.2	100.0%	8.9	Aug-26	-	-	73.1	Aug-26 21:00	-	-
O ₃	ppb	33	100.0%	51	Aug-1	-	-	73	Aug-05 17:00	76	0
CO	ppm	0.2	100.0%	0.4	Aug-16	-	-	0.6	Aug-15 1:00	13	0
THC	ppm	2.1	96.8%	2.5	Aug-27	-	-	4.0	Aug-04 0:00	-	-
PM _{2.5}	µg/m ³	14	100.0%	45	Aug-16	29	6	106	Aug-15 1:00	80	8

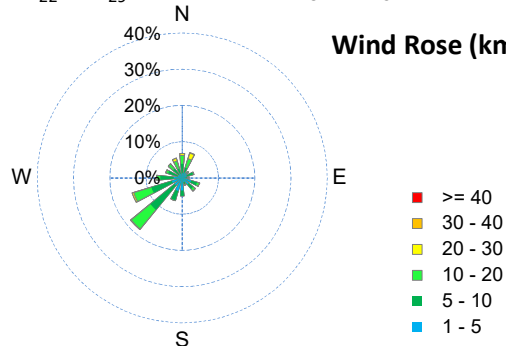
Air Quality Health Index (AQHI)



Instrument Uptime (%)

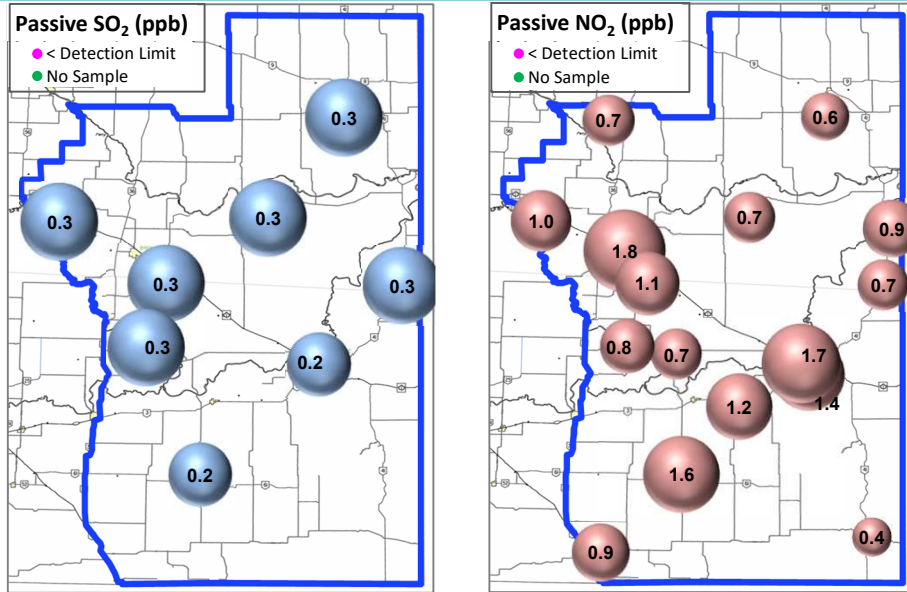


Wind Rose (km/hr)



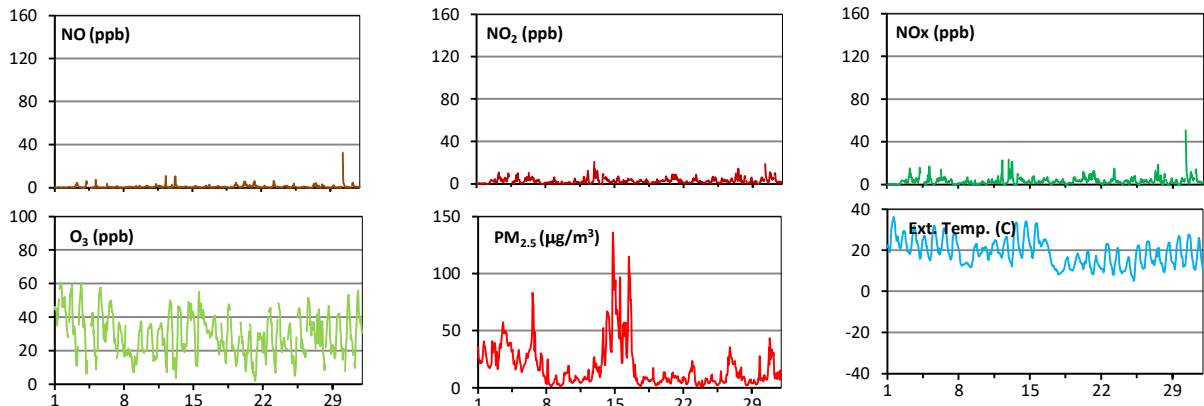
Palliser Airshed Society - August 2021 Summary Report

Passive Sampling Results

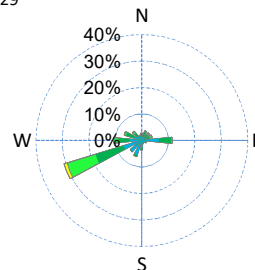
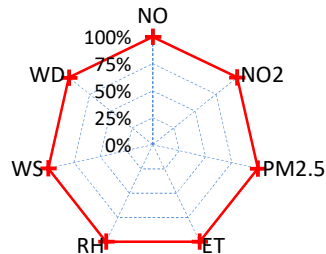


Continuous Sampling Results - Taber Airpointer

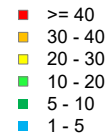
Pollutants		Month Records		24-Hour Records				1-Hour Records			
Name	Conc Unit	Avg. Conc.	Uptime	Maximum Conc	Time	AAAQO Objective	Exceed No.	Maximum Conc	Time	AAAQO Objective	Exceed No.
NO	ppb	0.8	100.0%	2.6	Aug-30	-	-	32.5	Aug-30 7:00	-	-
NO ₂	ppb	2.6	100.0%	5.5	Aug-30	-	-	20.7	Aug-12 23:00	159	0
NO _x	ppb	2.9	100.0%	8.1	Aug-30	-	-	51.1	Aug-30 7:00	-	-
O ₃	ppb	30	100.0%	49	Aug-1	-	-	61	Aug-01 16:00	76	0
PM _{2.5}	ug/m3	19	100.0%	63	Aug-14	29	6	136	Aug-14 20:00	80	16



Uptime (%)



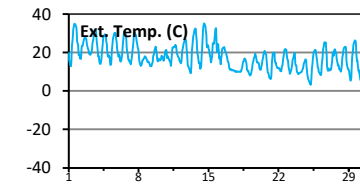
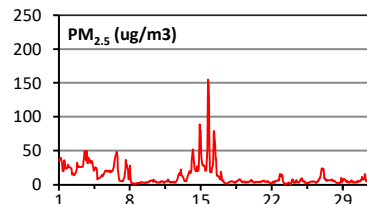
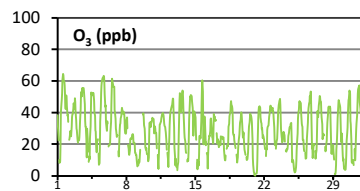
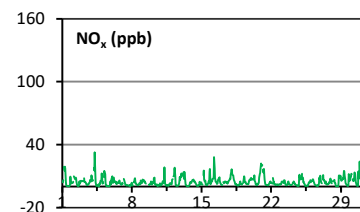
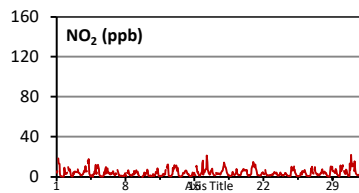
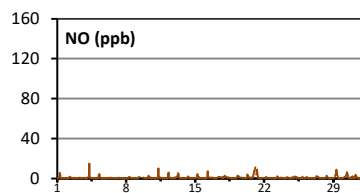
Wind Rose (km/hr)



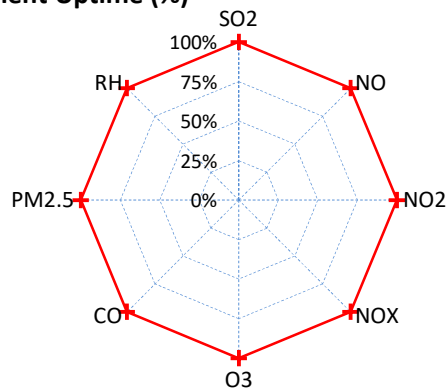
Palliser Airshed Society - August 2021 Summary Report

Continuous Sampling Results - Brooks

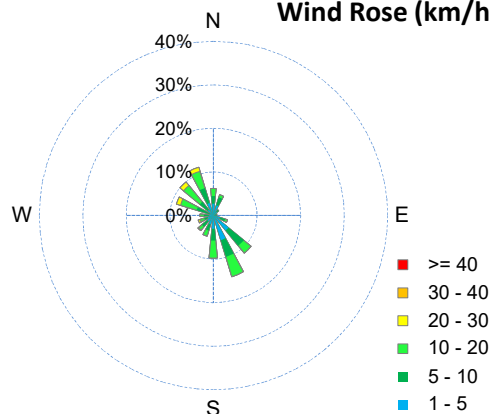
Pollutants		Month Records		24-Hour Records				1-Hour Records			
Name	Conc Unit	Avg. Conc.	Uptime	Maximum		AAAQO Objective	Exceed No.	Maximum		AAAQO Objective	Exceed No.
				Conc	Time			Conc	Time		
NO	ppb	0.8	100.0%	2.5	Aug-21	-	-	15.1	Aug-04 7:00	-	-
NO ₂	ppb	3.8	100.0%	6.9	Aug-30	-	-	22.1	Aug-30 22:00	159	0
NO _x	ppb	4.6	100.0%	8.5	Aug-30	-	-	32.9	Aug-04 7:00	-	-
O ₃	ppb	29	100.0%	42	Aug-1	-	-	65	Aug-01 14:00	76	0
PM _{2.5}	ug/m3	13	100.0%	48	Aug-15	29	5	155	Aug-15 18:00	80	5



Instrument Uptime (%)



Wind Rose (km/hr)



Monthly Update

*All data has been validated; data may change after validation process.

*The measured ambient concentrations of all parameters are within the AAAQO with the exception of five 1-hour and five 24-hour PM_{2.5} exceedances at Brooks, sixteen 1-hour and six 24-hour PM_{2.5} exceedances at Taber and eight 1-hour and six 24-hour PM_{2.5} exceedances recorded at Crescent Heights.

*All compliance parameters had > 90% operational uptime.