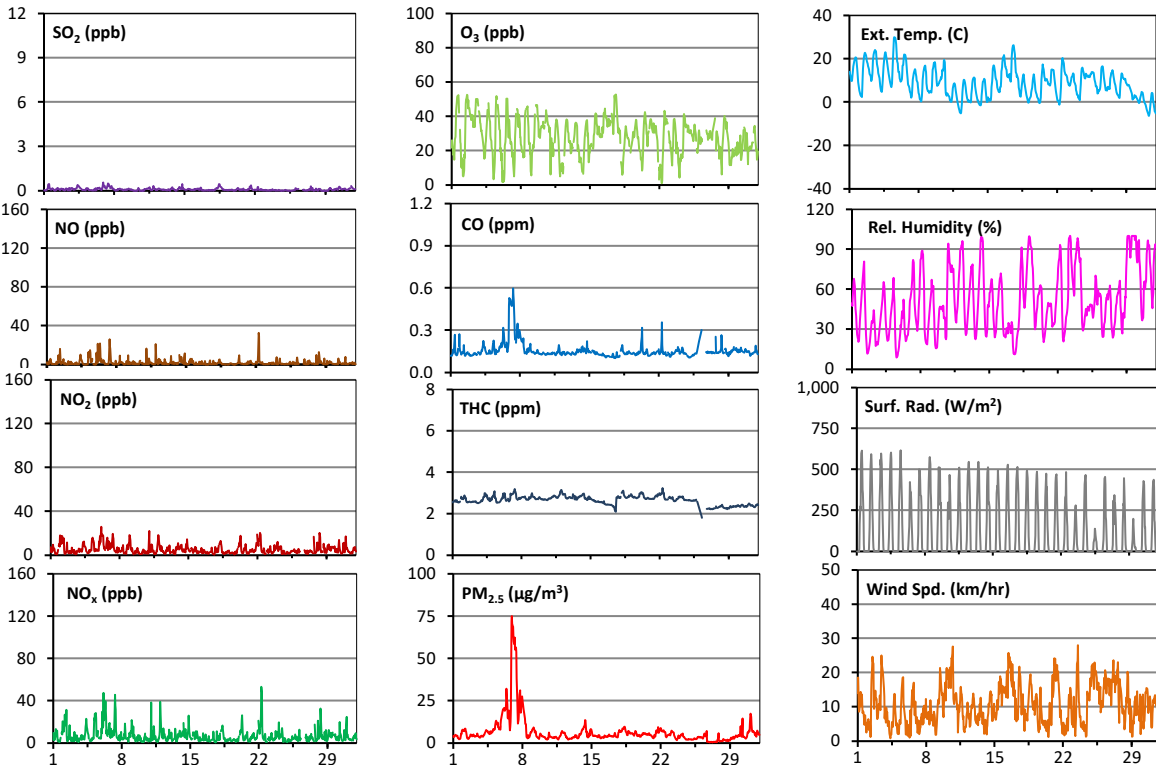
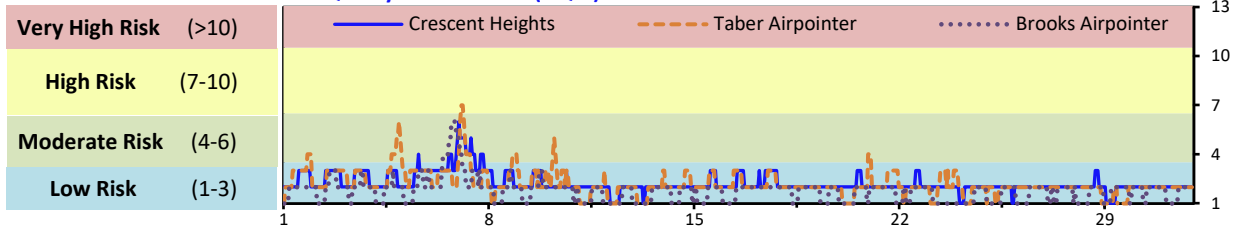


Palliser Airshed Society - October 2021 Summary Report

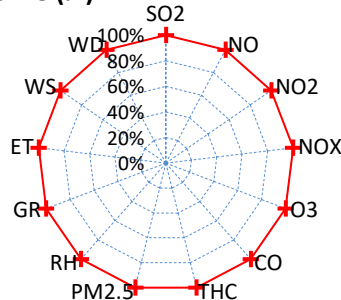
Continuous Sampling Results - Crescent Heights Station

Pollutants		Month Records		24-Hour Records				1-Hour Records			
Name	Conc Unit	Avg. Conc.	Uptime	Maximum		AAAQO Objective	Exceed No.	Maximum		AAAQO Objective	Exceed No.
				Conc	Time			Conc	Time		
SO ₂	ppb	< 1	100.0%	< 1	Oct-7	48	0	1.0	Oct-06 22:00	172	0
NO	ppb	1.8	100.0%	5.9	Oct-6	-	-	32.8	Oct-22 7:00	-	-
NO ₂	ppb	5.1	100.0%	12.0	Oct-6	-	-	25.8	Oct-06 4:00	159	0
NO _x	ppb	6.8	100.0%	17.9	Oct-6	-	-	53.2	Oct-22 7:00	-	-
O ₃	ppb	28	100.0%	41	Oct-3	-	-	53	Oct-17 15:00	76	10
CO	ppm	0.2	100.0%	0.4	Oct-7	-	-	0.6	Oct-07 8:00	13	0
THC	ppm	2.6	100.0%	2.9	Oct-18	-	-	3.2	Oct-22 8:00	-	-
PM _{2.5}	µg/m ³	7	100.0%	38	Oct-7	29	1	75	Oct-06 23:00	80	0

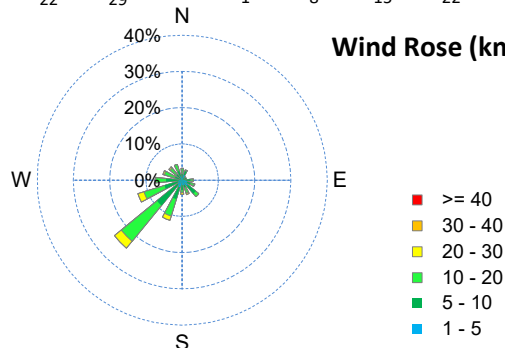
Air Quality Health Index (AQHI)



Instrument Uptime (%)

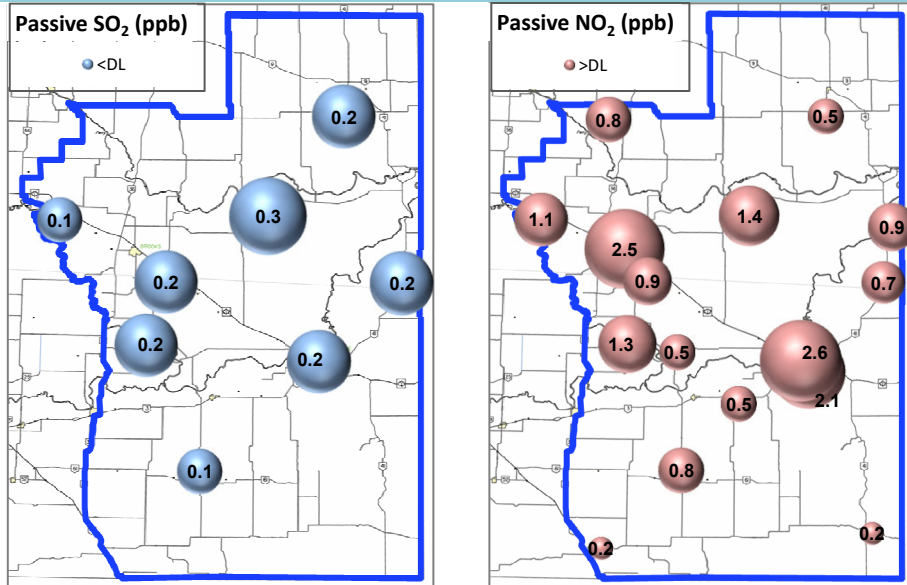


Wind Rose (km/hr)



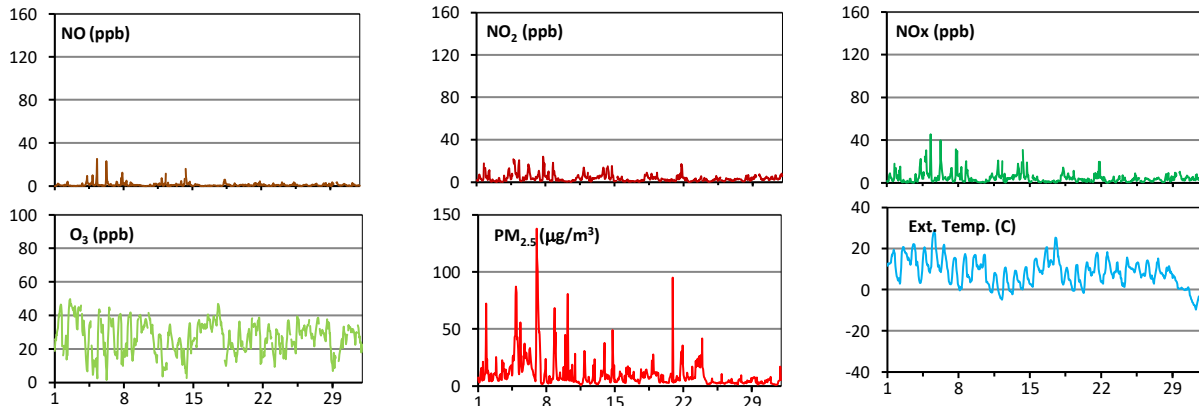
Palliser Airshed Society - October 2021 Summary Report

Passive Sampling Results

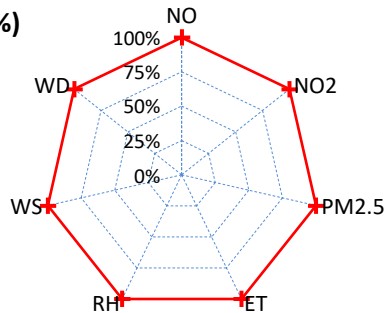


Continuous Sampling Results - Taber Airpointer

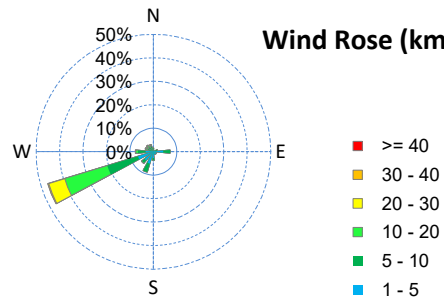
Pollutants	Conc Unit	Month Records		24-Hour Records				1-Hour Records			
		Avg. Conc.	Uptime	Maximum		AAAQO Objective	Exceed No.	Maximum		AAAQO Objective	Exceed No.
				Conc	Time			Conc	Time		
NO	ppb	1.0	100.0%	2.6	Oct-14	-	-	25.1	Oct-05 8:00	-	-
NO ₂	ppb	3.5	100.0%	9	Oct-4	-	-	24.0	Oct-07 19:00	159	0
NO _x	ppb	2.9	100.0%	11.5	Oct-4	-	-	45.7	Oct-05 8:00	-	-
O ₃	ppb	27	100.0%	39	Oct-3	-	-	50	Oct-02 14:00	76	0
PM _{2.5}	ug/m3	11	100.0%	33	Oct-7	29	1	138	Oct-07 1:00	80	8



Uptime (%)



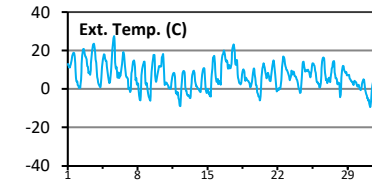
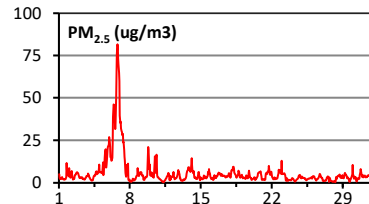
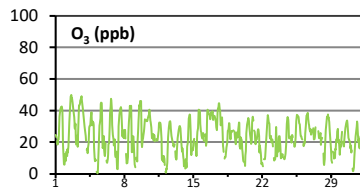
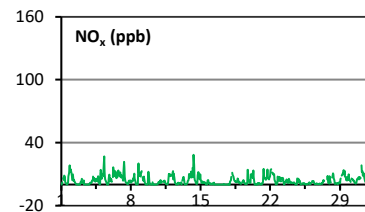
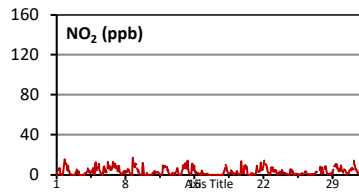
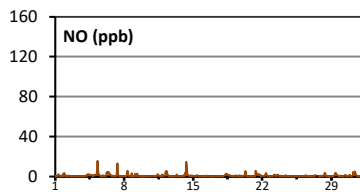
Wind Rose (km/hr)



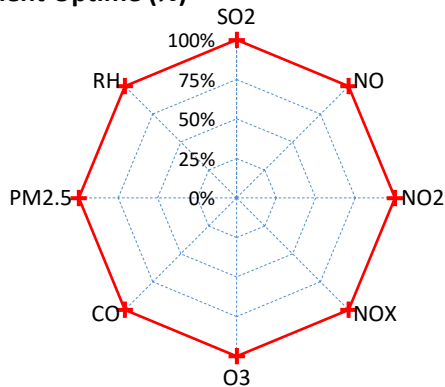
Palliser Airshed Society - October 2021 Summary Report

Continuous Sampling Results - Brooks

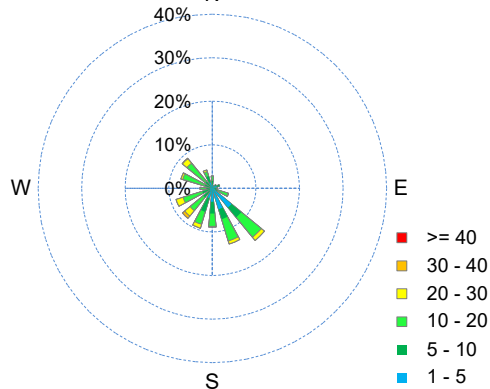
Pollutants		Month Records		24-Hour Records				1-Hour Records			
Name	Conc Unit	Avg. Conc.	Uptime	Maximum		AAAQO Objective	Exceed No.	Maximum		AAAQO Objective	Exceed No.
				Conc	Time			Conc	Time		
NO	ppb	0.7	100.0%	2.1	Oct-5	-	-	15.8	Oct-05 8:00	-	-
NO ₂	ppb	3.1	100.0%	7.4	Oct-6	-	-	17.1	Oct-08 19:00	159	0
NO _x	ppb	3.9	100.0%	9.0	Oct-6	-	-	28.4	Oct-14 8:00	-	-
O ₃	ppb	24	100.0%	36	Oct-3	-	-	50	Oct-02 15:00	76	0
PM _{2.5}	ug/m3	6	100.0%	43	Oct-6	29	1	82	Oct-06 19:00	80	1



Instrument Uptime (%)



Wind Rose (km/hr)



Monthly Update

*All data has been validated; data may change after validation process.

*The measured ambient concentrations of all parameters are within the AAAQO with the exception of one 24-hour PM2.5 exceedances recorded at Crescent Heights. Taber recorded eight 1-hour and one 24-hour PM2.5 exceedances.

Brooks recorded one 1-hour and one 24-hour PM2.5 exceedance.

*All compliance parameters had > 90% operational uptime.