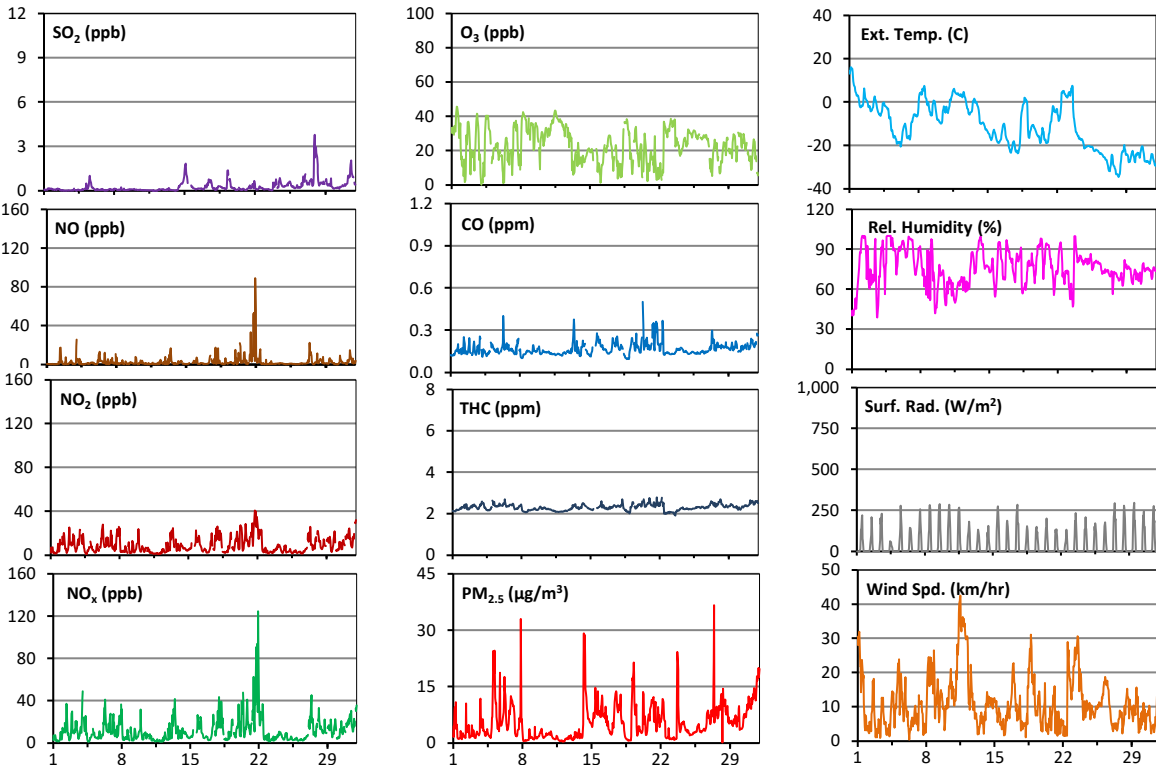
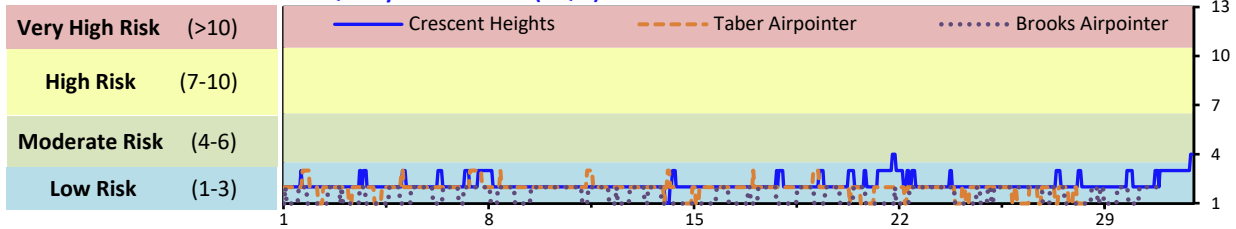


# Palliser Airshed Society - December 2021 Summary Report

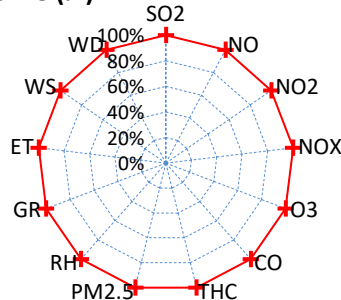
## Continuous Sampling Results - Crescent Heights Station

Pollutants		Month Records		24-Hour Records				1-Hour Records			
Name	Conc Unit	Avg. Conc.	Uptime	Maximum		AAAQO Objective	Exceed No.	Maximum		AAAQO Objective	Exceed No.
				Conc	Time			Conc	Time		
SO <sub>2</sub>	ppb	< 1	100.0%	1	Dec-28	48	0	4.0	Dec-27 23:00	172	0
NO	ppb	2.7	100.0%	19.6	Dec-21	-	-	89.2	Dec-21 23:00	-	-
NO <sub>2</sub>	ppb	8.9	100.0%	22.4	Dec-21	-	-	40.8	Dec-21 18:00	159	0
NO <sub>x</sub>	ppb	11.6	100.0%	42.1	Dec-21	-	-	124.6	Dec-21 23:00	-	-
O <sub>3</sub>	ppb	23	100.0%	38	Dec-11	-	-	46	Dec-01 13:00	76	10
CO	ppm	0.2	100.0%	0.2	Dec-21	-	-	0.5	Dec-20 10:00	13	0
THC	ppm	2.3	100.0%	2.5	Dec-31	-	-	2.8	Dec-21 18:00	-	-
PM <sub>2.5</sub>	µg/m <sup>3</sup>	5	100.0%	14	Dec-31	29	0	37	Dec-27 10:00	80	0

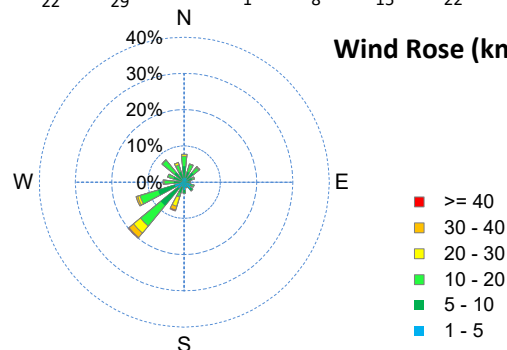
### Air Quality Health Index (AQHI)



### Instrument Uptime (%)

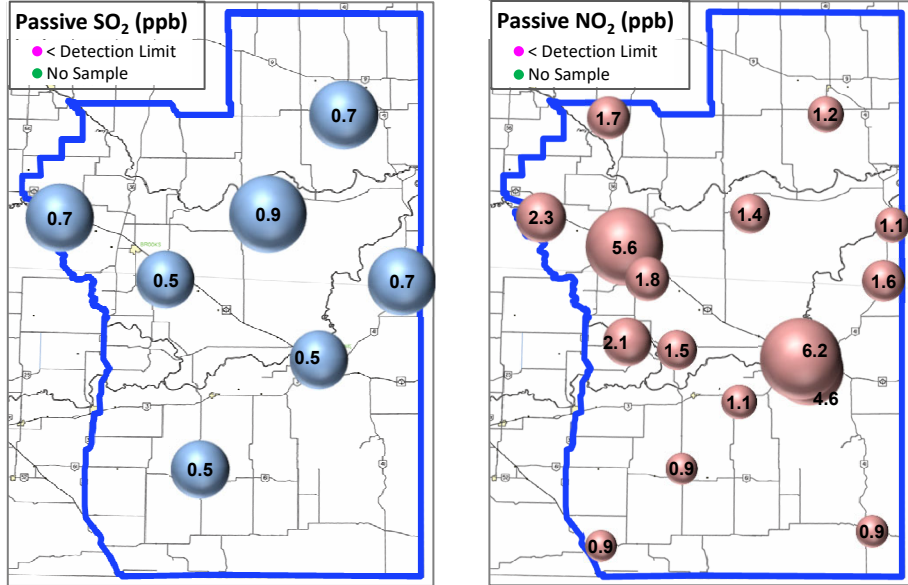


### Wind Rose (km/hr)



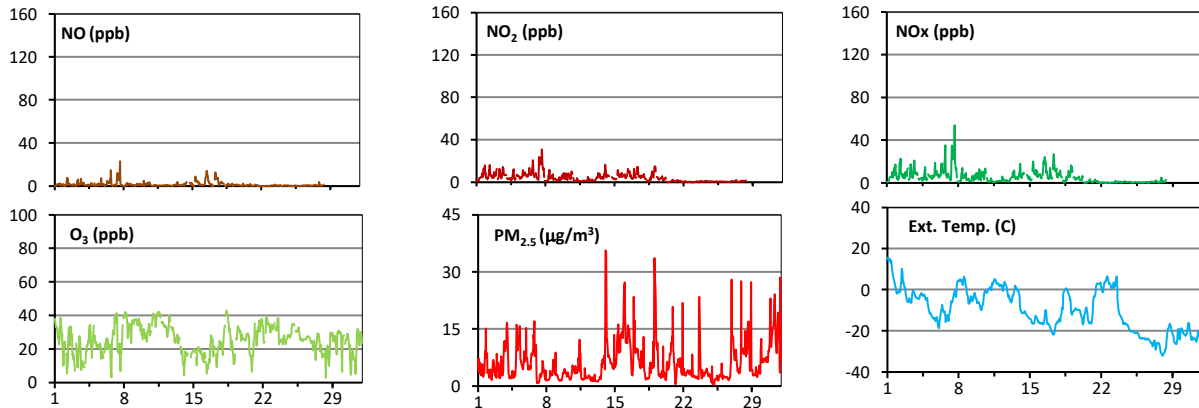
# Palliser Airshed Society - December 2021 Summary Report

## Passive Sampling Results

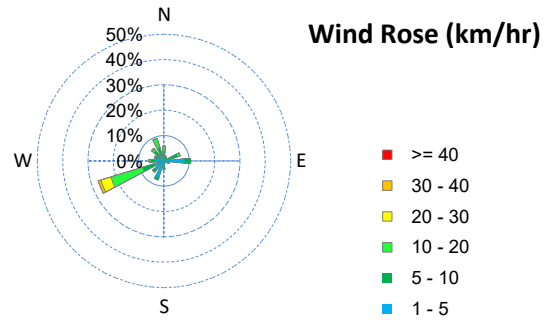
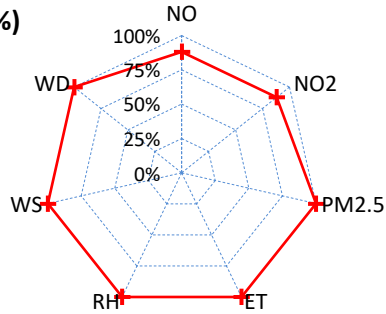


## Continuous Sampling Results - Taber Airpointer

Pollutants	Conc Unit	Month Records		24-Hour Records				1-Hour Records			
		Avg. Conc.	Uptime	Maximum		AAAQO Objective	Exceed No.	Maximum		AAAQO Objective	Exceed No.
				Conc	Time			Conc	Time		
NO	ppb	1.3	88.2%	4.2	Dec-16	-	-	23.0	Dec-07 16:00	-	-
NO <sub>2</sub>	ppb	3.9	88.2%	11.6	Dec-7	-	-	31.0	Dec-07 16:00	159	0
NO <sub>x</sub>	ppb	5.2	88.2%	15.6	Dec-7	-	-	54.0	Dec-07 16:00	-	-
O <sub>3</sub>	ppb	25	100.0%	39	Dec-11	-	-	43	Dec-18 9:00	76	0
PM <sub>2.5</sub>	ug/m3	6	100.0%	14	Dec-31	29	0	36	Dec-14 2:00	80	0



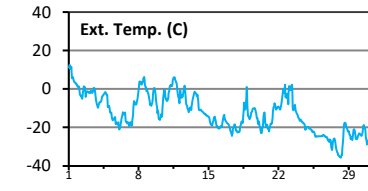
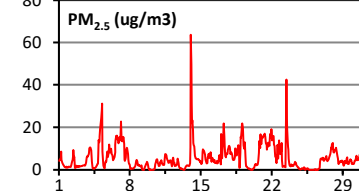
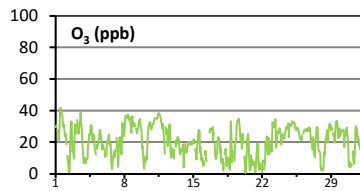
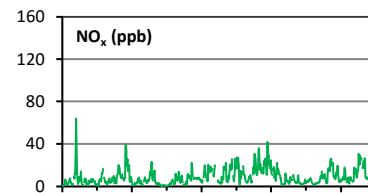
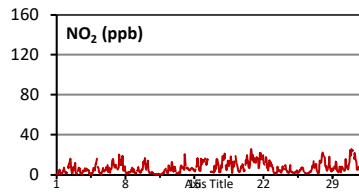
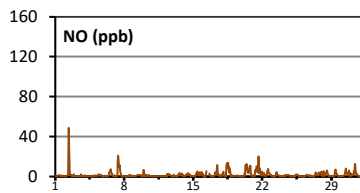
Uptime (%)



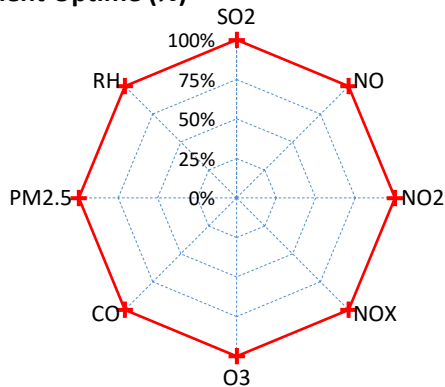
# Palliser Airshed Society - December 2021 Summary Report

## Continuous Sampling Results - Brooks

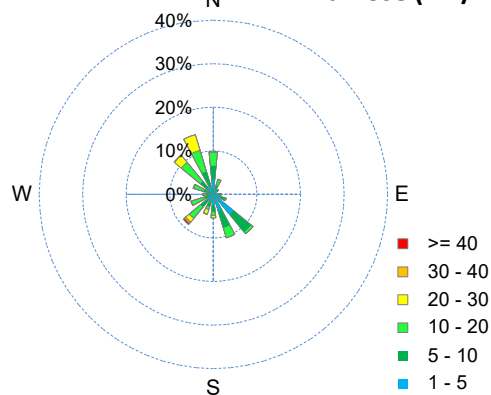
Pollutants		Month Records		24-Hour Records				1-Hour Records			
Name	Conc Unit	Avg. Conc.	Uptime	Maximum		AAAQO Objective	Exceed No.	Maximum		AAAQO Objective	Exceed No.
				Conc	Time			Conc	Time		
NO	ppb	1.7	100.0%	5.5	Dec-2	-	-	48.8	Dec-02 10:00	-	-
NO <sub>2</sub>	ppb	7.0	100.0%	15.1	Dec-21	-	-	25.9	Dec-20 19:00	159	0
NO <sub>x</sub>	ppb	8.7	100.0%	20.0	Dec-21	-	-	64.0	Dec-02 10:00	-	-
O <sub>3</sub>	ppb	21	100.0%	34	Dec-11	-	-	42	Dec-01 13:00	76	0
PM <sub>2.5</sub>	ug/m3	6	100.0%	18	Dec-31	29	0	64	Dec-14 1:00	80	0



Instrument Uptime (%)



Wind Rose (km/hr)



## Monthly Update

\*All data has been validated; data may change after validation process.

\*The measured ambient concentrations of all parameters are within the AAAQO.

\*All compliance parameters at Crescent Heights and Brooks had > 90% operational uptime.

\*All compliance parameters at the Taber Airpointer with the exception of NO, NO<sub>2</sub> and NO<sub>x</sub> had > 90% operational uptime.