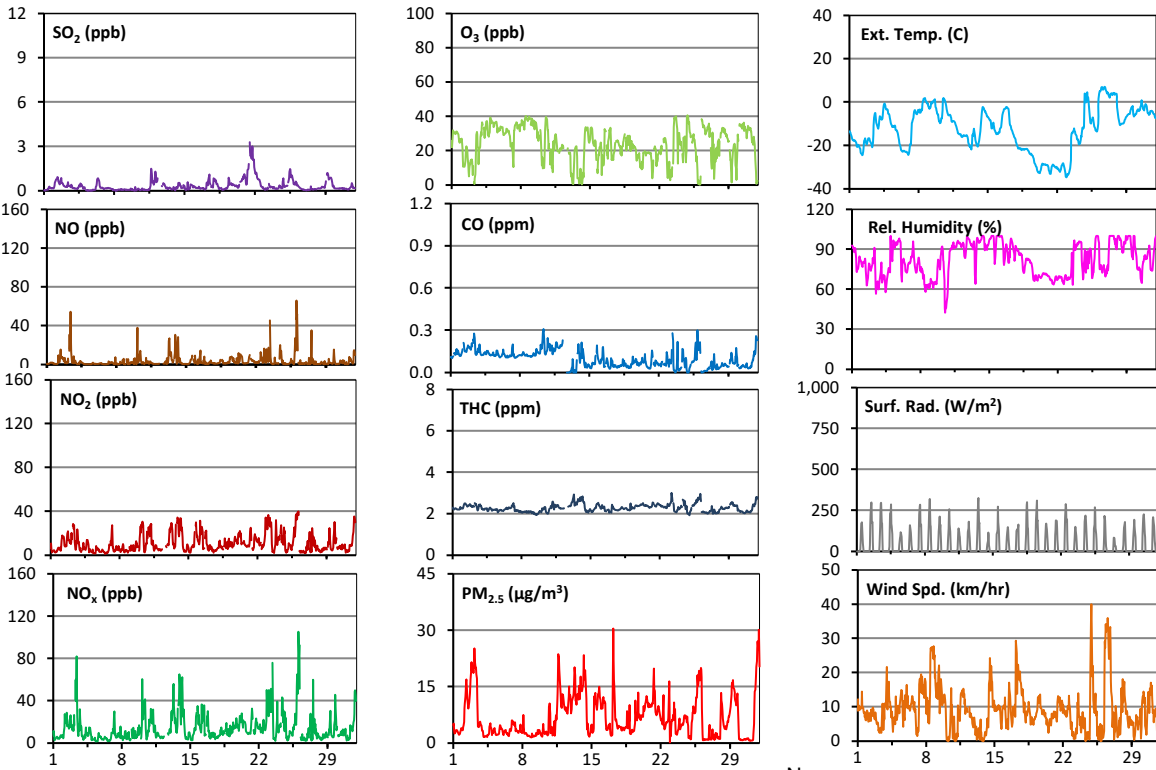
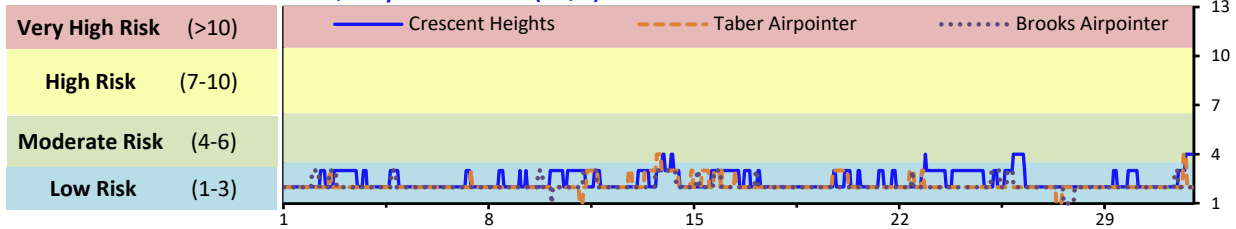


# Palliser Airshed Society - December 2022 Summary Report

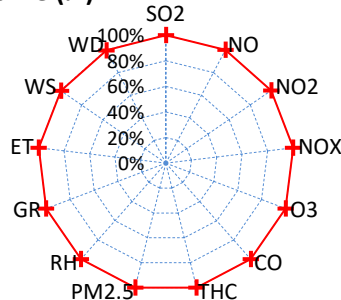
## Continuous Sampling Results - Crescent Heights Station

Pollutants	Month Records			24-Hour Records				1-Hour Records				
	Name	Conc Unit	Avg. Conc.	Uptime	Maximum		AAAQO Objective	Exceed No.	Maximum		AAAQO Objective	Exceed No.
					Conc	Time			Conc	Time		
SO <sub>2</sub>	ppb	< 1	100.0%	2	Dec-21	48	0	3.0	Dec-21 12:00	172	0	
NO	ppb	3.4	100.0%	10.3	Dec-13	-	-	65.9	Dec-26 2:00	-	-	
NO <sub>2</sub>	ppb	10.7	100.0%	20.5	Dec-13	-	-	39.9	Dec-26 4:00	159	0	
NO <sub>x</sub>	ppb	14.0	100.0%	30.8	Dec-13	-	-	105.1	Dec-26 2:00	-	-	
O <sub>3</sub>	ppb	24	100.0%	37	Dec-8	-	-	41	Dec-24 21:00	76	0	
CO	ppm	0.1	100.0%	0.2	Dec-10	-	-	0.3	Dec-10 10:00	13	0	
THC	ppm	2.3	100.0%	2.6	Dec-13	-	-	3.0	Dec-23 6:00	-	-	
PM <sub>2.5</sub>	µg/m <sup>3</sup>	7	100.0%	14	Dec-13	29	0	30	Dec-17 5:00	80	0	

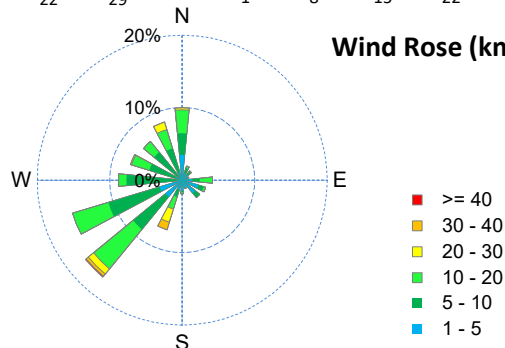
### Air Quality Health Index (AQHI)



### Instrument Uptime (%)

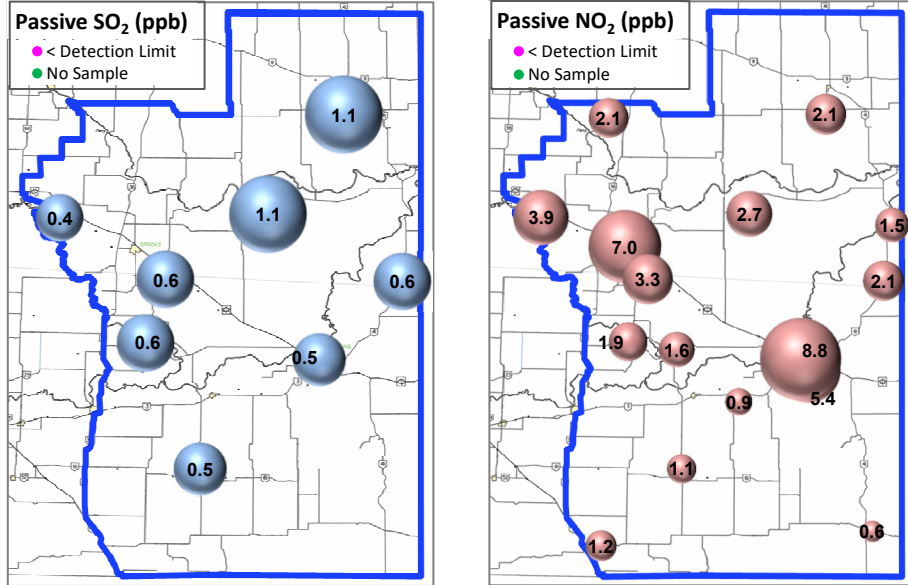


### Wind Rose (km/hr)



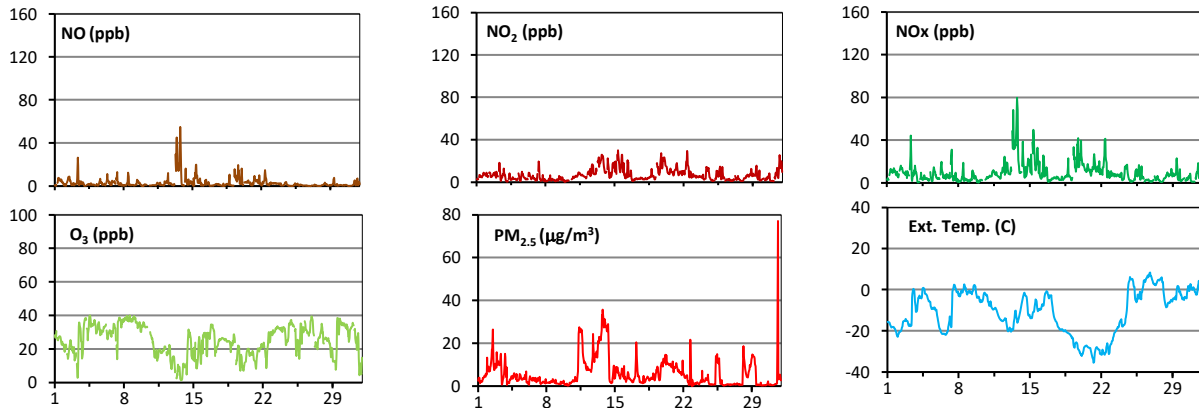
# Palliser Airshed Society - December 2022 Summary Report

## Passive Sampling Results

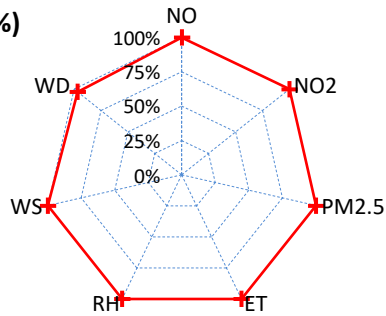


## Continuous Sampling Results - Taber Airpointer

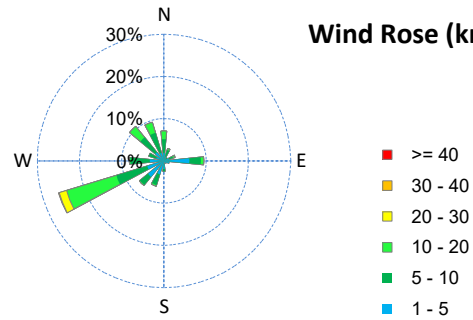
Pollutants	Conc Unit	Month Records		24-Hour Records				1-Hour Records			
		Avg. Conc.	Uptime	Maximum		AAAQO Objective	Exceed No.	Maximum		AAAQO Objective	Exceed No.
				Conc	Time			Conc	Time		
NO	ppb	2.7	100.0%	17.3	Dec-13	-	-	54.9	Dec-13 19:00	-	-
NO <sub>2</sub>	ppb	6.8	100.0%	17.4	Dec-13	-	-	30.2	Dec-15 9:00	159	0
NO <sub>x</sub>	ppb	9.5	100.0%	34.7	Dec-13	-	-	79.6	Dec-13 19:00	-	-
O <sub>3</sub>	ppb	25	100.0%	38	Dec-8	-	-	40	Dec-04 14:00	76	0
PM <sub>2.5</sub>	ug/m3	6	100.0%	23	Dec-13	29	0	77	Dec-31 17:00	80	0



### Uptime (%)



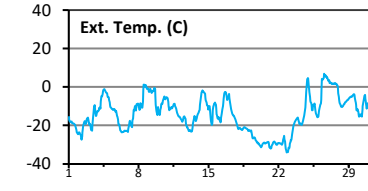
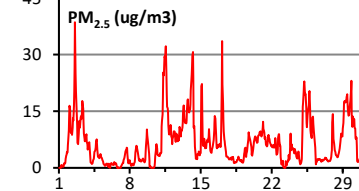
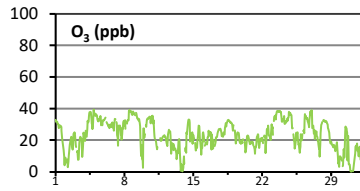
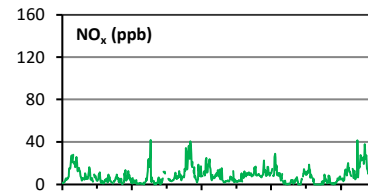
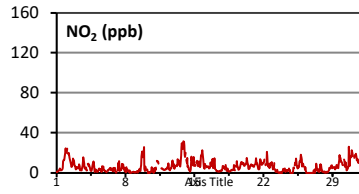
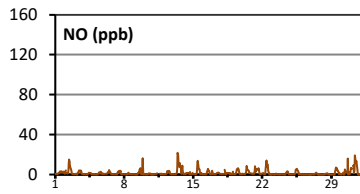
### Wind Rose (km/hr)



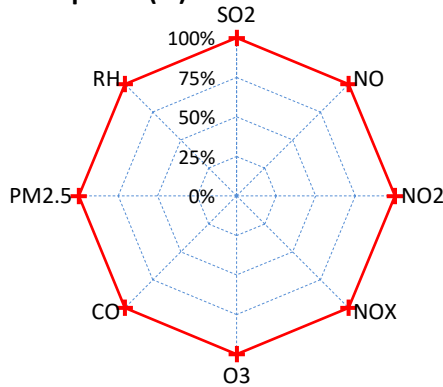
# Palliser Airshed Society - December 2022 Summary Report

## Continuous Sampling Results - Brooks

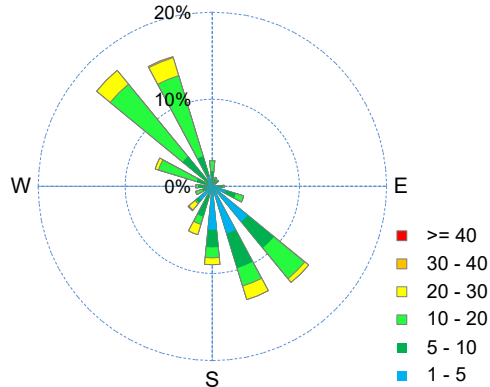
Pollutants		Month Records		24-Hour Records				1-Hour Records			
Name	Conc Unit	Avg. Conc.	Uptime	Maximum		AAAQO Objective	Exceed No.	Maximum		AAAQO Objective	Exceed No.
				Conc	Time			Conc	Time		
NO	ppb	1.6	100.0%	5.9	Dec-31	-	-	21.9	Dec-13 11:00	-	-
NO <sub>2</sub>	ppb	6.3	100.0%	15.7	Dec-13	-	-	31.7	Dec-13 22:00	159	0
NO <sub>x</sub>	ppb	7.9	100.0%	21.3	Dec-13	-	-	41.9	Dec-09 22:00	-	-
O <sub>3</sub>	ppb	24	100.0%	35	Dec-23	-	-	39	Dec-04 22:00	76	0
PM <sub>2.5</sub>	ug/m3	7	100.0%	17	Dec-11	29	0	39	Dec-02 15:00	80	0



Instrument Uptime (%)



Wind Rose (km/hr)



## Monthly Update

\*All data has been validated; data may change after validation process.

\*The measured ambient concentrations of all parameters are within the AAAQO.

\*All compliance parameters at Crescent Heights, Taber and Brooks had > 90% operational uptime.