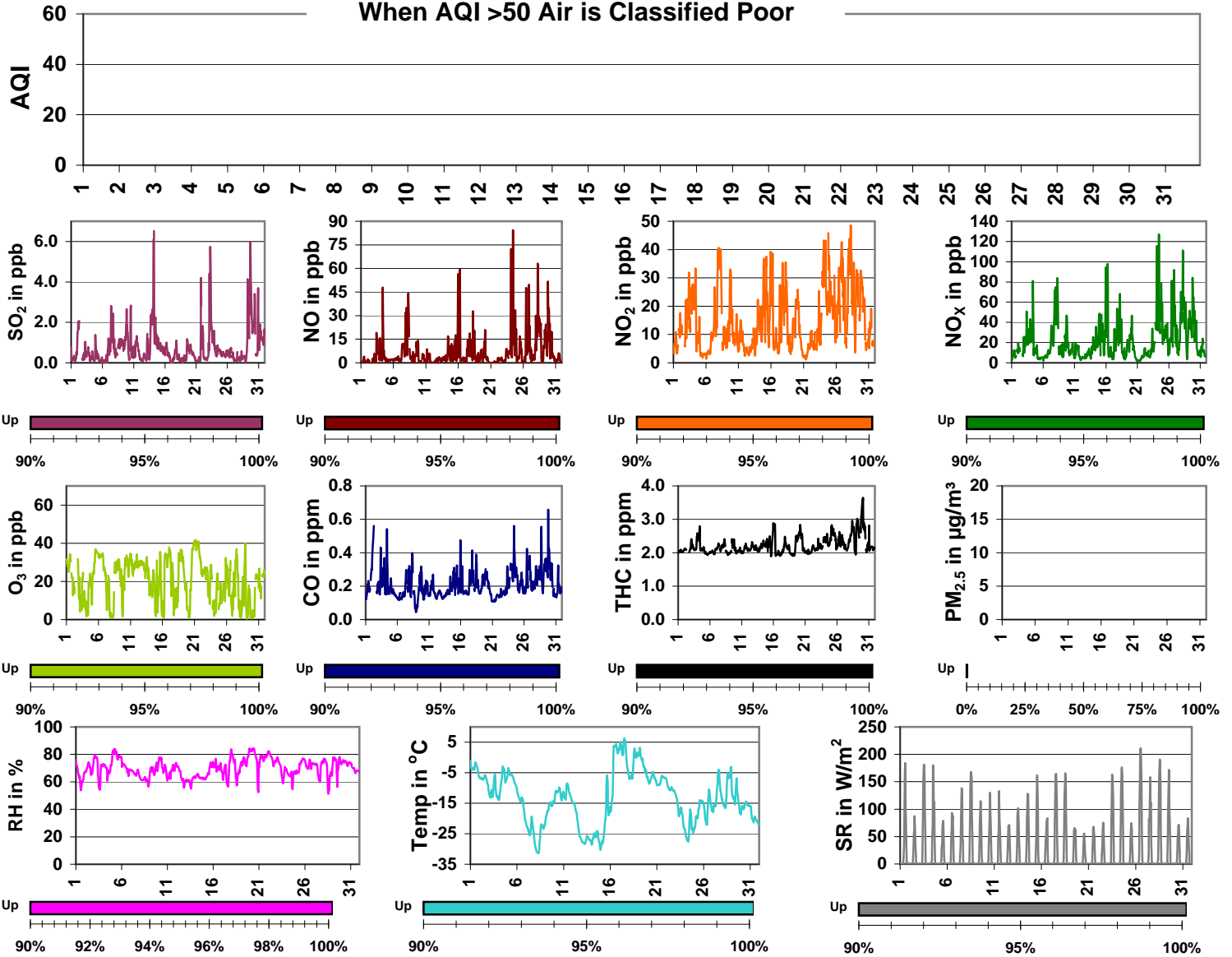


Palliser Airshed Society - December 2009 Summary Report

	Average	Uptime	1-hour			24-hour			Exceed	
			Max	Objective	Time	Max	Objective	Day	1hr	24hr
SO ₂ (ppb)	0.7	100.1%	6.5	172	Dec-14 06:00	2.6	57	Dec-29	0	0
NO (ppb)	6.7	100.1%	84.4	-	Dec-24 10:00	23.6	-	Dec-24	0	0
NO ₂ (ppb)	14.7	100.1%	48.6	212	Dec-28 06:00	31.3	106	Dec-24	0	0
NO _x (ppb)	21.3	100.1%	127.0	-	Dec-24 10:00	54.7	-	Dec-24	0	0
O ₃ (ppb)	20.7	100.1%	41.8	82	Dec-21 03:00	37.9	-	Dec-21	0	0
CO (ppm)	0.21	100.1%	0.66	13.0	Dec-29 19:00	0.35	-	Dec-29	0	0
THC (ppm)	2.22	100.1%	3.64	-	Dec-30 02:00	2.90	-	Dec-29	0	0
PM _{2.5} µg/m ³	3.5	0.3%	6.9	-	Dec-01 00:00	0.0	30	Nov-30	0	0

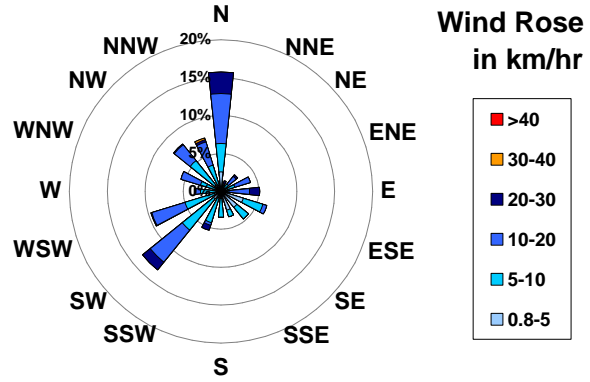
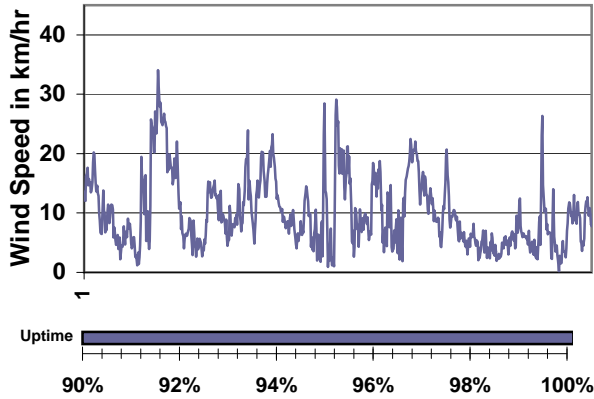
When AQI >50 Air is Classified Poor



Update Summary

- The Rover Station was up and running throughout December 2009.
- The PM_{2.5} TEOM was down for most of the month of December therefore no data was displayed and the Air Quality could not be calculated.
- PAS website changed to www.palliserairshed.com

Palliser Airshed Society - December 2009 Summary Report

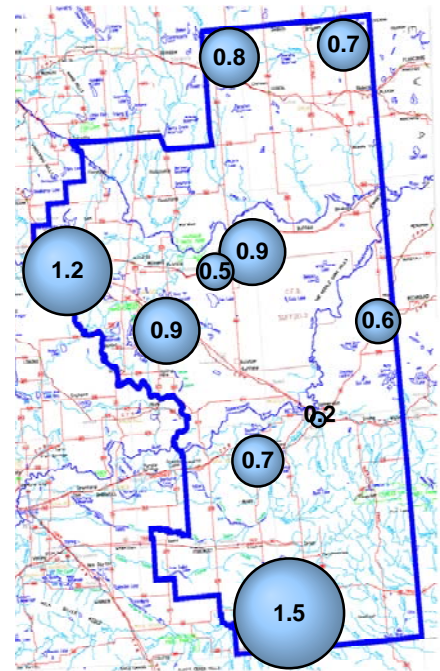
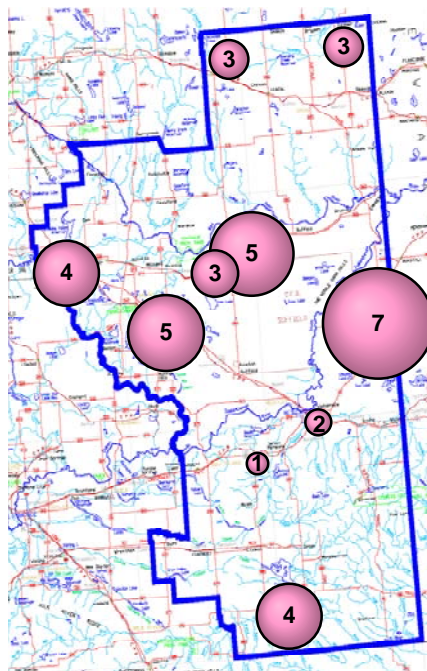
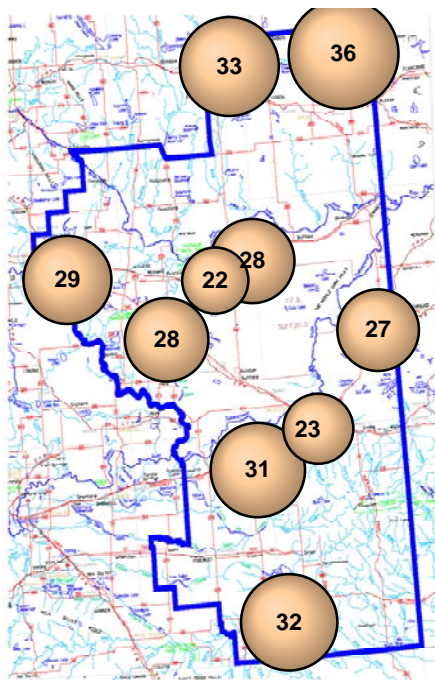


December 2009 - Passive Sampling Results throughout the PAS Zone

O₃ Passives (in ppb)

NO₂ Passives (in ppb)

SO₂ Passives (in ppb)



Portable Sampling Results throughout the PAS Zone

	Average	Uptime	1-hour			24-hour			Exceed	
			Max	Objective	Time	Max	Objective	Day	1hr	24hr
SO ₂ (ppb)	1.0	100.1%	11	172	Dec-29 22:00	6	57	Dec-29	0	0
NO ₂ (ppb)	7.5	100.1%	32	212	Dec-29 02:00	22	106	Dec-29	0	0
O ₃ (ppb)	25.9	100.1%	44	82	Dec-21 05:00	38	-	Dec-21	0	0
H ₂ S (ppb)	0.3	100.1%	2	10	Dec-25 11:00	1	3	Dec-25	0	0

