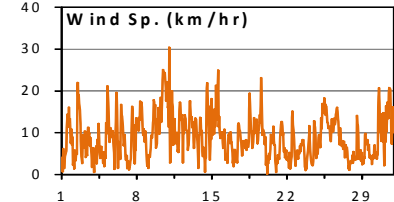
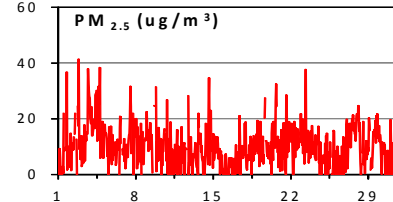
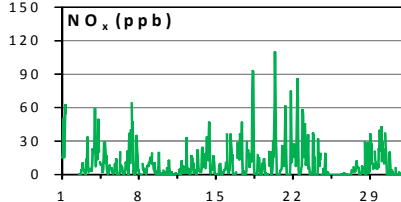
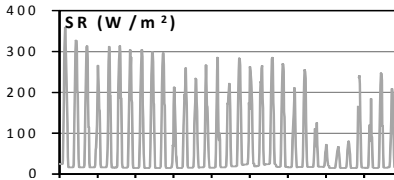
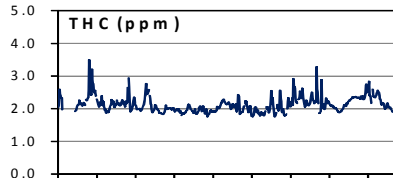
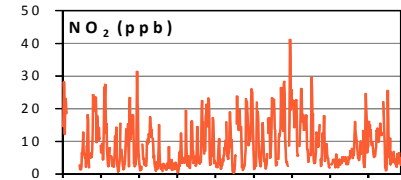
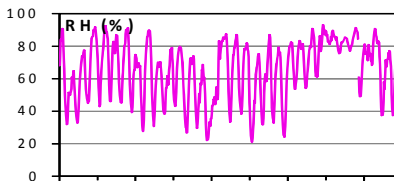
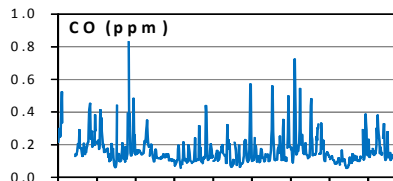
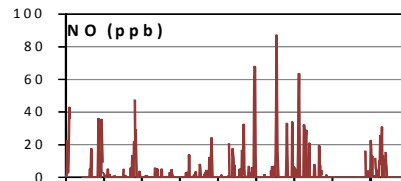
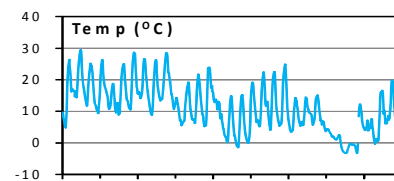
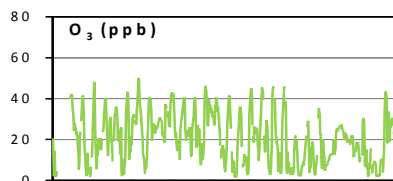
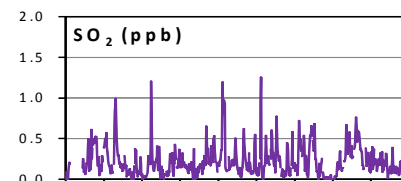
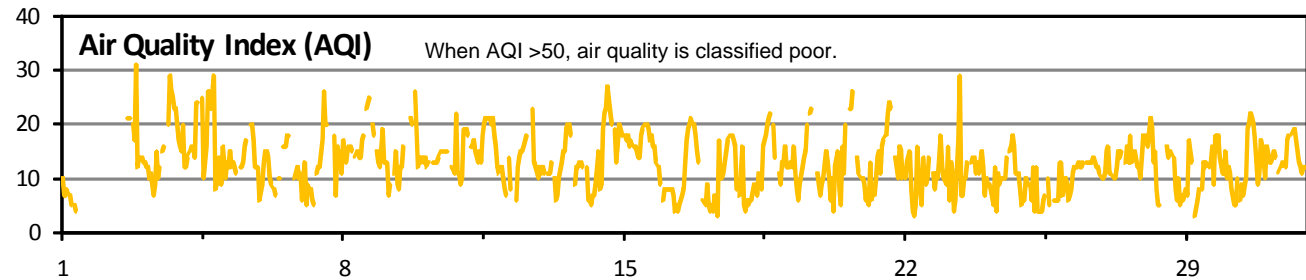


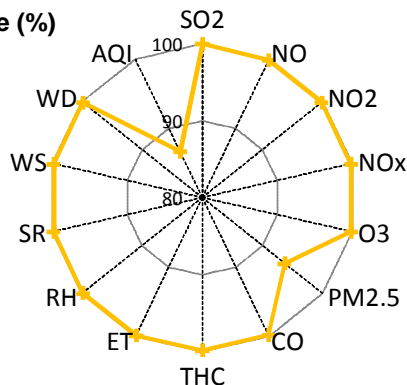
Palliser Airshed Society - October 2010 Summary Report

Continuous Sampling Results (Crescent Height Station)

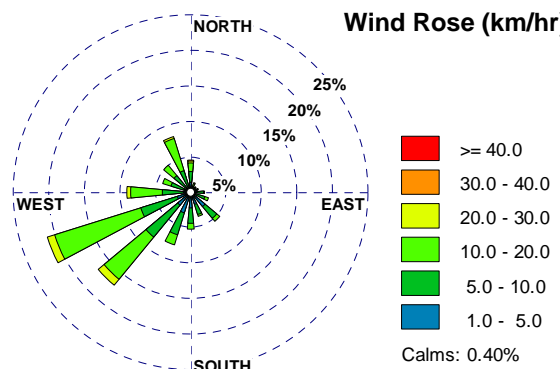
Pollutants		Month Records		24-hour Records				1-hour Records			
Name	Conc Unit	Avg. Conc	Uptime	Maximum		AAAQO Objective	Exceed Days	Maximum		AAAQO Objective	Exceed Hours
				Conc	Time			Conc	Time		
SO ₂	ppb	0.22	99.9%	0.4	Oct-27	57	0	1.3	18/10/2010 22:00	172	0
NO	ppb	3.0	99.9%	10.8	Oct-22	-	-	87.1	20/10/2010 08:00	-	-
NO ₂	ppb	8.8	99.9%	16.8	Oct-21	106	0	41.1	21/10/2010 19:00	212	0
NO _x	ppb	9.8	99.9%	25.0	Oct-22	-	-	109.8	20/10/2010 08:00	-	-
O ₃	ppb	21.1	99.9%	32.3	Oct-08	-	-	50.0	08/10/2010 15:00	82	0
CO	ppm	0.16	99.9%	0.26	Oct-22	-	-	0.8	07/10/2010 08:00	13	0
THC	ppm	2.1	99.9%	2.5	Oct-29	-	-	3.49	03/10/2010 19:00	-	-
PM _{2.5}	µg/m ³	10.1	93.7%	19.3	Oct-04	30	0	41.3	02/10/2010 20:00	-	-



Instrument Uptime (%)



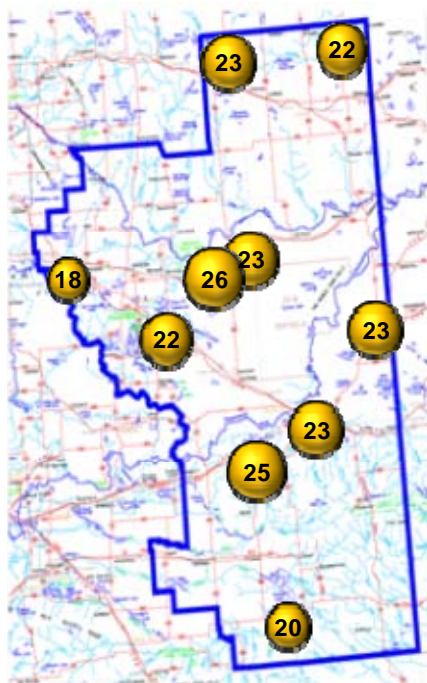
Wind Rose (km/hr)



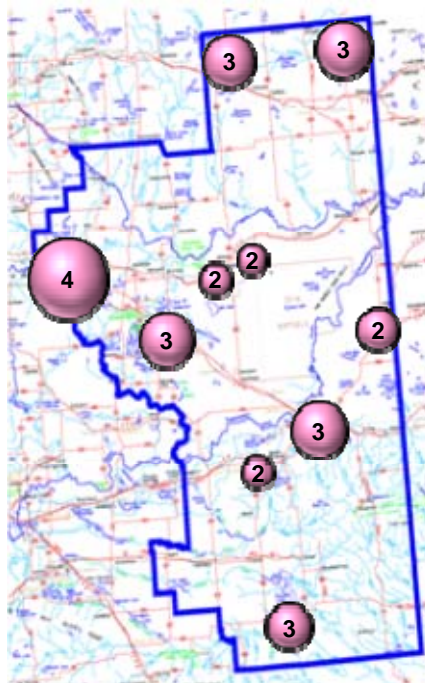
Palliser Airshed Society - October 2010 Summary Report

Passive Sampling Results

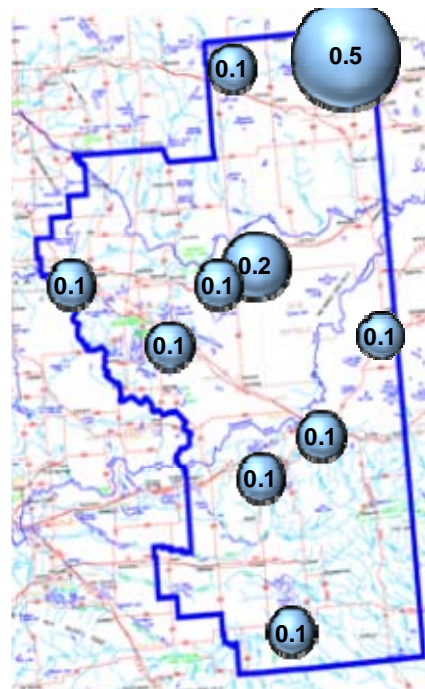
O₃ Passive (ppb)



NO₂ Passive (ppb)



SO₂ Passive (ppb)



Rover Station Sampling Results – No Data

Monthly Update

- ✚ Crescent Height station power failure for 11:00 October 28, 2010.
- ✚ Crescent Height station TEOM analyzer had 47 intermittent hours of missing data for October 2010.