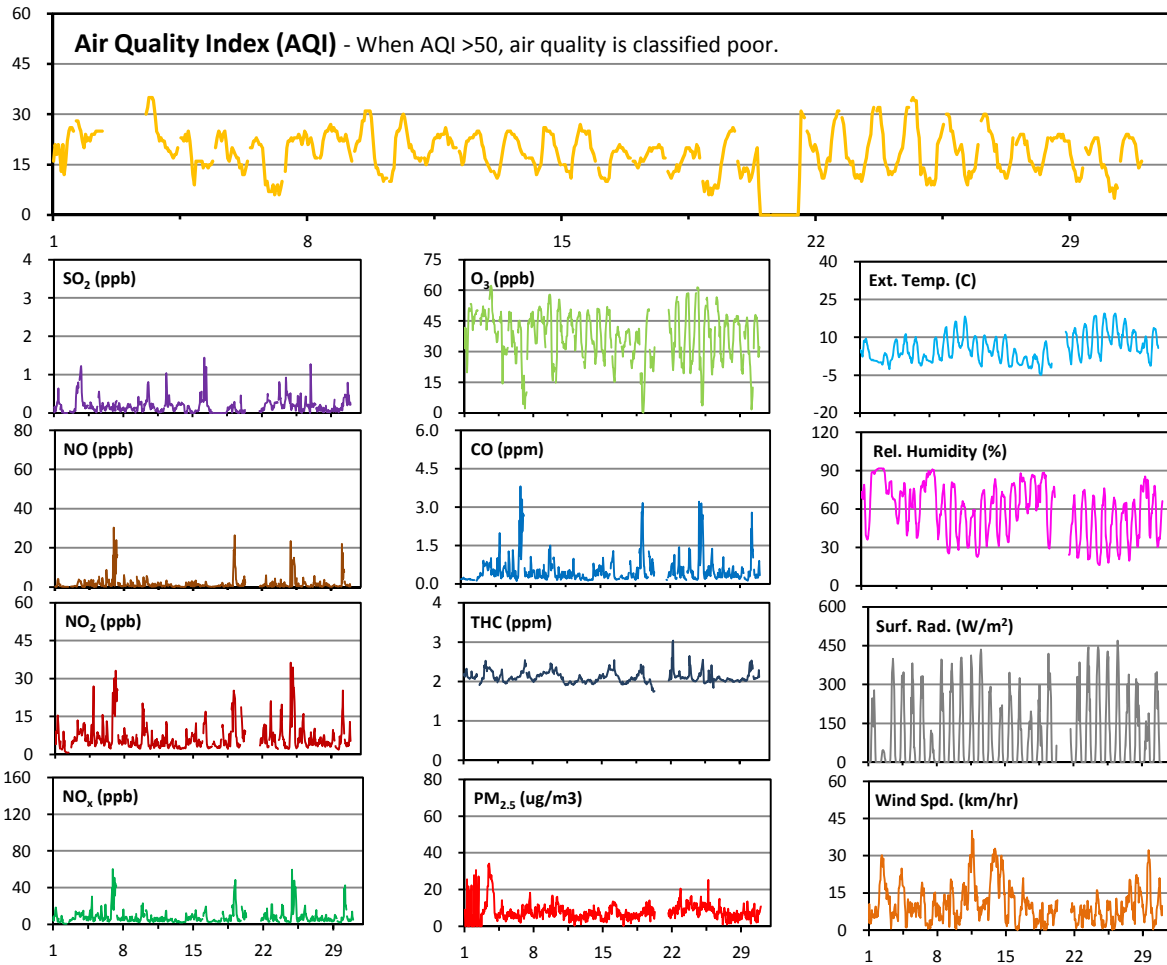


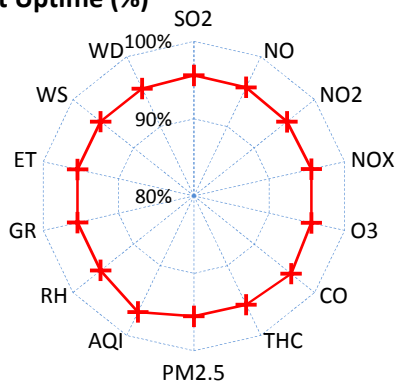
# Palliser Airshed Society - April 2011 Summary Report

## Continuous Sampling Results - Crescent Heights Station

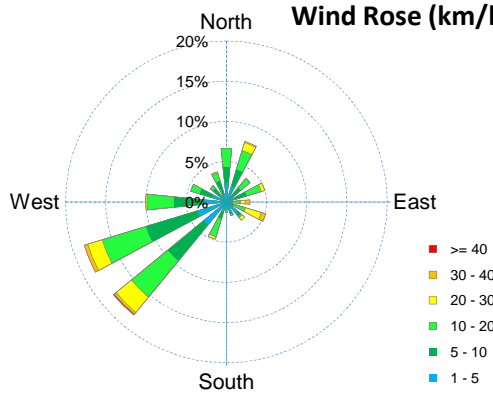
| Pollutants        | Month Records     | 24-Hour Records |           |            |        |         |      | 1-Hour Records  |              |         |      |                 |            |
|-------------------|-------------------|-----------------|-----------|------------|--------|---------|------|-----------------|--------------|---------|------|-----------------|------------|
|                   |                   | Name            | Conc Unit | Avg. Conc. | Uptime | Maximum |      | AAAQO Objective | Exceed No.   | Maximum |      | AAAQO Objective | Exceed No. |
|                   |                   |                 |           |            |        | Conc    | Time |                 |              | Conc    | Time |                 |            |
| SO <sub>2</sub>   | ppb               | 0.2             | 95.6%     | 0.6        | Apr-3  | 48      | 0    | 1.4             | Apr-16 5:00  | 172     | 0    |                 |            |
| NO                | ppb               | 2               | 95.6%     | 5          | Apr-19 | -       | -    | 30              | Apr-07 0:00  | -       | -    |                 |            |
| NO <sub>2</sub>   | ppb               | 7               | 95.4%     | 12         | Apr-25 | 106     | 0    | 36              | Apr-24 22:00 | 212     | 0    |                 |            |
| NO <sub>x</sub>   | ppb               | 8               | 95.6%     | 16         | Apr-19 | -       | -    | 60              | Apr-07 0:00  | -       | -    |                 |            |
| O <sub>3</sub>    | ppb               | 38              | 95.6%     | 51         | Apr-3  | -       | -    | 62              | Apr-03 18:00 | 82      | 0    |                 |            |
| CO                | ppm               | 0.5             | 96.1%     | 1.1        | Apr-19 | -       | -    | 3.8             | Apr-07 0:00  | 13      | 0    |                 |            |
| THC               | ppm               | 2.1             | 95.6%     | 2.3        | Apr-3  | -       | -    | 3               | Apr-22 6:00  | -       | -    |                 |            |
| PM <sub>2.5</sub> | µg/m <sup>3</sup> | 8.0             | 95.6%     | 20.9       | Apr-3  | 30      | 0    | 34.1            | Apr-03 13:00 | -       | -    |                 |            |



Instrument Uptime (%)

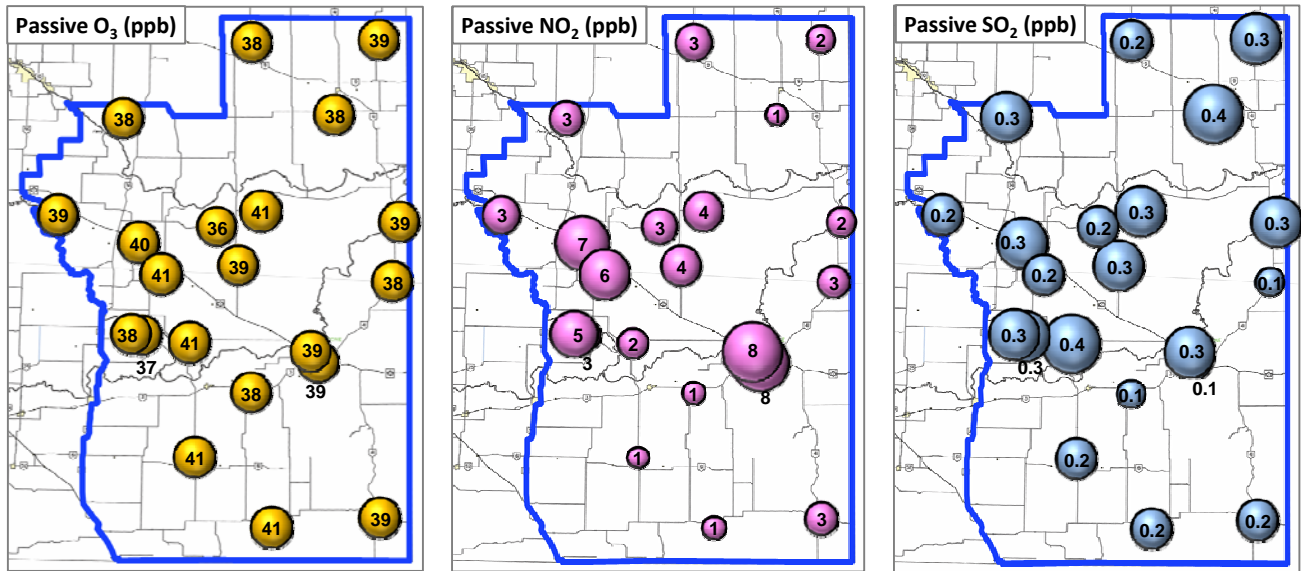


Wind Rose (km/hr)



# Palliser Airshed Society - April 2011 Summary Report

## Passive Sampling Results



Rover Station in Storage - No Monitoring Data

## Monthly Update

\* Crescent Heights Station - 32 hours no data between April 20 and April 21 due to instrument malfunctioning. The problem has been resolved.

- After the above event, THC baseline shifted. The baseline of affected data has been corrected

\* The PAS website address is [www.palliserairshed.com](http://www.palliserairshed.com)