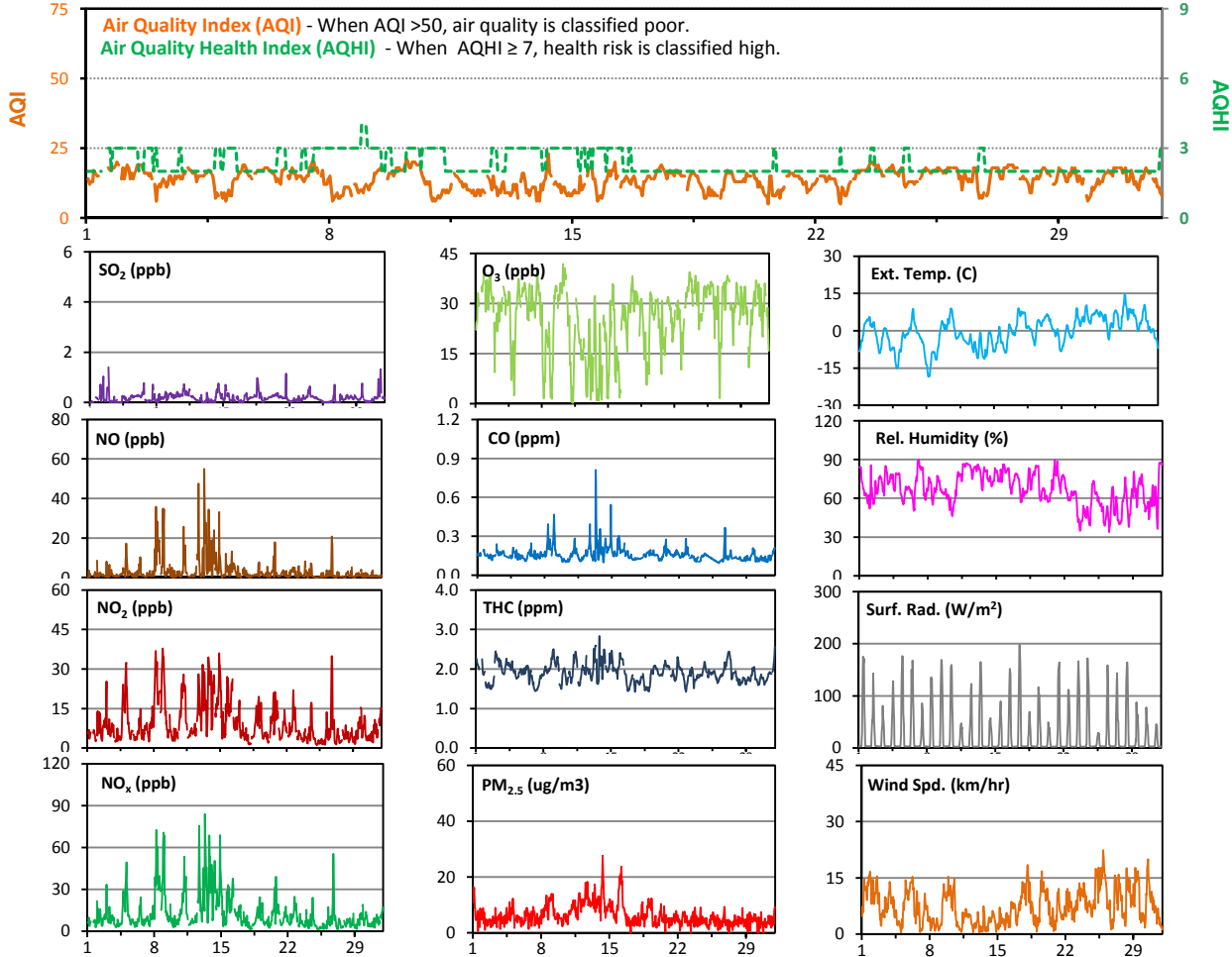


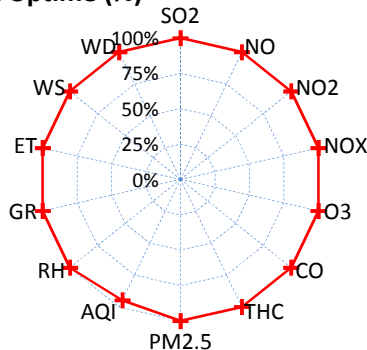
Palliser Airshed Society - December 2011 Summary Report

Continuous Sampling Results - Crescent Heights Station

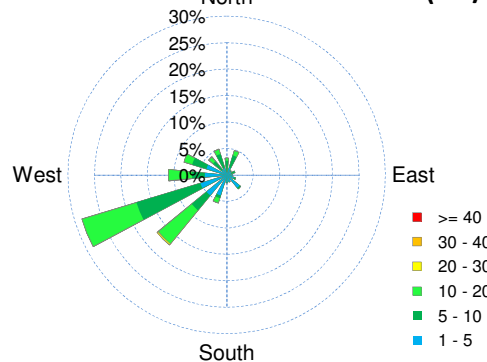
Pollutants		Month Records		24-Hour Records				1-Hour Records			
Name	Conc Unit	Avg. Conc.	Uptime	Maximum		AAAQO Objective	Exceed No.	Maximum		AAAQO Objective	Exceed No.
				Conc	Time			Conc	Time		
SO ₂	ppb	0.2	100.0%	0.4	Dec-18	48	0	1.4	Dec-03 0:00	172	0
NO	ppb	3	100.0%	14	Dec-13	-	-	55	Dec-13 8:00	-	-
NO ₂	ppb	9	100.0%	24	Dec-8	-	-	38	Dec-08 23:00	159	0
NO _x	ppb	13	100.0%	37	Dec-8	-	-	84	Dec-13 8:00	-	-
O ₃	ppb	26	100.0%	34	Dec-25	-	-	42	Dec-10 6:00	82	0
CO	ppm	0.2	100.0%	0.2	Dec-13	-	-	0.8	Dec-13 8:00	13	0
THC	ppm	1.9	100.0%	2.1	Dec-3	-	-	2.8	Dec-13 20:00	-	-
PM _{2.5}	µg/m ³	6.2	100.0%	12.1	Dec-12	30	0	27.7	Dec-14 8:00	-	-



Instrument Uptime (%)

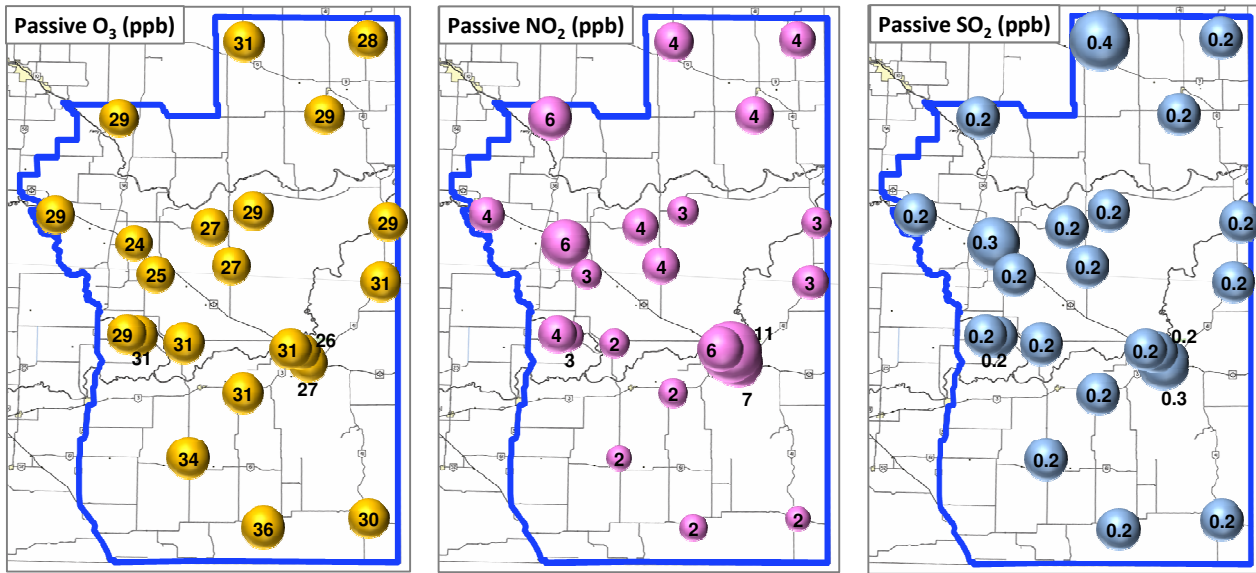


Wind Rose (km/hr)



Palliser Airshed Society - December 2011 Summary Report

Passive Sampling Results



Monthly Update

- * The measured ambient concentrations of all parameters are within the AAAQO for the month of December 2011.
- * All parameters are above 90% operational for the month of December 2011.
- * No operational issues during the month of December. Routine calibration was performed on December 1, 2011.