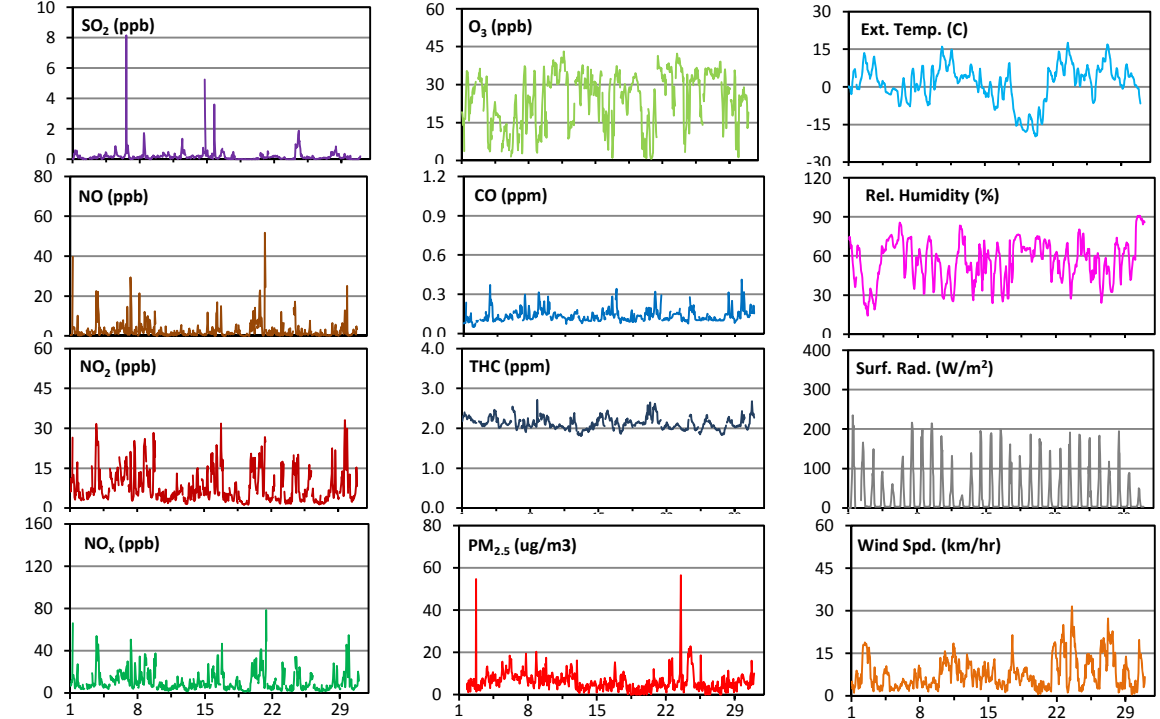
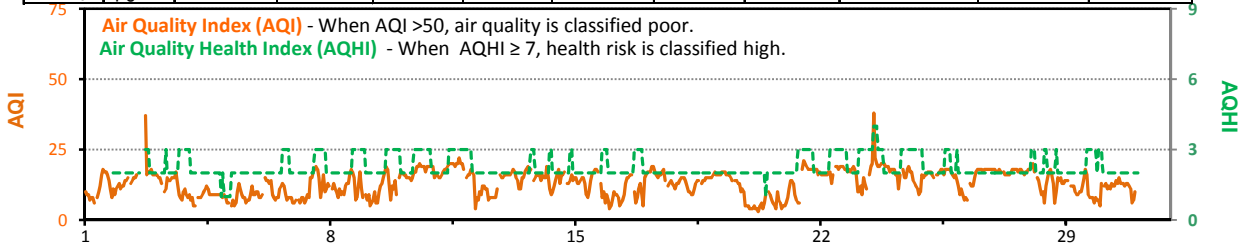


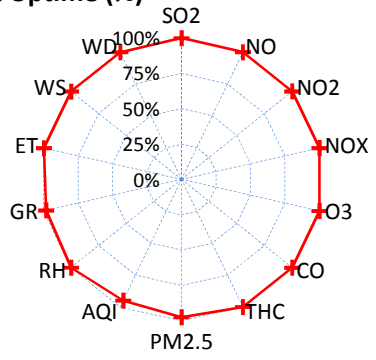
# Palliser Airshed Society - November 2011 Summary Report

## Continuous Sampling Results - Crescent Heights Station

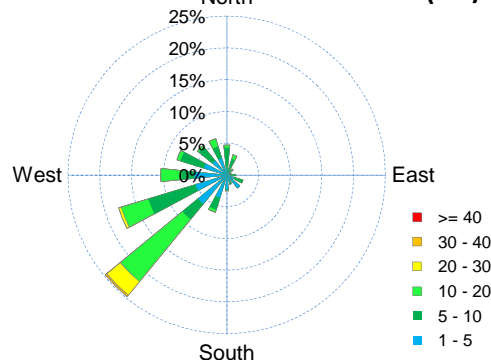
Pollutants		Month Records		24-Hour Records				1-Hour Records			
Name	Conc Unit	Avg. Conc.	Uptime	Maximum		AAAQO	Exceed No.	Maximum		AAAQO	Exceed No.
				Conc	Time	Objective		Conc	Time	Objective	
SO <sub>2</sub>	ppb	0.2	100.0%	0.7	Nov-6	48	0	8.1	Nov-06 15:00	172	0
NO	ppb	3	100.0%	8	Nov-20	-	-	52	Nov-21 9:00	-	-
NO <sub>2</sub>	ppb	8	100.0%	14	Nov-20	-	-	33	Nov-29 17:00	159	0
NO <sub>x</sub>	ppb	11	100.0%	22	Nov-20	-	-	78	Nov-21 9:00	-	-
O <sub>3</sub>	ppb	24	100.0%	36	Nov-11	-	-	43	Nov-11 17:00	82	0
CO	ppm	0.1	100.0%	0.2	Nov-16	-	-	0.4	Nov-29 17:00	13	0
THC	ppm	2.1	100.0%	2.4	Nov-20	-	-	2.7	Nov-08 18:00	-	-
PM <sub>2.5</sub>	µg/m <sup>3</sup>	6.2	97.4%	12.9	Nov-24	30	0	56.5	Nov-23 13:00	-	-



**Instrument Uptime (%)**

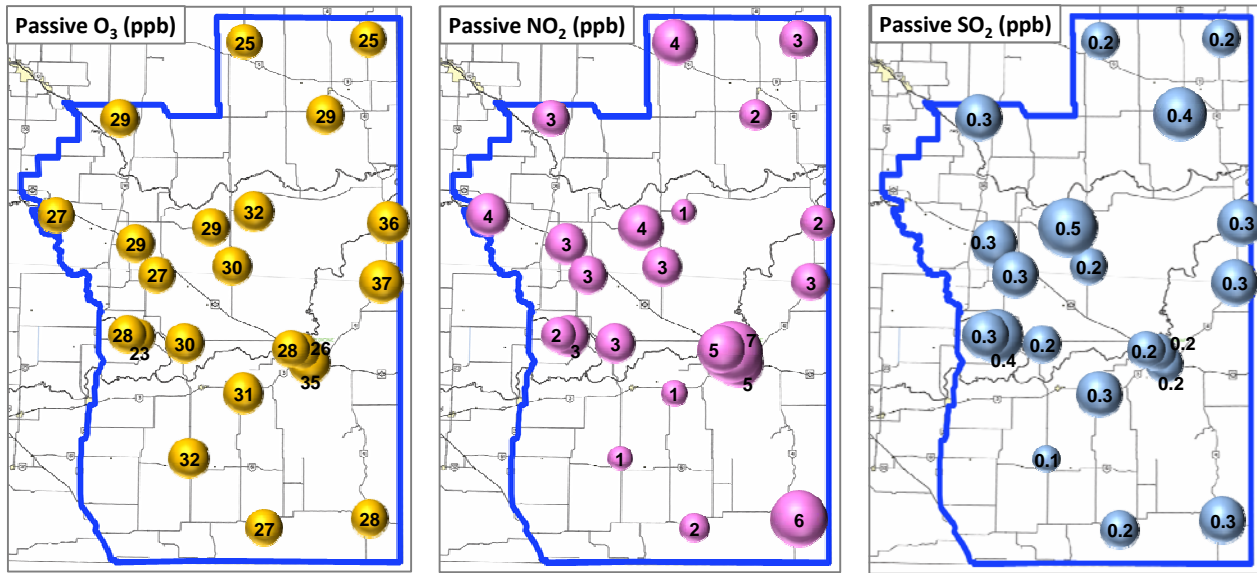


**Wind Rose (km/hr)**



# Palliser Airshed Society - November 2011 Summary Report

## Passive Sampling Results



### Monthly Update

- \* The measured ambient concentrations of all parameters are within the AAAQO for the month of November 2011.
- \* All parameters are above 90% operational for the month of November 2011.
- \* The PM<sub>2.5</sub> analyzer was malfunctioning on November 1. It was repaired on November 1.