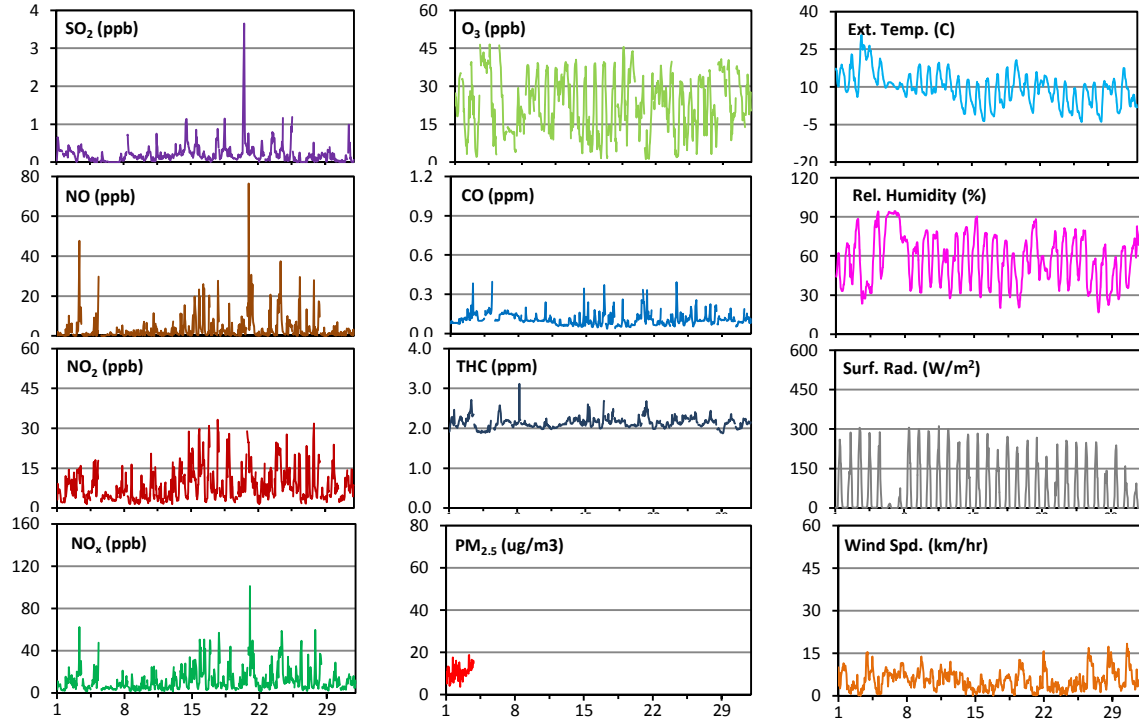
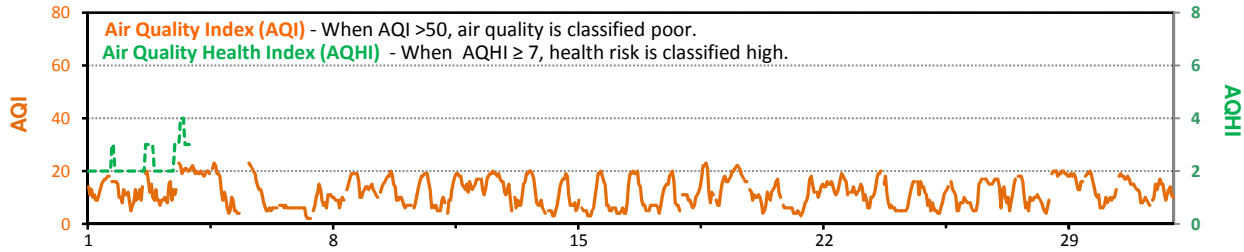


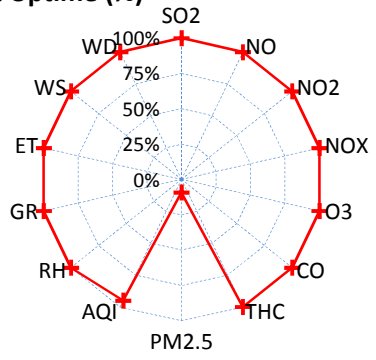
# Palliser Airshed Society - October 2011 Summary Report

## Continuous Sampling Results - Crescent Heights Station

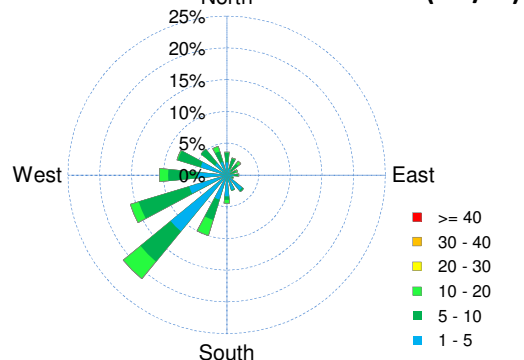
Pollutants		Month Records		24-Hour Records				1-Hour Records			
Name	Conc Unit	Avg. Conc.	Uptime	Maximum		AAAQO	Exceed No.	Maximum		AAAQO	Exceed No.
				Conc	Time	Objective		Conc	Time	Objective	
SO <sub>2</sub>	ppb	0.2	100.0%	0.7	Oct-20	48	0	3.7	Oct-20 14:00	172	0
NO	ppb	3	100.0%	11	Oct-24	-	-	76	Oct-21 1:00	-	-
NO <sub>2</sub>	ppb	9	100.0%	15	Oct-24	-	0	33	Oct-17 19:00	159	0
NO <sub>x</sub>	ppb	12	100.0%	26	Oct-24	-	-	101	Oct-21 1:00	-	-
O <sub>3</sub>	ppb	23	100.0%	35	Oct-4	-	0	47	Oct-04 15:00	82	0
CO	ppm	0.1	100.0%	0.2	Oct-3	-	0	0.4	Oct-05 8:00	13	0
THC	ppm	2.1	100.0%	2.3	Oct-21	-	-	3.1	Oct-08 6:00	-	-
PM <sub>2.5</sub>	µg/m <sup>3</sup>	10.8	9.1%	13.1	Oct-3	30	-	18.8	Oct-03 9:00	-	-



Instrument Uptime (%)

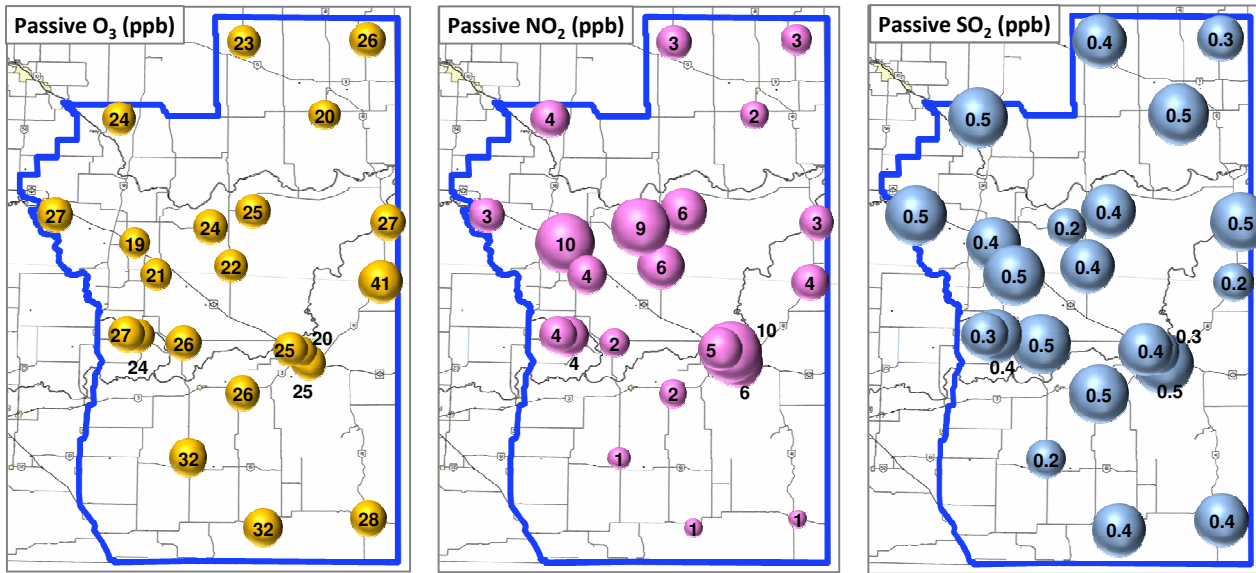


Wind Rose (km/hr)



# Palliser Airshed Society - October 2011 Summary Report

## Passive Sampling Results



## Monthly Update

- \* The measured ambient concentrations of all parameters are within the AAAQO for the month of October 2011.
- \* All parameters are above 90% operational for the month of October 2011, with the exception of the PM<sub>2.5</sub> monitor, AB Environment Reference #252518.
- \* The PM<sub>2.5</sub> monitor was malfunctioning on October 3. The monitor continued malfunctioning the remainder of the month. It was repaired on November 1, 2011.