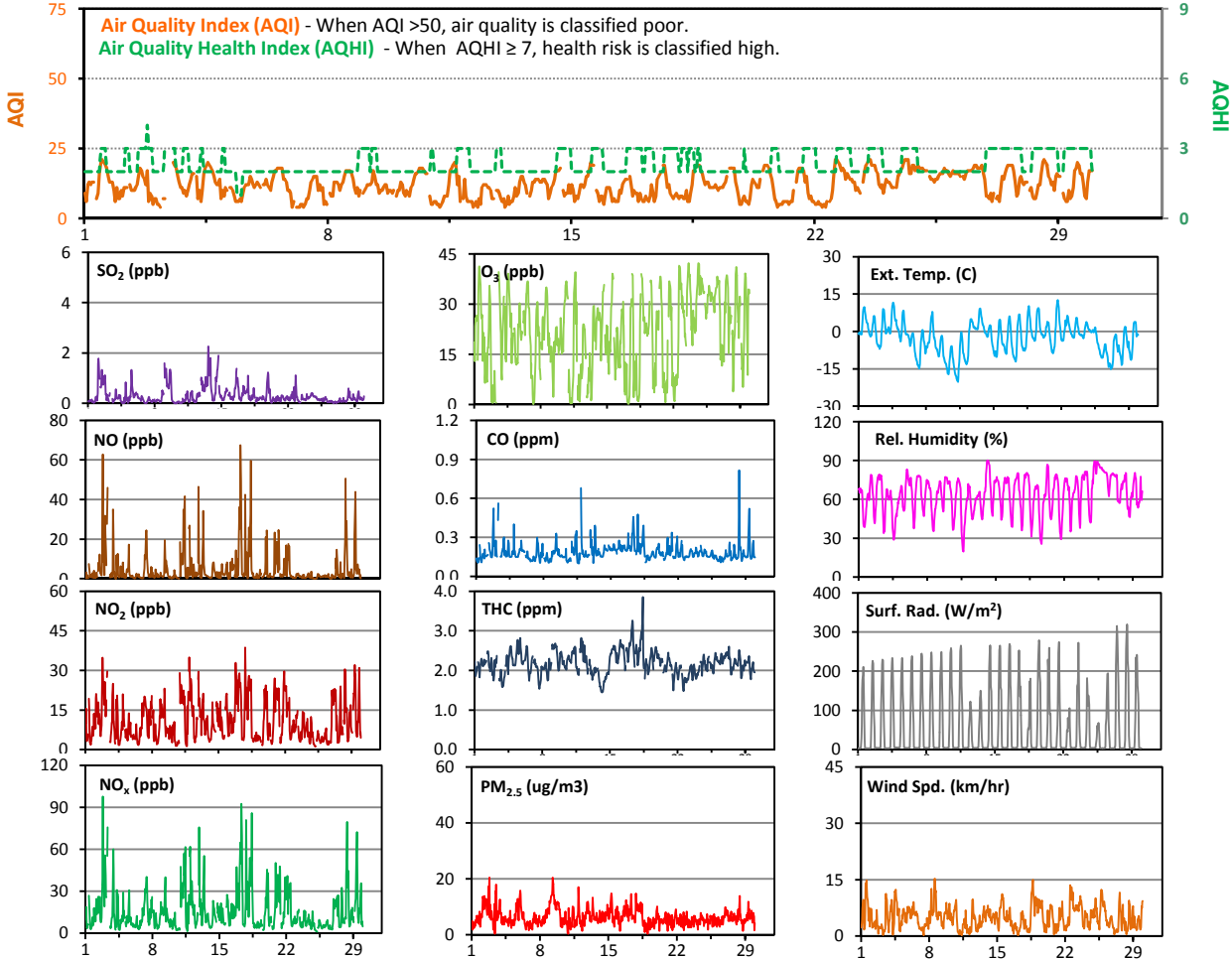


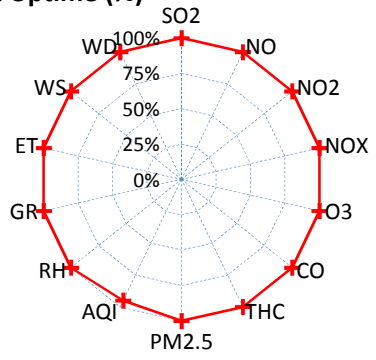
Palliser Airshed Society - February 2012 Summary Report

Continuous Sampling Results - Crescent Heights Station

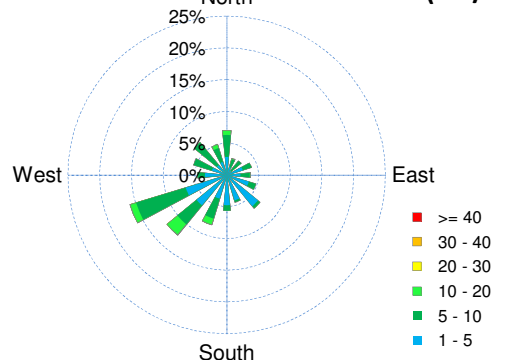
Pollutants		Month Records		24-Hour Records				1-Hour Records			
Name	Conc Unit	Avg. Conc.	Uptime	Maximum		AAAQO	Exceed No.	Maximum		AAAQO	Exceed No.
				Conc	Time	Objective		Conc	Time	Objective	
SO ₂	ppb	0.3	100.0%	0.9	Feb-13	48	0	2.3	Feb-13 16:00	172	0
NO	ppb	5	100.0%	16	Feb-17	-	-	67	Feb-17 8:00	-	-
NO ₂	ppb	11	100.0%	18	Feb-17	-	-	39	Feb-17 20:00	159	0
NO _x	ppb	16	100.0%	33	Feb-17	-	-	98	Feb-02 20:00	-	-
O ₃	ppb	22	100.0%	32	Feb-24	-	-	42	Feb-23 15:00	82	0
CO	ppm	0.2	100.0%	0.3	Feb-17	-	-	0.8	Feb-28 9:00	13	0
THC	ppm	2.2	100.0%	2.6	Feb-17	-	-	3.9	Feb-18 10:00	-	-
PM _{2.5}	µg/m ³	6.4	100.0%	12.5	Feb-9	30	0	20.5	Feb-02 20:00	-	-



Instrument Uptime (%)

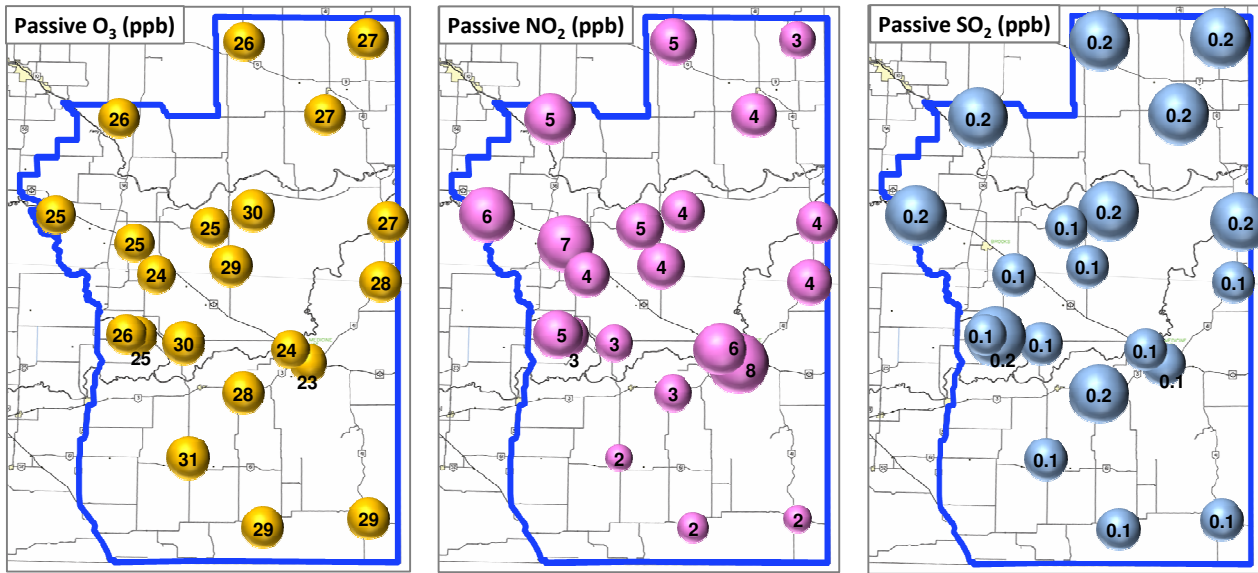


Wind Rose (km/hr)



Palliser Airshed Society - February 2012 Summary Report

Passive Sampling Results



Monthly Update

- * The measured ambient concentrations of all parameters are within the AAAQO for the month of February 2012.
- * All compliance parameters are above 90% operational for the month of February 2012.
- * Routine calibration was performed on February 3, 2012.
- * There were no operational issues during the month of February 2012.