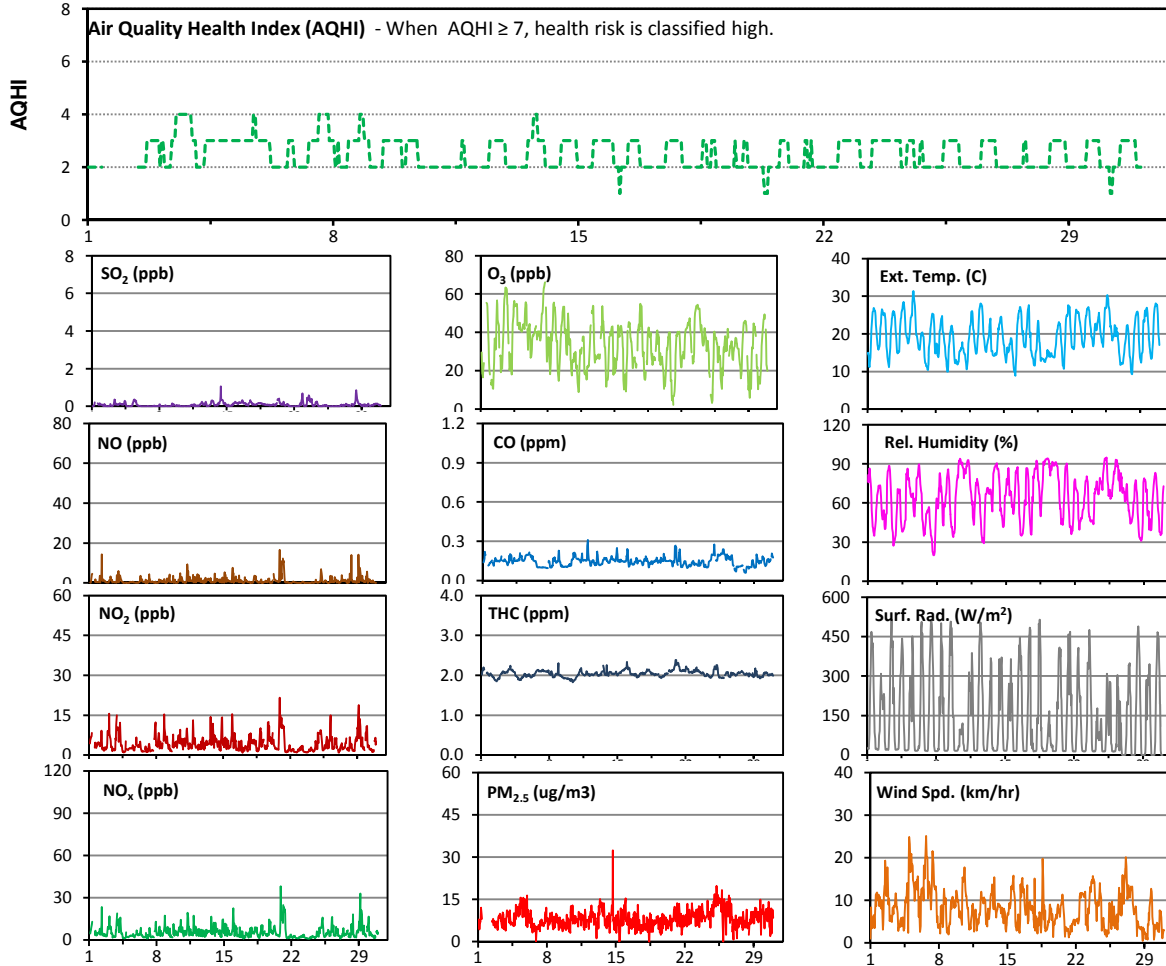


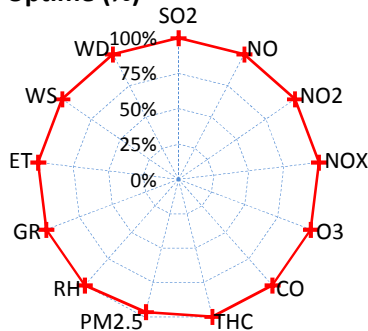
Palliser Airshed Society - June 2012 Summary Report

Continuous Sampling Results - Crescent Heights Station

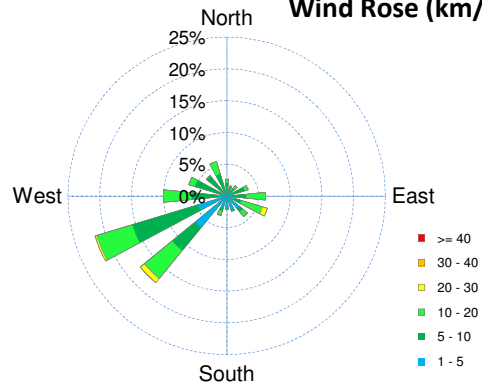
| Pollutants | | Month Records | | 24-Hour Records | | | | 1-Hour Records | | | |
|-------------------|-------------------|---------------|--------|-----------------|--------|-----------------|------------|----------------|--------------|-----------------|------------|
| Name | Conc Unit | Avg. Conc. | Uptime | Maximum | | AAAQO Objective | Exceed No. | Maximum | | AAAQO Objective | Exceed No. |
| | | | | Conc | Time | | | Conc | Time | | |
| SO ₂ | ppb | 0.1 | 100.0% | 0.2 | Jun-28 | 48 | 0 | 1.1 | Jun-14 10:00 | 172 | 0 |
| NO | ppb | 1 | 100.0% | 3 | Jun-21 | - | - | 17 | Jun-20 22:00 | - | - |
| NO ₂ | ppb | 4 | 100.0% | 7 | Jun-29 | - | - | 22 | Jun-20 22:00 | 159 | 0 |
| NO _x | ppb | 5 | 100.0% | 10 | Jun-29 | - | - | 38 | Jun-20 22:00 | - | - |
| O ₃ | ppb | 33 | 100.0% | 46 | Jun-7 | - | - | 66 | Jun-07 18:00 | 82 | 0 |
| CO | ppm | 0.1 | 100.0% | 0.2 | Jun-25 | - | - | 0.3 | Jun-11 21:00 | 13 | 0 |
| THC | ppm | 2.0 | 100.0% | 2.2 | Jun-21 | - | - | 2.4 | Jun-21 1:00 | - | - |
| PM _{2.5} | µg/m ³ | 8 | 96.5% | 13 | Jun-25 | 30 | 0 | 32 | Jun-14 17:00 | 80 | 0 |



Instrument Uptime (%)

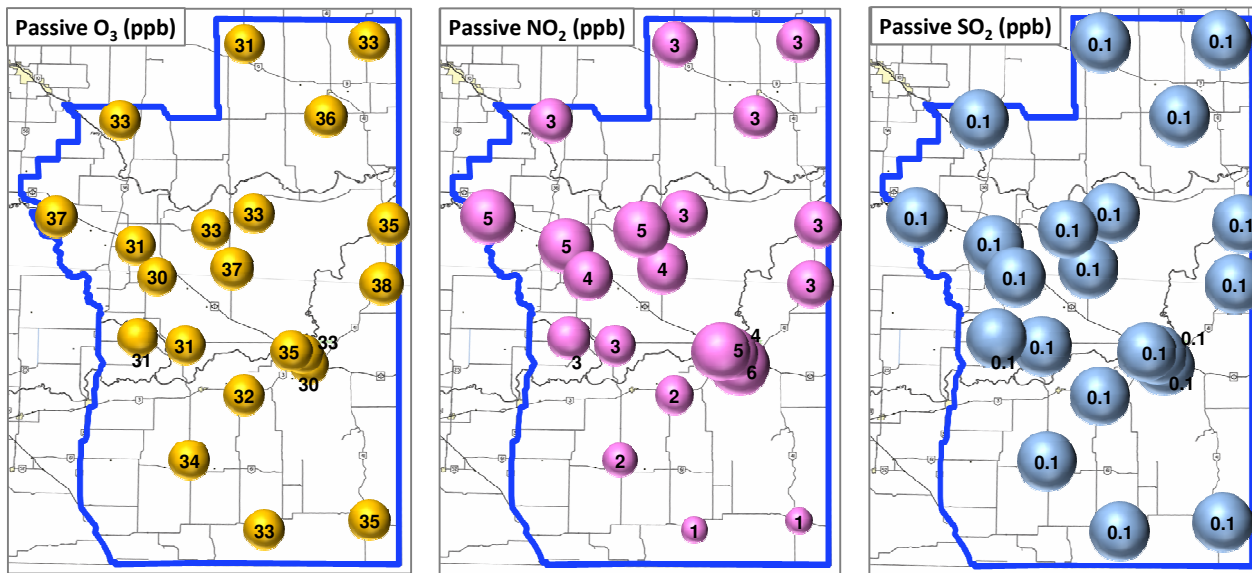


Wind Rose (km/hr)



Palliser Airshed Society - June 2012 Summary Report

Passive Sampling Results



Monthly Update

- * All data has been slope, intercept, and baseline corrected. Data may change after validation process.
- * The measured ambient concentrations of all parameters are within the AAAQO for the month of June 2012.
- * All compliance parameters are above 90% operational for the month of June 2012.
- * Routine calibration was performed on June 1, 2012.
- * The operational issues for the month of June include the PM_{2.5} analyzer malfunctioning on June 1 and 2. This was caused by an issue with the filter, which was resolved June 2 by the AMEC Technician. 25 hours of data was flagged as "analyzer failure".
- * Passive results for Site 22 are not available for the month of June, due to a damaged passive device.