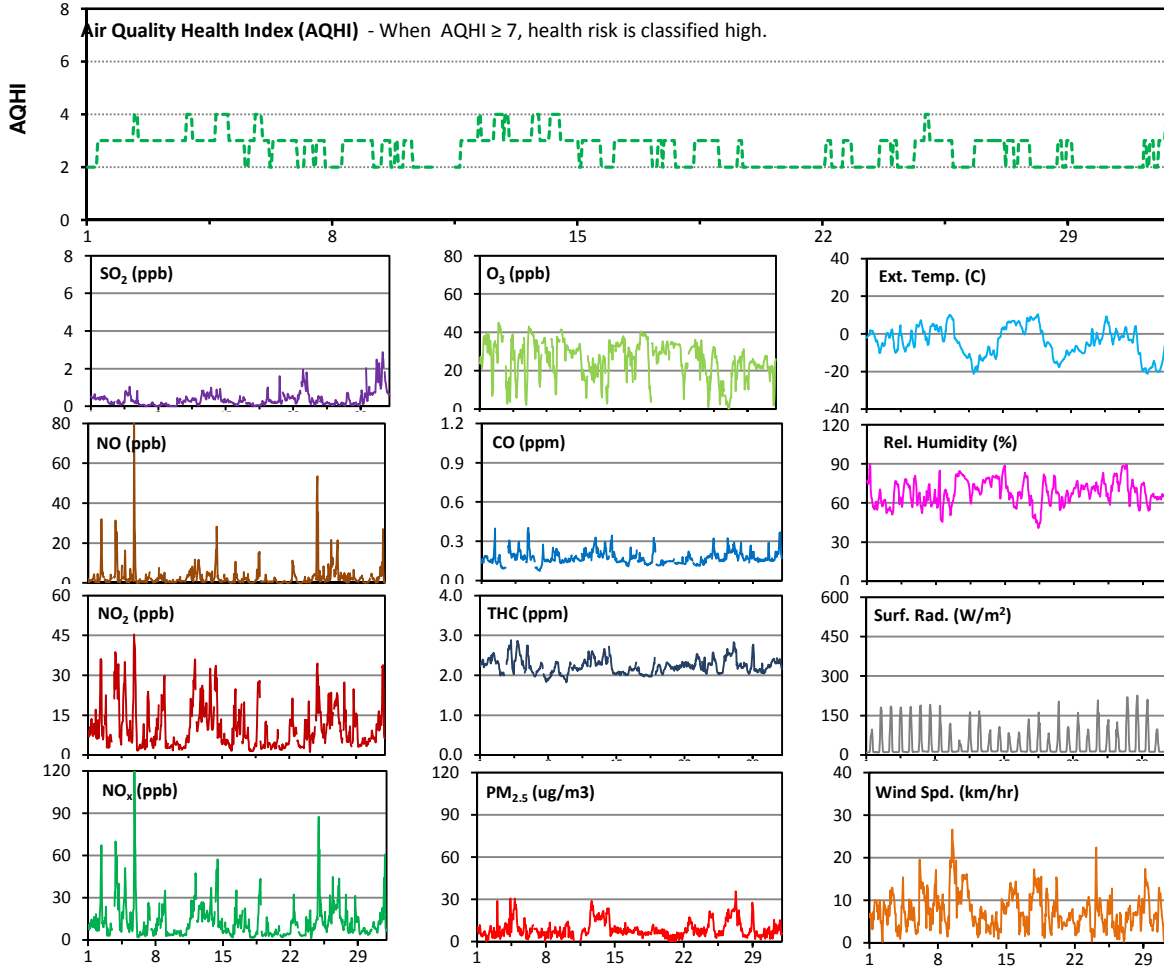


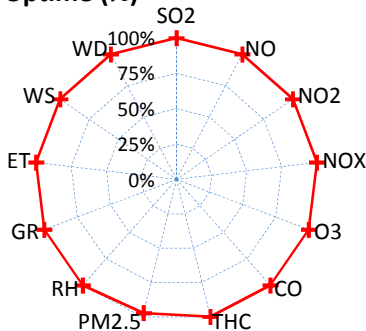
Palliser Airshed Society - January 2013 Summary Report

Continuous Sampling Results - Crescent Heights Station

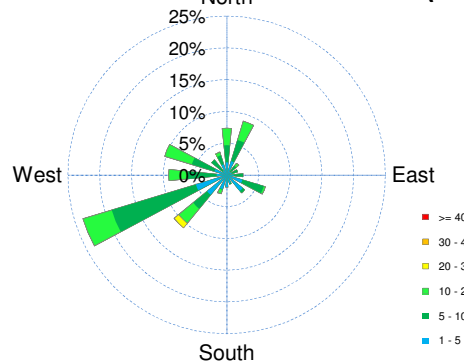
Pollutants		Month Records		24-Hour Records				1-Hour Records			
Name	Conc Unit	Avg. Conc.	Uptime	Maximum		AAAQO	Exceed	Maximum		AAAQO	Exceed
				Conc	Time	Objective	No.	Conc	Time	Objective	No.
SO ₂	ppb	0.4	100.0%	1.3	Jan-31	48	0	2.9	Jan-31 7:00	172	0
NO	ppb	3	100.0%	8.8	Jan-5	-	-	86.2	Jan-05 20:00	-	-
NO ₂	ppb	10.3	100.0%	19.4	Jan-12	-	-	45.4	Jan-05 20:00	159	0
NO _x	ppb	13.3	100.0%	25.4	Jan-5	-	-	131.1	Jan-05 20:00	-	-
O ₃	ppb	26	100.0%	37	Jan-6	-	-	45	Jan-03 0:00	82	0
CO	ppm	0.2	100.0%	0.2	Jan-12	-	-	0.4	Jan-05 20:00	13	0
THC	ppm	2.2	100.0%	2.5	Jan-4	-	-	2.9	Jan-04 5:00	-	-
PM _{2.5}	µg/m ³	9	97.3%	18	Jan-27	30	0	36	Jan-27 7:00	-	-



Instrument Uptime (%)

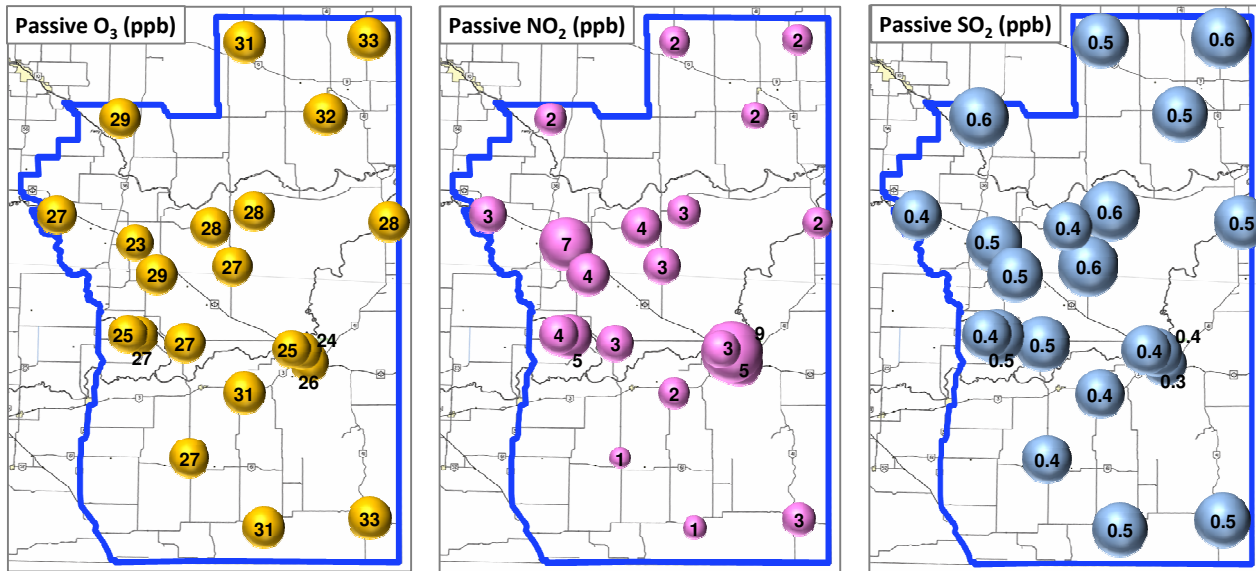


Wind Rose (km/hr)



Palliser Airshed Society - January 2013 Summary Report

Passive Sampling Results



Monthly Update

- * All data has been slope, intercept, and baseline corrected. Data may change after validation process.
- * The measured ambient concentrations of all parameters are within the AAAQO for the month of January 2013.
- * All compliance parameters are above 90% operational for the month of January 2013.
- * Routine calibration was performed on January 3, 2013.
- * The operational issues for the month of January include 22 hours of PM_{2.5} data flagged as "analyzer failure" throughout the month, due to the PM_{2.5} analyzer intermittently recording negative values. 2 hours of PM_{2.5} data are also flagged as "calibration". Non-routine calibration was performed on the O₃ analyzer on January 21. Spans had shown some drift over the previous few days. The internal pump was re-built, and the analyzer returned to normal operations following calibration. No data was affected.
- * Due to poor road conditions, the Site 1 passive sample was not collected.