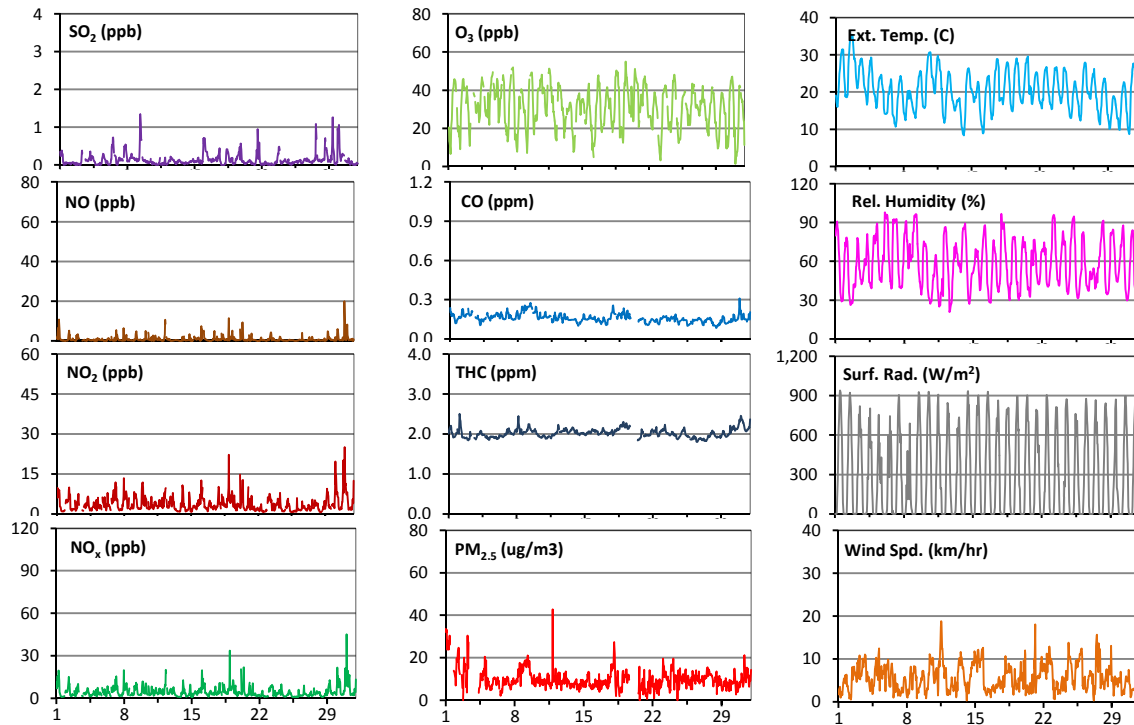
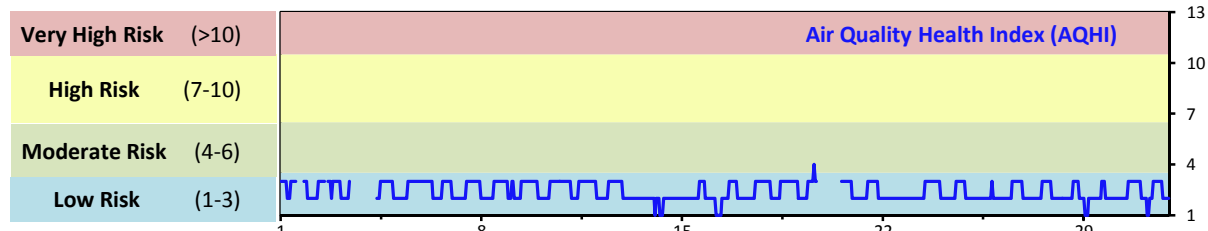


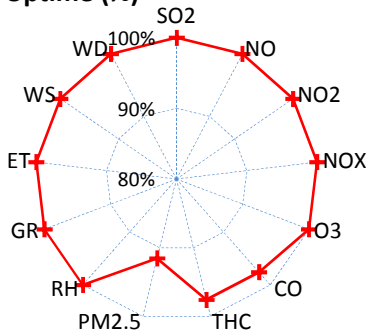
Palliser Airshed Society - July 2013 Summary Report

Continuous Sampling Results - Crescent Heights Station

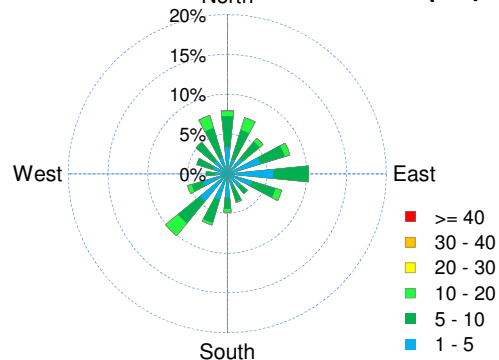
Pollutants	Month Records	24-Hour Records						1-Hour Records					
		Name	Conc Unit	Avg. Conc.	Uptime	Maximum		AAAQO Objective	Exceed No.	Maximum		AAAQO Objective	Exceed No.
						Conc	Time			Conc	Time		
SO ₂	ppb	0.1	100.0%	0.3	Jul-29	48	0	1.3	Jul-09 9:00	172	0		
NO	ppb	1.0	100.0%	2.8	Jul-31	-	-	20.1	Jul-31 1:00	-	-		
NO ₂	ppb	3.7	100.0%	7.3	Jul-30	-	-	25.1	Jul-31 1:00	159	0		
NO _x	ppb	4.6	100.0%	9.3	Jul-31	-	-	45.2	Jul-31 1:00	-	-		
O ₃	ppb	31	100.0%	38	Jul-11	-	-	55	Jul-19 14:00	82	0		
CO	ppm	0.2	97.6%	0.2	Jul-9	-	-	0.3	Jul-30 22:00	13	0		
THC	ppm	2.0	97.6%	2.2	Jul-31	-	-	2.5	Jul-02 4:00	-	-		
PM _{2.5}	µg/m ³	10	91.5%	15	Jul-2	30	0	43	Jul-11 21:00	-	-		



Instrument Uptime (%)

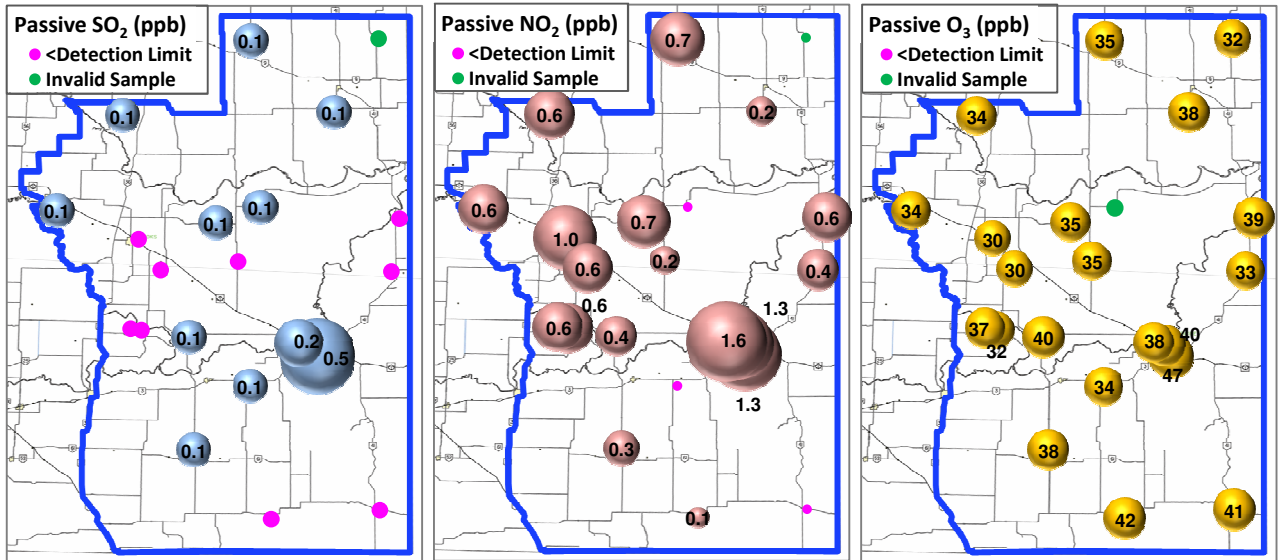


Wind Rose (km/hr)



Palliser Airshed Society - July 2013 Summary Report

Passive Sampling Results



Monthly Update

- * All data has been slope, intercept, and baseline corrected. Data may change after validation process.
- * The measured ambient concentrations of all parameters are within the AAAQO for the month of July 2013.
- * All compliance parameters are above 90% operational for the month of July 2013.
- * Routine monthly calibration was performed on July 3 for the Crescent Heights station.
- * The operational issues for the month of July include 38 hours of PM_{2.5} data flagged as "analyzer failure", due to intermittent negative readings. 3 hours of PM_{2.5} data is flagged as "maintenance" on July 3-4 during the filter change and calibration. The analyzer did not function properly following the filter change on July 3, so the Technician returned for repairs on July 4. On July 19-20, the HVAC unit in the station malfunctioned, causing an increase in internal station temperature. CO, THC, and PM_{2.5} were affected by the high temperatures, 18 hours of CO and THC data, and 22 hours of PM_{2.5} data is flagged as "analyzer failure" due to this event.