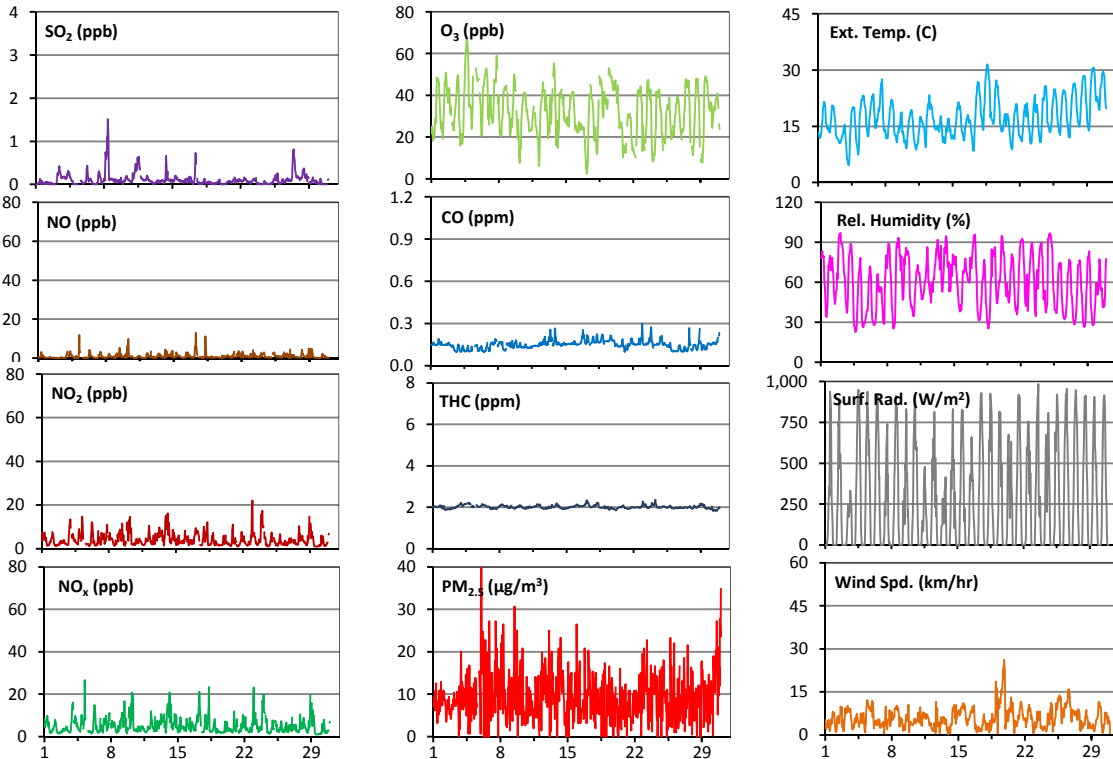
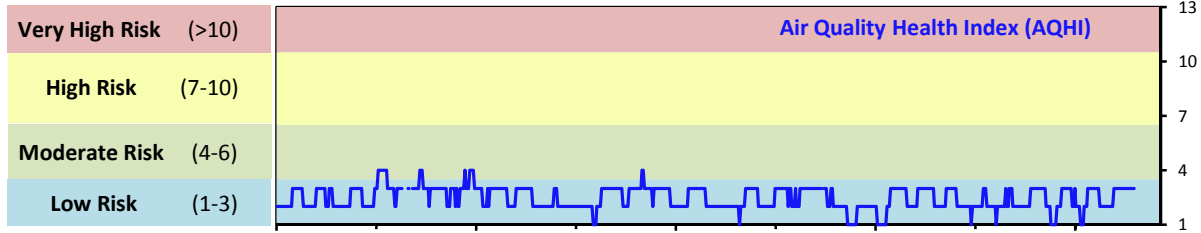


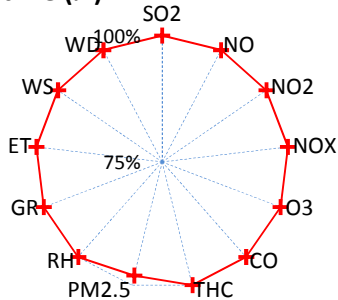
Palliser Airshed Society - June 2013 Summary Report

Continuous Sampling Results - Crescent Heights Station

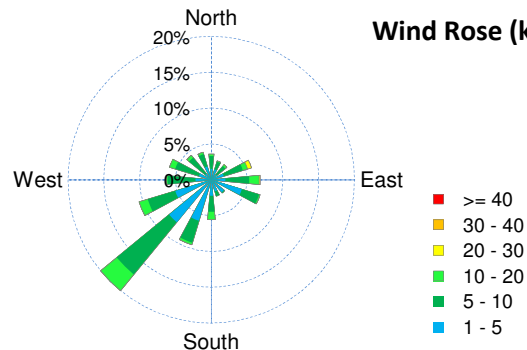
Pollutants	Month Records	24-Hour Records						1-Hour Records					
		Name	Conc Unit	Avg. Conc.	Uptime	Maximum		AAAQO Objective	Exceed No.	Maximum		AAAQO Objective	Exceed No.
						Conc	Time			Conc	Time		
SO ₂	ppb	0.1	100.0%	0.4	Jun-8	48	0	1.5	Jun-08 10:00	172	0		
NO	ppb	1.0	100.0%	2.0	Jun-17	-	-	13.1	Jun-17 7:00	-	-		
NO ₂	ppb	4.1	100.0%	7.0	Jun-13	-	-	22.1	Jun-23 0:00	159	0		
NO _x	ppb	5.1	100.0%	8.3	Jun-14	-	-	26.7	Jun-05 6:00	-	-		
O ₃	ppb	32	100.0%	44	Jun-19	-	-	68	Jun-04 17:00	82	0		
CO	ppm	0.2	100.0%	0.2	Jun-13	-	-	0.3	Jun-23 0:00	13	0		
THC	ppm	2.0	100.0%	2.2	Jun-4	-	-	2.4	Jun-24 7:00	-	-		
PM _{2.5}	µg/m ³	9	98.1%	16	Jun-30	30	0	63	Jun-06 1:00	-	-		



Instrument Uptime (%)

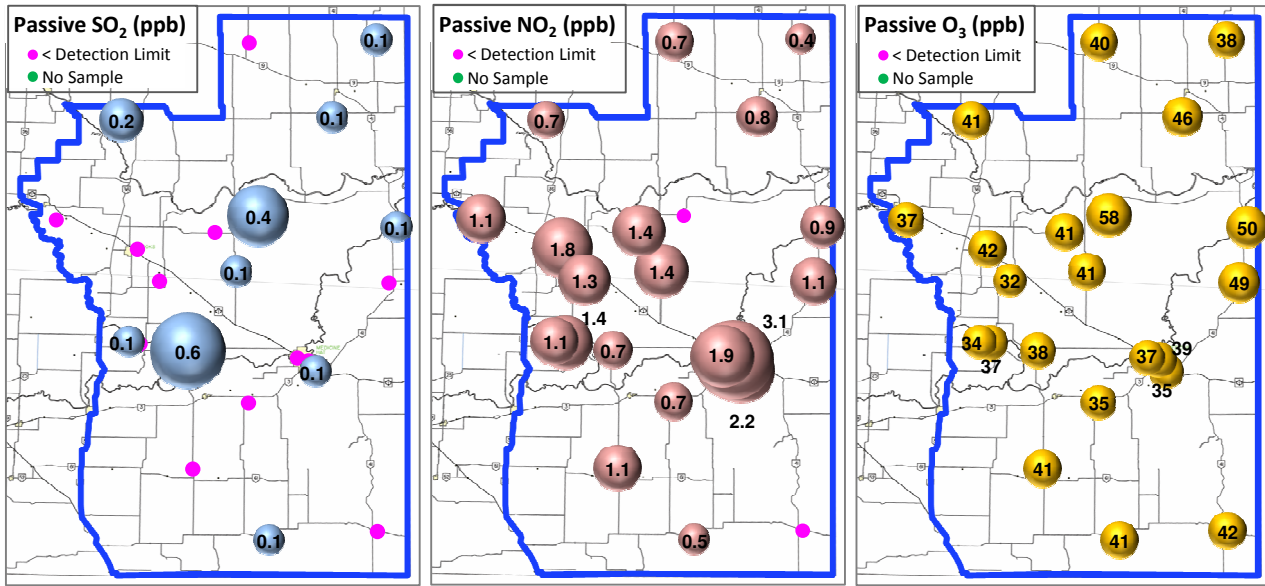


Wind Rose (km/hr)



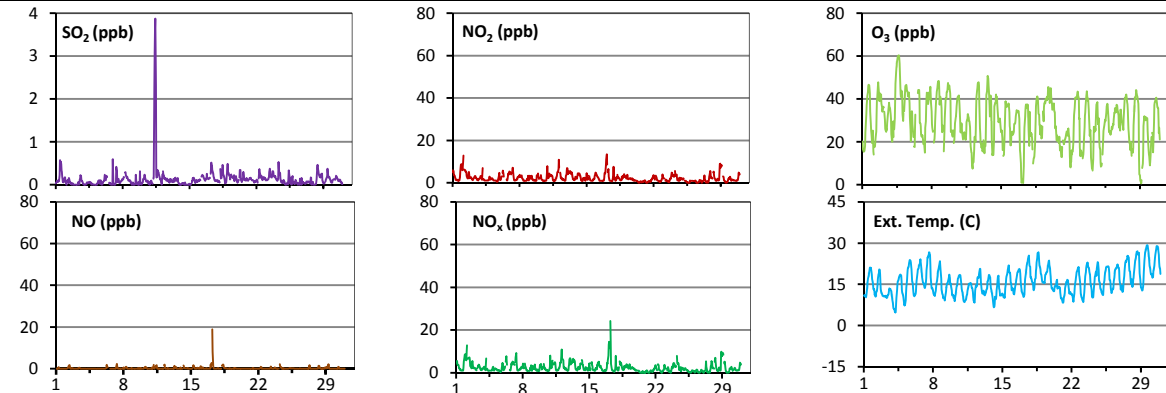
Palliser Airshed Society - June 2013 Summary Report

Passive Sampling Results

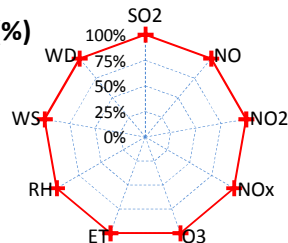


Continuous Sampling Results - Taber PAML Station

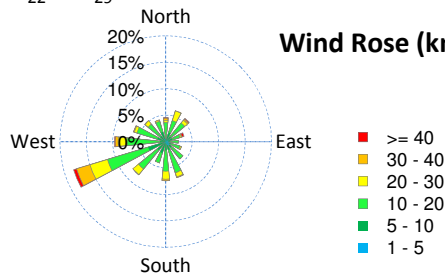
Pollutants		Month Records		24-Hour Records				1-Hour Records			
Name	Conc Unit	Avg. Conc.	Uptime	Maximum		AAAQO Objective	Exceed No.	Maximum		AAAQO Objective	Exceed No.
				Conc	Time			Conc	Time		
SO ₂	ppb	0.1	100.0%	0.8	Jun-11	48	0	3.9	Jun-11 11:00	172	0
NO	ppb	0.2	100.0%	1.5	Jun-17	-	-	19.0	Jun-17 6:00	-	-
NO ₂	ppb	2.2	100.0%	4.6	Jun-2	-	-	13.4	Jun-17 3:00	159	0
NO _x	ppb	2.4	100.0%	5.2	Jun-17	-	-	24.2	Jun-17 6:00	-	-
O ₃	ppb	30	100.0%	45	Jun-4	-	0	60	Jun-04 16:00	82	0



Instrument Uptime (%)



Wind Rose (km/hr)



Monthly Update

- * All data has been slope, intercept, and baseline corrected. Data may change after validation process.
- * The measured ambient concentrations of all parameters are within the AAAQO for the month of June 2013.
- * All compliance parameters are above 90% operational for the month of June 2013.
- * Routine monthly calibration was performed on June 5 for the Crescent Heights station and May 6 for the Taber station.
- * The operational issues for the month of June include: Crescent Heights: 10 hours of PM_{2.5} data is flagged as "analyzer failure", due to intermittent negative readings. 4 hours of PM_{2.5} data is flagged as "maintenance" on June 5 during the filter change and calibration. There are no other operational issues to report.