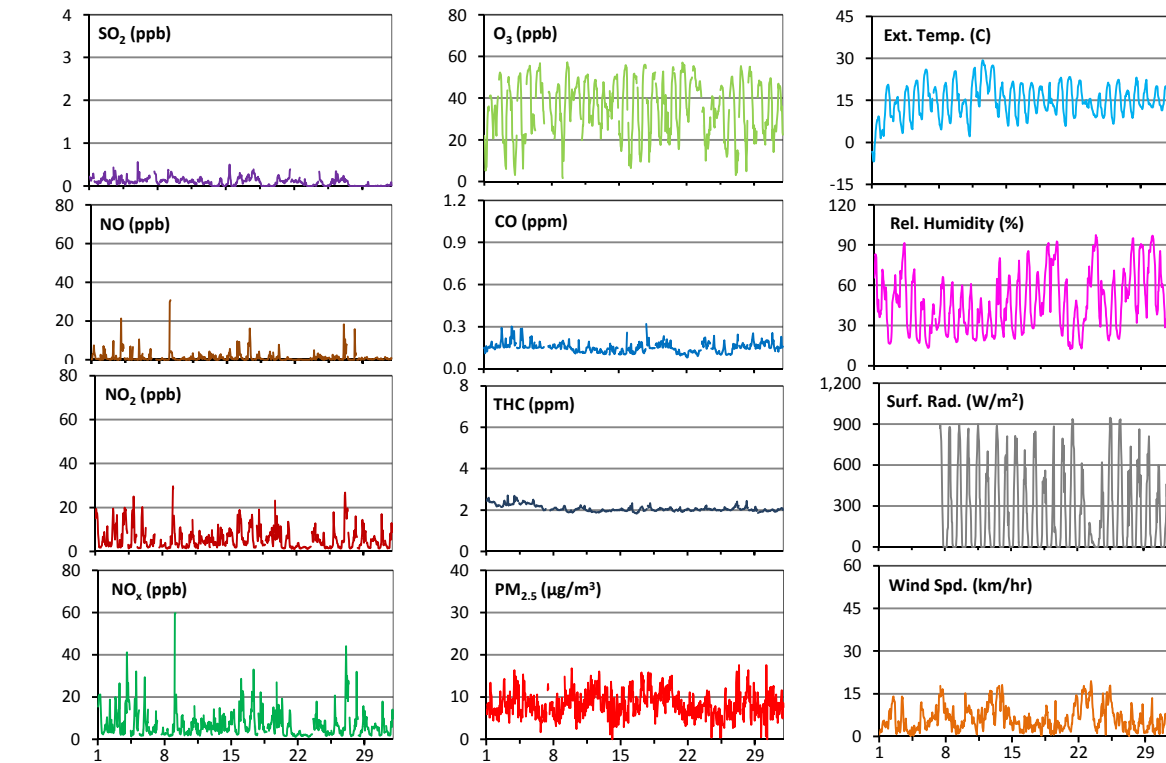
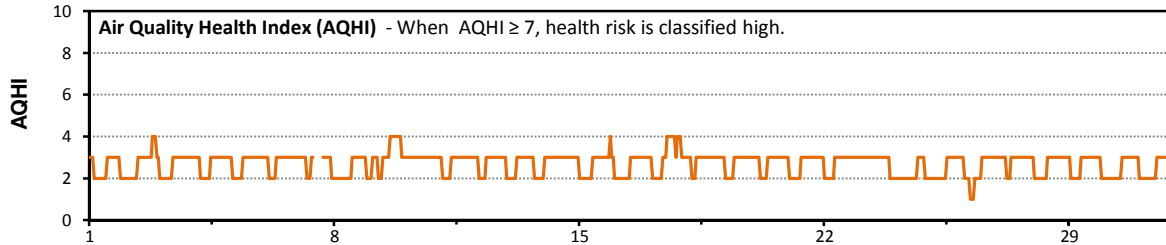


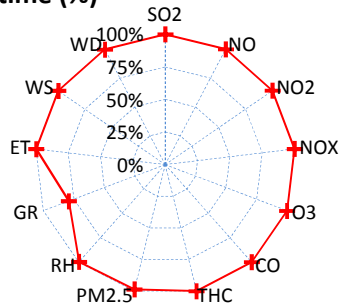
Palliser Airshed Society - May 2013 Summary Report

Continuous Sampling Results - Crescent Heights Station

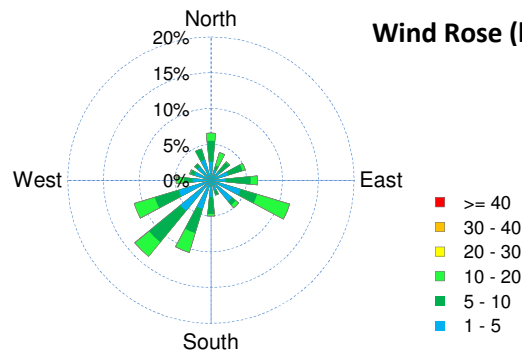
Pollutants		Month Records		24-Hour Records				1-Hour Records			
Name	Conc Unit	Avg. Conc.	Uptime	Maximum		AAAQO Objective	Exceed No.	Maximum		AAAQO Objective	Exceed No.
				Conc	Time			Conc	Time		
SO ₂	ppb	0.1	100.0%	0.2	May-9	48	0	0.6	May-06 0:00	172	0
NO	ppb	1.2	100.0%	3.7	May-9	-	-	30.7	May-09 4:00	-	-
NO ₂	ppb	5.8	100.0%	9.7	May-27	-	-	29.8	May-09 3:00	159	0
NO _x	ppb	7	100.0%	12.9	May-4	-	-	59.6	May-09 4:00	-	-
O ₃	ppb	36	100.0%	45	May-22	-	-	57	May-09 15:00	82	0
CO	ppm	0.2	100.0%	0.2	May-4	-	-	0.3	May-17 21:00	13	0
THC	ppm	2.1	100.0%	2.4	May-1	-	-	2.7	May-03 6:00	-	-
PM _{2.5}	µg/m ³	8	98.7%	12	May-17	30	0	18	May-30 5:00	-	-



Instrument Uptime (%)

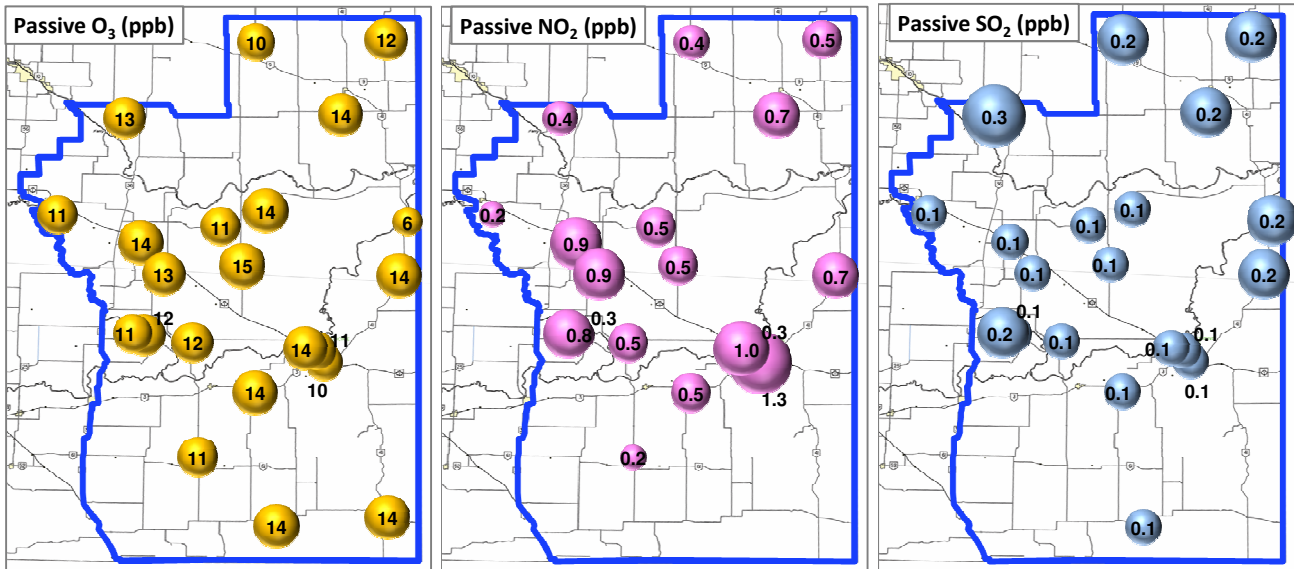


Wind Rose (km/hr)



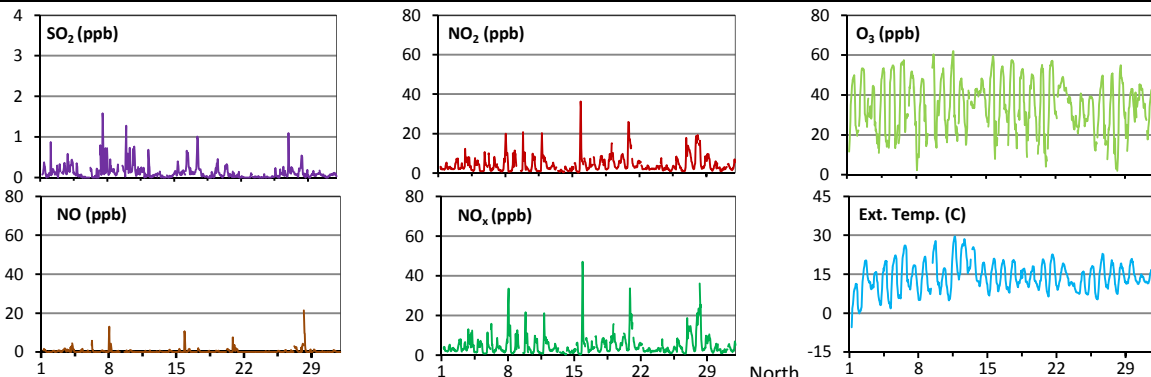
Palliser Airshed Society - May 2013 Summary Report

Passive Sampling Results

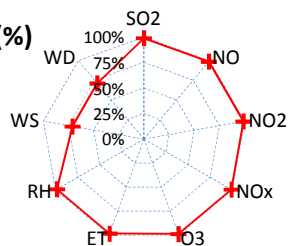


Continuous Sampling Results - Taber PAML Station

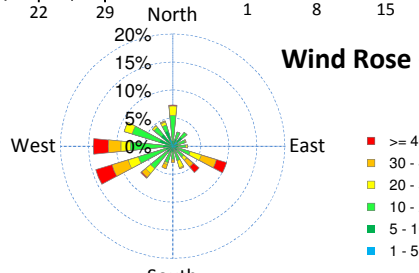
Pollutants		Month Records		24-Hour Records				1-Hour Records			
Name	Conc Unit	Avg. Conc.	Uptime	Maximum		AAAQO Objective	Exceed No.	Maximum		AAAQO Objective	Exceed No.
				Conc	Time			Conc	Time		
SO ₂	ppb	0.1	98.8%	0.4	May-7	48	0	1.6	May-07 13:00	172	0
NO	ppb	0.4	98.9%	2.6	May-28	-	-	21.5	May-28 6:00	-	-
NO ₂	ppb	4.3	98.9%	8.8	May-27	-	0	36.3	May-15 21:00	159	0
NO _x	ppb	4.7	98.9%	11.2	May-28	-	-	47	May-15 21:00	-	-
O ₃	ppb	35	98.9%	42	May-22	-	0	62	May-11 18:00	82	0



Instrument Uptime (%)



Wind Rose (km/hr)



Monthly Update

- * All data has been slope, intercept, and baseline corrected. Data may change after validation process.
- * The measured ambient concentrations of all parameters are within the AAAQO for the month of May 2013.
- * All compliance parameters are above 90% operational for the month of May 2013, with the exception of the WS/WD sensor at Taber, and the GSR sensor at Crescent Heights. ESRD Reference #271211 and #269060.
- * Operational issues for Crescent Heights for the month of May include intermittent negative readings for PM2.5. The GSR sensor was reprogrammed on May 7. 2 hours of data for all MET equipment is flagged as "maintenance" during the re-programming of the GSR.
- * Operational issues for Taber for the month of May include 3 hours of data for all parameters flagged as "power failure" on May 13. WS/WD was not operating May 1-9, 3 hours of data for all MET equipment was flagged as "maintenance" when repairs were performed on the WS/WD sensor on May 9. 5 hours of data for all parameters is "missing" May 1 due to programming errors.