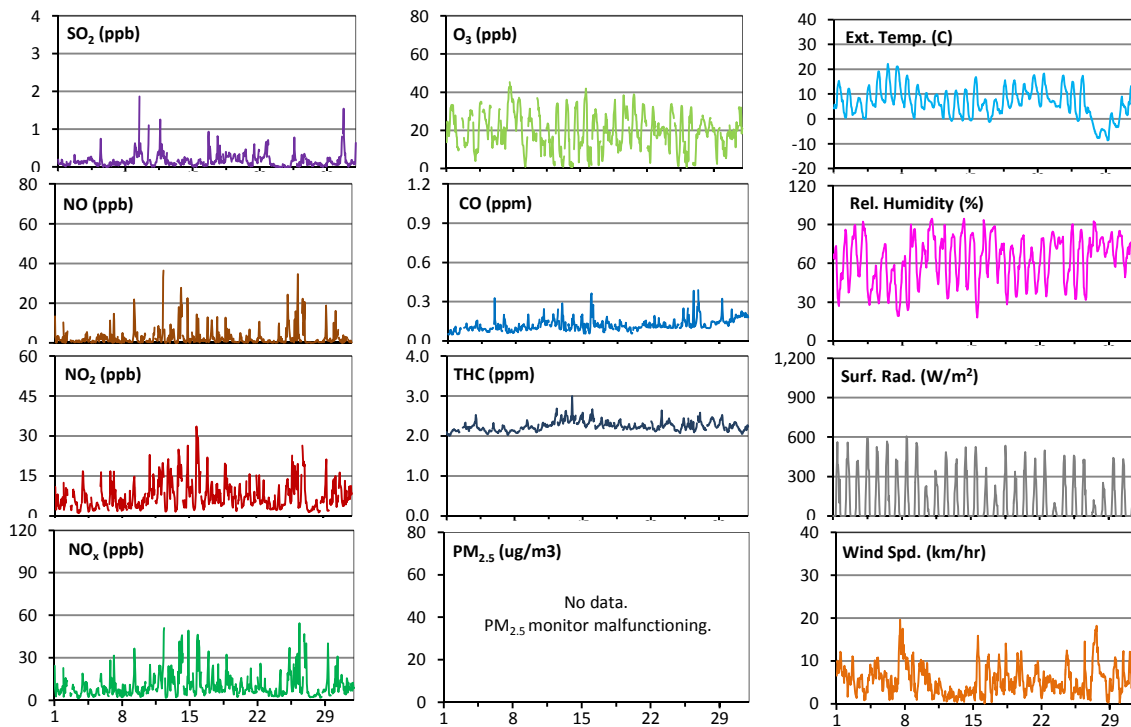
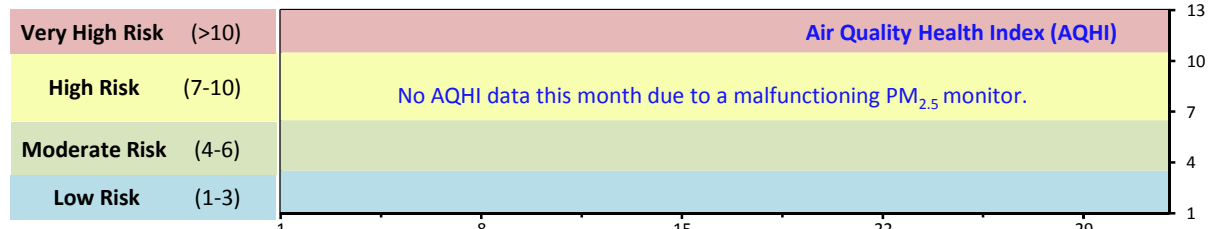


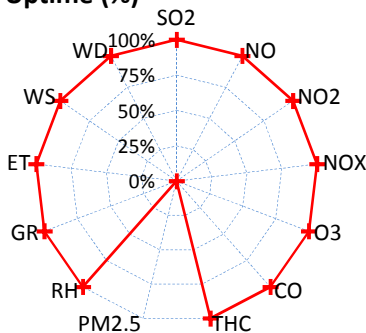
Palliser Airshed Society - October 2013 Summary Report

Continuous Sampling Results - Crescent Heights Station

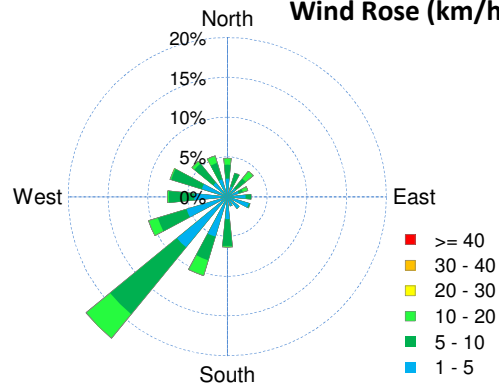
Pollutants		Month Records		24-Hour Records				1-Hour Records			
Name	Conc Unit	Avg. Conc.	Uptime	Maximum		AAAQO Objective	Exceed No.	Maximum		AAAQO Objective	Exceed No.
				Conc	Time			Conc	Time		
SO ₂	ppb	0.2	100.0%	0.4	Oct-9	48	0	1.9	Oct-09 12:00	172	0
NO	ppb	2.6	100.0%	7.9	Oct-26	-	-	36.4	Oct-12 9:00	-	-
NO ₂	ppb	7.5	100.0%	13.1	Oct-26	-	-	33.6	Oct-15 19:00	159	0
NO _x	ppb	10.2	100.0%	21.1	Oct-26	-	-	54.4	Oct-26 9:00	-	-
O ₃	ppb	20	100.0%	31	Oct-7	-	-	45	Oct-07 16:00	82	0
CO	ppm	0.1	100.0%	0.2	Oct-31	-	-	0.4	Oct-26 20:00	13	0
THC	ppm	2.2	100.0%	2.5	Oct-13	-	-	3.0	Oct-13 22:00	-	-



Instrument Uptime (%)

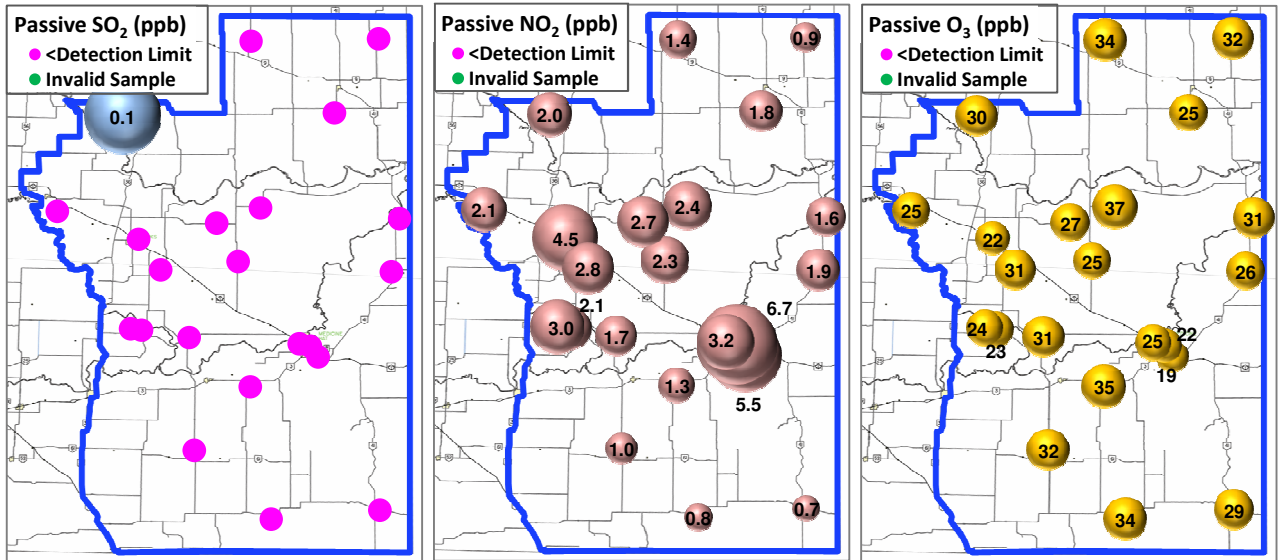


Wind Rose (km/hr)



Palliser Airshed Society - October 2013 Summary Report

Passive Sampling Results



Monthly Update

- * All data has been slope, intercept, and baseline corrected. Data may change after validation process.
- * The measured ambient concentrations of all parameters are within the AAAQO for the month of October 2013.
- * All compliance parameters are above 90% operational for the month of October 2013, with the exception of the PM_{2.5} analyzer. ESRD reference number: 275548.
- * Routine monthly calibration was performed on October 2.
- * The operational issues for the month of October include the PM_{2.5} analyzer malfunctioning. It was not operational for the month of October. The entire analyzer will be replaced in November. All other analyzers were 100% operational.