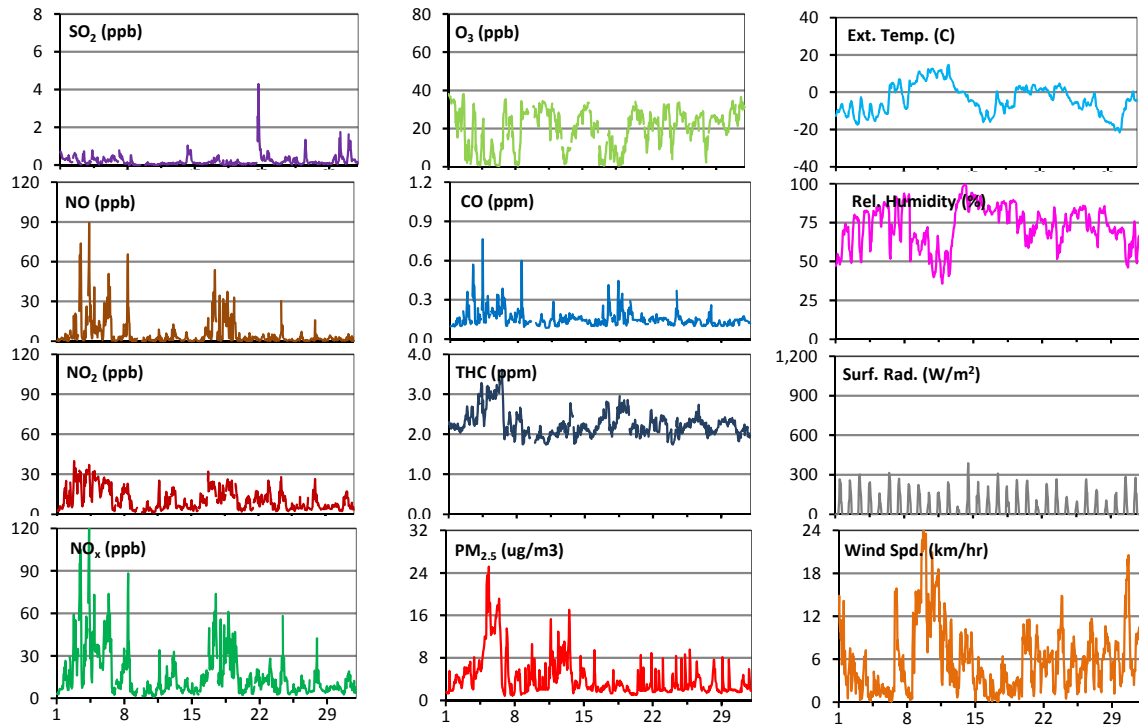
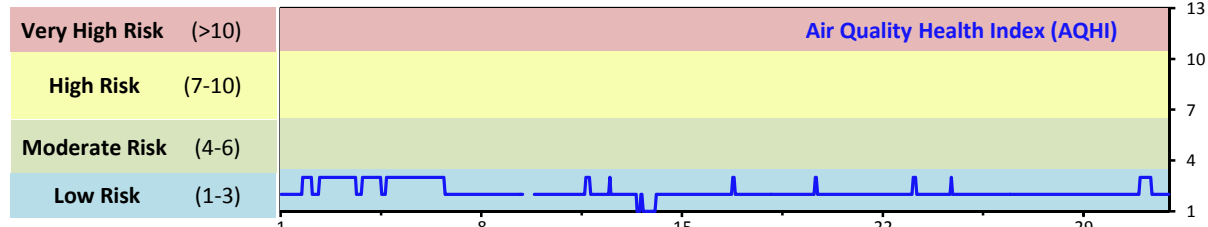


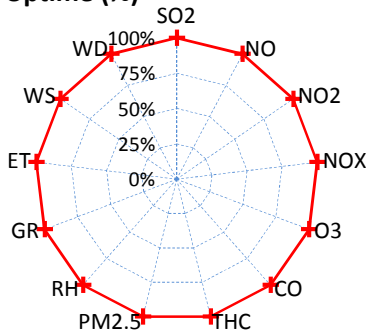
# Palliser Airshed Society - December 2014 Summary Report

## Continuous Sampling Results - Crescent Heights Station

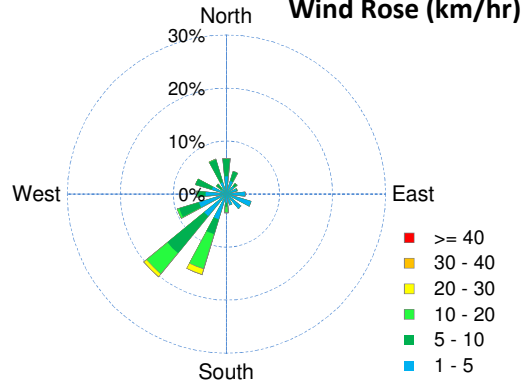
Pollutants	Month Records			24-Hour Records				1-Hour Records				
	Name	Conc Unit	Avg. Conc.	Uptime	Maximum		AAAQO Objective	Exceed No.	Maximum		AAAQO Objective	Exceed No.
					Conc	Time			Conc	Time		
SO <sub>2</sub>	ppb	0.2	100.0%	0.8	Dec-21	48	0	4.3	Dec-21 16:00	172	0	
NO	ppb	5.2	100.0%	23.3	Dec-4	-	-	89.3	Dec-04 9:00	-	-	
NO <sub>2</sub>	ppb	10.8	100.0%	25.8	Dec-4	-	-	39.9	Dec-02 19:00	159	0	
NO <sub>x</sub>	ppb	16.1	100.0%	49.3	Dec-4	-	-	126.2	Dec-04 9:00	-	-	
O <sub>3</sub>	ppb	20	100.0%	31	Dec-1	-	-	38	Dec-02 14:00	82	0	
CO	ppm	0.2	100.0%	0.2	Dec-4	-	-	0.8	Dec-04 9:00	13	0	
THC	ppm	2.3	100.0%	3	Dec-5	-	-	3.6	Dec-06 12:00	-	-	
PM <sub>2.5</sub>	µg/m <sup>3</sup>	4	100.0%	16	Dec-5	30	0	25	Dec-05 9:00	-	-	



Instrument Uptime (%)

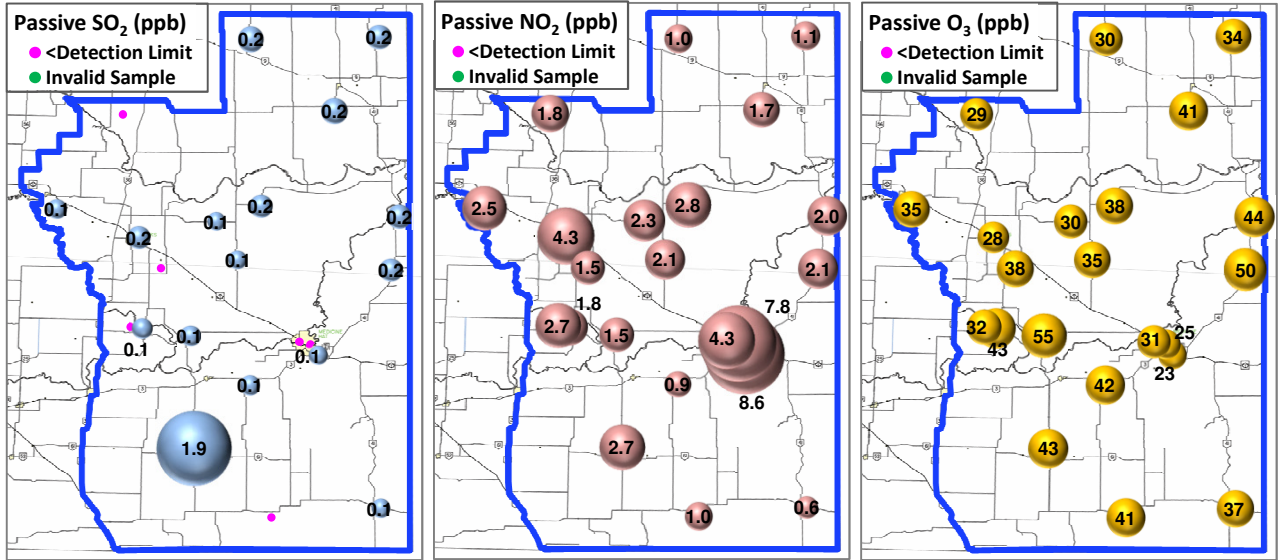


Wind Rose (km/hr)



# Palliser Airshed Society - December 2014 Summary Report

## Passive Sampling Results



## Monthly Update

\*All data has been slope, intercept, and baseline corrected. Data may change after validation process.

\*The measured ambient concentrations of all parameters are within the AAAQO.

\*All compliance parameters are above 90% operational. There are no operational issues to report.