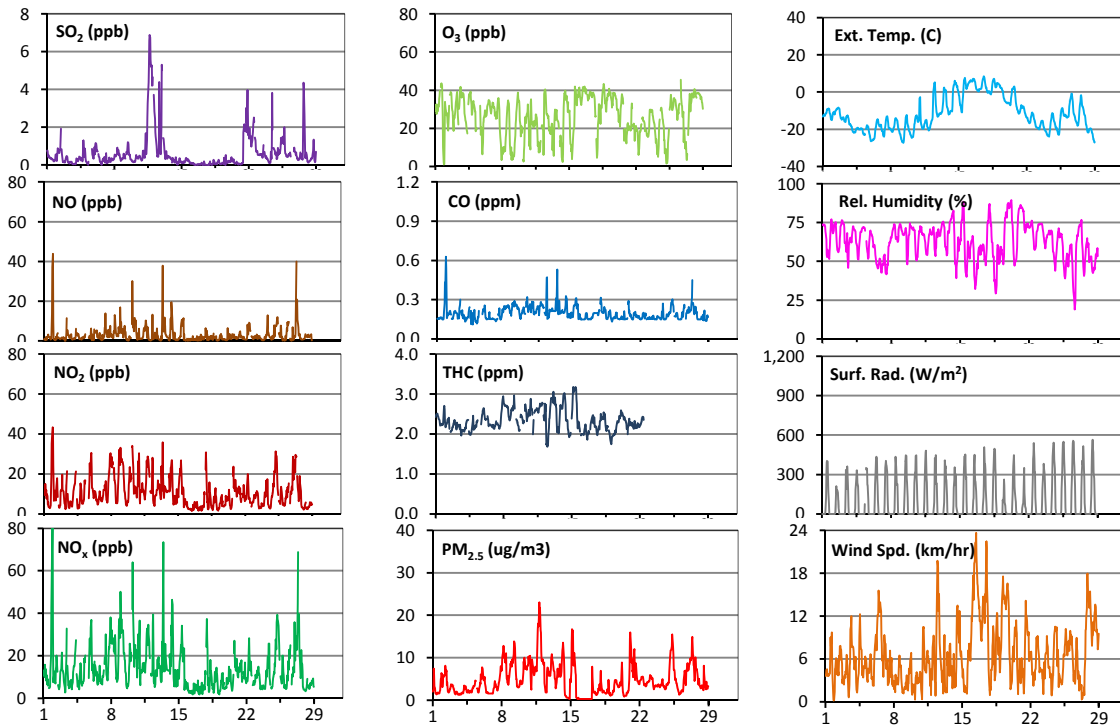
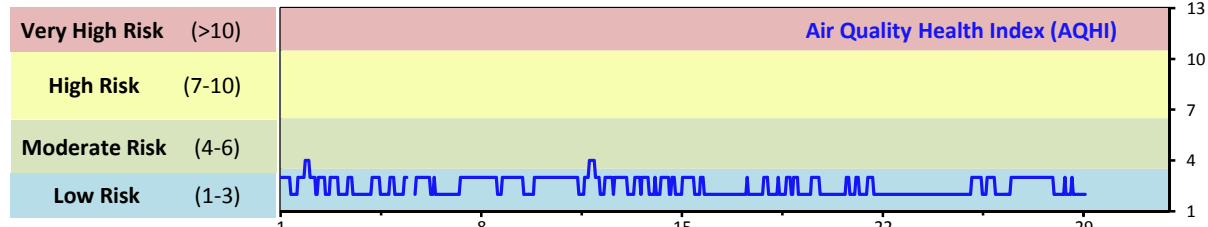


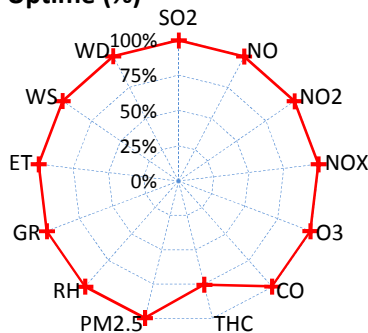
Palliser Airshed Society - February 2014 Summary Report

Continuous Sampling Results - Crescent Heights Station

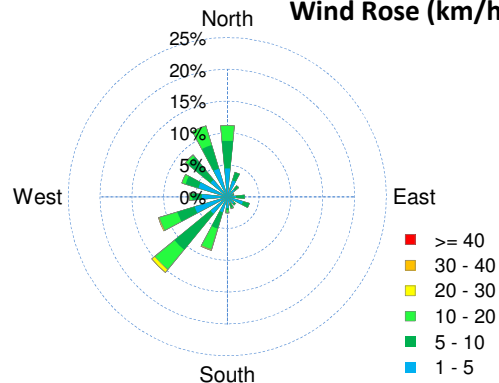
Pollutants	Month Records	24-Hour Records						1-Hour Records					
		Name	Conc Unit	Avg. Conc.	Uptime	Maximum		AAAQO Objective	Exceed No.	Maximum		AAAQO Objective	Exceed No.
						Conc	Time			Conc	Time		
SO ₂	ppb	0.6	99.6%	3.3	Feb-11	48	0	6.9	Feb-11 17:00	172	0		
NO	ppb	3.1	99.6%	6.6	Feb-10	-	-	43.8	Feb-01 23:00	-	-		
NO ₂	ppb	11.0	99.6%	19.0	Feb-8	-	-	43.4	Feb-01 22:00	159	0		
NO _x	ppb	14.0	99.6%	24.6	Feb-10	-	-	86.8	Feb-01 23:00	-	-		
O ₃	ppb	26	99.6%	38	Feb-16	-	-	45	Feb-26 17:00	82	0		
CO	ppm	0.2	99.6%	0.2	Feb-10	-	-	0.6	Feb-01 22:00	13	0		
THC	ppm	2.3	75.4%	2.6	Feb-15	-	-	3.2	Feb-15 10:00	-	-		
PM _{2.5}	µg/m ³	5	99.7%	12	Feb-11	30	0	23	Feb-11 20:00	-	-		



Instrument Uptime (%)

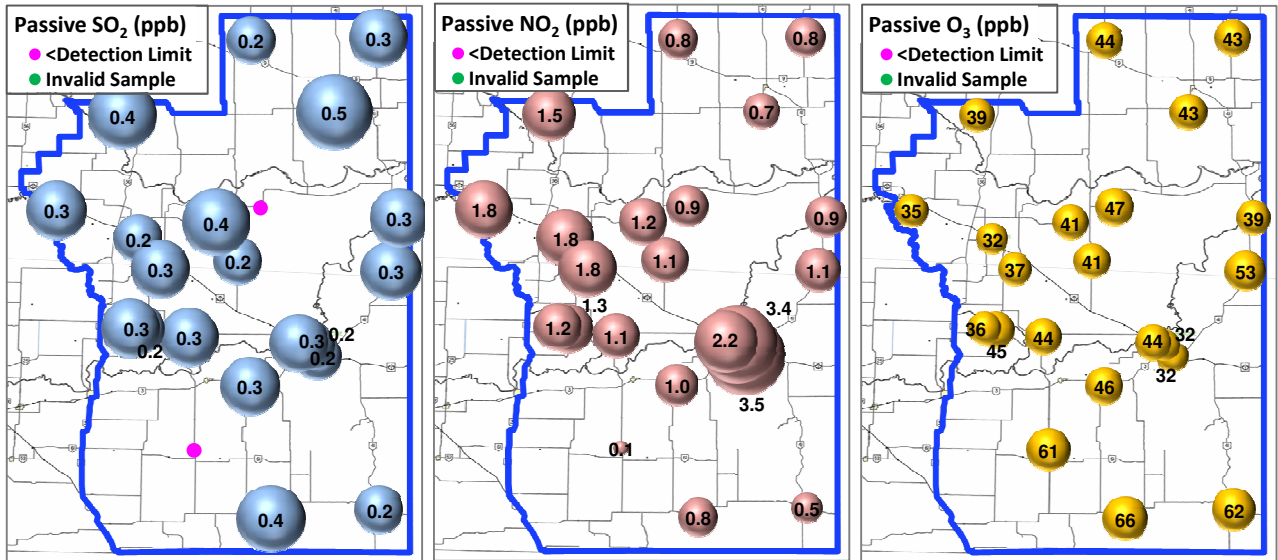


Wind Rose (km/hr)



Palliser Airshed Society - February 2014 Summary Report

Passive Sampling Results



Monthly Update

- * All data has been slope, intercept, and baseline corrected. Data may change after validation process.
- * The measured ambient concentrations of all parameters are within the AAAQO for the month of February.
- * All compliance parameters are above 90% operational for the month of February, with the exception of the THC analyzer (75.6%).
AESRD reference number: 280921
- * Operational issues for the month of February include: 3 hours of data for all pollutant parameters, and 2 hours of data for Met sensors is flagged as "maintenance" on Feb 5 while the data logger was removed for calibration; 155 hours of THC data flagged as "analyzer failure". The THC analyzer failed to maintain >90% operational uptime, due to a failure with the pressure switch in the zero air supply. This was repaired on March 2.