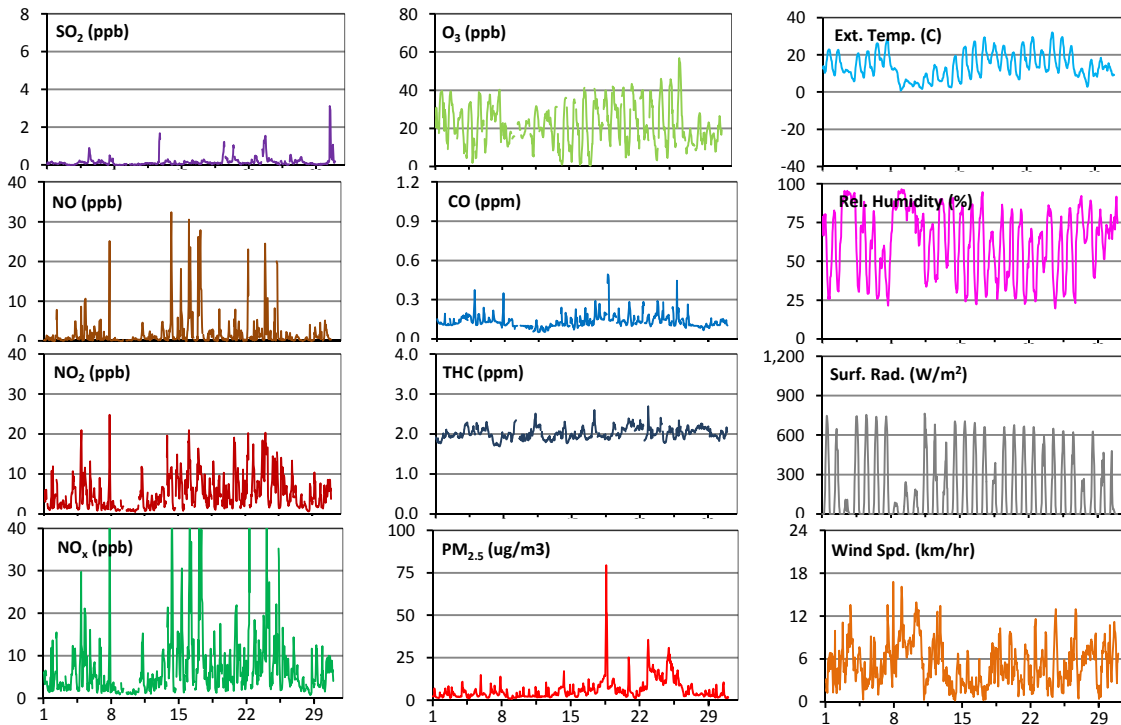
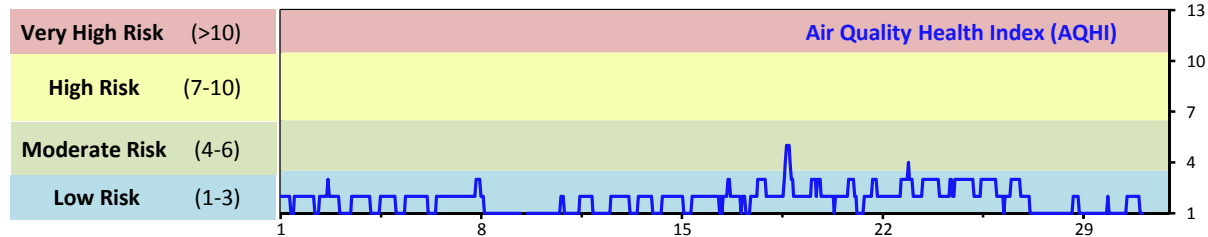


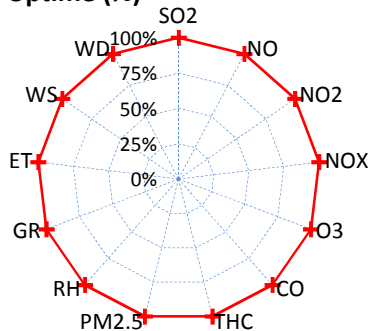
Palliser Airshed Society - September 2014 Summary Report

Continuous Sampling Results - Crescent Heights Station

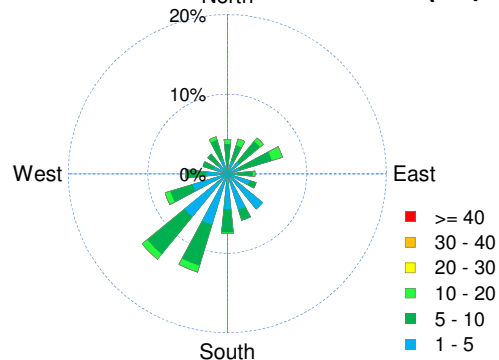
Pollutants		Month Records		24-Hour Records				1-Hour Records			
Name	Conc Unit	Avg. Conc.	Uptime	Maximum		AAAQO Objective	Exceed No.	Maximum		AAAQO Objective	Exceed No.
				Conc	Time			Conc	Time		
SO ₂	ppb	0.2	100.0%	0.6	Sep-30	48	0	3.1	Sep-30 11:00	172	0
NO	ppb	1.9	100.0%	7.8	Sep-17	-	-	32.4	Sep-14 8:00	-	-
NO ₂	ppb	5.1	100.0%	9.3	Sep-24	-	-	24.8	Sep-07 21:00	159	0
NO _x	ppb	7.0	100.0%	16.3	Sep-17	-	-	51.2	Sep-16 4:00	-	-
O ₃	ppb	22	100.0%	30	Sep-26	-	-	57	Sep-26 13:00	82	0
CO	ppm	0.1	100.0%	0.2	Sep-18	-	-	0.5	Sep-18 16:00	13	0
THC	ppm	2.0	100.0%	2.2	Sep-11	-	-	2.7	Sep-22 21:00	-	-
PM _{2.5}	µg/m ³	6	100.0%	19	Sep-18	30	0	79	Sep-18 15:00	-	-



Instrument Uptime (%)

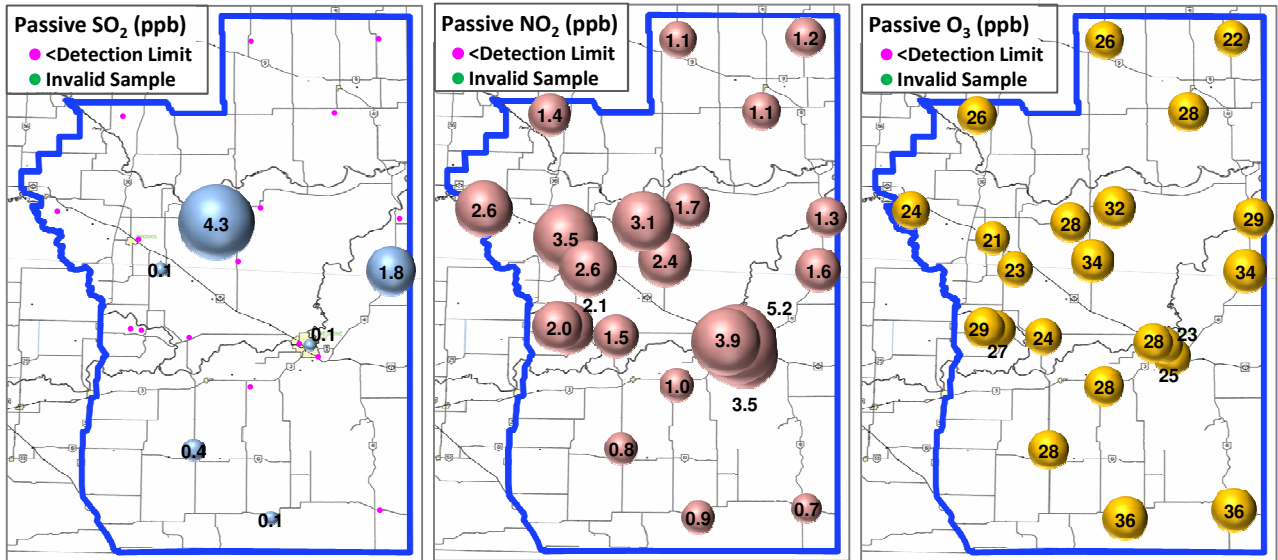


Wind Rose (km/hr)



Palliser Airshed Society - September 2014 Summary Report

Passive Sampling Results



Monthly Update

*All data has been slope, intercept, and baseline corrected. Data may change after validation process.

*The measured ambient concentrations of all parameters are within the AAAQO.

*All compliance parameters are above 90% operational. There are no operational issues to report.