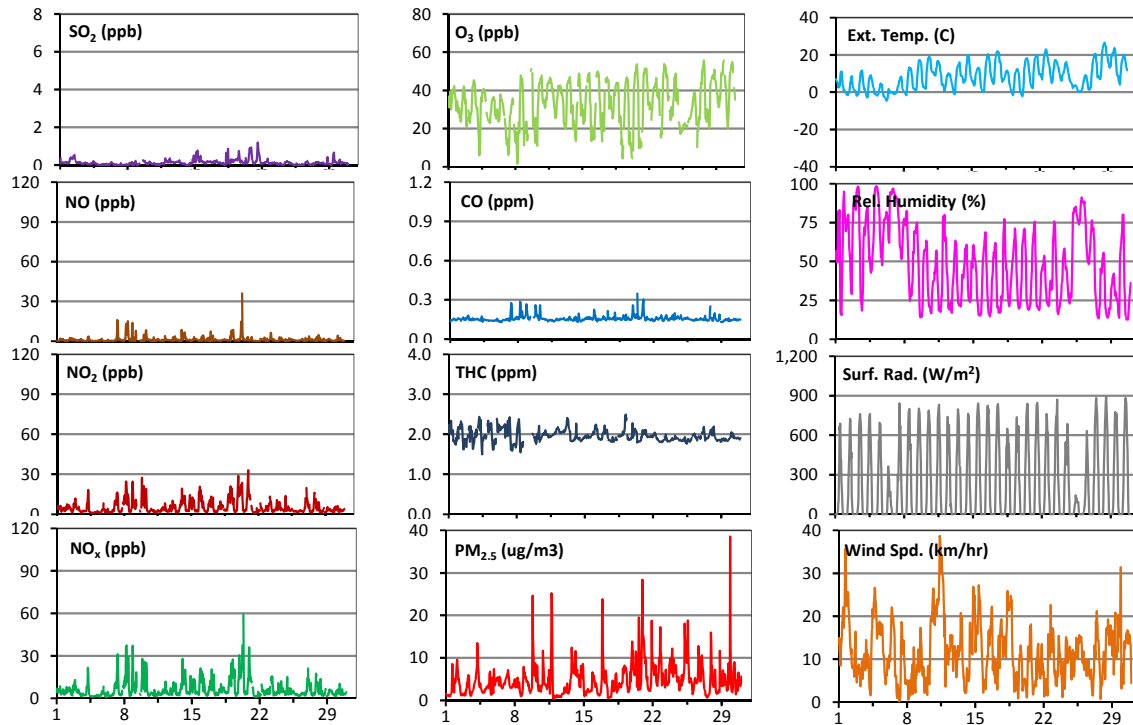
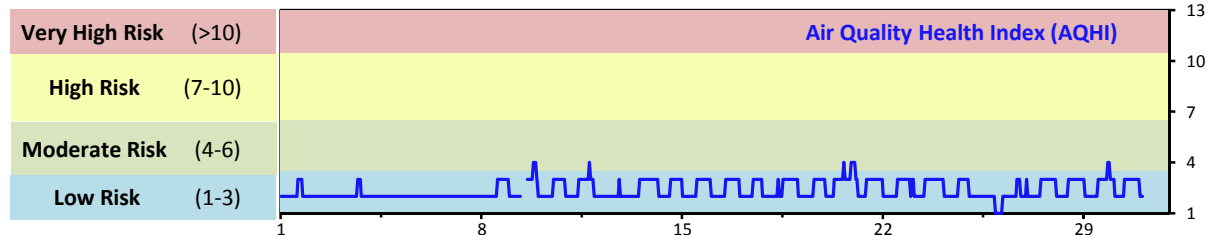


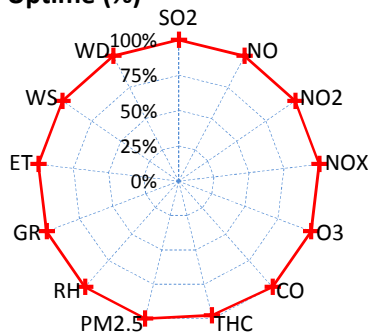
Palliser Airshed Society - April 2015 Summary Report

Continuous Sampling Results - Crescent Heights Station

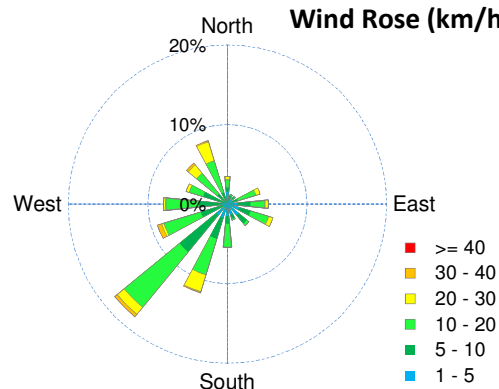
Pollutants	Month Records			24-Hour Records				1-Hour Records				
	Name	Conc Unit	Avg. Conc.	Uptime	Maximum		AAAQO Objective	Exceed No.	Maximum		AAAQO Objective	Exceed No.
					Conc	Time			Conc	Time		
SO ₂	ppb	0.1	100.0%	0.4	Apr-20	48	0	1.2	Apr-21 14:00	172	0	
NO	ppb	1.2	100.0%	4.3	Apr-8	-	-	36.1	Apr-20 8:00	-	-	
NO ₂	ppb	5.2	100.0%	12.0	Apr-20	-	-	33	Apr-20 23:00	159	0	
NO _x	ppb	6.5	100.0%	16	Apr-20	-	-	59.6	Apr-20 8:00	-	-	
O ₃	ppb	33	100.0%	43	Apr-29	-	-	56	Apr-29 20:00	82	0	
CO	ppm	0.2	100.0%	0.2	Apr-8	-	-	0.3	Apr-20 8:00	13	0	
THC	ppm	2.0	97.6%	2.1	Apr-6	-	-	2.5	Apr-19 5:00	-	-	
PM _{2.5}	µg/m ³	5	100.0%	9	Apr-20	30	0	39	Apr-29 21:00	-	-	



Instrument Uptime (%)

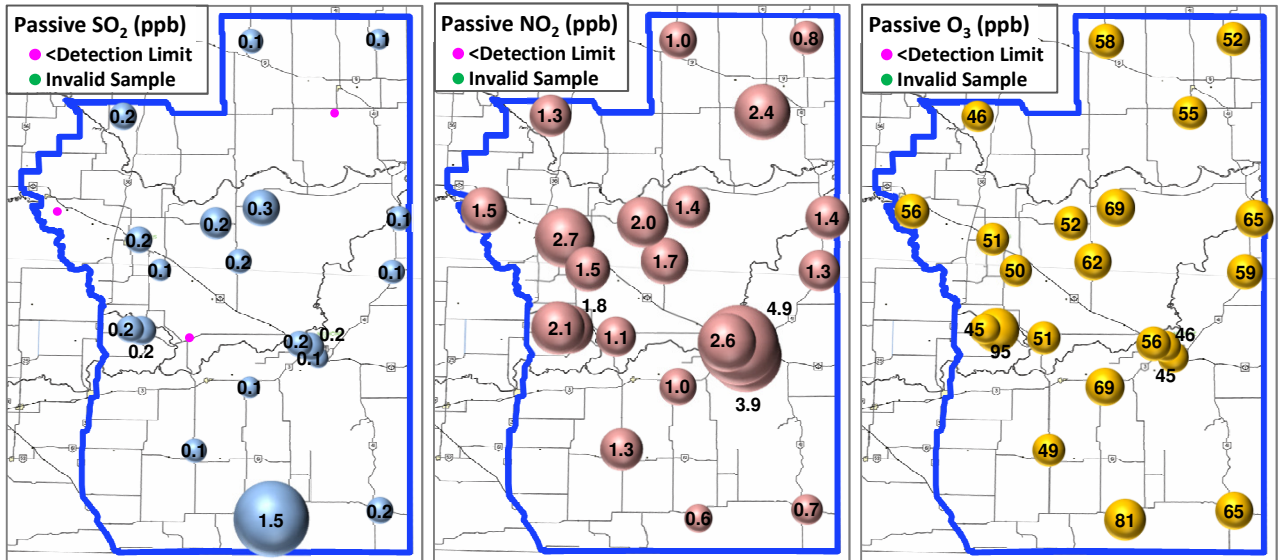


Wind Rose (km/hr)



Palliser Airshed Society - April 2015 Summary Report

Passive Sampling Results



Monthly Update

*All data has been slope, intercept, and baseline corrected. Data may change after validation process.

*The measured ambient concentrations of all parameters are within the AAAQO.

*All compliance parameters are above 90% operational.

*The THC analyzer was not operational from April 8 15:00 to April 9 14:00. 6 hours are flagged as "maintenance" while the FID was rebuilt as part of the annual routine maintenance, followed by 11 hours flagged as "maintenance" while the analyzer stabilized overnight. It was calibrated on April 9 and returned to normal operations.