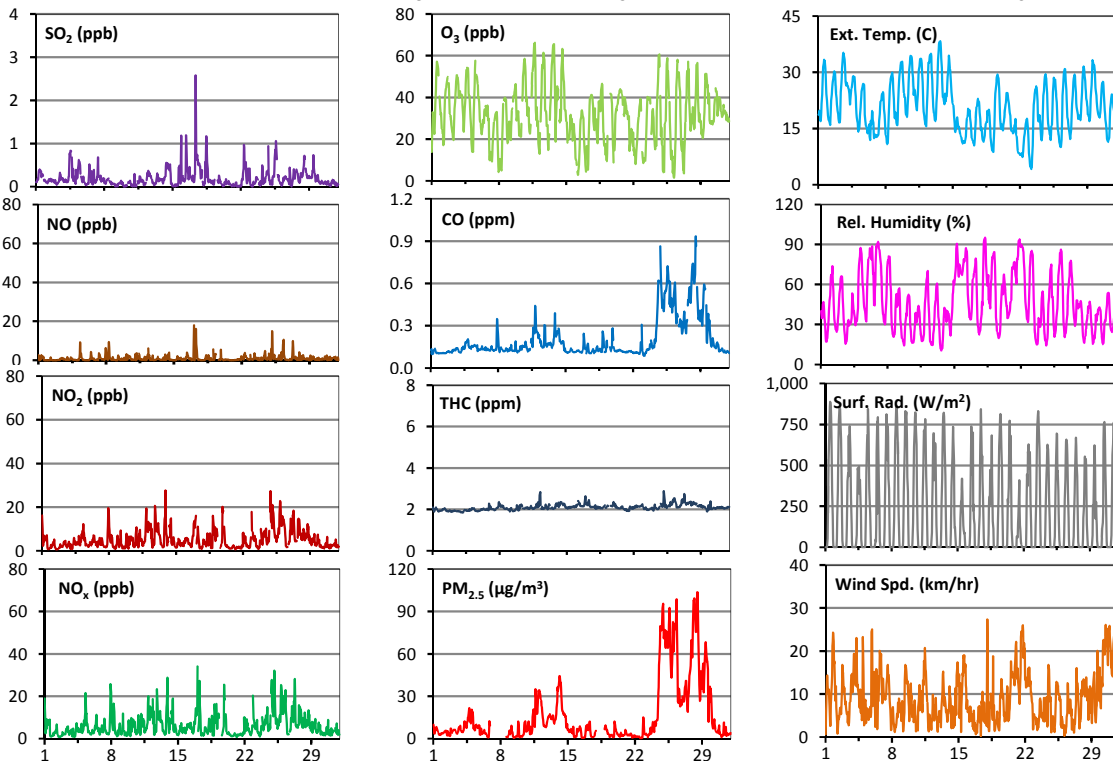
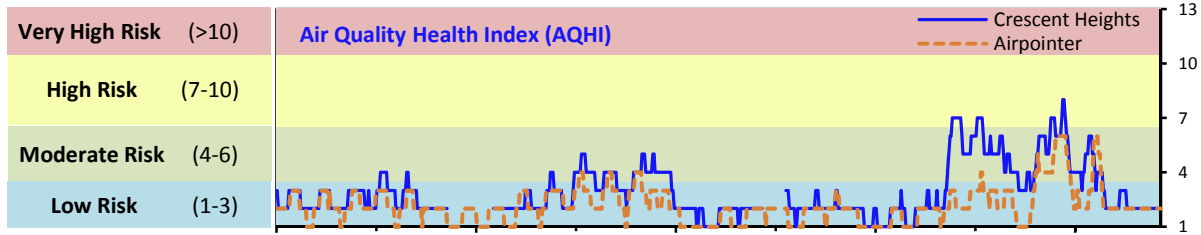


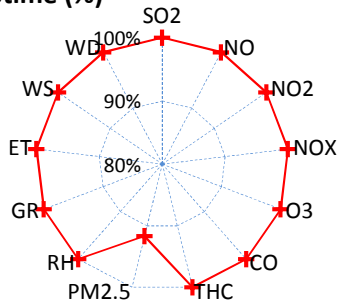
# Palliser Airshed Society - August 2015 Summary Report

## Continuous Sampling Results - Crescent Heights Station

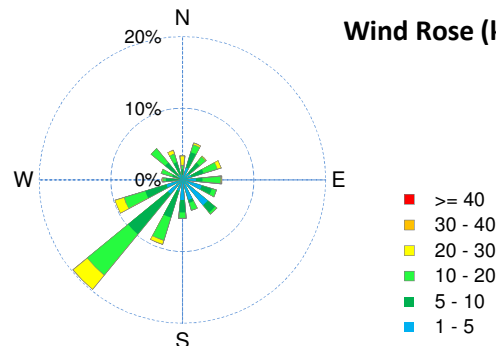
Pollutants	Month Records	24-Hour Records						1-Hour Records					
		Name	Conc Unit	Avg. Conc.	Uptime	Maximum		AAAQO Objective	Exceed No.	Maximum		AAAQO Objective	Exceed No.
						Conc	Time			Conc	Time		
SO <sub>2</sub>	ppb	< 1	100.0%	1	Aug-17	48	0	3	Aug-17 9:00	172	0		
NO	ppb	0.9	100.0%	2.4	Aug-17	-	-	18	Aug-17 2:00	-	-		
NO <sub>2</sub>	ppb	5.1	100.0%	11.6	Aug-25	-	-	27.7	Aug-13 22:00	159	0		
NO <sub>x</sub>	ppb	6.2	100.0%	13.4	Aug-25	-	-	34.1	Aug-17 2:00	-	-		
O <sub>3</sub>	ppb	32	100.0%	42	Aug-11	-	-	66	Aug-11 18:00	82	0		
CO	ppm	0.2	100.0%	0.6	Aug-28	-	-	0.9	Aug-28 13:00	13	0		
THC	ppm	2.1	100.0%	2.4	Aug-27	-	-	2.9	Aug-25 4:00	-	-		
PM <sub>2.5</sub>	µg/m <sup>3</sup>	17	91.7%	70	Aug-28	30	6	104	Aug-28 13:00	-	-		



Instrument Uptime (%)

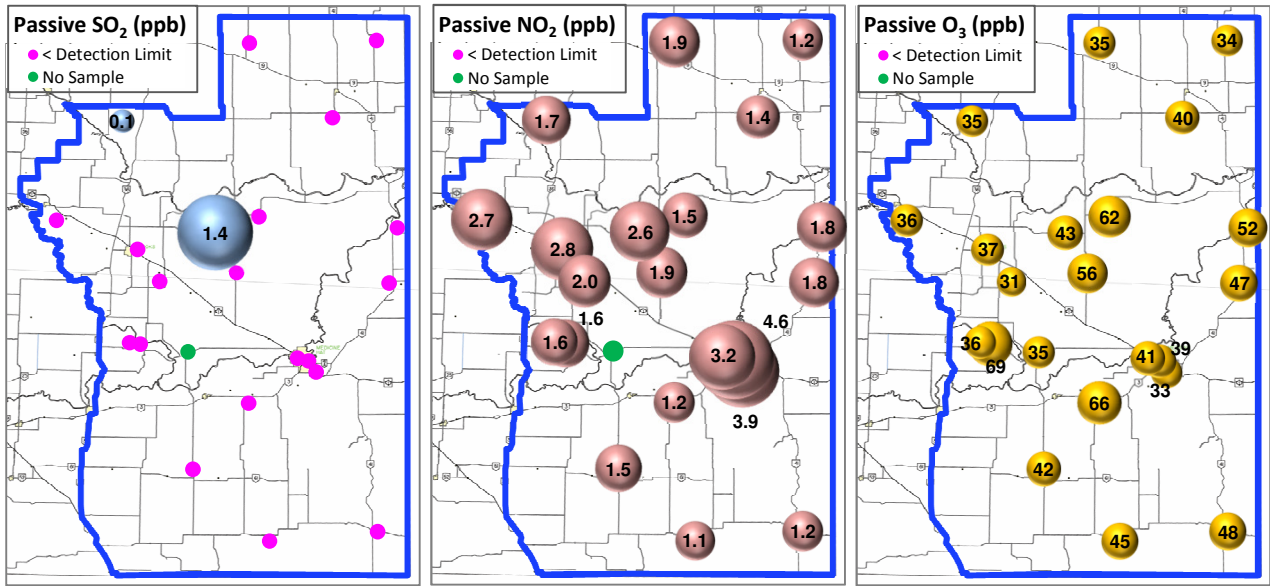


Wind Rose (km/hr)



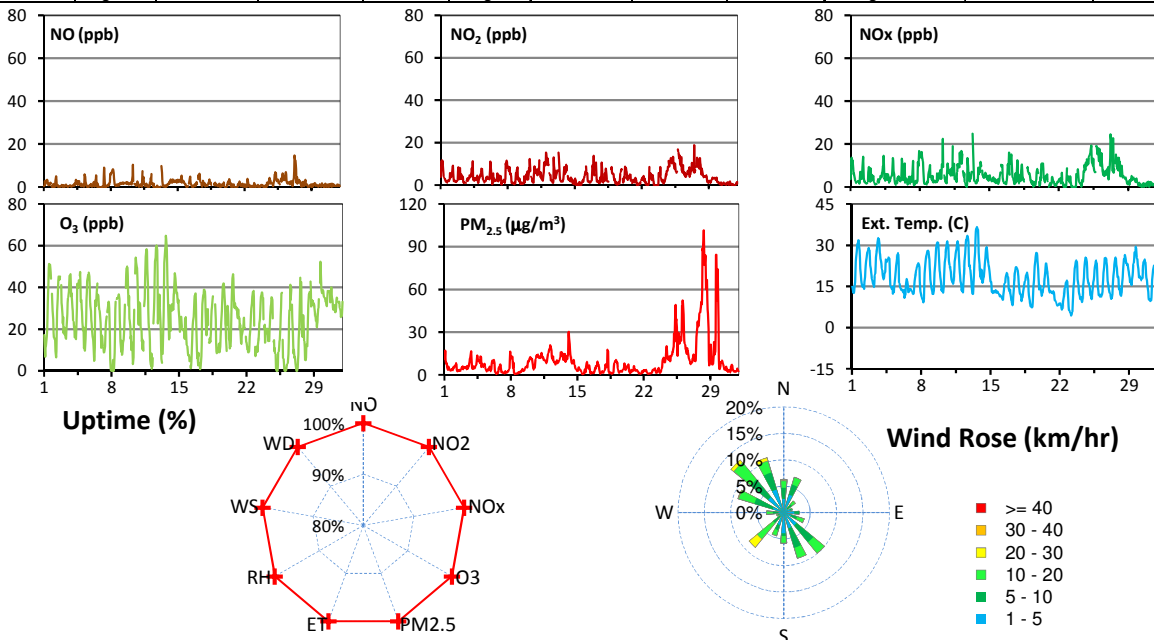
# Palliser Airshed Society - August 2015 Summary Report

## Passive Sampling Results



## Continuous Sampling Results - Brooks Station

Pollutants		Month Records		24-Hour Records				1-Hour Records			
Name	Conc Unit	Avg. Conc.	Uptime	Maximum Conc	Time	AAAQO Objective	Exceed No.	Maximum Conc	Time	AAAQO Objective	Exceed No.
NO	ppb	1.5	100.0%	4.5	Aug-27	-	-	14.7	Aug-27 6:00	-	-
NO <sub>2</sub>	ppb	4	100.0%	10.8	Aug-25	-	-	18.8	Aug-27 12:00	159	0
NO <sub>x</sub>	ppb	5.4	100.0%	13.8	Aug-25	-	-	24.8	Aug-13 8:00	-	-
O <sub>3</sub>	ppb	25	100.0%	35	Aug-30	-	-	65	Aug-13 16:00	82	0
PM <sub>2.5</sub>	ug/m3	10	100.0%	58	Aug-28	30	1	102	Aug-28 8:00	-	-



## Monthly Update

\*All data has been slope, intercept, and baseline corrected. Data may change after validation process.

\*The measured ambient concentrations of all parameters are within the AAAQO, with the exception of 6 24-hour PM<sub>2.5</sub> exceedances at Crescent Heights, and 1 24-hour PM<sub>2.5</sub> exceedance at Brooks (August 24-29). These are attributed to wildfire smoke in the region.

\*All compliance parameters are above 90% operational. The PM<sub>2.5</sub> analyzer at the Crescent Heights station malfunctioned intermittently throughout the month due to an electronics issue.