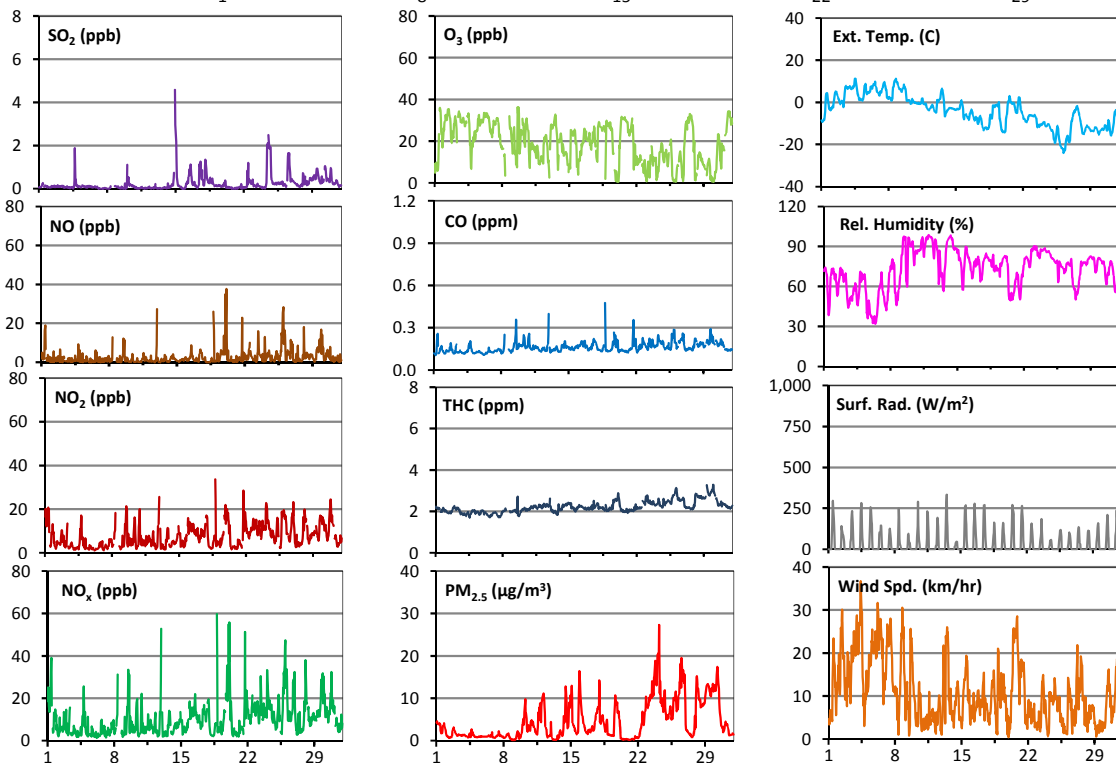
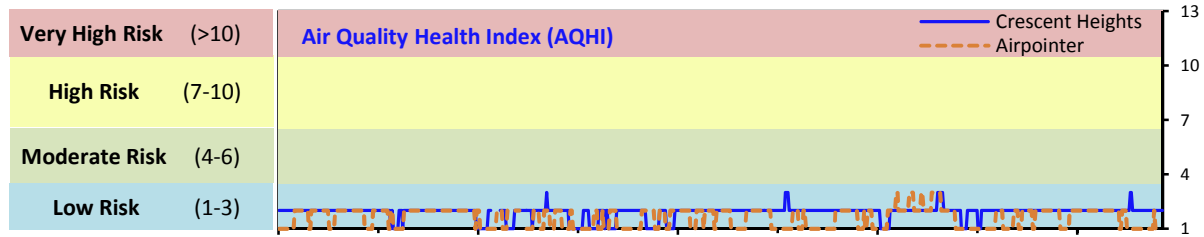


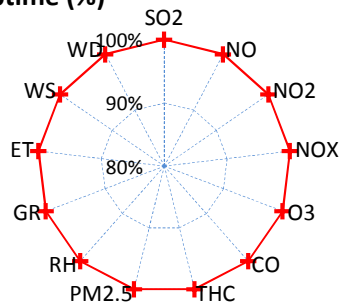
Palliser Airshed Society - December 2015 Summary Report

Continuous Sampling Results - Crescent Heights Station

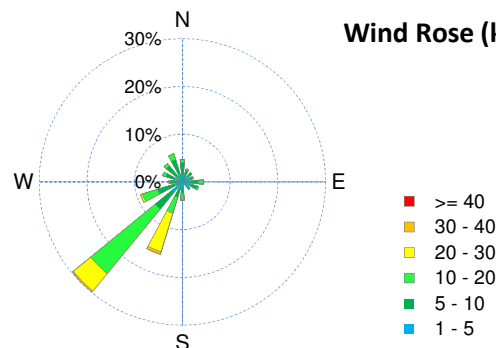
Pollutants	Month Records	24-Hour Records						1-Hour Records					
		Name	Conc Unit	Avg. Conc.	Uptime	Maximum		AAAQO Objective	Exceed No.	Maximum		AAAQO Objective	Exceed No.
						Conc	Time			Conc	Time		
SO ₂	ppb	< 1	100.0%	1	Dec-24	48	0	5	Dec-14 23:00	172	0		
NO	ppb	2.6	100.0%	6.6	Dec-25	-	-	37.6	Dec-20 3:00	-	-		
NO ₂	ppb	7.6	100.0%	13.4	Dec-30	-	-	33.7	Dec-18 19:00	159	0		
NO _x	ppb	10.3	100.0%	18.5	Dec-26	-	-	59.8	Dec-18 19:00	-	-		
O ₃	ppb	19	100.0%	30	Dec-6	-	-	36	Dec-09 16:00	82	0		
CO	ppm	0.2	100.0%	0.2	Dec-29	-	-	0.5	Dec-18 19:00	13	0		
THC	ppm	2.2	100.0%	2.9	Dec-29	-	-	3.3	Dec-30 0:00	-	-		
PM _{2.5}	µg/m ³	5	100.0%	12	Dec-26	30	0	27	Dec-24 6:00	-	-		



Instrument Uptime (%)

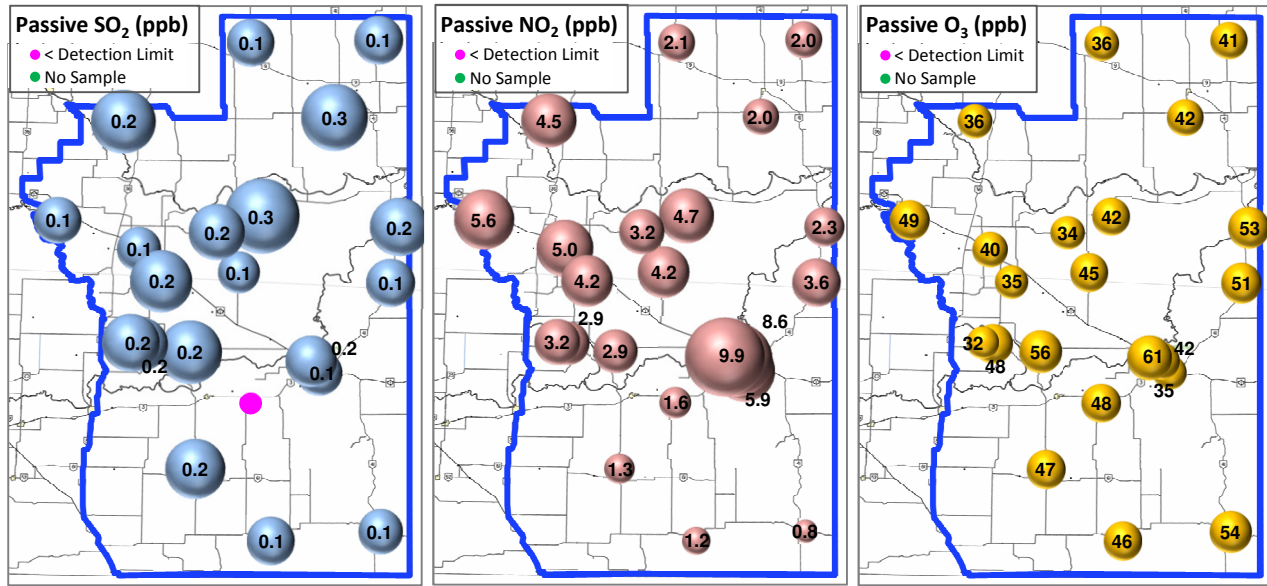


Wind Rose (km/hr)



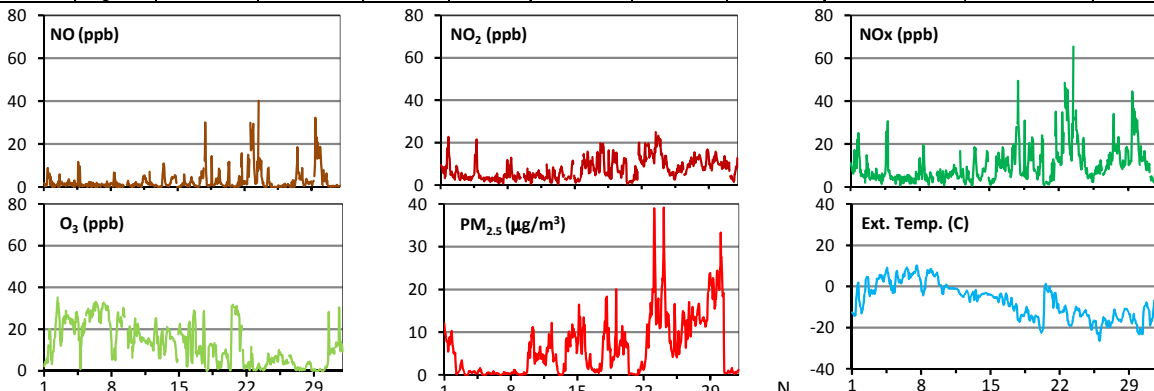
Palliser Airshed Society - December 2015 Summary Report

Passive Sampling Results

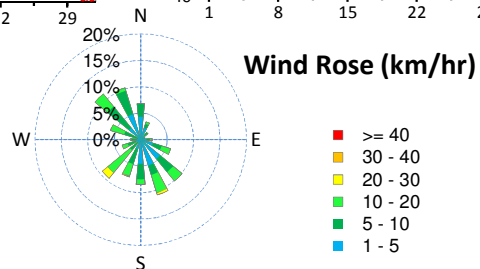
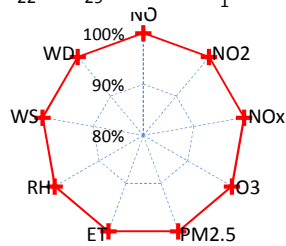


Continuous Sampling Results - Brooks Station

Pollutants		Month Records		24-Hour Records				1-Hour Records			
Name	Conc Unit	Avg. Conc.	Uptime	Maximum		AAAQO	Exceed	Maximum		AAAQO	Exceed
				Conc	Time	Objective	No.	Conc	Time	Objective	No.
NO	ppb	2.8	100.0%	13.5	Dec-29	-	-	40.2	Dec-23 12:00	-	-
NO ₂	ppb	7.4	100.0%	17.9	Dec-23	-	-	24.9	Dec-23 12:00	159	0
NO _x	ppb	10.2	100.0%	26.8	Dec-22	-	-	65.4	Dec-23 12:00	-	-
O ₃	ppb	13	100.0%	29	Dec-6	-	-	35	Dec-02 10:00	82	0
PM _{2.5}	ug/m3	6	100.0%	20	Dec-29	30	0	39	Dec-24 3:00	-	-



Uptime (%)



Monthly Update

*All data has been slope, intercept, and baseline corrected. Data may change after validation process.

*The measured ambient concentrations of all parameters are within the AAAQO.

*All compliance parameters are above 90% operational. There are no operational issues to report.