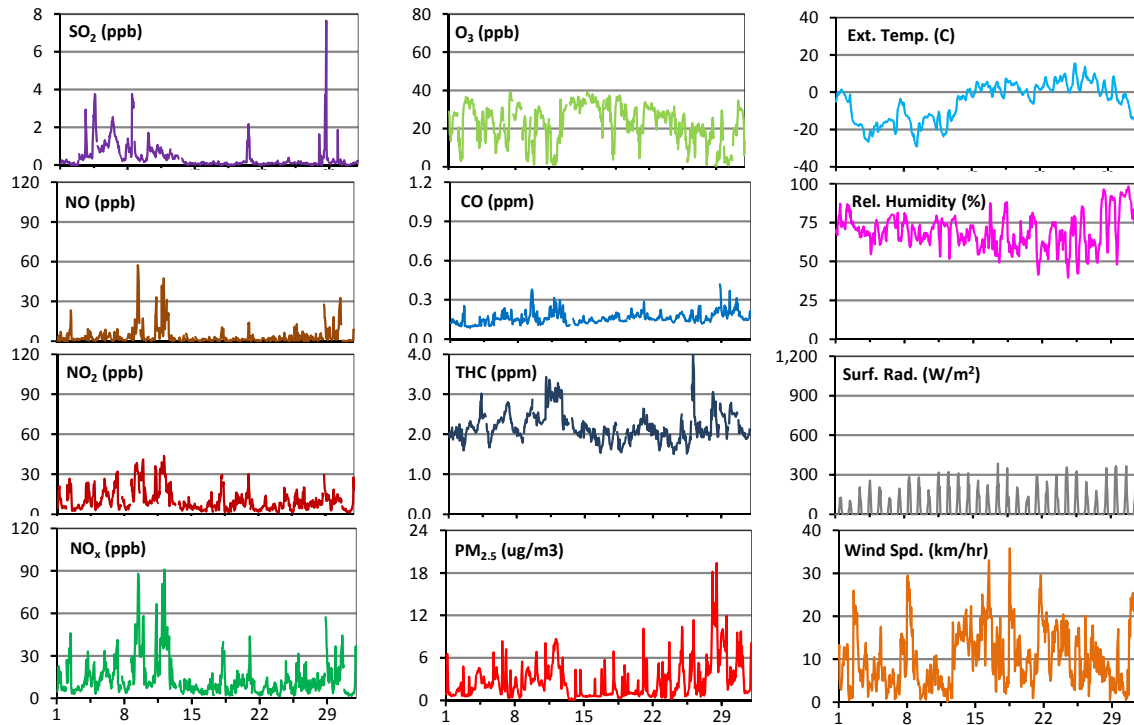
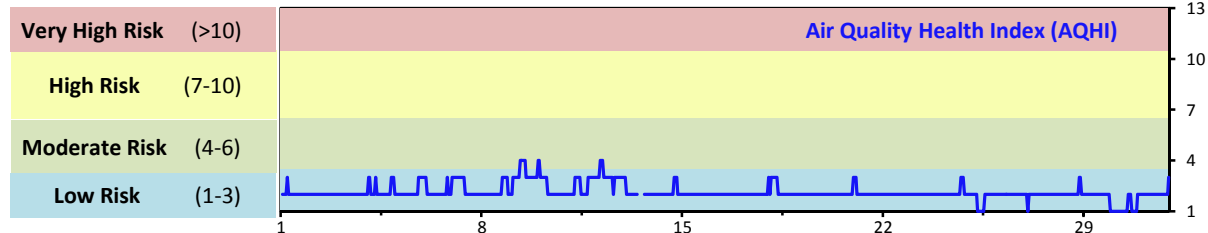


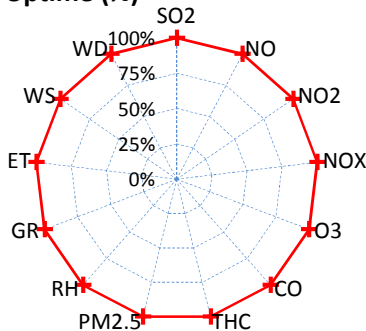
Palliser Airshed Society - January 2015 Summary Report

Continuous Sampling Results - Crescent Heights Station

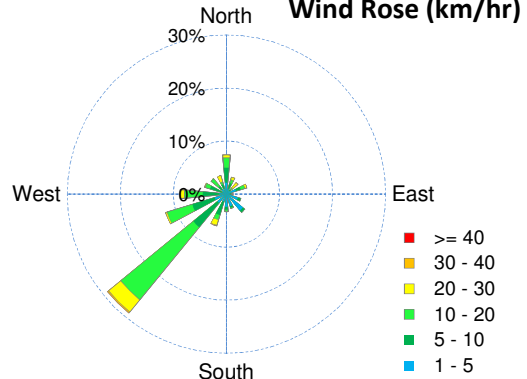
Pollutants		Month Records		24-Hour Records				1-Hour Records			
Name	Conc Unit	Avg. Conc.	Uptime	Maximum		AAAQO Objective	Exceed No.	Maximum		AAAQO Objective	Exceed No.
				Conc	Time			Conc	Time		
SO ₂	ppb	0.4	100.0%	1.7	Jan-6	48	0	7.6	Jan-28 17:00	172	0
NO	ppb	3.5	100.0%	16.4	Jan-9	-	-	57.4	Jan-09 11:00	-	-
NO ₂	ppb	10.3	100.0%	30.2	Jan-9	-	-	43.8	Jan-12 4:00	159	0
NO _x	ppb	13.9	100.0%	46.6	Jan-9	-	-	91	Jan-12 4:00	-	-
O ₃	ppb	23	100.0%	36	Jan-15	-	-	39	Jan-07 12:00	82	0
CO	ppm	0.2	100.0%	0.2	Jan-28	-	-	0.4	Jan-28 21:00	13	0
THC	ppm	2.2	100.0%	3.0	Jan-11	-	-	4.1	Jan-26 3:00	-	-
PM _{2.5}	µg/m ³	3	100.0%	11	Jan-28	30	0	19	Jan-28 12:00	-	-



Instrument Uptime (%)

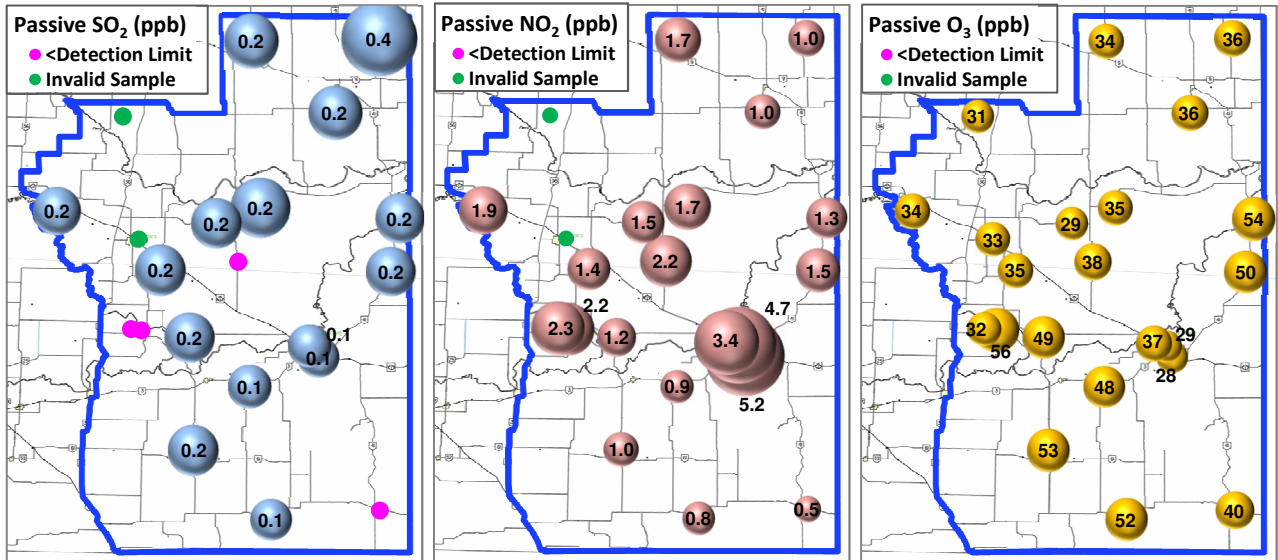


Wind Rose (km/hr)



Palliser Airshed Society - January 2015 Summary Report

Passive Sampling Results



Monthly Update

*All data has been slope, intercept, and baseline corrected. Data may change after validation process.

*The measured ambient concentrations of all parameters are within the AAAQO.

*All compliance parameters are above 90% operational. There are no operational issues to report.

*SO₂/NO₂ passive sampler devices were missing at Sites 6 and 11.