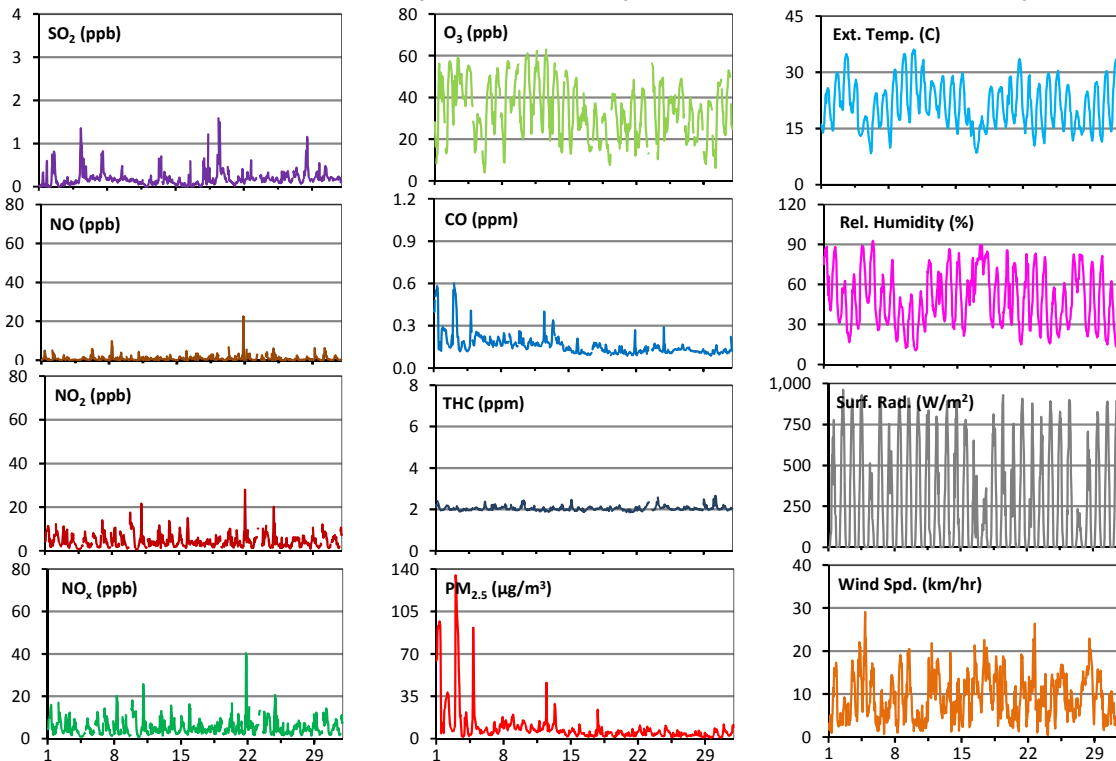
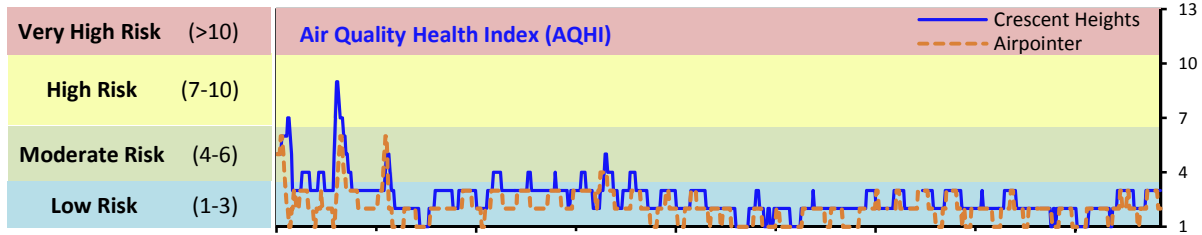


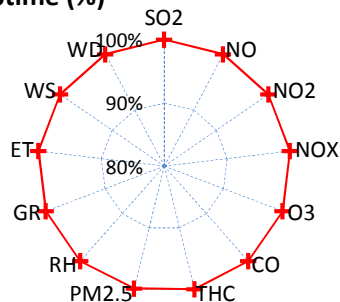
# Palliser Airshed Society - July 2015 Summary Report

## Continuous Sampling Results - Crescent Heights Station

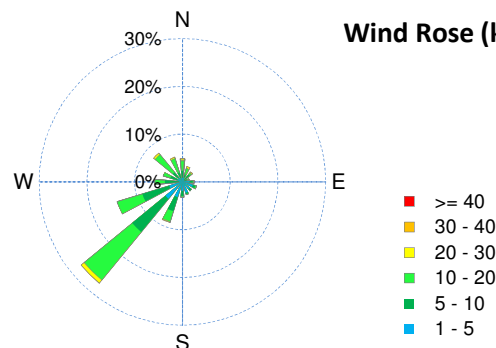
Pollutants	Month Records	24-Hour Records						1-Hour Records					
		Name	Conc Unit	Avg. Conc.	Uptime	Maximum		AAAQO Objective	Exceed No.	Maximum		AAAQO Objective	Exceed No.
						Conc	Time			Conc	Time		
SO <sub>2</sub>	ppb	< 1	100.0%	< 1	Jul-19	48	0	2	Jul-19 10:00	172	0		
NO	ppb	0.9	100.0%	2.4	Jul-21	-	-	22.5	Jul-21 21:00	-	-		
NO <sub>2</sub>	ppb	4.4	100.0%	6.5	Jul-24	-	-	28	Jul-21 22:00	159	0		
NO <sub>x</sub>	ppb	5.3	100.0%	8.1	Jul-21	-	-	40.4	Jul-21 21:00	-	-		
O <sub>3</sub>	ppb	34	100.0%	48	Jul-3	-	-	63	Jul-12 15:00	82	0		
CO	ppm	0.2	100.0%	0.3	Jul-1	-	-	0.6	Jul-03 3:00	13	0		
THC	ppm	2.0	100.0%	2.2	Jul-24	-	-	2.7	Jul-30 6:00	-	-		
PM <sub>2.5</sub>	µg/m <sup>3</sup>	9	99.9%	48	Jul-1	30	2	135	Jul-03 1:00	-	-		



Instrument Uptime (%)

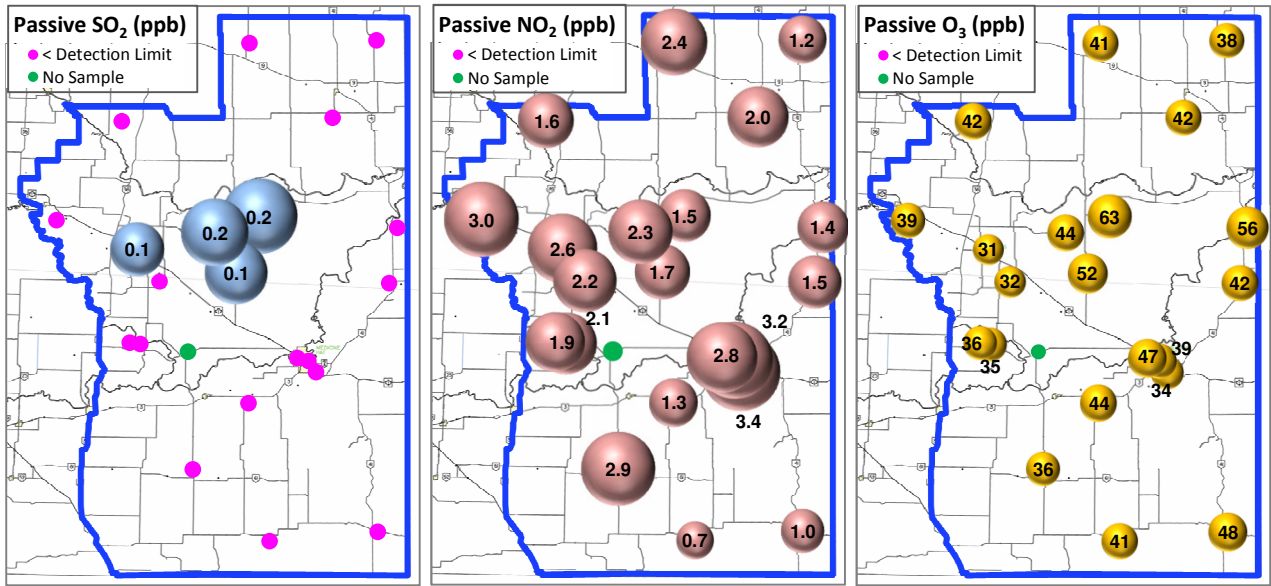


Wind Rose (km/hr)



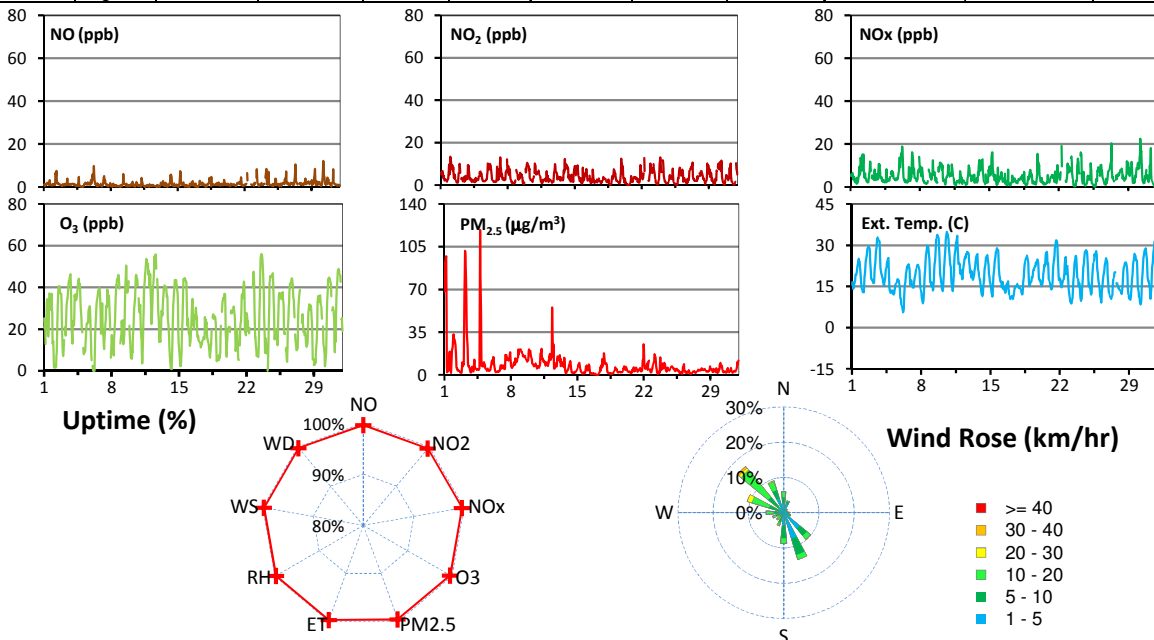
# Palliser Airshed Society - July 2015 Summary Report

## Passive Sampling Results



## Continuous Sampling Results - Brooks Station

Pollutants		Month Records		24-Hour Records				1-Hour Records			
Name	Conc Unit	Avg. Conc.	Uptime	Maximum Conc	Time	AAAQO Objective	Exceed No.	Maximum Conc	Time	AAAQO Objective	Exceed No.
NO	ppb	1.5	99.6%	3	Jul-30	-	-	12.2	Jul-30 6:00	-	-
NO <sub>2</sub>	ppb	3.9	99.6%	5.5	Jul-10	-	-	13.3	Jul-02 1:00	159	0
NOx	ppb	5.1	99.6%	7.7	Jul-30	-	-	22.5	Jul-30 6:00	-	-
O <sub>3</sub>	ppb	26	99.6%	38	Jul-12	-	-	56	Jul-23 14:00	82	0
PM <sub>2.5</sub>	ug/m3	8	99.6%	30	Jul-1	30	0	119	Jul-04 19:00	-	-



## Monthly Update

\*All data has been slope, intercept, and baseline corrected. Data may change after validation process.

\*The measured ambient concentrations of all parameters are within the AAAQO, with the exception of two 24-hour PM<sub>2.5</sub> exceedances at Crescent Heights (July 1, 3) These are attributed to wildfire smoke in the region.

\*All compliance parameters are above 90% operational. There are 3 hours of data for all parameters at the Brooks station flagged as "power failure" on July 27, due to a power disruption.