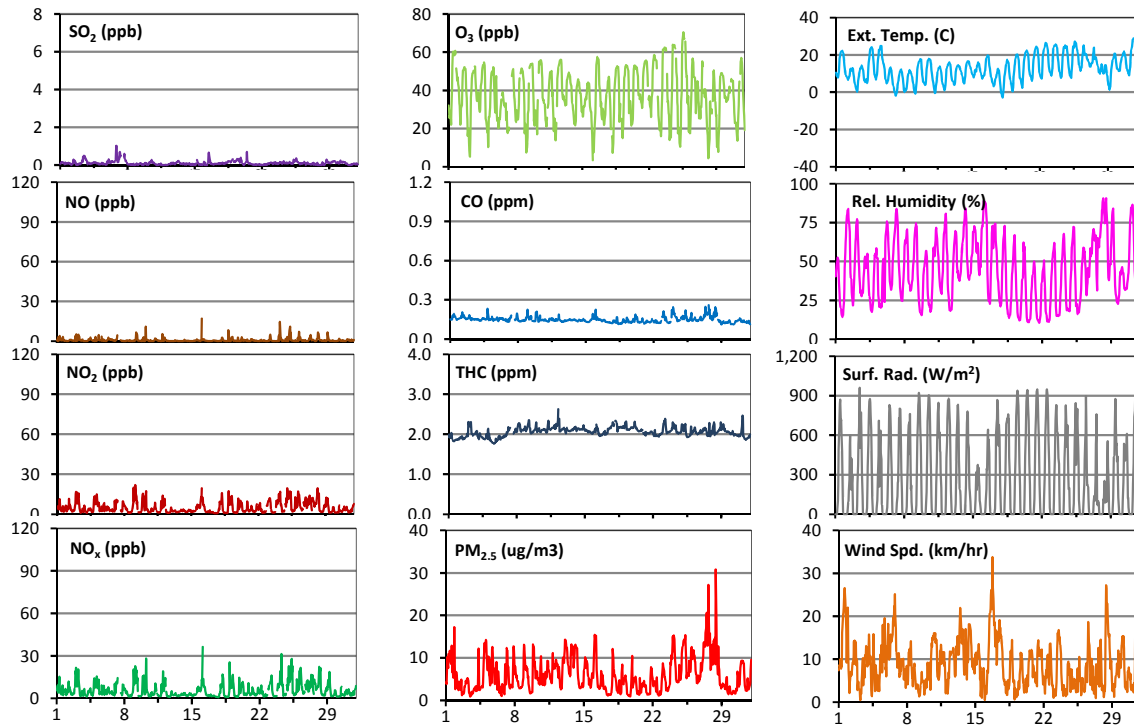
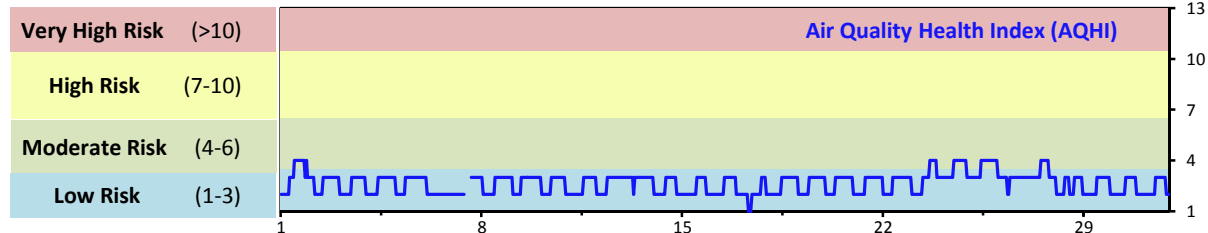


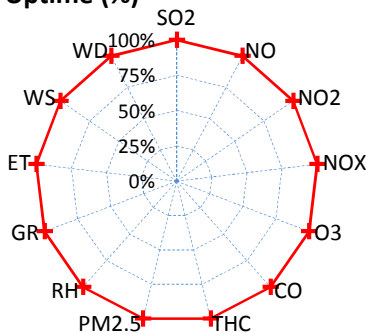
Palliser Airshed Society - May 2015 Summary Report

Continuous Sampling Results - Crescent Heights Station

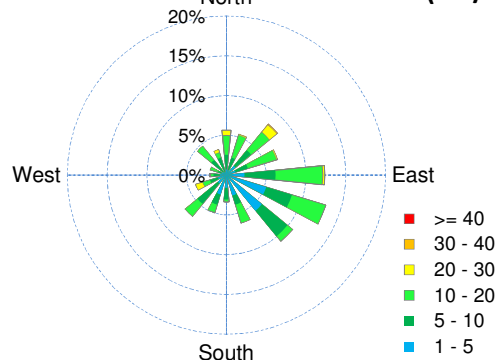
Pollutants	Month Records			24-Hour Records				1-Hour Records				
	Name	Conc Unit	Avg. Conc.	Uptime	Maximum		AAAQO Objective	Exceed No.	Maximum		AAAQO Objective	Exceed No.
					Conc	Time			Conc	Time		
SO ₂	ppb	0.1	100.0%	0.3	May-6	48	0	1.0	May-06 21:00	172	0	
NO	ppb	0.8	100.0%	1.9	May-25	-	-	17.1	May-16 3:00	-	-	
NO ₂	ppb	4.9	100.0%	9.3	May-25	-	-	21.9	May-09 4:00	159	0	
NO _x	ppb	5.7	100.0%	11.2	May-25	-	-	36.5	May-16 3:00	-	-	
O ₃	ppb	38	100.0%	45	May-21	-	-	70	May-25 14:00	82	0	
CO	ppm	0.1	100.0%	0.2	May-27	-	-	0.3	May-27 17:00	13	0	
THC	ppm	2.1	100.0%	2.2	May-18	-	-	2.6	May-12 7:00	-	-	
PM _{2.5}	µg/m ³	6	100.0%	14	May-27	30	0	31	May-28 10:00	-	-	



Instrument Uptime (%)

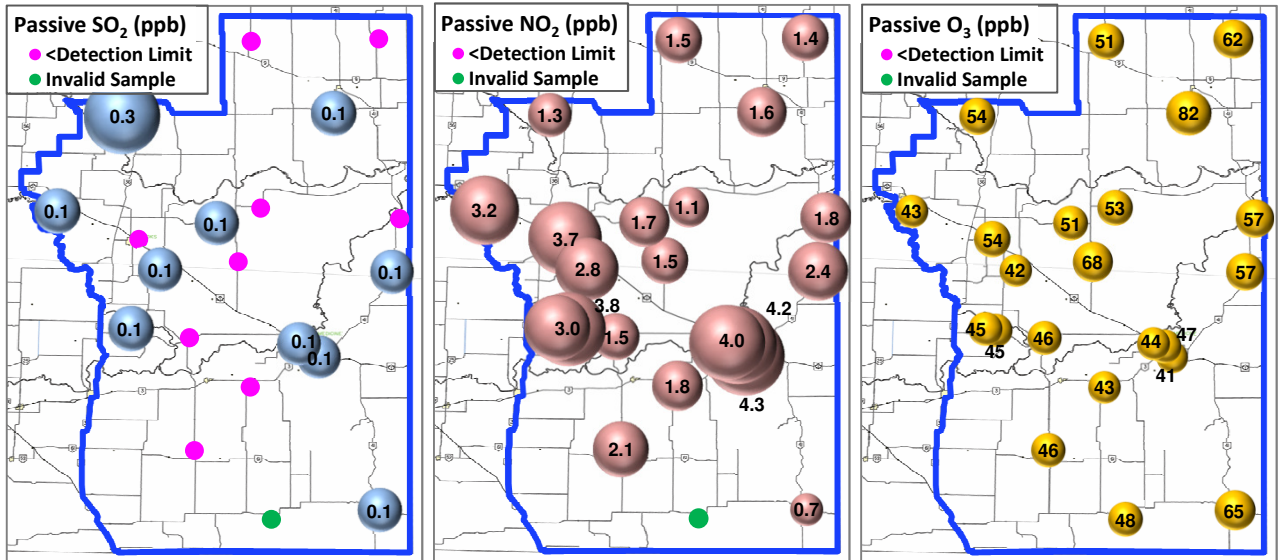


Wind Rose (km/hr)



Palliser Airshed Society - May 2015 Summary Report

Passive Sampling Results



Monthly Update

- *All data has been slope, intercept, and baseline corrected. Data may change after validation process.
- *The measured ambient concentrations of all parameters are within the AAAQO.
- *All compliance parameters are above 90% operational, there are no operational issues to report.
- *The SO₂/NO₂ passive sampler for Site 16 was missing.