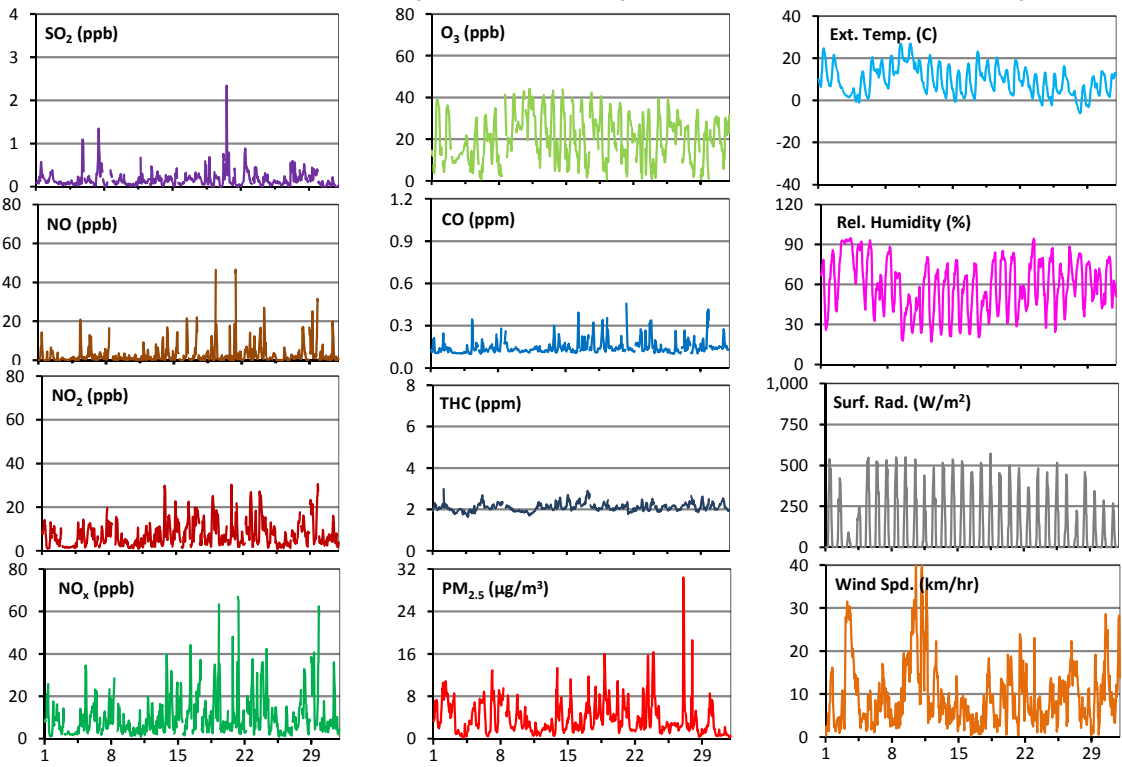
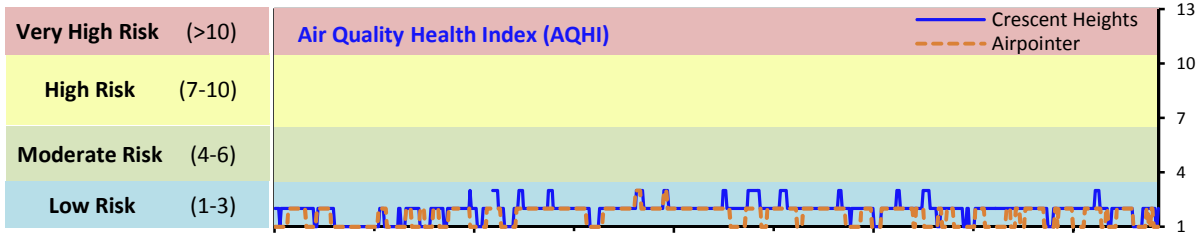


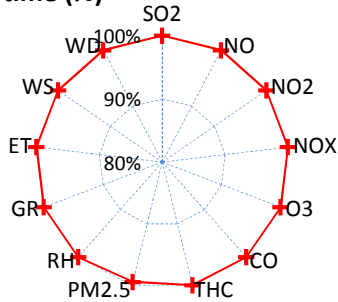
Palliser Airshed Society - October 2015 Summary Report

Continuous Sampling Results - Crescent Heights Station

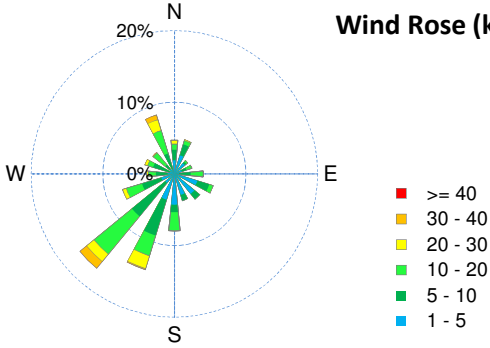
Pollutants		Month Records		24-Hour Records				1-Hour Records			
Name	Conc Unit	Avg. Conc.	Uptime	Maximum		AAAQO	Exceed No.	Maximum		AAAQO	Exceed No.
				Conc	Time	Objective		Conc	Time	Objective	
SO ₂	ppb	< 1	100.0%	< 1	Oct-7	48	0	2	Oct-20 14:00	172	0
NO	ppb	2.8	100.0%	7.9	Oct-29	-	-	46.5	Oct-19 8:00	-	-
NO ₂	ppb	7.3	100.0%	14.4	Oct-29	-	-	30.6	Oct-29 20:00	159	0
NO _x	ppb	10.2	100.0%	22.4	Oct-29	-	-	67.0	Oct-21 8:00	-	-
O ₃	ppb	20	100.0%	32	Oct-11	-	-	44	Oct-11 5:00	82	0
CO	ppm	0.1	100.0%	0.2	Oct-29	-	-	0.5	Oct-21 8:00	13	0
THC	ppm	2.1	100.0%	2.4	Oct-17	-	-	3.0	Oct-02 4:00	-	-
PM _{2.5}	µg/m ³	4	99.5%	7	Oct-23	30	0	30	Oct-27 2:00	-	-



Instrument Uptime (%)

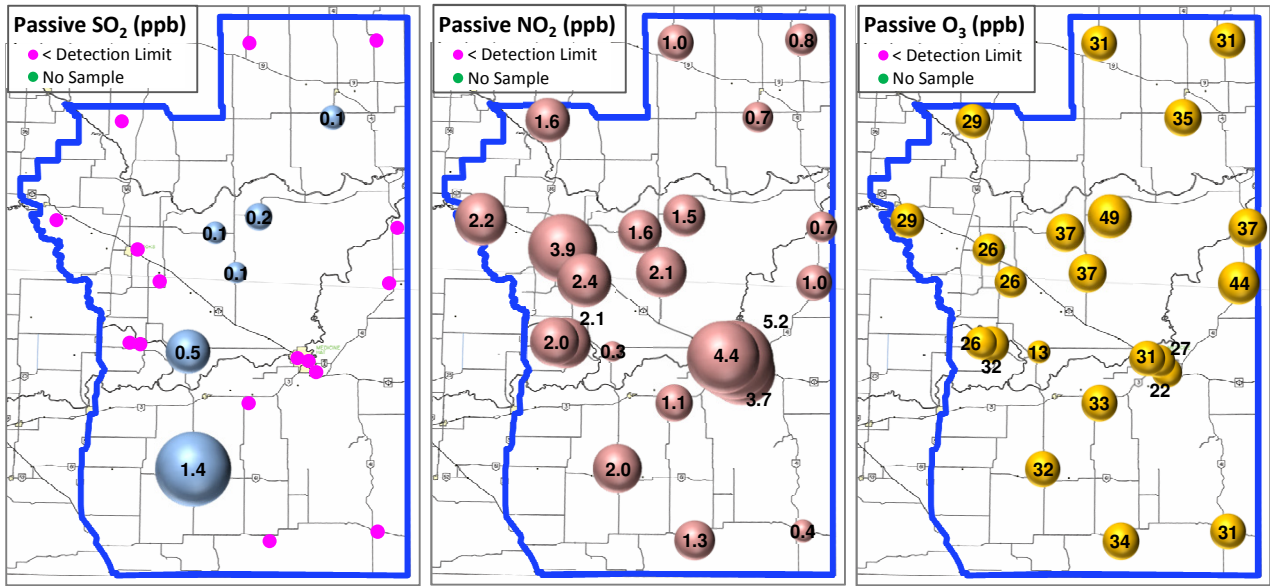


Wind Rose (km/hr)



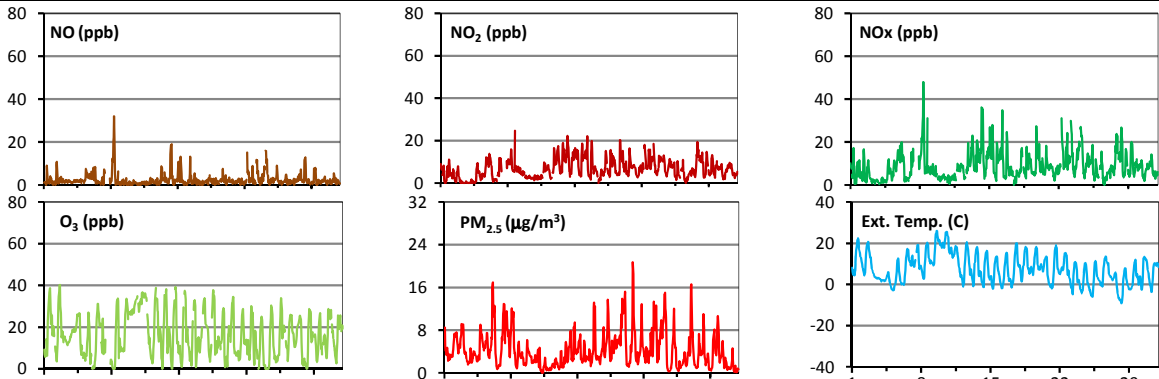
Palliser Airshed Society - October 2015 Summary Report

Passive Sampling Results

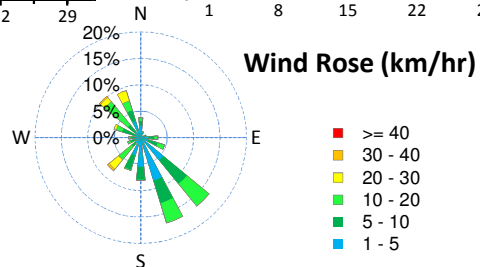
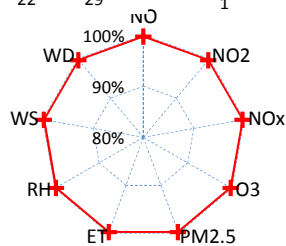


Continuous Sampling Results - Brooks Station

Pollutants		Month Records		24-Hour Records				1-Hour Records			
Name	Conc Unit	Avg. Conc.	Uptime	Maximum		AAQO	Exceed	Maximum		AAQO	Exceed
				Conc	Time	Objective	No.	Conc	Time	Objective	No.
NO	ppb	2.5	99.7%	6.6	Oct-8	-	-	32.0	Oct-08 9:00	-	-
NO ₂	ppb	6.7	99.7%	11.5	Oct-14	-	-	24.6	Oct-08 19:00	159	0
NOx	ppb	8.9	99.7%	15.9	Oct-8	-	-	48.1	Oct-08 9:00	-	-
O ₃	ppb	16	99.7%	30	Oct-10	-	-	40	Oct-02 16:00	82	0
PM _{2.5}	ug/m3	4	99.7%	8	Oct-19	30	0	21	Oct-20 21:00	-	-



Uptime (%)



Monthly Update

*All data has been slope, intercept, and baseline corrected. Data may change after validation process.

*The measured ambient concentrations of all parameters are within the AAAQO.

*All compliance parameters are above 90% operational. The original PM_{2.5} analyzer was re-installed at Crescent Heights on Oct 8, following repairs to the circuit board (damage caused by water intrusion). The UPS was installed on the airpointer on Oct 7.