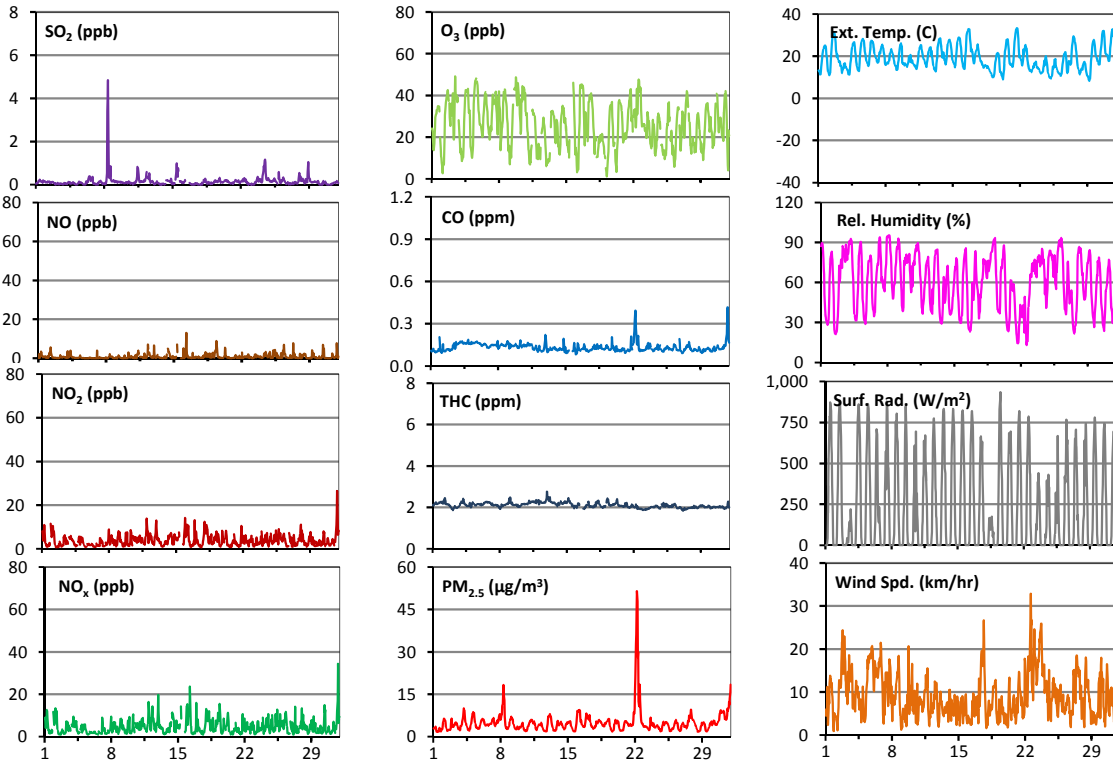
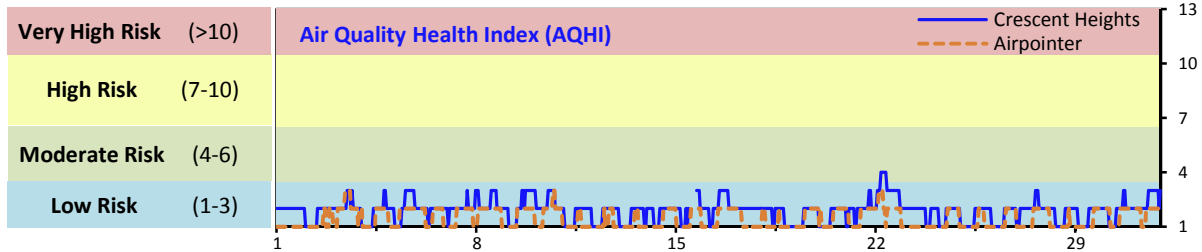


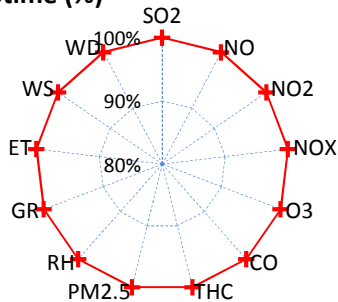
Palliser Airshed Society - August 2016 Summary Report

Continuous Sampling Results - Crescent Heights Station

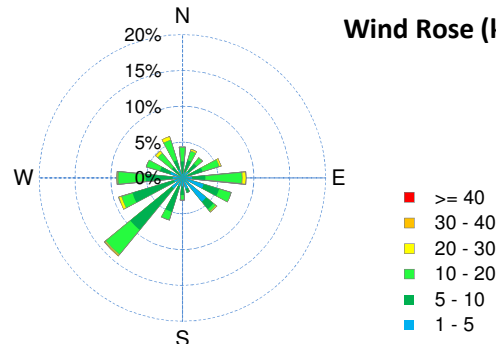
Pollutants	Month Records	24-Hour Records						1-Hour Records					
		Name	Conc Unit	Avg. Conc.	Uptime	Maximum		AAAQO Objective	Exceed No.	Maximum		AAAQO Objective	Exceed No.
						Conc	Time			Conc	Time		
SO ₂	ppb	< 1	100.0%	1	Aug-8	48	0	5	Aug-08 10:00	172	0		
NO	ppb	0.8	100.0%	1.8	Aug-19	-	-	13.1	Aug-16 7:00	-	-		
NO ₂	ppb	3.7	100.0%	6.3	Aug-31	-	-	26.6	Aug-31 20:00	159	0		
NO _x	ppb	4.6	100.0%	7.3	Aug-31	-	-	34.4	Aug-31 20:00	-	-		
O ₃	ppb	26	100.0%	35	Aug-22	-	-	49	Aug-03 11:00	82	0		
CO	ppm	0.1	100.0%	0.2	Aug-22	-	-	0.4	Aug-31 21:00	13	0		
THC	ppm	2.1	100.0%	2.3	Aug-12	-	-	2.8	Aug-12 23:00	-	-		
PM _{2.5}	µg/m ³	5	100.0%	18	Aug-22	30	0	52	Aug-22 6:00	-	-		



Instrument Uptime (%)

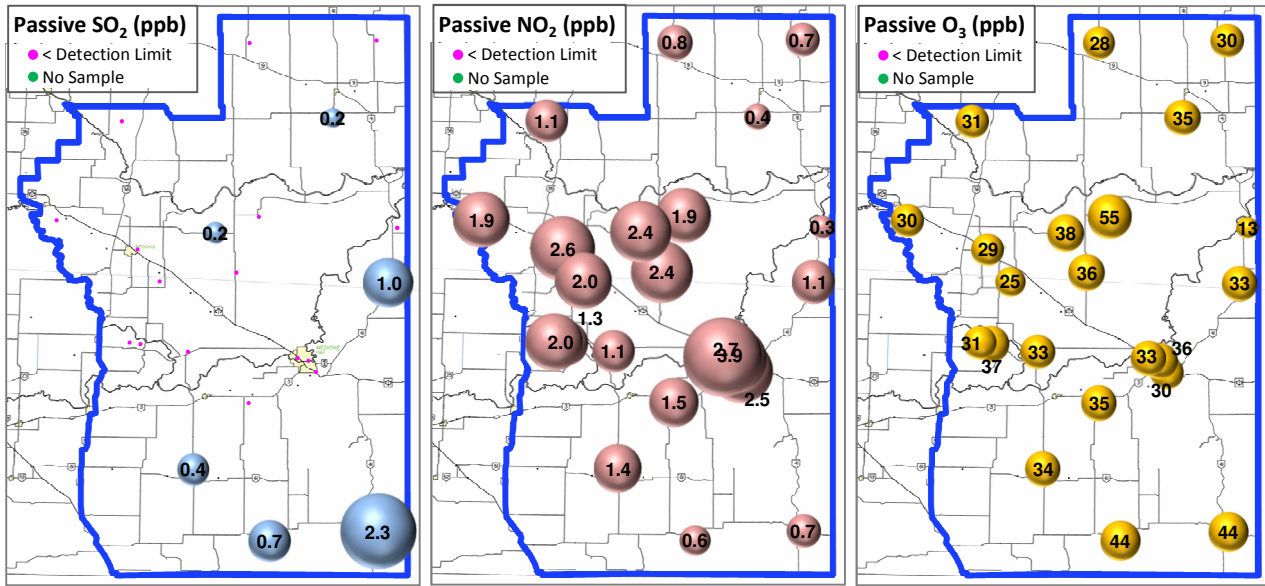


Wind Rose (km/hr)



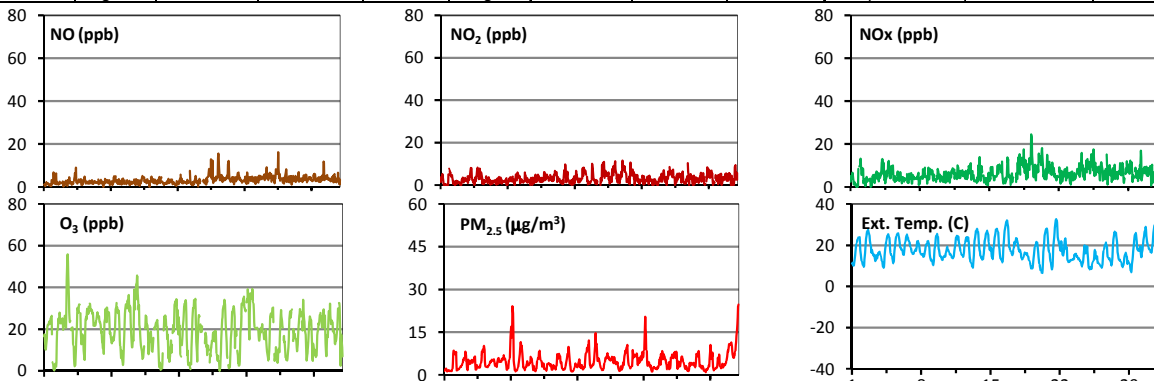
Palliser Airshed Society - August 2016 Summary Report

Passive Sampling Results

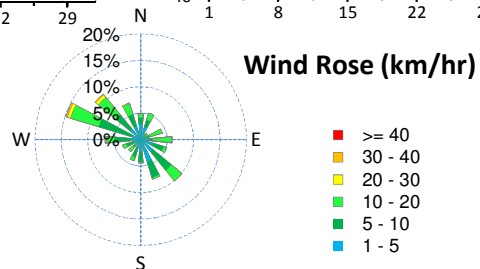
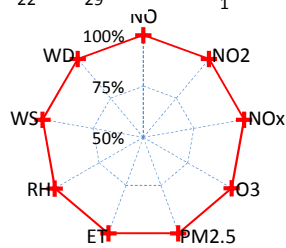


Continuous Sampling Results - Brooks Station

Pollutants		Month Records		24-Hour Records				1-Hour Records			
Name	Conc Unit	Avg. Conc.	Uptime	Maximum		AAAQO Objective	Exceed No.	Maximum		AAAQO Objective	Exceed No.
				Conc	Time			Conc	Time		
NO	ppb	3.2	100.0%	5.4	Aug-25	-	-	16.2	Aug-25 13:00	-	-
NO ₂	ppb	3.1	100.0%	5.1	Aug-19	-	-	11.5	Aug-20 0:00	159	0
NO _x	ppb	6.3	100.0%	10.3	Aug-19	-	-	24.5	Aug-19 6:00	-	-
O ₃	ppb	19	99.9%	31	Aug-22	-	-	56	Aug-03 11:00	82	0
PM _{2.5}	ug/m3	5	100.0%	12	Aug-31	30	0	25	Sep-01 0:00	-	-



Uptime (%)



Monthly Update

*All data has been slope, intercept, and baseline corrected. Data may change after validation process.

*The measured ambient concentrations of all parameters are within the AAAQO.

*All compliance parameters at Crescent Heights and Brooks are >90% operational. There are no operational issues to report.