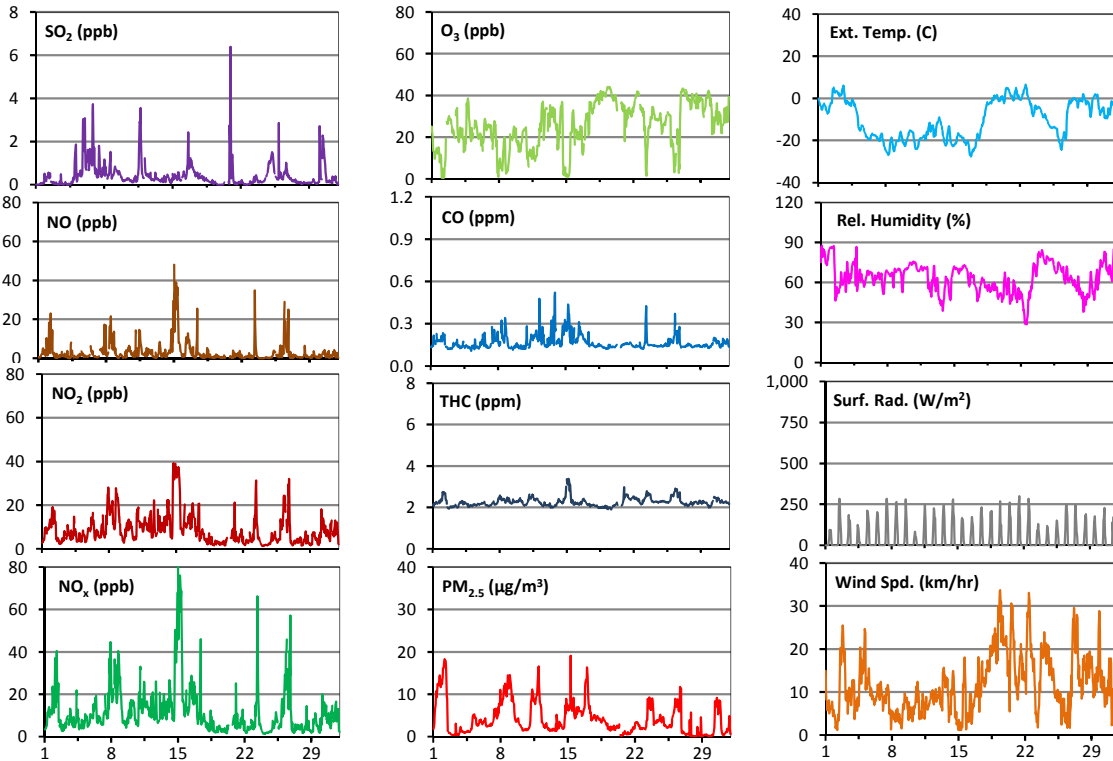
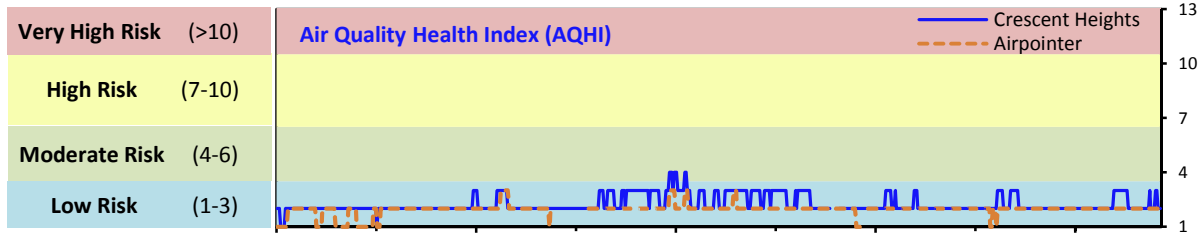


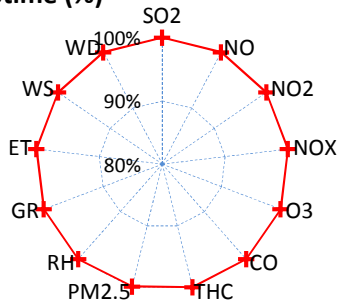
Palliser Airshed Society - December 2016 Summary Report

Continuous Sampling Results - Crescent Heights Station

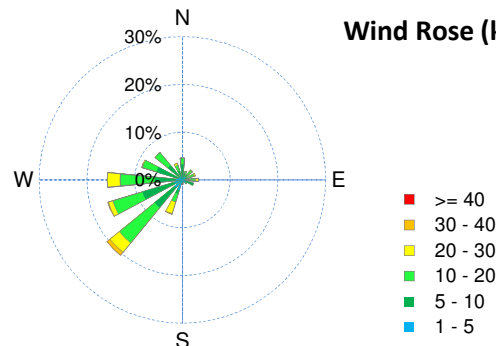
Pollutants	Month Records	24-Hour Records						1-Hour Records					
		Name	Conc Unit	Avg. Conc.	Uptime	Maximum		AAAQO Objective	Exceed No.	Maximum		AAAQO Objective	Exceed No.
						Conc	Time			Conc	Time		
SO ₂	ppb	< 1	100.0%	2	Dec-6	48	0	6	Dec-20 23:00	172	0		
NO	ppb	3.1	100.0%	17.1	Dec-15	-	-	48.1	Dec-15 1:00	-	-		
NO ₂	ppb	8.6	100.0%	20.9	Dec-15	-	-	39.3	Dec-14 18:00	159	0		
NO _x	ppb	11.6	100.0%	37.8	Dec-15	-	-	84.9	Dec-15 1:00	-	-		
O ₃	ppb	26	100.0%	42	Dec-19	-	-	44	Dec-19 12:00	82	0		
CO	ppm	0.2	100.0%	0.2	Dec-15	-	-	0.5	Dec-13 22:00	13	0		
THC	ppm	2.3	100.0%	2.6	Dec-15	-	-	3.4	Dec-15 5:00	-	-		
PM _{2.5}	µg/m ³	4	99.9%	11	Dec-8	30	0	19	Dec-15 8:00	80	0		



Instrument Uptime (%)

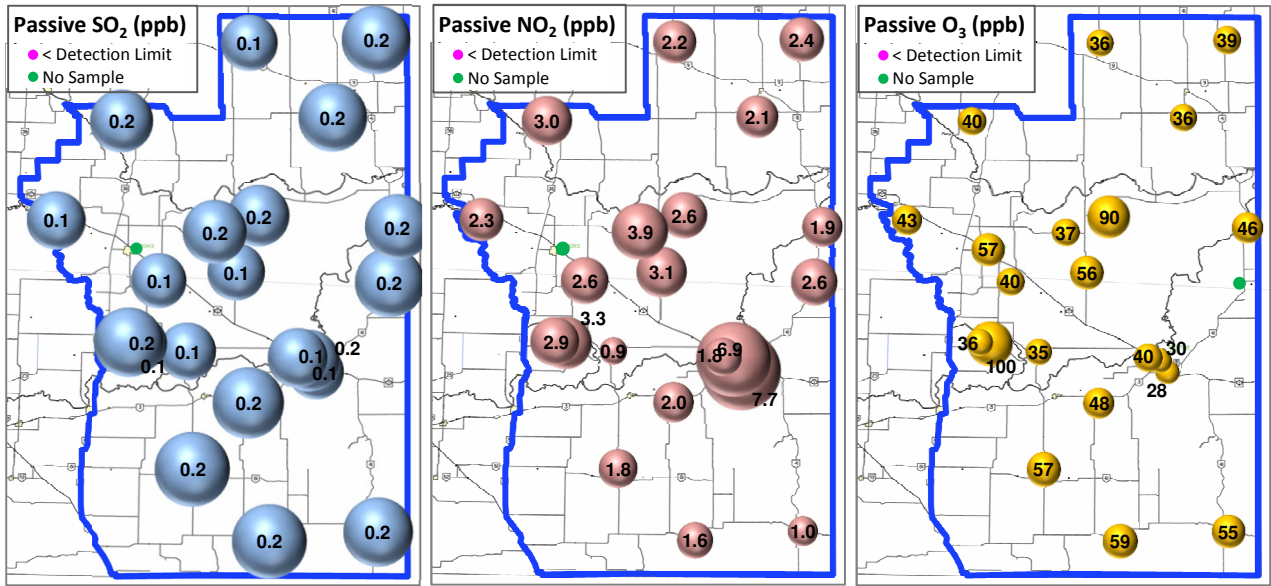


Wind Rose (km/hr)



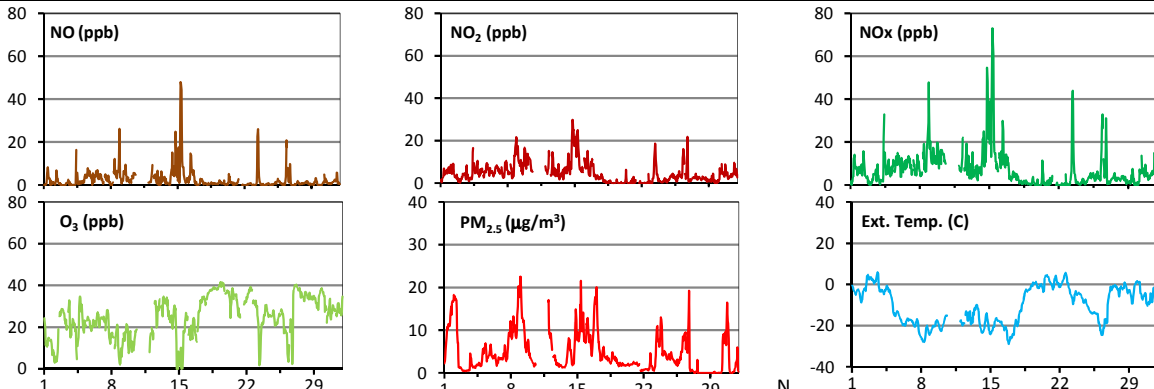
Palliser Airshed Society - December 2016 Summary Report

Passive Sampling Results

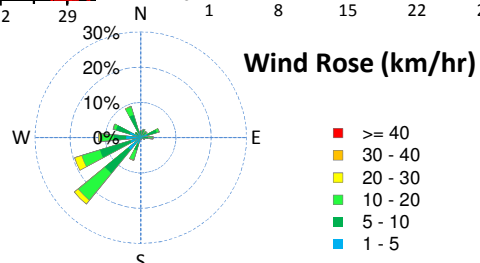
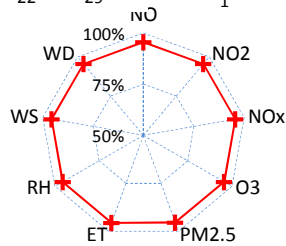


Continuous Sampling Results - Medicine Hat Airport Station

Pollutants		Month Records		24-Hour Records				1-Hour Records			
Name	Conc Unit	Avg. Conc.	Uptime	Maximum		AAAQO Objective	Exceed No.	Maximum		AAAQO Objective	Exceed No.
				Conc	Time			Conc	Time		
NO	ppb	2.6	95.6%	13.3	Dec-15	-	-	48.0	Dec-15 8:00	-	-
NO ₂	ppb	4.7	95.6%	12.9	Dec-15	-	-	29.8	Dec-14 19:00	159	0
NO _x	ppb	7.2	95.6%	26.2	Dec-15	-	-	73.1	Dec-15 8:00	-	-
O ₃	ppb	25	95.6%	39	Dec-19	-	-	42	Dec-19 8:00	82	0
PM _{2.5}	ug/m3	5	95.4%	12	Dec-8	30	0	23	Dec-09 1:00	80	0



Uptime (%)



Monthly Update

*All data has been slope, intercept, and baseline corrected. Data may change after validation process.

*The measured ambient concentrations of all parameters are within the AAAQO.

*All compliance parameters are >90% operational. The MH Airport station experienced power issues, causing a power disruption to the airpointer on December 10-11.