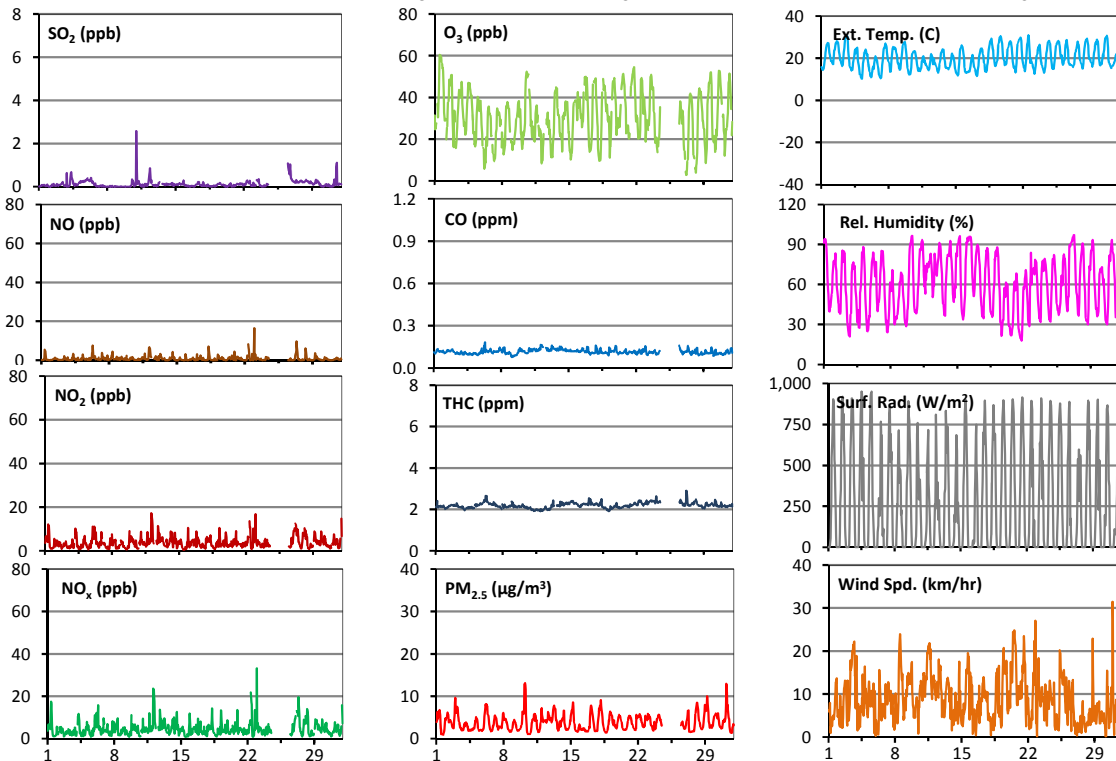
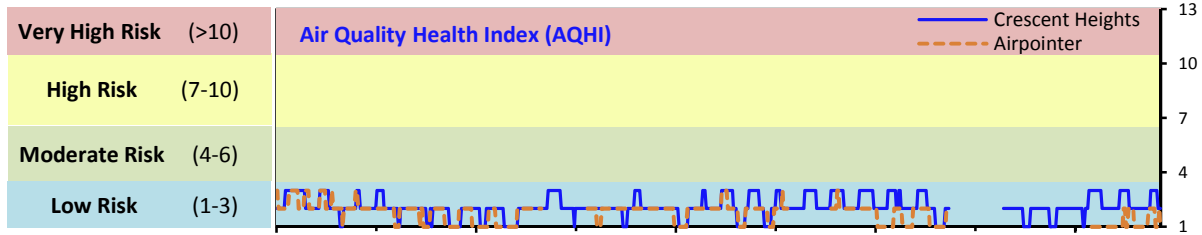


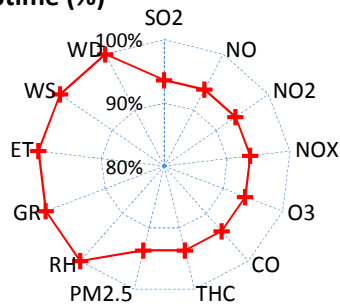
Palliser Airshed Society - July 2016 Summary Report

Continuous Sampling Results - Crescent Heights Station

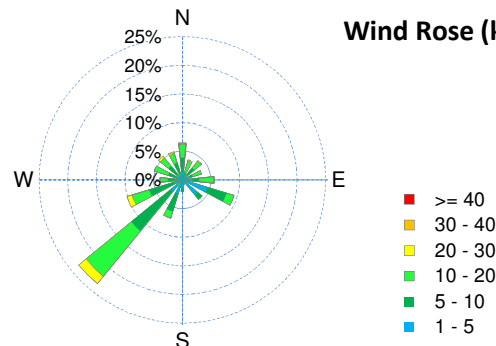
Pollutants	Month Records	24-Hour Records						1-Hour Records					
		Name	Conc Unit	Avg. Conc.	Uptime	Maximum		AAAQO Objective	Exceed No.	Maximum		AAAQO Objective	Exceed No.
						Conc	Time			Conc	Time		
SO ₂	ppb	< 1	93.6%	< 1	Jul-5	48	0	3	Jul-11 0:00	172	0		
NO	ppb	0.8	93.7%	2.2	Jul-12	-	-	16.5	Jul-23 0:00	-	-		
NO ₂	ppb	3.7	93.7%	7.3	Jul-12	-	-	17.3	Jul-12 3:00	159	0		
NO _x	ppb	4.6	93.7%	9.6	Jul-12	-	-	33.2	Jul-23 0:00	-	-		
O ₃	ppb	31	93.7%	44	Jul-1	-	-	60	Jul-01 13:00	82	0		
CO	ppm	0.1	93.7%	0.1	Jul-12	-	-	0.2	Jul-06 8:00	13	0		
THC	ppm	2.2	93.7%	2.4	Jul-23	-	-	2.9	Jul-27 5:00	-	-		
PM _{2.5}	µg/m ³	4	93.7%	5	Jul-29	30	0	13	Jul-10 6:00	-	-		



Instrument Uptime (%)

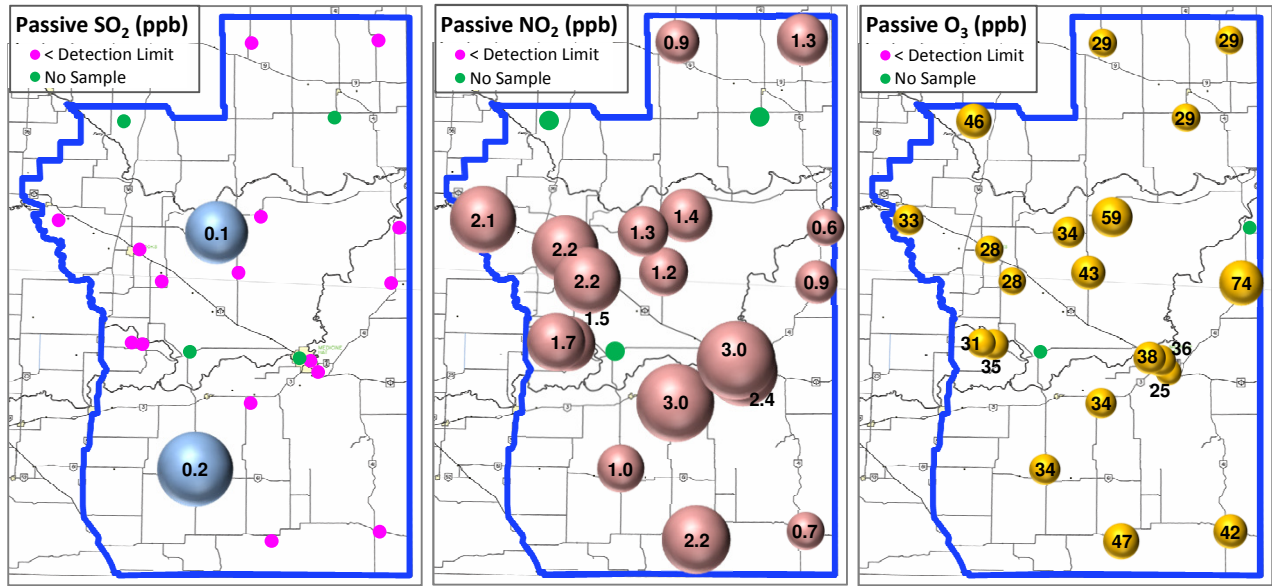


Wind Rose (km/hr)



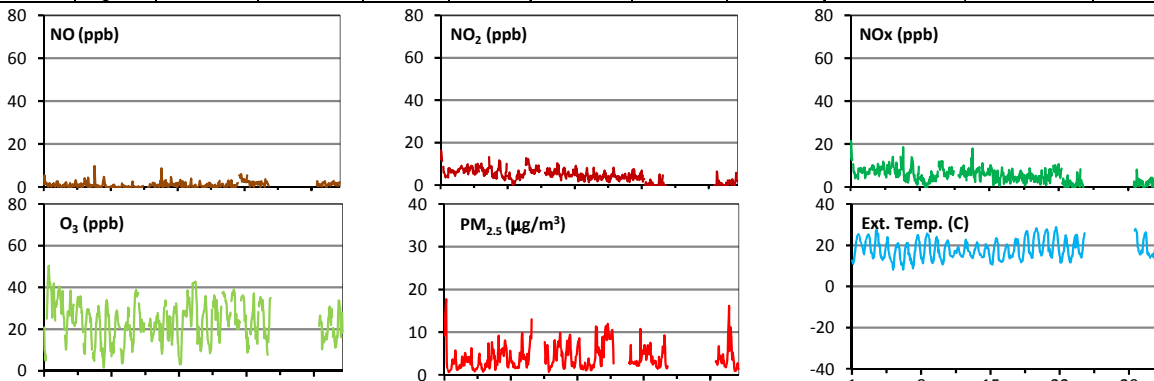
Palliser Airshed Society - July 2016 Summary Report

Passive Sampling Results

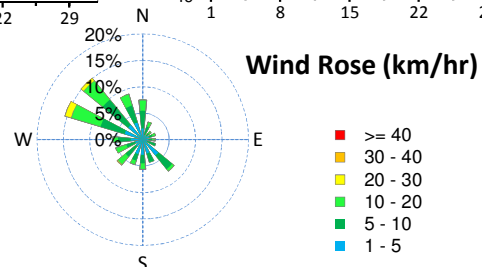
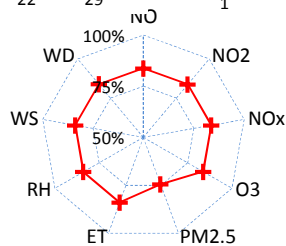


Continuous Sampling Results - Brooks Station

Pollutants		Month Records		24-Hour Records				1-Hour Records			
Name	Conc Unit	Avg. Conc.	Uptime	Maximum		AAQO	Exceed	Maximum		AAQO	Exceed
				Conc	Time	Objective	No.	Conc	Time	Objective	No.
NO	ppb	1.0	83.7%	2.9	Jul-21	-	-	9.9	Jul-06 8:00	-	-
NO ₂	ppb	4.6	83.7%	7.8	Jul-10	-	-	16.2	Jul-01 2:00	159	0
NO _x	ppb	5.4	83.7%	8.4	Jul-1	-	-	21.5	Jul-01 2:00	-	-
O ₃	ppb	24	83.7%	34	Jul-2	-	-	50	Jul-01 12:00	82	0
PM _{2.5}	ug/m3	4	74.5%	9	Jul-18	30	0	18	Jul-01 5:00	-	-



Uptime (%)



Monthly Update

*All data has been slope, intercept, and baseline corrected. Data may change after validation process.

*The measured ambient concentrations of all parameters are within the AAAQO.

*All compliance parameters at Crescent Heights are >90% operational. The station HVAC unit was malfunctioning and all analyzers were shutdown to prevent damage. The Brooks station was <90% operational this month, due to an electrical issue following a storm.