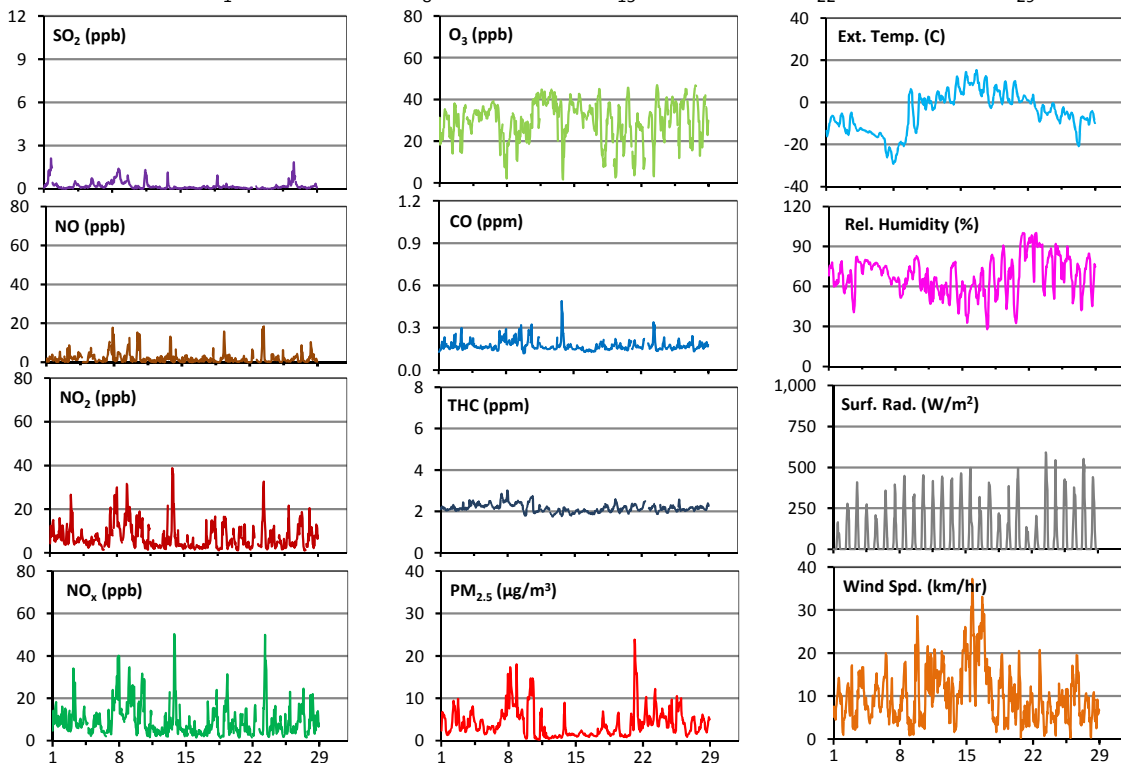
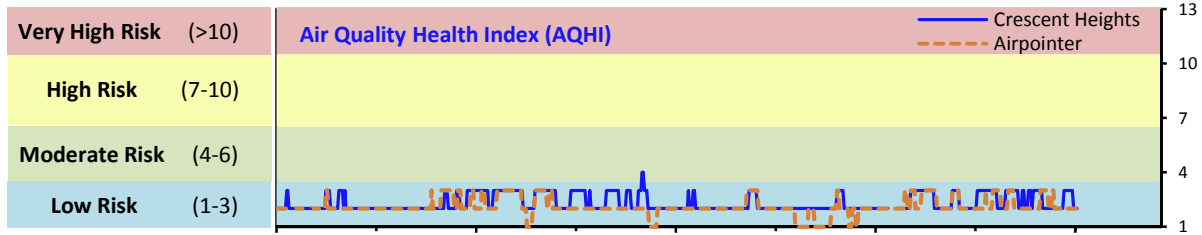


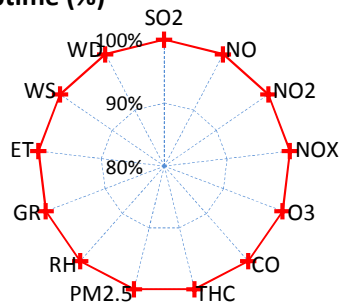
Palliser Airshed Society - February 2017 Summary Report

Continuous Sampling Results - Crescent Heights Station

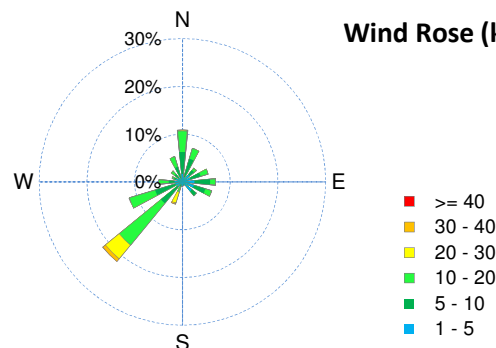
Pollutants	Month Records	24-Hour Records						1-Hour Records					
		Name	Conc Unit	Avg. Conc.	Uptime	Maximum		AAAQO Objective	Exceed No.	Maximum		AAAQO Objective	Exceed No.
						Conc	Time			Conc	Time		
SO ₂	ppb	< 1	100.0%	1	Feb-8	48	0	2	Feb-01 18:00	172	0		
NO	ppb	1.9	100.0%	5.7	Feb-7	-	-	18.5	Feb-23 11:00	-	-		
NO ₂	ppb	7.3	100.0%	13.7	Feb-7	-	-	38.8	Feb-13 19:00	159	0		
NO _x	ppb	9.3	100.0%	19.4	Feb-7	-	-	50.3	Feb-13 19:00	-	-		
O ₃	ppb	30	100.0%	40	Feb-12	-	-	47	Feb-27 16:00	82	0		
CO	ppm	0.2	100.0%	0.2	Feb-13	-	-	0.5	Feb-13 19:00	13	0		
THC	ppm	2.2	100.0%	2.5	Feb-7	-	-	3.0	Feb-08 0:00	-	-		
PM _{2.5}	µg/m ³	4	100.0%	10	Feb-8	30	0	24	Feb-21 4:00	80	0		



Instrument Uptime (%)

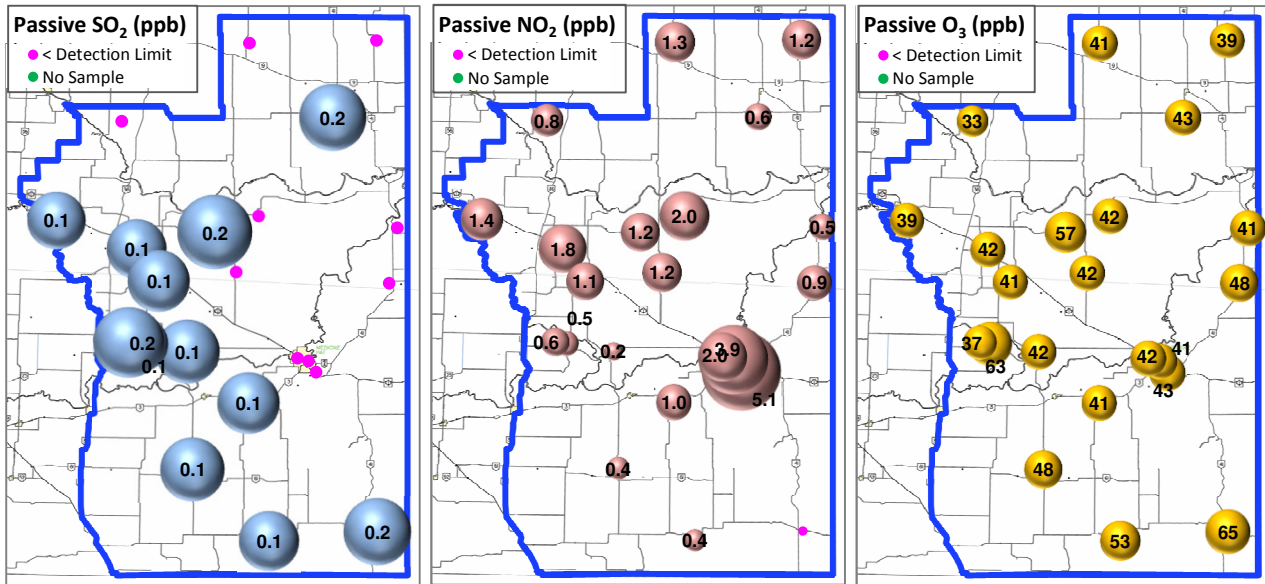


Wind Rose (km/hr)



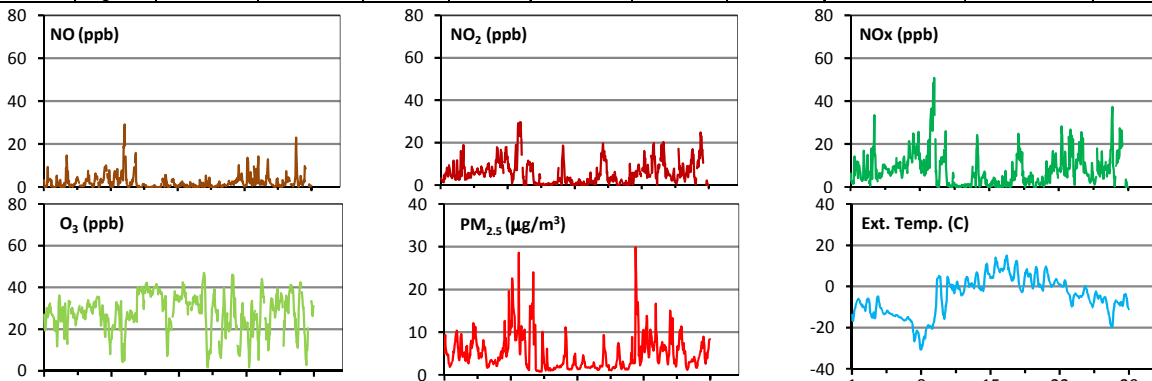
Palliser Airshed Society - February 2017 Summary Report

Passive Sampling Results

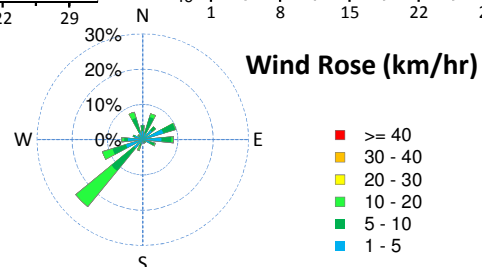
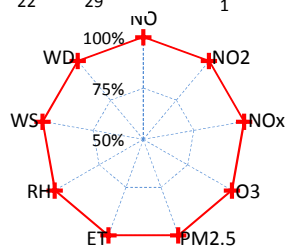


Continuous Sampling Results - Medicine Hat Airport Station

Pollutants		Month Records		24-Hour Records				1-Hour Records			
Name	Conc Unit	Avg. Conc.	Uptime	Maximum		AAQO	Exceed	Maximum		AAQO	Exceed
				Conc	Time	Objective	No.	Conc	Time	Objective	No.
NO	ppb	2.3	100.0%	6.7	Feb-9	-	-	29.2	Feb-09 11:00	-	-
NO ₂	ppb	5.8	100.0%	13.9	Feb-9	-	-	29.7	Feb-09 8:00	159	0
NO _x	ppb	8.1	100.0%	20.6	Feb-9	-	-	50.9	Feb-09 11:00	-	-
O ₃	ppb	28	100.0%	39	Feb-12	-	-	47	Feb-17 15:00	82	0
PM _{2.5}	ug/m3	5	100.0%	13	Feb-8	30	0	30	Feb-21 4:00	80	0



Uptime (%)



Monthly Update

*All data has been slope, intercept, and baseline corrected. Data may change after validation process.

*The measured ambient concentrations of all parameters are within the AAQO.

*All compliance parameters are >90% operational. There are no operational issues to report.