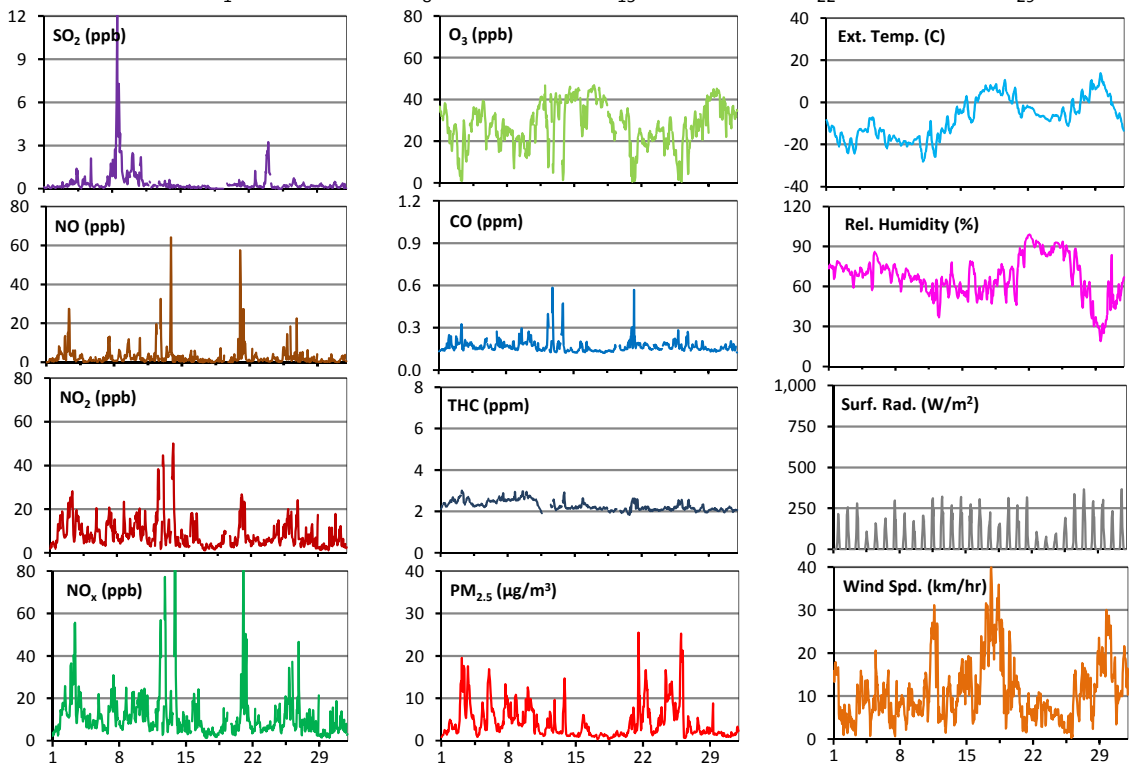
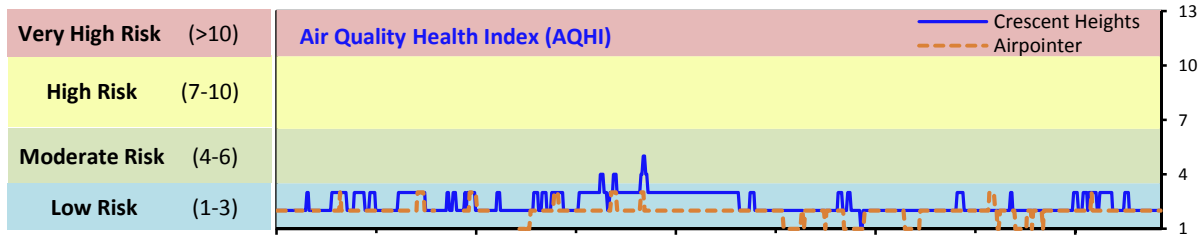


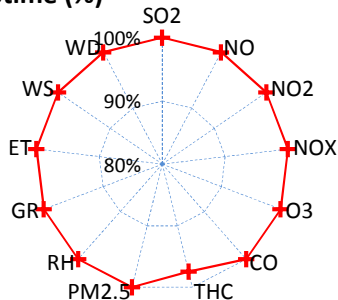
Palliser Airshed Society - January 2017 Summary Report

Continuous Sampling Results - Crescent Heights Station

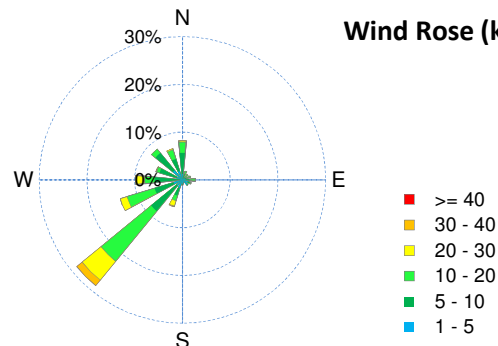
Pollutants	Month Records			24-Hour Records				1-Hour Records				
	Name	Conc Unit	Avg. Conc.	Uptime	Maximum		AAAQO	Exceed No.	Maximum		AAAQO	Exceed No.
					Conc	Time	Objective		Conc	Time	Objective	
SO ₂	ppb	< 1	100.0%	4	Jan-8	48	0	12	Jan-08 13:00	172	0	
NO	ppb	2.7	100.0%	9.8	Jan-21	-	-	64.2	Jan-13 21:00	-	-	
NO ₂	ppb	8.5	100.0%	19.7	Jan-12	-	-	50.1	Jan-13 21:00	159	0	
NO _x	ppb	11.2	100.0%	26.2	Jan-12	-	-	114.0	Jan-13 21:00	-	-	
O ₃	ppb	28	100.0%	43	Jan-29	-	-	47	Jan-17 2:00	82	0	
CO	ppm	0.2	100.0%	0.2	Jan-12	-	-	0.6	Jan-12 20:00	13	0	
THC	ppm	2.3	97.4%	2.7	Jan-9	-	-	3.0	Jan-03 6:00	-	-	
PM _{2.5}	µg/m ³	4	100.0%	12	Jan-3	30	0	25	Jan-21 14:00	80	0	



Instrument Uptime (%)

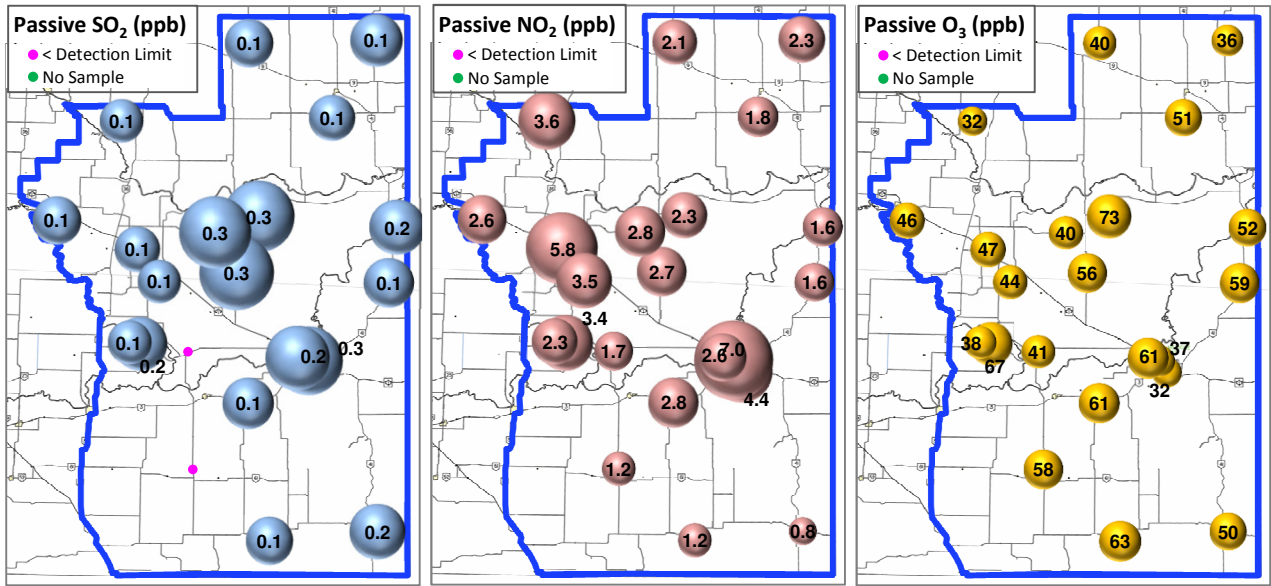


Wind Rose (km/hr)



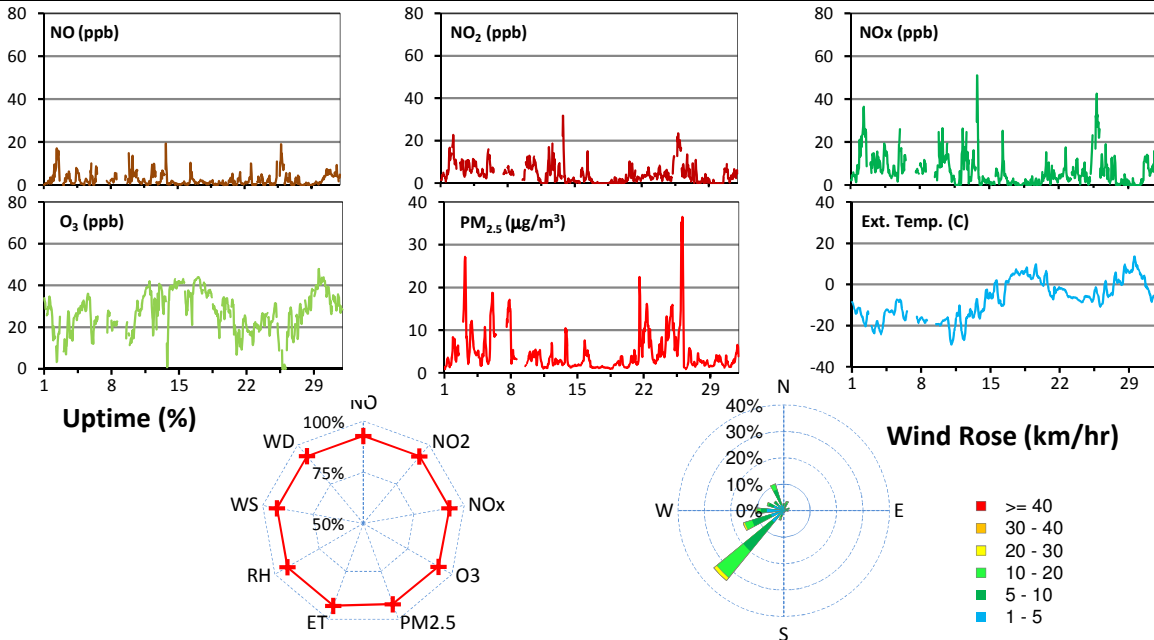
Palliser Airshed Society - January 2017 Summary Report

Passive Sampling Results



Continuous Sampling Results - Medicine Hat Airport Station

Pollutants	Name	Conc Unit	Month Records		24-Hour Records				1-Hour Records			
			Avg. Conc.	Uptime	Maximum		AAAQO Objective	Exceed No.	Maximum		AAAQO Objective	Exceed No.
					Conc	Time			Conc	Time		
NO	ppb	2.4	92.7%	4.5	Jan-31	-	-	19.4	Jan-13 19:00	-	-	
NO ₂	ppb	4.2	92.7%	8.8	Jan-10	-	-	31.8	Jan-13 19:00	159	0	
NO _x	ppb	6.5	92.7%	13.2	Jan-10	-	-	51.2	Jan-13 19:00	-	-	
O ₃	ppb	28	92.5%	41	Jan-29	-	-	48	Jan-29 13:00	82	0	
PM _{2.5}	ug/m3	5	92.1%	11	Jan-3	30	0	37	Jan-26 2:00	80	0	



Monthly Update

- *All data has been slope, intercept, and baseline corrected. Data may change after validation process.
- *The measured ambient concentrations of all parameters are within the AAAQO.
- *All compliance parameters are >90% operational. The MH Airport station experienced intermittent power issues.