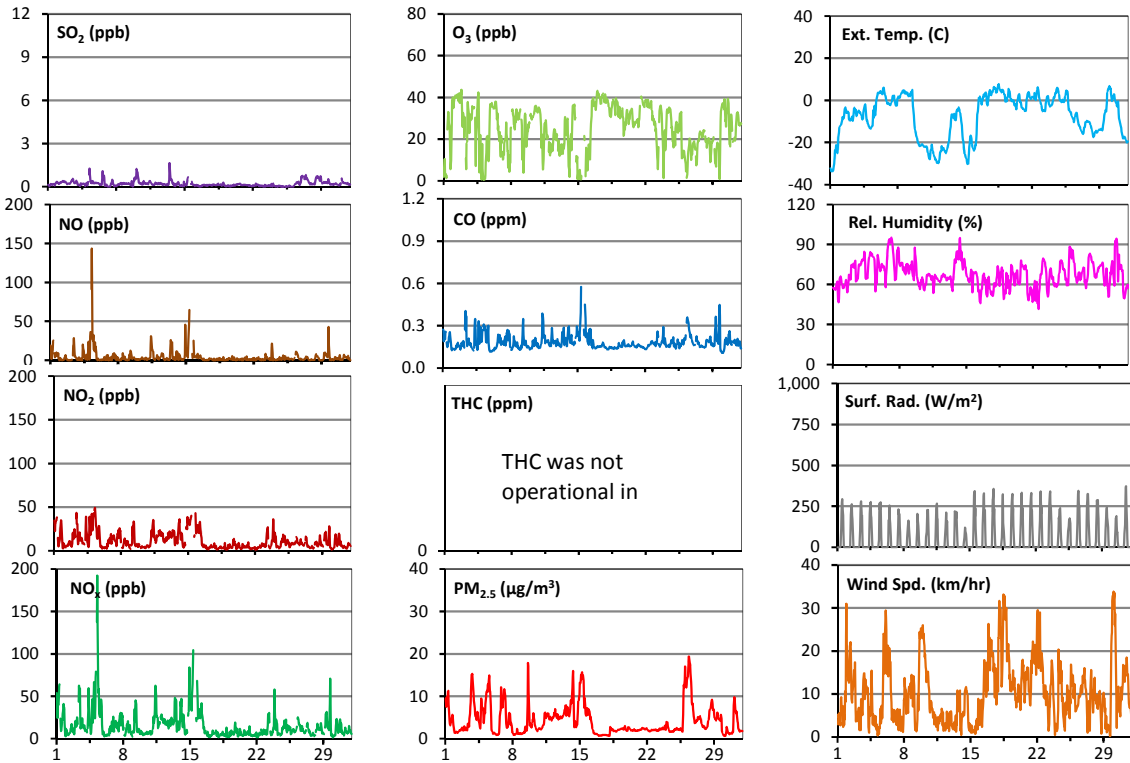
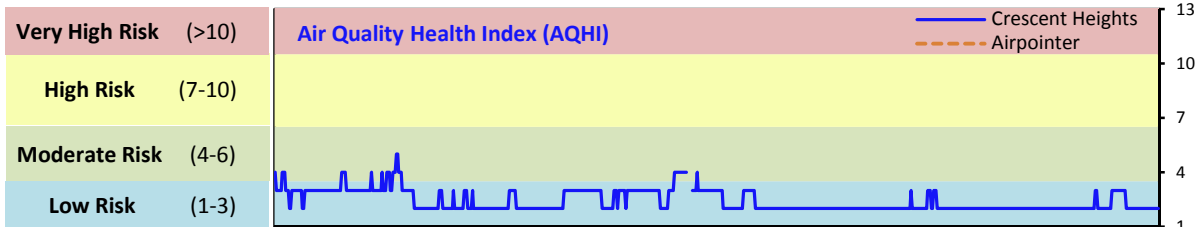


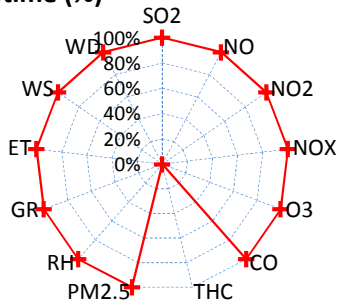
Palliser Airshed Society - January 2018 Summary Report

Continuous Sampling Results - Crescent Heights Station

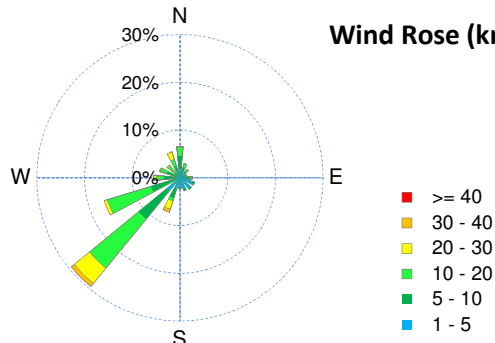
Pollutants	Month Records			24-Hour Records				1-Hour Records				
	Name	Conc Unit	Avg. Conc.	Uptime	Maximum		AAAQO	Exceed No.	Maximum		AAAQO	Exceed No.
					Conc	Time	Objective		Conc	Time	Objective	
SO ₂	ppb	< 1	100.0%	< 1	Jan-27	48	0	2	Jan-13 12:00	172	0	
NO	ppb	4.1	100.0%	25.6	Jan-5	-	-	143.4	Jan-05 7:00	-	-	
NO ₂	ppb	11.3	100.0%	24.2	Jan-5	-	-	49.3	Jan-05 7:00	159	0	
NO _x	ppb	15.5	100.0%	49.9	Jan-5	-	-	192.4	Jan-05 7:00	-	-	
O ₃	ppb	25	100.0%	40	Jan-17	-	-	44	Jan-02 21:00	82	0	
CO	ppm	0.2	100.0%	0.2	Jan-26	-	-	0.6	Jan-15 9:00	13	0	
THC	ppm	-	-	-	-	-	-	-	-	-	-	
PM _{2.5}	µg/m ³	4	100.0%	12	Jan-26	30	0	19	Jan-26 10:00	80	0	



Instrument Uptime (%)

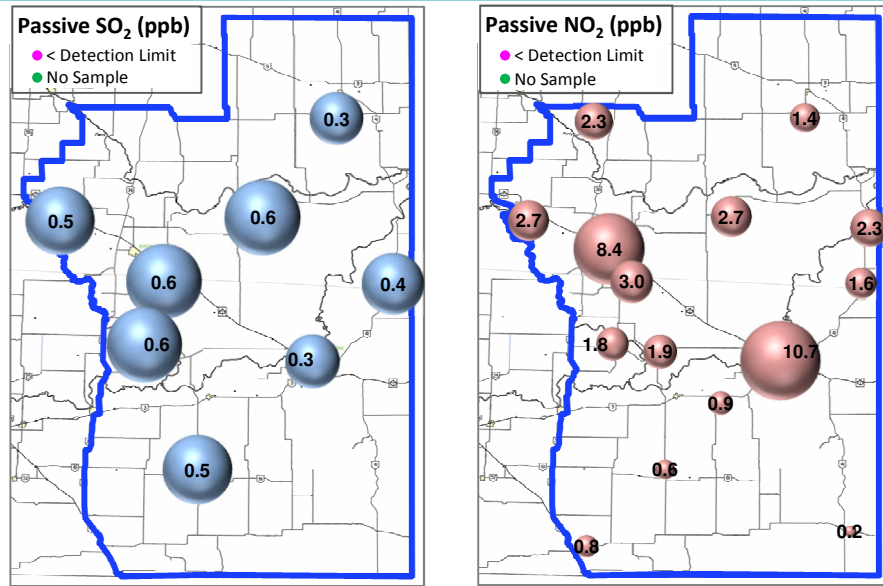


Wind Rose (km/hr)



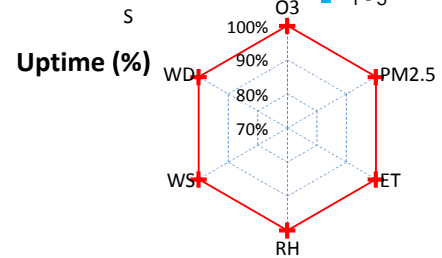
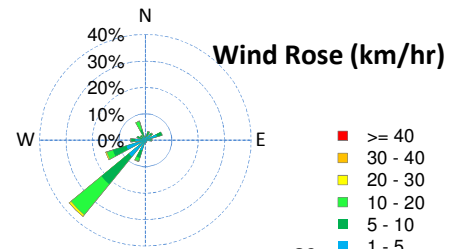
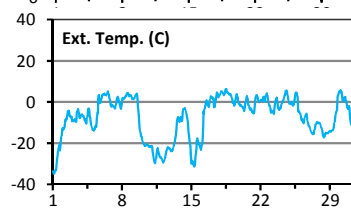
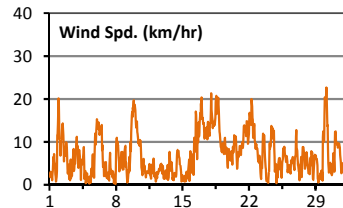
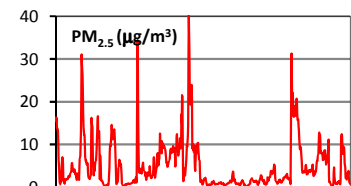
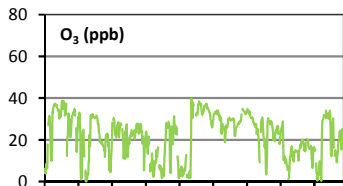
Palliser Airshed Society - January 2018 Summary Report

Passive Sampling Results



Continuous Sampling Results - Medicine Hat Airport Station

Pollutants		Month Records		24-Hour Records				1-Hour Records			
Name	Conc Unit	Avg. Conc.	Uptime	Maximum		AAAQO Objective	Exceed No.	Maximum		AAAQO Objective	Exceed No.
				Conc	Time			Conc	Time		
O ₃	ppb	22	100.0%	36	Jan-17	-	-	40	Jan-16 6:00	82	0
PM _{2.5}	ug/m3	5	100.0%	15	Jan-15	30	0	40	Jan-15 1:00	80	0



Monthly Update

- *All data has been validated; data may change after validation process.
- *The measured ambient concentrations of all parameters are within the AAAQO.
- *All compliance parameters are greater than 90% operational, with the exception of the THC analyzer which was not operational during the month of January due to instrument malfunctioning.