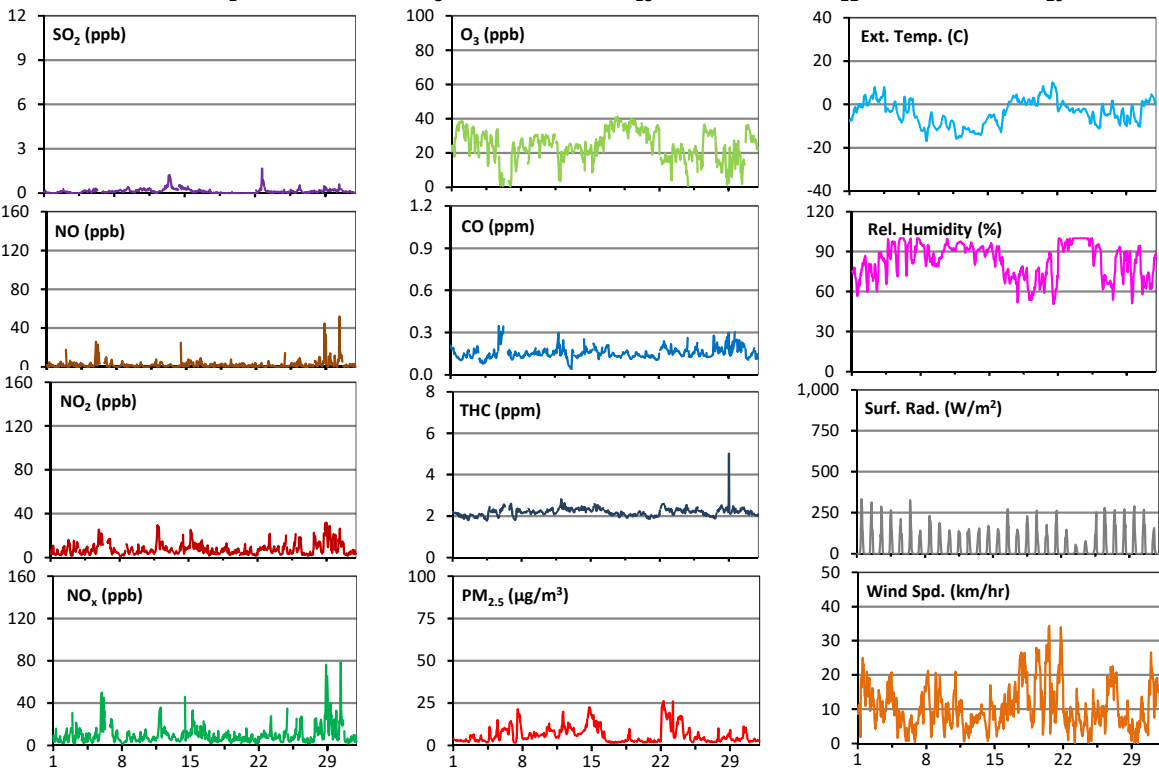
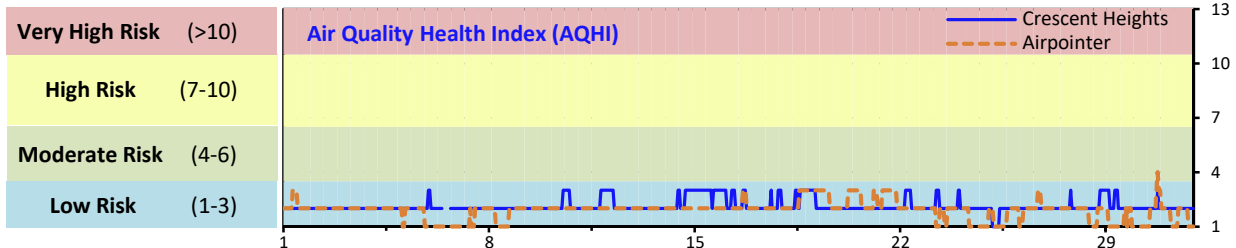


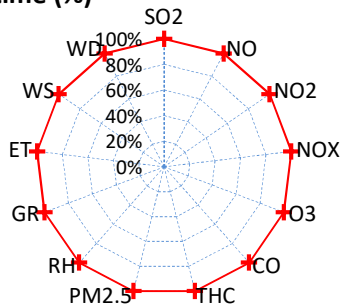
# Palliser Airshed Society - December 2019 Summary Report

## Continuous Sampling Results - Crescent Heights Station

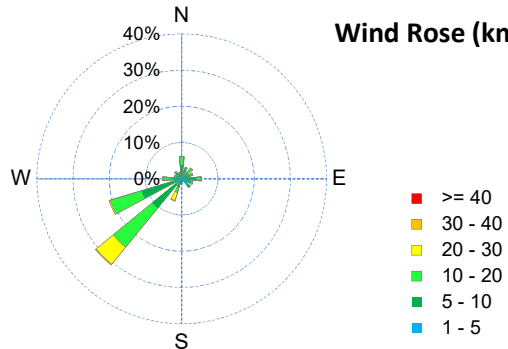
Pollutants	Month Records			24-Hour Records				1-Hour Records				
	Name	Conc Unit	Avg. Conc.	Uptime	Maximum		AAAQO Objective	Exceed No.	Maximum		AAAQO Objective	Exceed No.
					Conc	Time			Conc	Time		
SO <sub>2</sub>	ppb	< 1	100.0%	1	Dec-13	48	0	2	Dec-22 17:00	172	0	
NO	ppb	2.2	100.0%	7.6	Dec-28	-	-	51.9	Dec-30 9:00	-	-	
NO <sub>2</sub>	ppb	7.4	100.0%	14.9	Dec-29	-	-	31.9	Dec-29 0:00	159	0	
NO <sub>x</sub>	ppb	9.6	100.0%	20.8	Dec-28	-	-	78.6	Dec-30 9:00	-	-	
O <sub>3</sub>	ppb	24	100.0%	38	Dec-17	-	-	41	Dec-17 19:00	76	0	
CO	ppm	0.2	100.0%	0.2	Dec-29	-	-	0.4	Dec-06 17:00	13	0	
THC	ppm	2.2	100.0%	2.4	Dec-22	-	-	5.0	Dec-29 1:00	-	-	
PM <sub>2.5</sub>	µg/m <sup>3</sup>	6	100.0%	19	Dec-22	29	0	26	Dec-22 7:00	80	0	



Instrument Uptime (%)

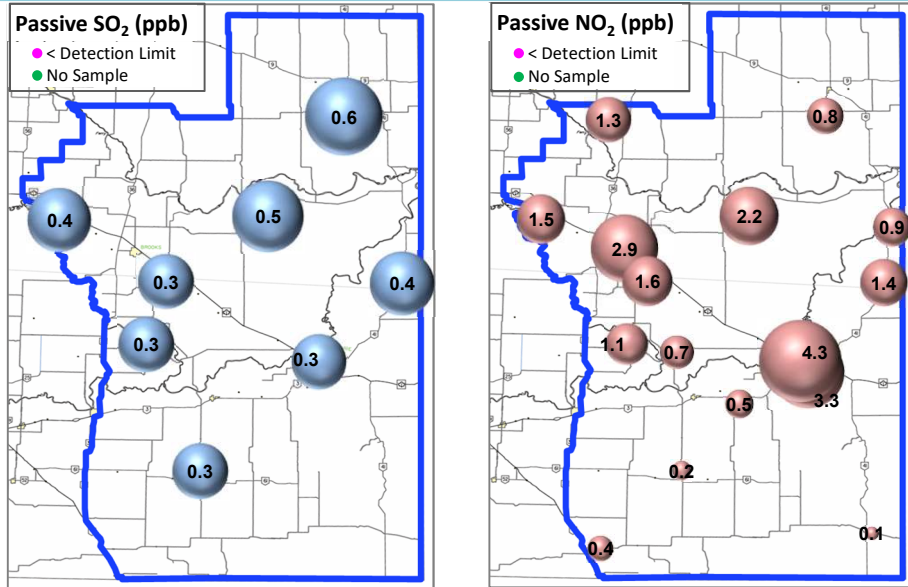


Wind Rose (km/hr)



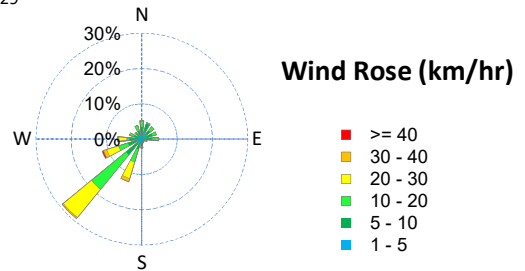
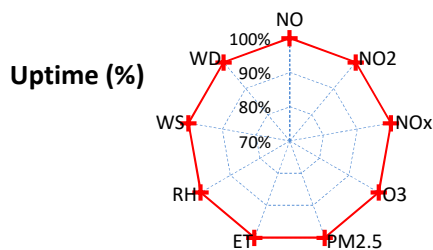
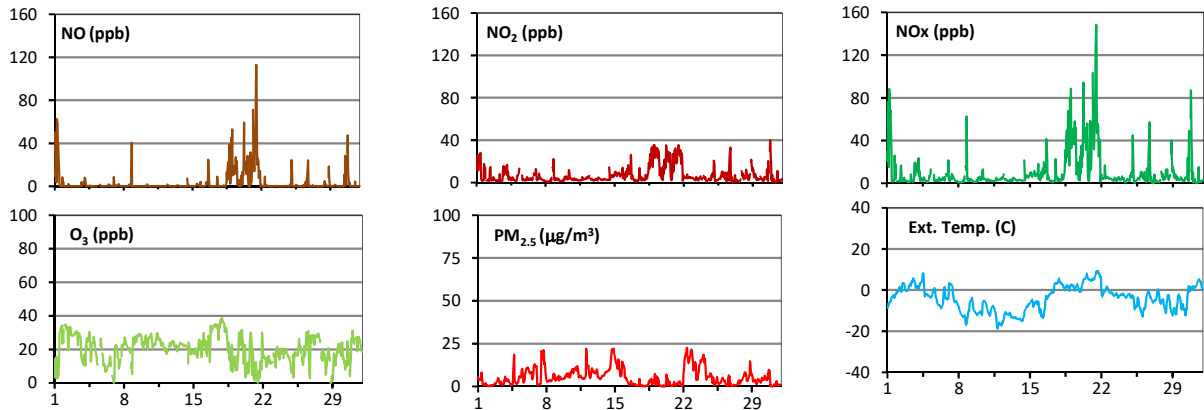
# Palliser Airshed Society - December 2019 Summary Report

## Passive Sampling Results



## Continuous Sampling Results - Medicine Hat Trap Club

Pollutants	Conc Unit	Month Records		24-Hour Records				1-Hour Records			
		Avg. Conc.	Uptime	Maximum		AAAQO Objective	Exceed No.	Maximum		AAAQO Objective	Exceed No.
				Conc	Time			Conc	Time		
NO	ppb	3.6	100.0%	31.3	Dec-21	-	-	113.0	Dec-21 12:00	-	-
NO <sub>2</sub>	ppb	6.9	100.0%	23.6	Dec-21	-	-	39.9	Dec-30 19:00	159	0
NO <sub>x</sub>	ppb	10.5	100.0%	54.9	Dec-21	-	-	148.3	Dec-21 12:00	-	-
O <sub>3</sub>	ppb	20	100.0%	34	Dec-17	-	-	39	Dec-17 21:00	76	0
PM <sub>2.5</sub>	ug/m3	5	100.0%	17	Dec-22	29	0	23	Dec-22 9:00	80	0



## Monthly Update

- \*All data has been validated; data may change after validation process.
- \*The measured ambient concentrations of all parameters are within the AAAQO.
- \*All compliance parameters had > 90% operational uptime.