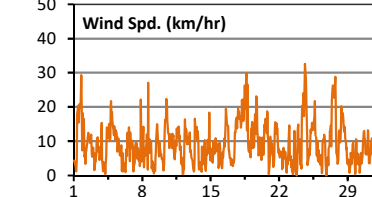
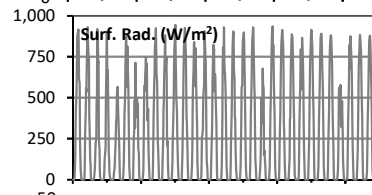
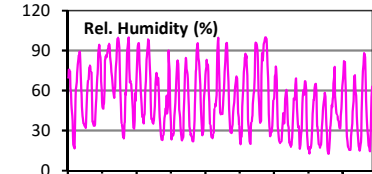
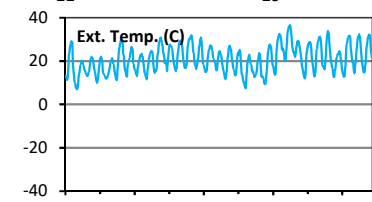
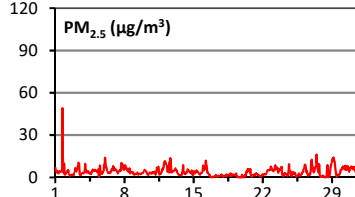
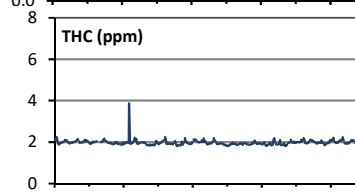
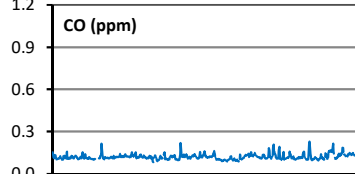
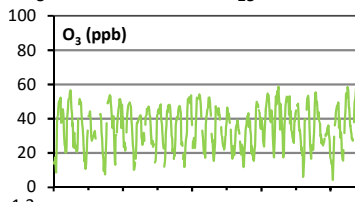
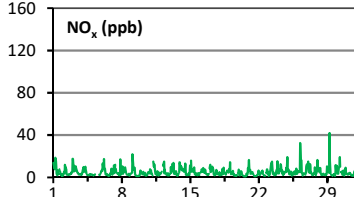
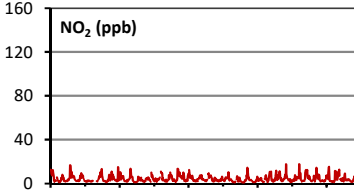
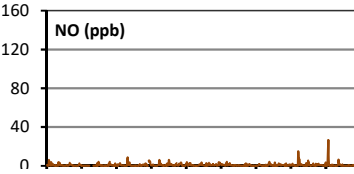
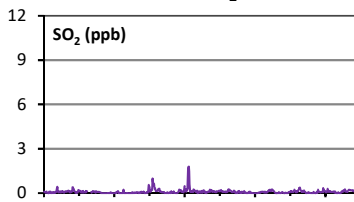
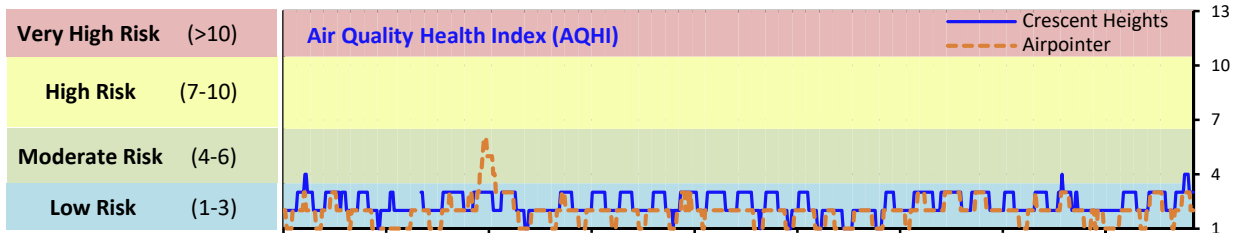


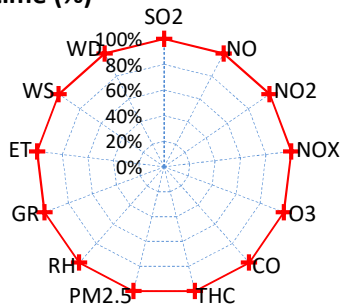
Palliser Airshed Society - July 2019 Summary Report

Continuous Sampling Results - Crescent Heights Station

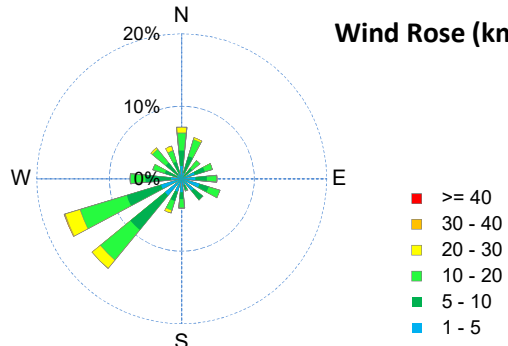
Pollutants	Month Records			24-Hour Records				1-Hour Records				
	Name	Conc Unit	Avg. Conc.	Uptime	Maximum		AAAQO Objective	Exceed No.	Maximum		AAAQO Objective	Exceed No.
					Conc	Time			Conc	Time		
SO ₂	ppb	< 1	100.0%	< 1	Jul-15	48	0	2	Jul-15 10:00	172	0	
NO	ppb	0.9	100.0%	2.0	Jul-29	-	-	26.8	Jul-29 6:00	-	-	
NO ₂	ppb	4.3	100.0%	6.2	Jul-26	-	-	17.7	Jul-26 6:00	159	0	
NO _x	ppb	5.0	100.0%	8.0	Jul-26	-	-	42.0	Jul-29 6:00	-	-	
O ₃	ppb	35	100.0%	45	Jul-31	-	-	63	Jul-31 16:00	76	0	
CO	ppm	0.1	100.0%	0.1	Jul-30	-	-	0.2	Jul-26 22:00	13	0	
THC	ppm	2.0	100.0%	2.1	Jul-8	-	-	3.9	Jul-08 14:00	-	-	
PM _{2.5}	µg/m ³	4	100.0%	7	Jul-12	29	0	49	Jul-01 18:00	80	0	



Instrument Uptime (%)

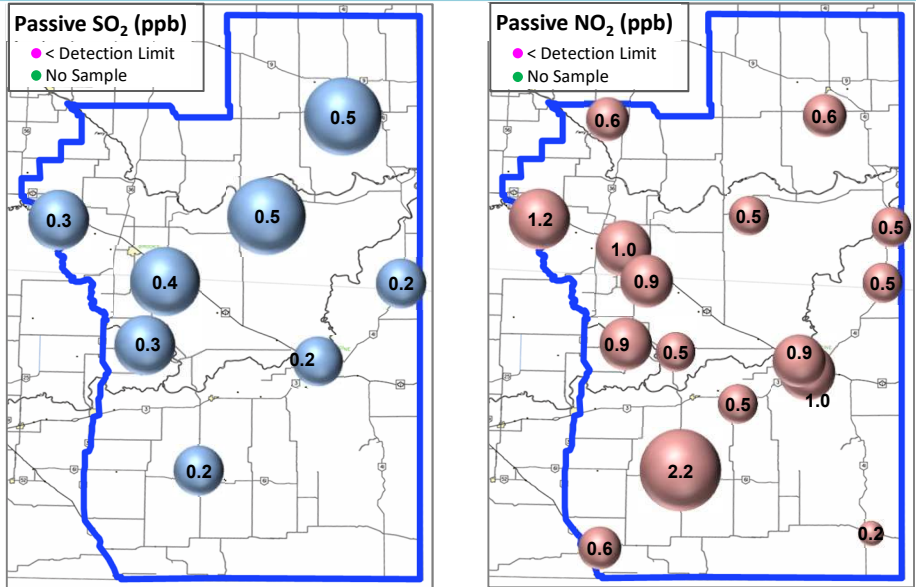


Wind Rose (km/hr)



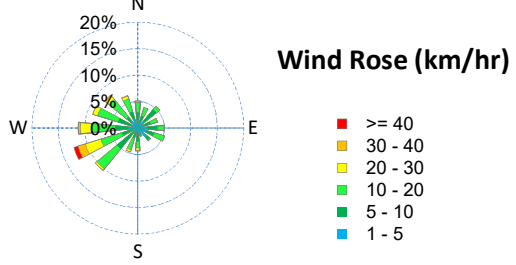
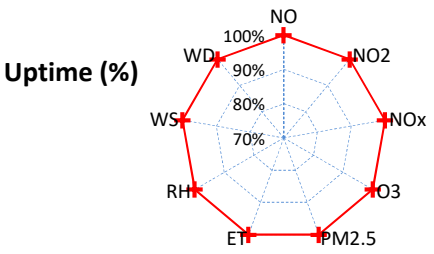
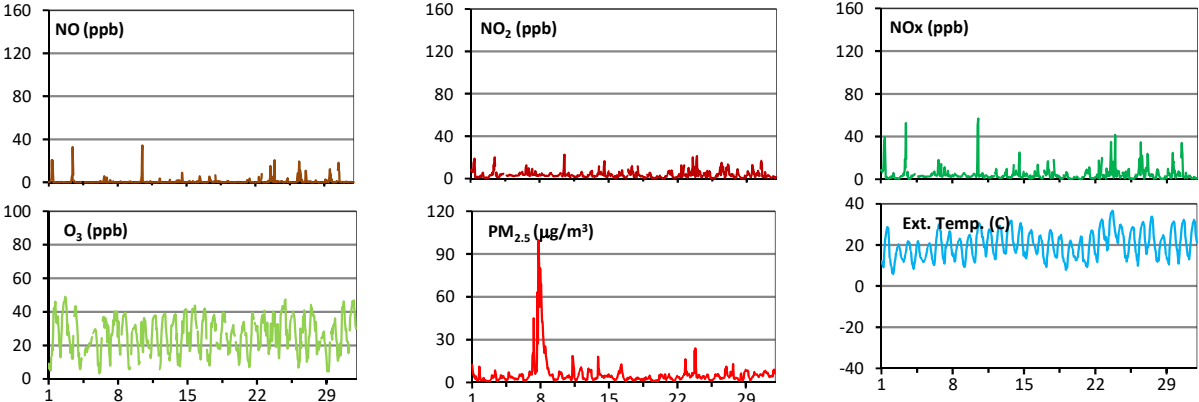
Palliser Airshed Society - July 2019 Summary Report

Passive Sampling Results



Continuous Sampling Results - Medicine Hat Trap Club

Pollutants	Conc Unit	Month Records		24-Hour Records				1-Hour Records			
		Avg. Conc.	Uptime	Maximum		AAAQO Objective	Exceed No.	Maximum		AAAQO Objective	Exceed No.
				Conc	Time			Conc	Time		
NO	ppb	1.0	100.0%	3.3	Jul-10	-	-	34.3	Jul-10 13:00	-	-
NO ₂	ppb	3.6	100.0%	7.3	Jul-23	-	-	22.6	Jul-10 13:00	159	0
NO _x	ppb	4.6	100.0%	10.4	Jul-23	-	-	56.9	Jul-10 13:00	-	-
O ₃	ppb	27	100.0%	34	Jul-31	-	-	49	Jul-02 17:00	76	0
PM _{2.5}	ug/m3	6	100.0%	32	Jul-7	29	1	100	Jul-07 20:00	80	4



Monthly Update

- *All data has been validated; data may change after validation process.
- *The measured ambient concentrations of all parameters are within the AAAQO with the exception of four 1-hour and one 24-hour PM 2.5 exceedance recorded at the Medicine Hat Trap Club station.
- *All compliance parameters are > 90% operational.