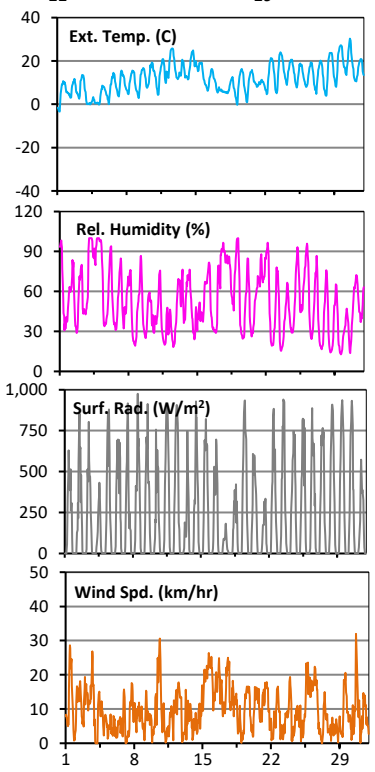
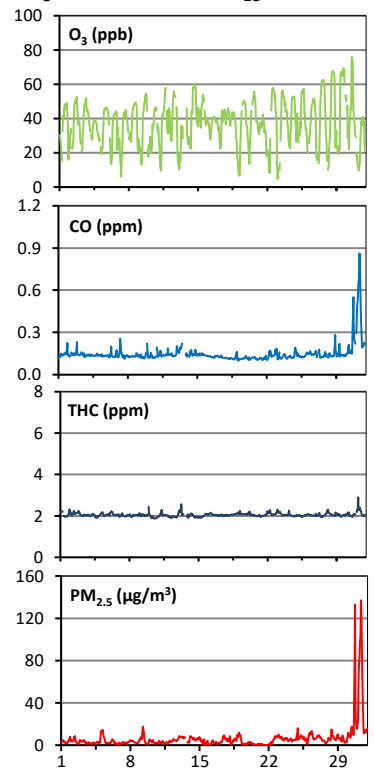
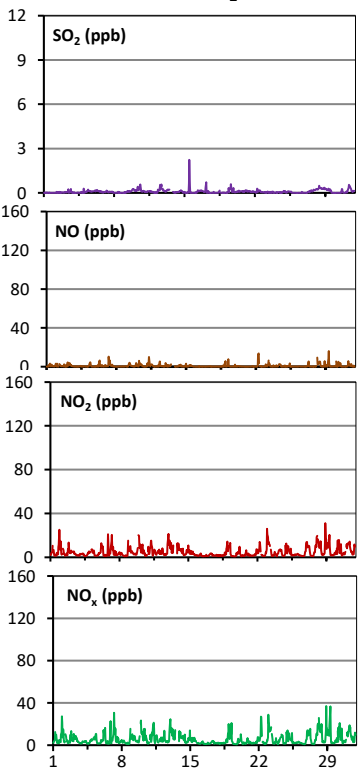
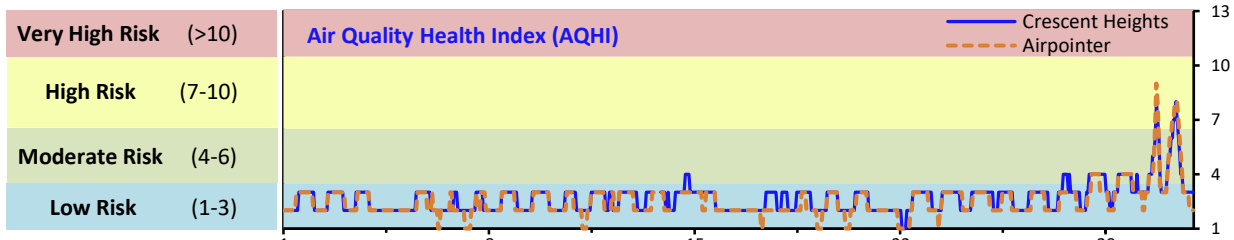


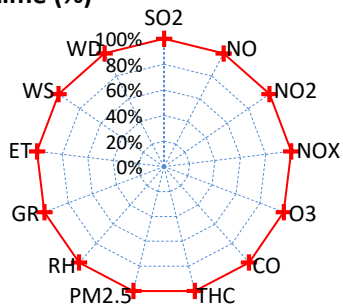
# Palliser Airshed Society - May 2019 Summary Report

## Continuous Sampling Results - Crescent Heights Station

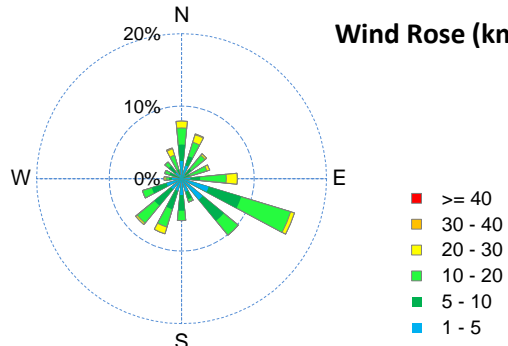
Pollutants	Month Records			24-Hour Records				1-Hour Records				
	Name	Conc Unit	Avg. Conc.	Uptime	Maximum		AAAQO Objective	Exceed No.	Maximum		AAAQO Objective	Exceed No.
					Conc	Time			Conc	Time		
SO <sub>2</sub>	ppb	< 1	100.0%	< 1	May-28	48	0	2	May-15 12:00	172	0	
NO	ppb	0.9	100.0%	2.1	May-28	-	-	16.1	May-29 8:00	-	-	
NO <sub>2</sub>	ppb	4.9	100.0%	10.5	May-28	-	-	31.2	May-28 22:00	159	0	
NO <sub>x</sub>	ppb	5.8	100.0%	12.6	May-28	-	-	37.0	May-28 22:00	-	-	
O <sub>3</sub>	ppb	37	100.0%	50	May-29	-	-	76	May-30 14:00	76	0	
CO	ppm	0.1	100.0%	0.4	May-31	-	-	0.9	May-31 9:00	13	0	
THC	ppm	2.1	100.0%	2.2	May-31	-	-	2.9	May-31 5:00	-	-	
PM <sub>2.5</sub>	µg/m <sup>3</sup>	6	100.0%	50	May-31	29	1	137	May-31 9:00	80	9	



Instrument Uptime (%)

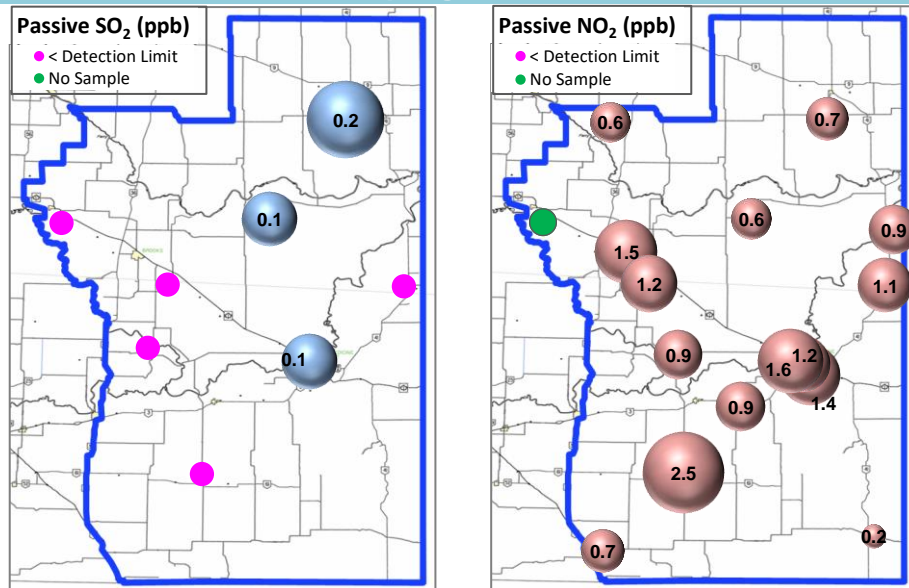


Wind Rose (km/hr)



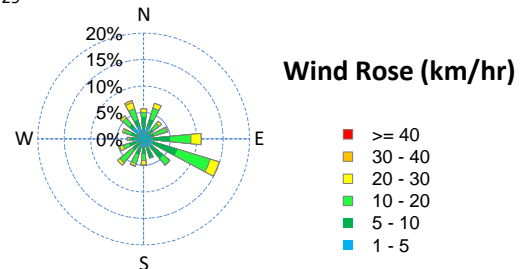
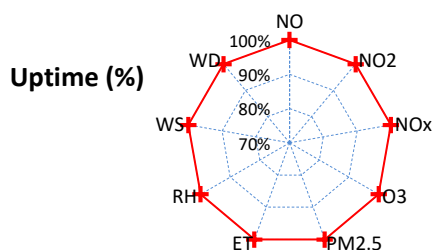
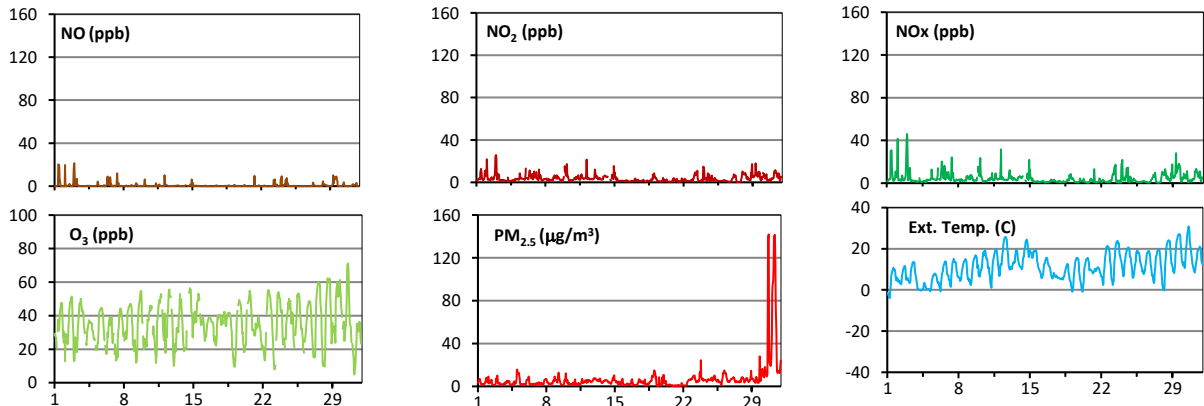
# Palliser Airshed Society - May 2019 Summary Report

## Passive Sampling Results



## Continuous Sampling Results - Medicine Hat Trap Club

Pollutants	Conc Unit	Month Records		24-Hour Records				1-Hour Records			
		Avg. Conc.	Uptime	Maximum		AAAQO Objective	Exceed No.	Maximum		AAAQO Objective	Exceed No.
				Conc	Time			Conc	Time		
NO	ppb	0.9	100.0%	3.4	May-29	-	-	21.4	May-03 1:00	-	-
NO <sub>2</sub>	ppb	3.7	100.0%	6.8	May-29	-	-	25.8	May-03 0:00	159	0
NO <sub>x</sub>	ppb	4.6	100.0%	10.2	May-29	-	-	46.0	May-03 0:00	-	-
O <sub>3</sub>	ppb	35	100.00%	46	May-29	-	-	71	May-30 14:00	76	0
PM <sub>2.5</sub>	ug/m3	7	100.00%	59	May-31	29	1	142	May-30 18:00	80	11



## Monthly Update

\*All data has been validated; data may change after validation process.

\*The measured ambient concentrations of all parameters are within the AAAQO with the exception of one 24-hour and nine 1-hour PM<sub>2.5</sub> exceedances recorded at Crescent Heights.

\*One 24-hour and eleven 1-hour PM<sub>2.5</sub> exceedances were recorded at the Medicine Hat Trap Club Airpointer.

\*All compliance parameters are > 90% operational.