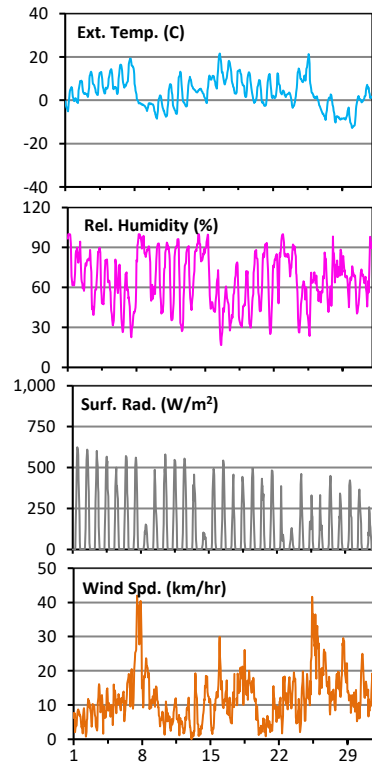
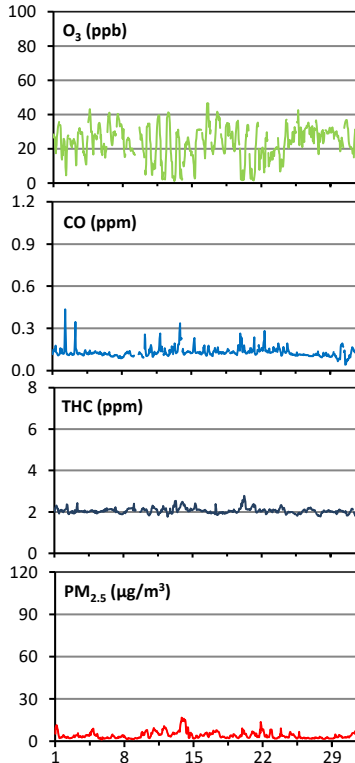
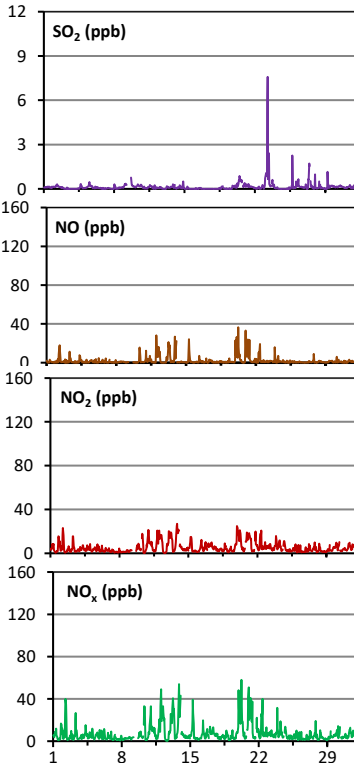
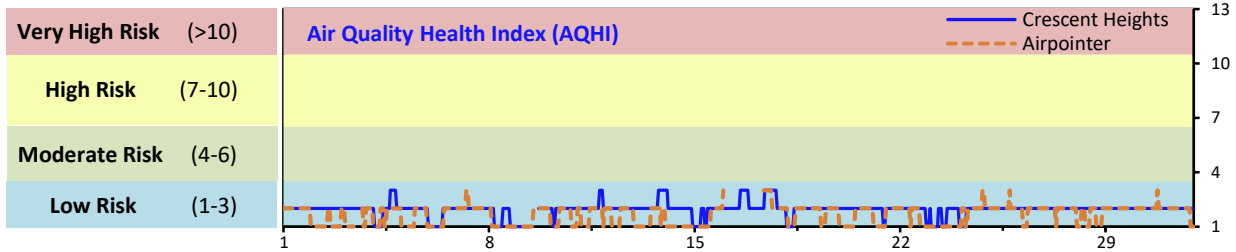


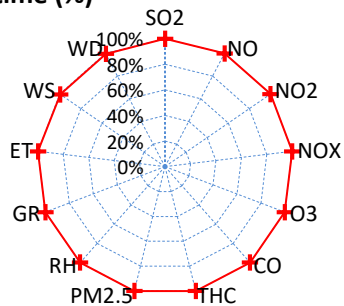
# Palliser Airshed Society - October 2019 Summary Report

## Continuous Sampling Results - Crescent Heights Station

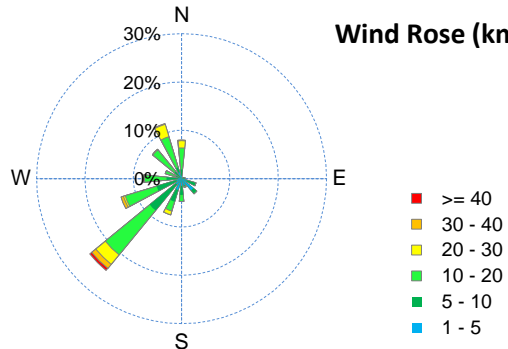
Pollutants		Month Records		24-Hour Records				1-Hour Records			
Name	Conc Unit	Avg. Conc.	Uptime	Maximum		AAAQO Objective	Exceed No.	Maximum		AAAQO Objective	Exceed No.
				Conc	Time			Conc	Time		
SO <sub>2</sub>	ppb	< 1	100.0%	1	Oct-23	48	0	8	Oct-23 7:00	172	0
NO	ppb	2.1	100.0%	8.7	Oct-20	-	-	36.5	Oct-20 6:00	-	-
NO <sub>2</sub>	ppb	5.3	100.0%	12.9	Oct-13	-	-	27.0	Oct-13 21:00	159	0
NO <sub>x</sub>	ppb	7.4	100.0%	20.7	Oct-13	-	-	58.0	Oct-20 6:00	-	-
O <sub>3</sub>	ppb	24	100.0%	33	Oct-7	-	-	47	Oct-16 14:00	76	0
CO	ppm	0.1	100.0%	0.2	Oct-13	-	-	0.4	Oct-02 7:00	13	0
THC	ppm	2.1	100.0%	2.3	Oct-20	-	-	2.8	Oct-20 6:00	-	-
PM <sub>2.5</sub>	µg/m <sup>3</sup>	4	100.0%	9	Oct-13	29	0	17	Oct-13 20:00	80	0



Instrument Uptime (%)

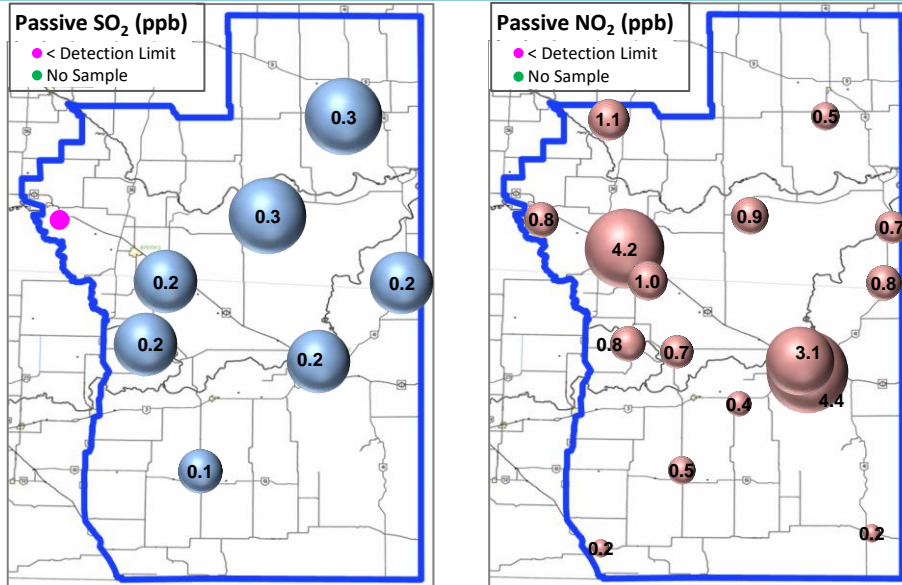


Wind Rose (km/hr)



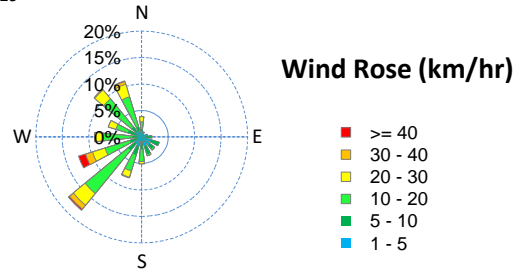
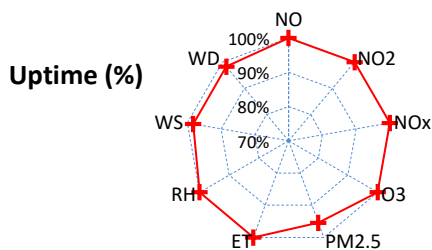
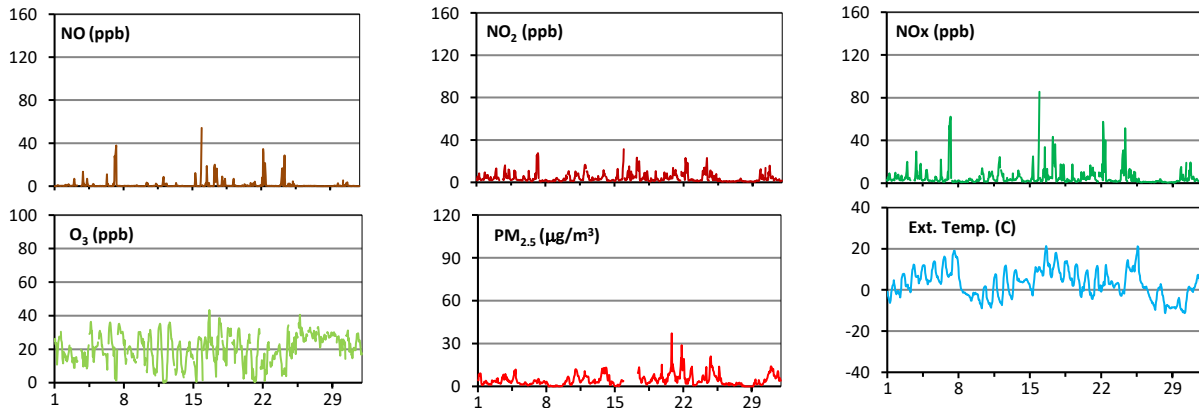
# Palliser Airshed Society - October 2019 Summary Report

## Passive Sampling Results



## Continuous Sampling Results - Medicine Hat Trap Club

Pollutants	Conc Unit	Month Records		24-Hour Records				1-Hour Records			
		Avg. Conc.	Uptime	Maximum		AAAQO Objective	Exceed No.	Maximum		AAAQO Objective	Exceed No.
				Conc	Time			Conc	Time		
NO	ppb	1.3	100.0%	7.2	Oct-7	-	-	54.2	Oct-15 23:00	-	-
NO <sub>2</sub>	ppb	4.2	100.0%	8.5	Oct-24	-	-	31.3	Oct-15 23:00	159	0
NO <sub>x</sub>	ppb	5.5	100.0%	14.4	Oct-7	-	-	85.5	Oct-15 23:00	-	-
O <sub>3</sub>	ppb	20	100.0%	28	Oct-26	-	-	43	Oct-16 15:00	76	0
PM <sub>2.5</sub>	ug/m3	4	95.4%	10	Oct-21	29	0	37	Oct-20 20:00	80	0



## Monthly Update

\*All data has been validated; data may change after validation process.

\*The measured ambient concentrations of all parameters are within the AAAQO.

\*All compliance parameters had > 90% operational uptime.