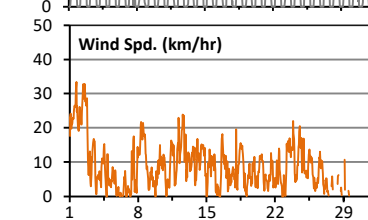
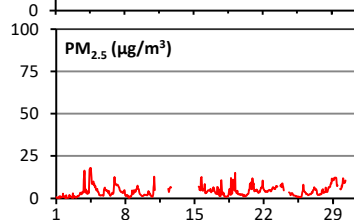
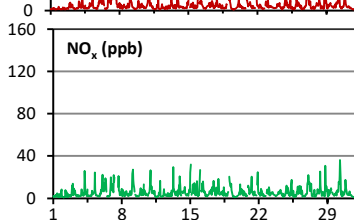
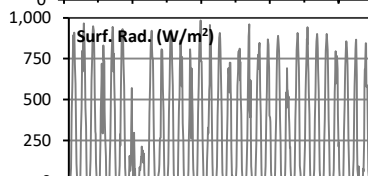
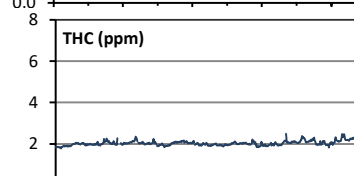
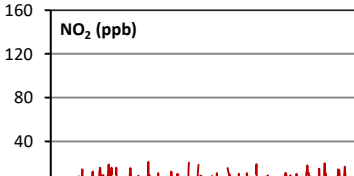
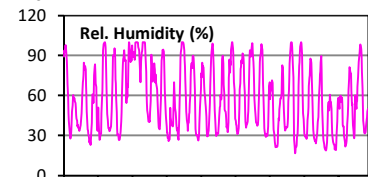
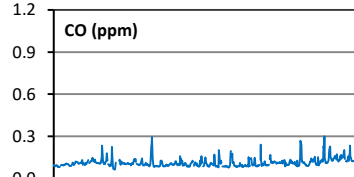
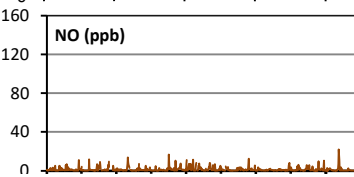
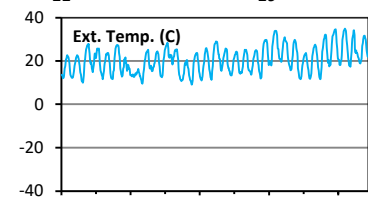
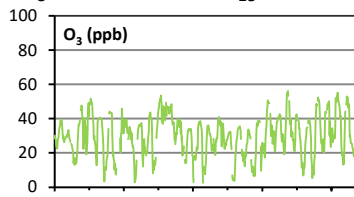
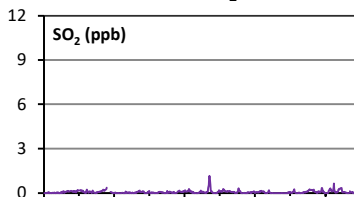
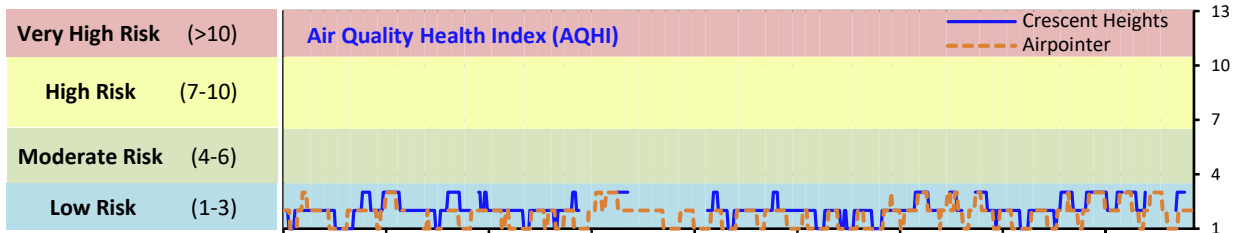


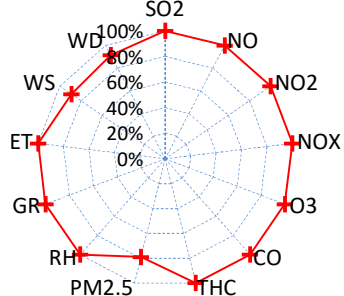
# Palliser Airshed Society - July 2020 Summary Report

## Continuous Sampling Results - Crescent Heights Station

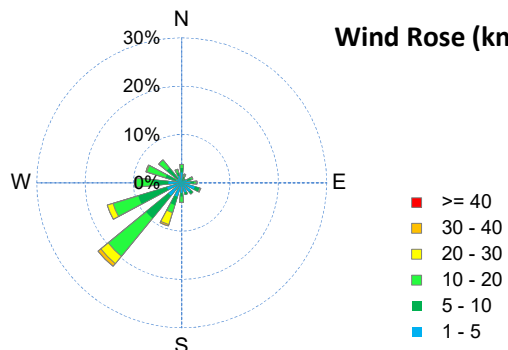
Pollutants	Month Records			24-Hour Records				1-Hour Records				
	Name	Conc Unit	Avg. Conc.	Uptime	Maximum		AAAQO Objective	Exceed No.	Maximum		AAAQO Objective	Exceed No.
					Conc	Time			Conc	Time		
SO <sub>2</sub>	ppb	< 1	100.0%	< 1	Jul-17	48	0	1.2	Jul-17 12:00	172	0	
NO	ppb	1.4	100.0%	3.4	Jul-15	-	-	22.2	Jul-30 8:00	-	-	
NO <sub>2</sub>	ppb	4.2	100.0%	7.3	Jul-30	-	-	21.4	Jul-10 23:00	159	0	
NO <sub>x</sub>	ppb	5.6	100.0%	9.6	Jul-30	-	-	36.1	Jul-30 8:00	-	-	
O <sub>3</sub>	ppb	30	100.0%	44	Jul-12	-	-	56	Jul-24 15:00	76	0	
CO	ppm	0.1	100.0%	0.2	Jul-28	-	-	0.3	Jul-28 8:00	13	0	
THC	ppm	2.0	99.9%	2.3	Jul-30	-	-	2.5	Jul-24 10:00	-	-	
PM <sub>2.5</sub>	µg/m <sup>3</sup>	4	79.0%	9	Jul-29	29	0	22	Jul-31 10:00	80	0	



Instrument Uptime (%)

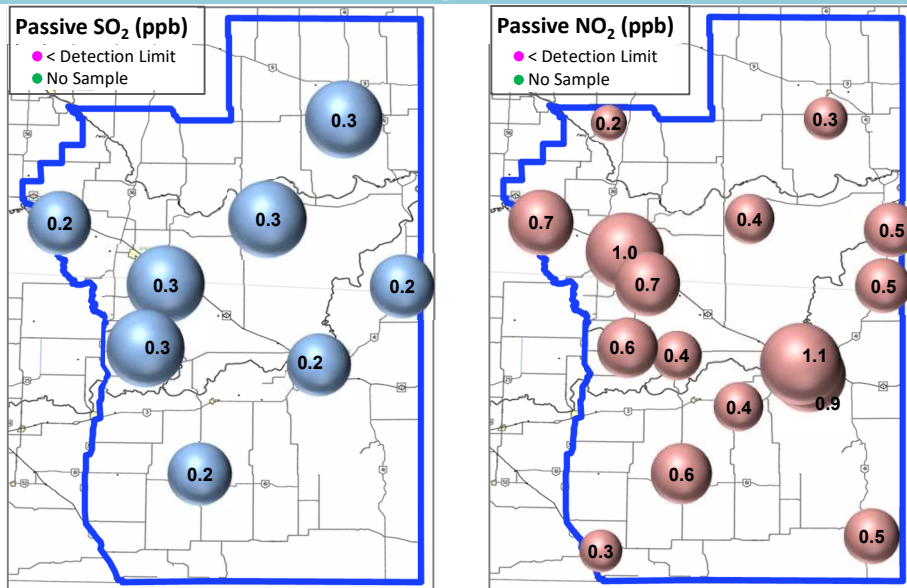


Wind Rose (km/hr)



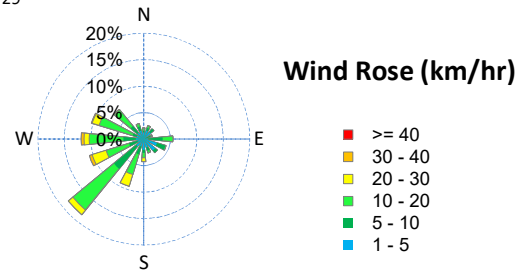
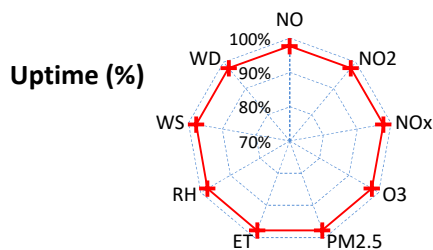
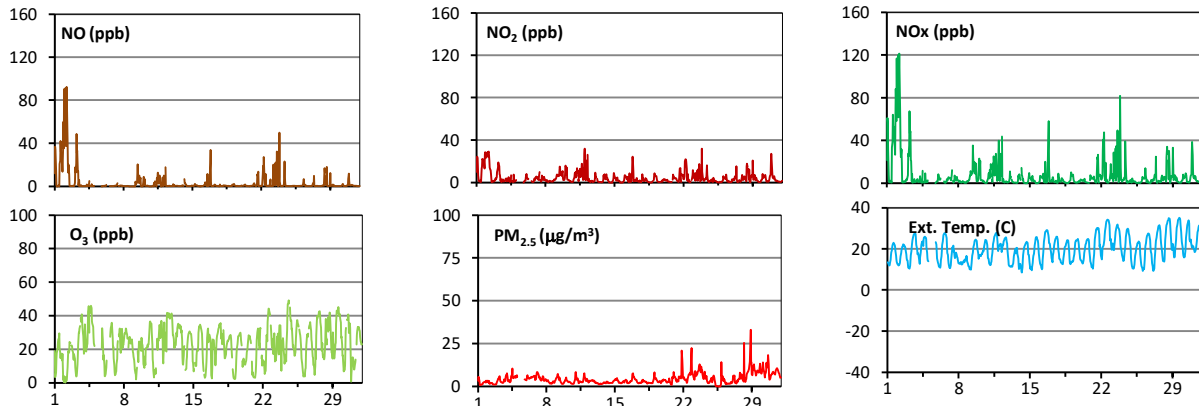
# Palliser Airshed Society - July 2020 Summary Report

## Passive Sampling Results



## Continuous Sampling Results - Medicine Hat Trap Club

Pollutants	Conc Unit	Month Records		24-Hour Records				1-Hour Records			
		Avg. Conc.	Uptime	Maximum		AAAQO Objective	Exceed No.	Maximum		AAAQO Objective	Exceed No.
				Conc	Time			Conc	Time		
NO	ppb	3.3	97.7%	25.6	Jul-2	-	-	92.4	Jul-02 6:00	-	-
NO <sub>2</sub>	ppb	4.3	97.7%	13.8	Jul-1	-	-	31.8	Jul-12 0:00	159	0
NO <sub>x</sub>	ppb	7.6	97.7%	37.2	Jul-2	-	-	121.5	Jul-02 6:00	-	-
O <sub>3</sub>	ppb	23	97.7%	35	Jul-12	-	-	49	Jul-24 15:00	76	0
PM <sub>2.5</sub>	ug/m <sup>3</sup>	4	97.7%	10	Jul-28	29	0	33	Jul-28 22:00	80	0



## Monthly Update

\*All data has been validated; data may change after validation process.

\*The measured ambient concentrations of all parameters are within the AAAQO.

\*All compliance parameters had > 90% operational uptime with the exception of PM2.5 and Wind Speed at Crescent Heights.